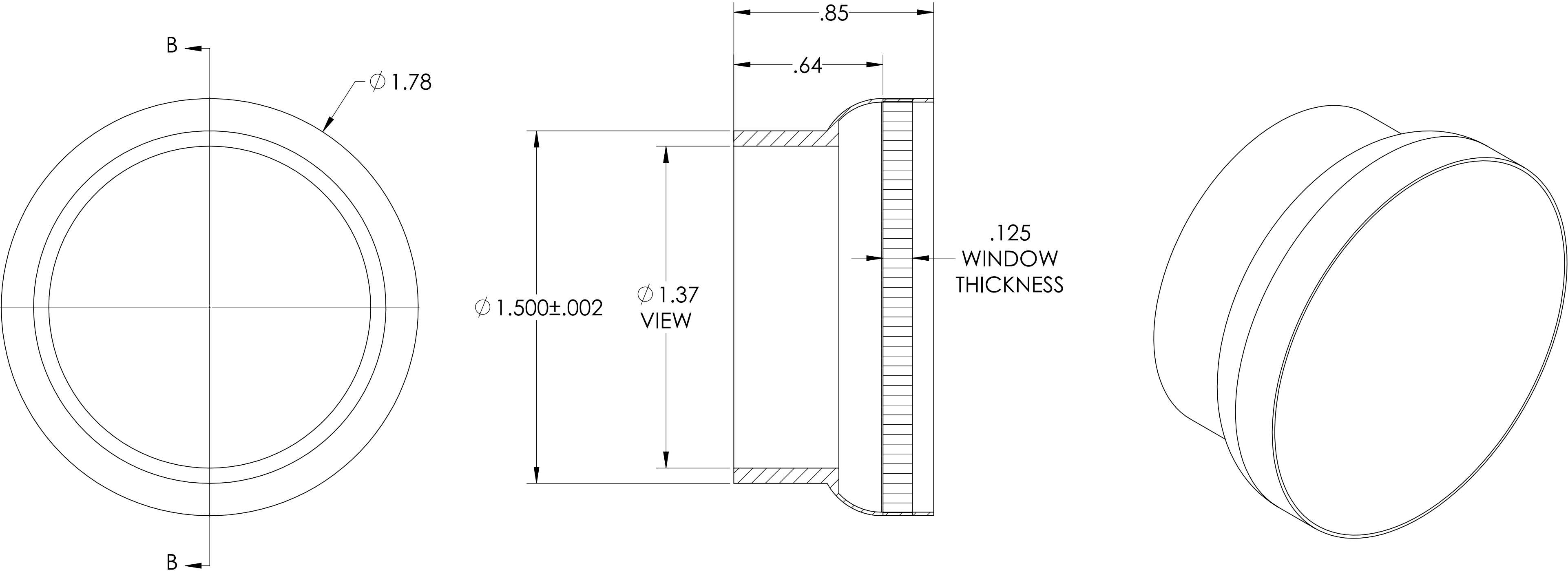
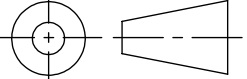



MPF PRODUCTS INC.



- NOTES:
- 1. MATERIAL: CORNING HPFS 7980 FUSED SILICA OR EQUIVALENT
 - 2. TWD < λ/4 @ 632NM (PEAK TO VALLEY)
 - 3. PARALLELISM < 10 ARC SECONDS
 - 4. SURFACE FINISH: 20/10 SCRATCH-DIG
 - 5. THERMAL RANGE: -100 °C TO 200 °C
 - 6. HOMOGENEITY GRADE: A
 - 7. INCLUSION CLASS: 0
 - 8. LEAK RATE < 1 X 10-9 ATM/CC SEC HE

Laser Grade Fused Silica Viewport, 1.37" View Dia, 1.50" Dia Stainless Steel Weld Adapter

UNLESS OTHERWISE SPECIFIED:	QUOTATION #		N/A	APPROVED	
DIMENSIONS ARE IN INCHES TOLERANCES:		NAME	DATE	MPF PRODUCTS INC.	
	DRAWN	WJ	9/11/2015		
	CHECKED		9/11/2015		
ANGULAR: MACH ± 1/2° TWO PLACE DECIMAL ± .030 THREE PLACE DECIMAL ± .015	ENG APPR.	WJ	9/11/2015	TITLE:	
MATERIAL SEE NOTES	THIRD ANGLE:			VIEWPORT, FUSED SILICA, LASER GRADE, 1.4" VIEW, WELD ADAPTER	
					
	APPLICATION				
	NEXT ASSY				
	USED ON				
FINISH	SURFACE FINISH:  OR BETTER			DOWNLOADED FROM MPFPI.COM	
WELDABLE	UNLESS OTHERWISE SPECIFIED:			DWG. NO.	
PLATING	ALL DIAMETERS CONCENTRIC WITHIN .005. REMOVE ALL BURRS AND SHARP EDGES			A0657-6-W	
				Thursday, January 24, 2019 11:02:37 AM	