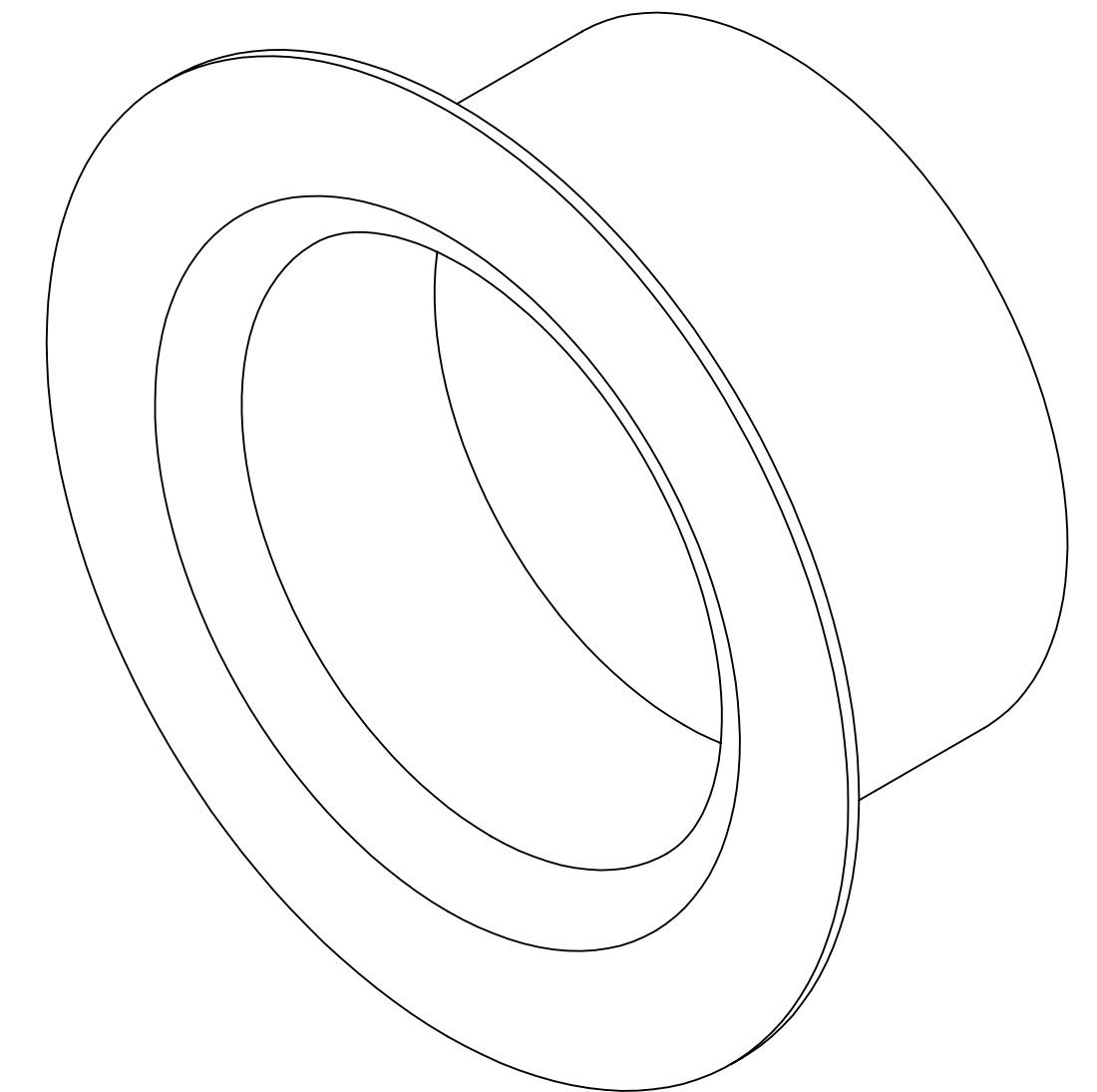
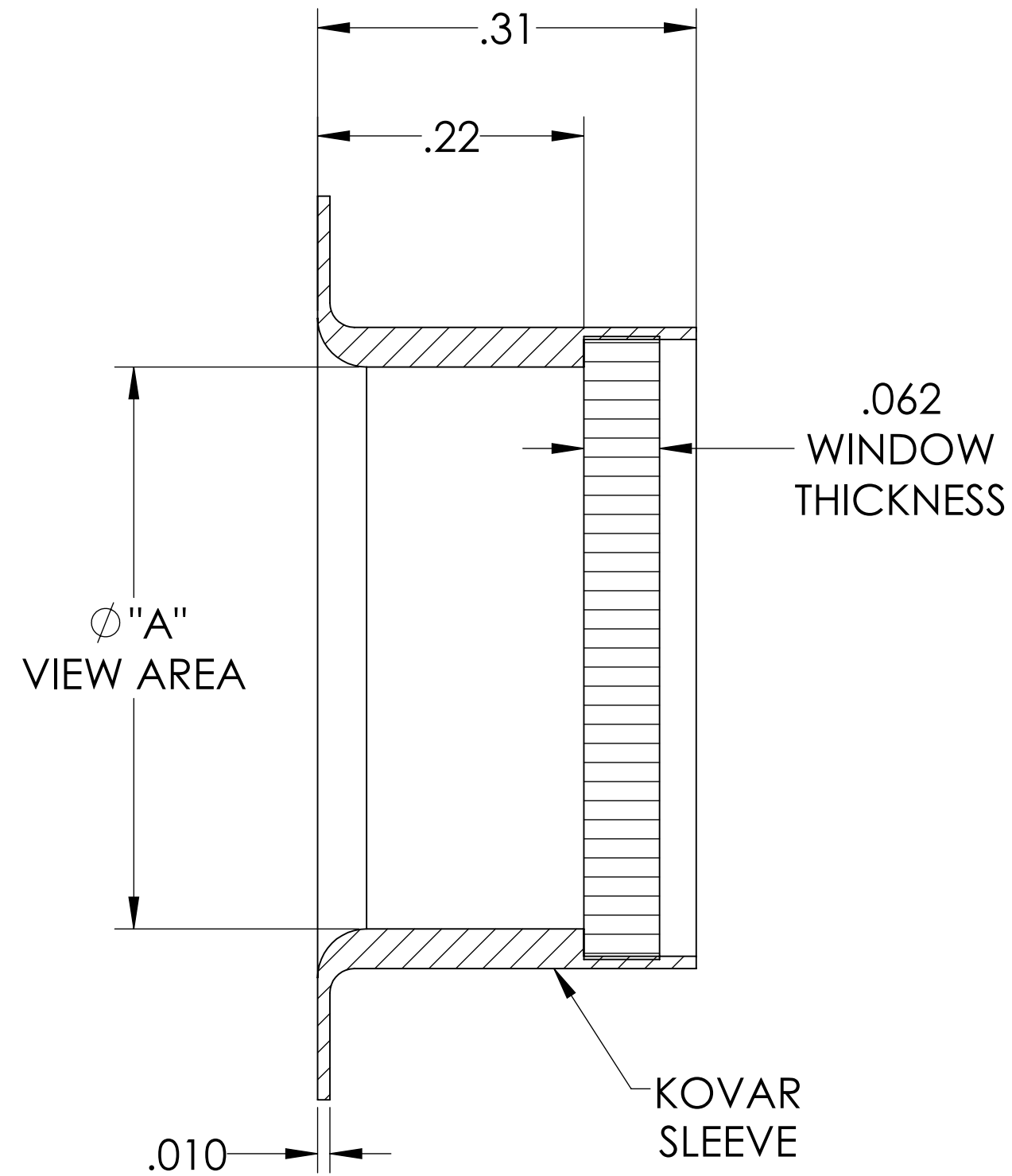
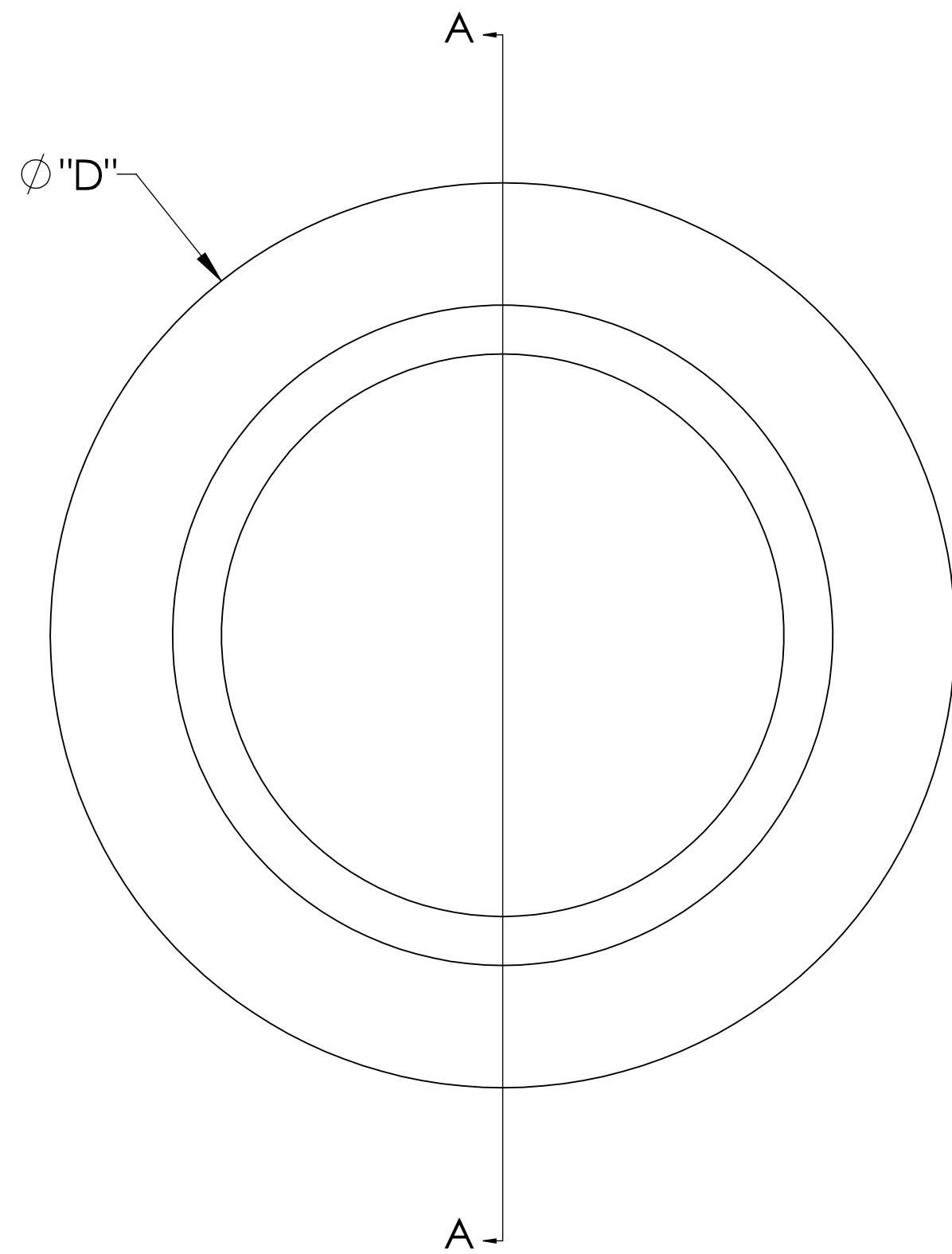


MPF PRODUCTS INC.



| PART# | ϕ "A" VIEW AREA | ϕ "D" |
|-----------|----------------------|------------|
| A0711-1-W | .34 | .615 |
| A0711-2-W | .46 | .740 |

SPECIFICATIONS:

1. MATERIAL: SAPPHIRE
2. TWD <math>< 8\lambda</math> @ 632nm (PEAK TO VALLEY)
3. PARALLELISM <math>< 3</math> ARC-MINUTES
4. SURFACE FINISH: 50-20 SCRATCH-DIG
5. THERMAL RANGE: -100 °C TO 450 °C
6. ORIENTATION: RANDOM
7. LEAK RATE <math>< 1 \times 10^{-9}</math> ATM CC/SEC HE

UV Grade Sapphire Viewport, 0.34", .46" Dia View, 0.62", .74" Dia Kovar Weld Adapter

| | | | |
|---|---|---------|-----------|
| UNLESS OTHERWISE SPECIFIED: | QUOTATION # | N/A | |
| DIMENSIONS ARE IN INCHES TOLERANCES: | DRAWN | NAME | DATE |
| ANGULAR: MACH $\pm 1/2^\circ$ | WJ | WJ | 9/11/2015 |
| TWO PLACE DECIMAL $\pm .030$ | CHECKED | | 9/11/2015 |
| THREE PLACE DECIMAL $\pm .015$ | ENG APPR. | WJ | 9/11/2015 |
| MATERIAL | THIRD ANGLE: | | |
| | | | |
| FINISH | APPLICATION | | |
| PLATING | NEXT ASSY | USED ON | |
| | SURFACE FINISH: $\sqrt{63}$ OR BETTER | | |
| | UNLESS OTHERWISE SPECIFIED: | | |
| | ALL DIAMETERS CONCENTRIC WITHIN .005. REMOVE ALL BURRS AND SHARP EDGES | | |
| | TITLE: | | REV |
| | VIEWPORT, SAPPHIRE, UV, WELD ADAPTER | | |
| | DWG. NO. | | |
| | A0711 | | |
| | Friday, January 25, 2019 3:30:34 PM | | |