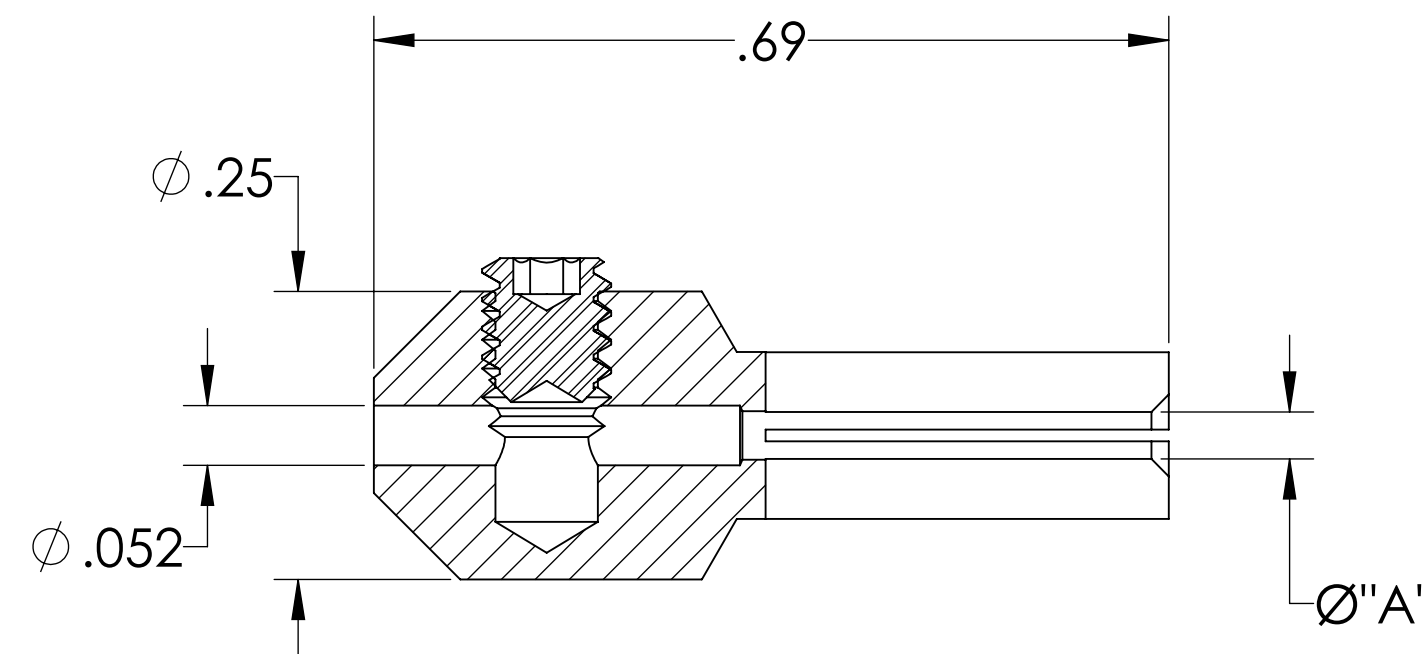


# MPF PRODUCTS INC.



PART #	$\phi "A"$ DIM
A0721-1-CN	.094
A0721-2-CN	.050
A0721-3-CN	.040
A0721-4-CN	.060
A0721-5-CN	.089
A0721-6-CN	.125

**SPECIFICATIONS:**

1. TEMPERATURE RATING: 150°C (AIR), 200°C (VACUUM)

Push-on Connectors, Beryllium-Copper alloy, Package of 10

UNLESS OTHERWISE SPECIFIED:		QUOTATION #		N/A	
DIMENSIONS ARE IN INCHES TOLERANCES:		NAME	DATE	MPF PRODUCTS INC.	
ANGULAR: MACH $\pm 1/2^\circ$		DRAWN	9/11/2015		
TWO PLACE DECIMAL $\pm .030$		CHECKED	9/11/2015		
THREE PLACE DECIMAL $\pm .015$		ENG APPR.	9/11/2015		
MATERIAL		THIRD ANGLE:		POWER CONNECTOR, PUSH-ON, BE-CU, PIN	
		APPLICATION			
		NEXT ASSY	USED ON	DOWNLOADED FROM MPFPI.COM	
FINISH		SURFACE FINISH: $\sqrt{32}$ OR BETTER		DWG. NO.	
PLATING		UNLESS OTHERWISE SPECIFIED:		A0721	
		ALL DIAMETERS CONCENTRIC WITHIN .005. REMOVE ALL BURRS AND SHARP EDGES		REV	
				Wednesday, February 13, 2019 8:18:00 AM	