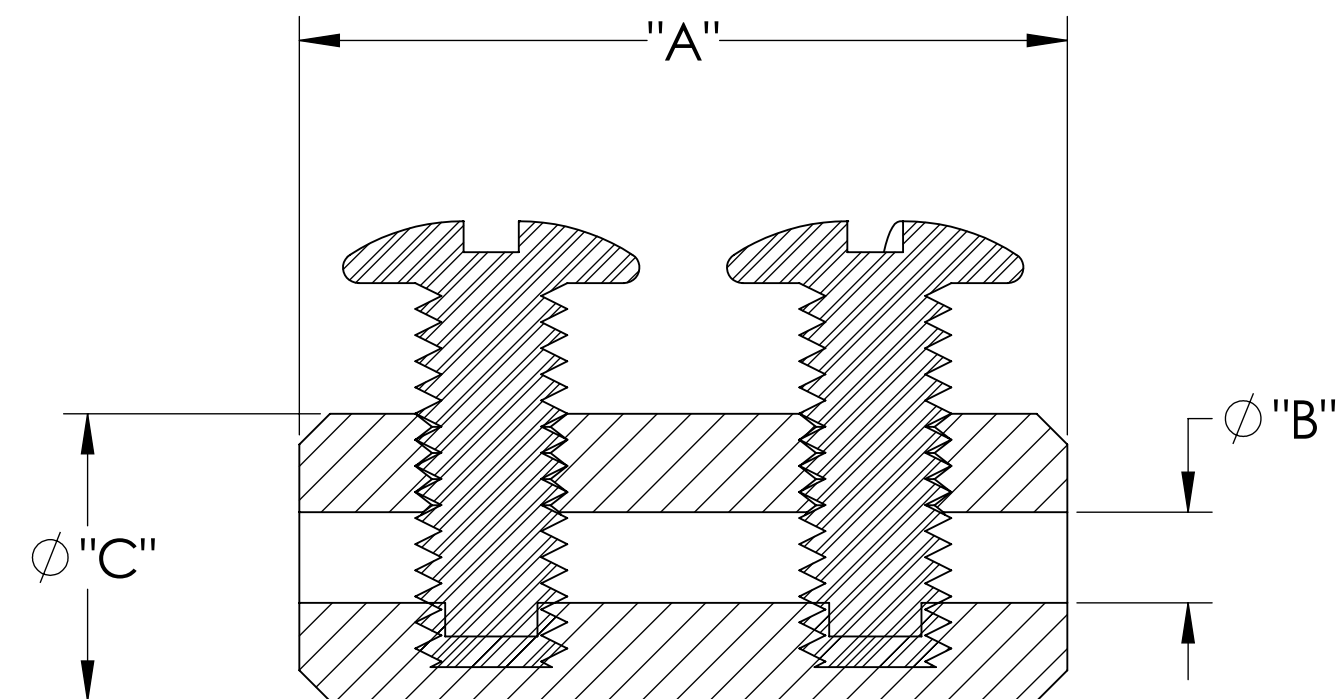


# MPF PRODUCTS INC.



PART #	"A"±.015	"Ø B"±.002	"Ø C"±.005
A0725-1-CN	.500	.059	.187
A0725-2-CN	.560	.120	.250
A0725-3-CN	.500	.067	.187
A0725-4-CN	.630	.134	.250
A0725-5-CN	.500	.041	.125
A0725-6-CN	1.00	.260	.500
A0725-7-CN	.560	.161	.350

**SPECIFICATIONS:**

1. TEMPERATURE RATING: 150°C (AIR), 400°C (VACUUM)

In-line Connectors, Beryllium-Copper alloy, Package of 10

UNLESS OTHERWISE SPECIFIED:		QUOTATION #		N/A	
DIMENSIONS ARE IN INCHES TOLERANCES:		NAME	DATE	MPF PRODUCTS INC.	
ANGULAR: MACH ± 1/2°		DRAWN	9/11/2015		
TWO PLACE DECIMAL ± .030		CHECKED	9/11/2015		
THREE PLACE DECIMAL ± .015		ENG APPR.	9/11/2015		
MATERIAL		THIRD ANGLE:		POWER CONNECTOR, IN-LINE, BE-CU	
		APPLICATION			
		NEXT ASSY	USED ON	DOWNLOADED FROM MPFPI.COM	
FINISH		SURFACE FINISH: 63 OR BETTER		DWG. NO.	
PLATING		UNLESS OTHERWISE SPECIFIED:		A0725	
		ALL DIAMETERS CONCENTRIC WITHIN .005. REMOVE ALL BURRS AND SHARP EDGES		REV	
				Wednesday, February 13, 2019 8:22:53 AM	