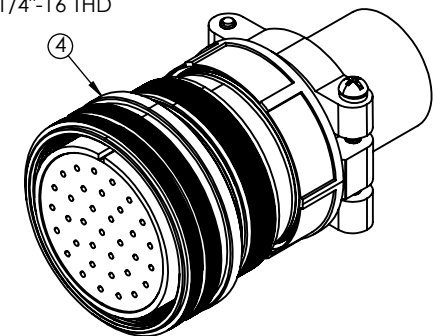
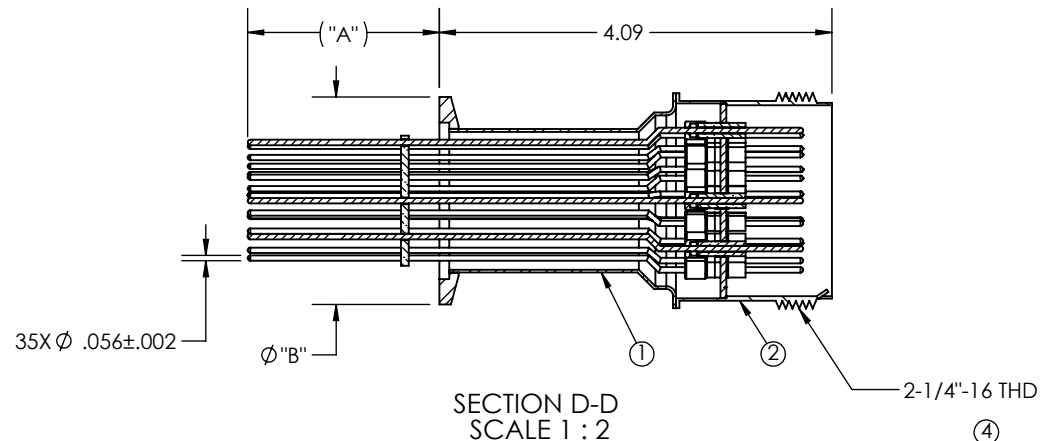
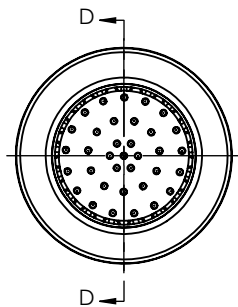
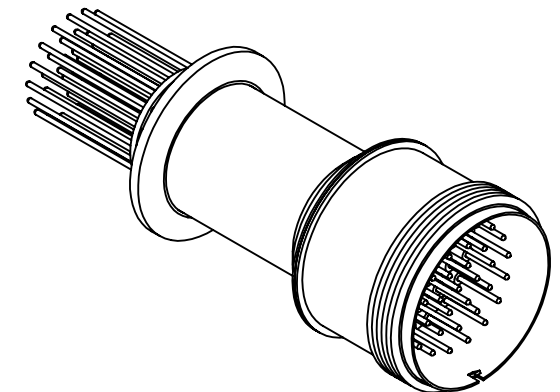


REV.	DESCRIPTION	DATE	APPROVED
F	UPDATED BOM	6/29/2023	AP



PART#	"A" REF	"B" QF	ADAPTER DWG	FLANGE DWG.
A0745-1-QF	2.00	2.16	A0737-1	A7599-2
A0745-2-QF	2.98	2.95	A0737-2	A0169-21
A0745-3-QF	2.00	2.95	A0737-1	A7599-13

ITEM NO.	DESCRIPTION	PART NUMBER	QTY
1	ADAPTER, 304 STN STL	SEE TABLE	1
2	(35x) PIN SUB-ASSEMBLY	A0738-1	1
3	35 PIN CONNECTOR	A0740-1-CN	1
4	2.16 QF WITH Ø1.500000 BORE	SEE TABLE	1

<p>UNLESS OTHERWISE SPECIFIED:</p> <p>DIMENSIONS ARE IN INCHES [] DIMENSIONS ARE IN MILLIMETERS FOR REFERENCE</p> <p>TOLERANCES: ANGULAR: MACH ± 1/2° TWO PLACE DECIMAL ± .030 [.76] THREE PLACE DECIMAL ± .015 [.381]</p> <p>ALL DIAMETERS CONCENTRIC WITHIN .005 [.127] REMOVE ALL BURRS AND SHARP EDGES</p> <p>MIN SURFACE FINISH: Ra 63 µin Ra 1.6 µm N7</p> <p>THIRD ANGLE PROJECTION: </p>	<p>QUOTATION #:</p>		<p>MPF PRODUCTS INC.</p> <p>TITLE:</p> <p>POWER 35X 700V, 10A QUICK FLANGE MOUNT</p>	
	<p>DRAWN: JB</p>	<p>NAME: JB</p>		<p>DATE: 06/06/2007</p>
	<p>CHECKED: JB</p>	<p>APPROVED: JB</p>		<p>DATE: 06/06/2007</p>
	<p>APPLICATION</p>			
	<p>USED ON:</p>	<p>BASED ON:</p>		
<p>MOUNT:</p>	<p>WEIGHT: 0.83</p>	<p>DWG NO: A0745</p>	<p>REV: F</p>	

Thursday, June 29, 2023 2:29:17 PM - BY: apetty