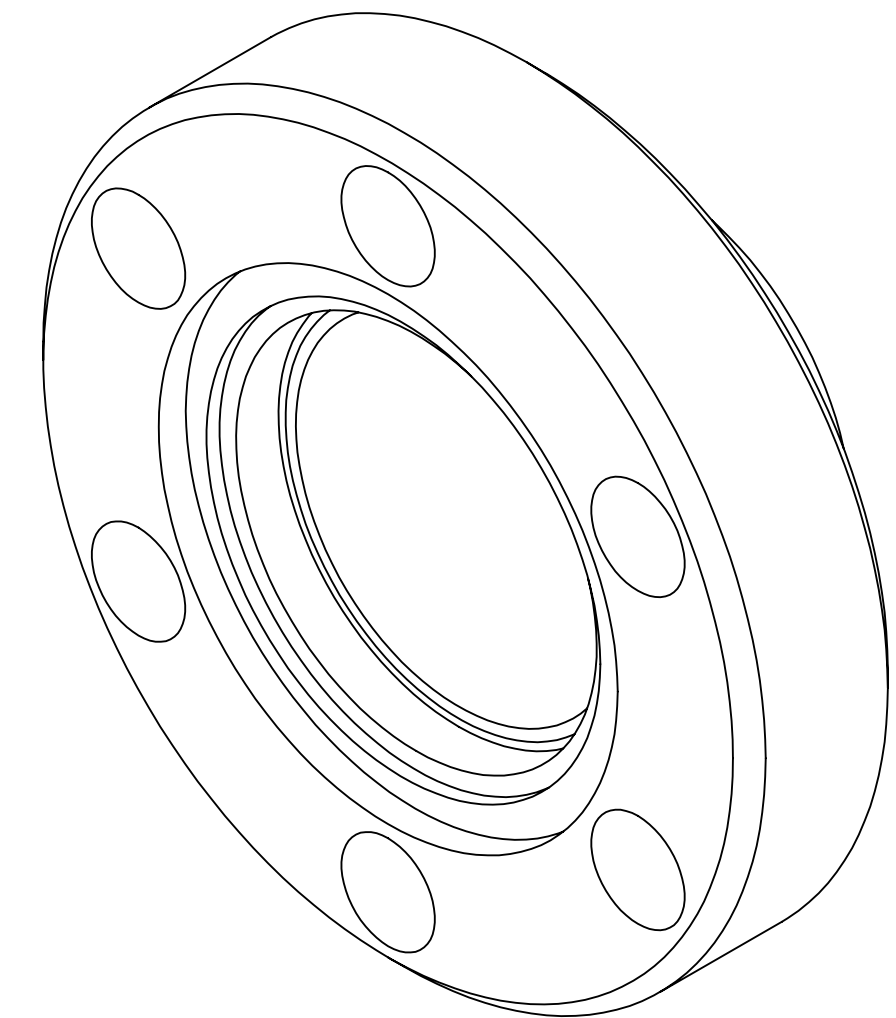
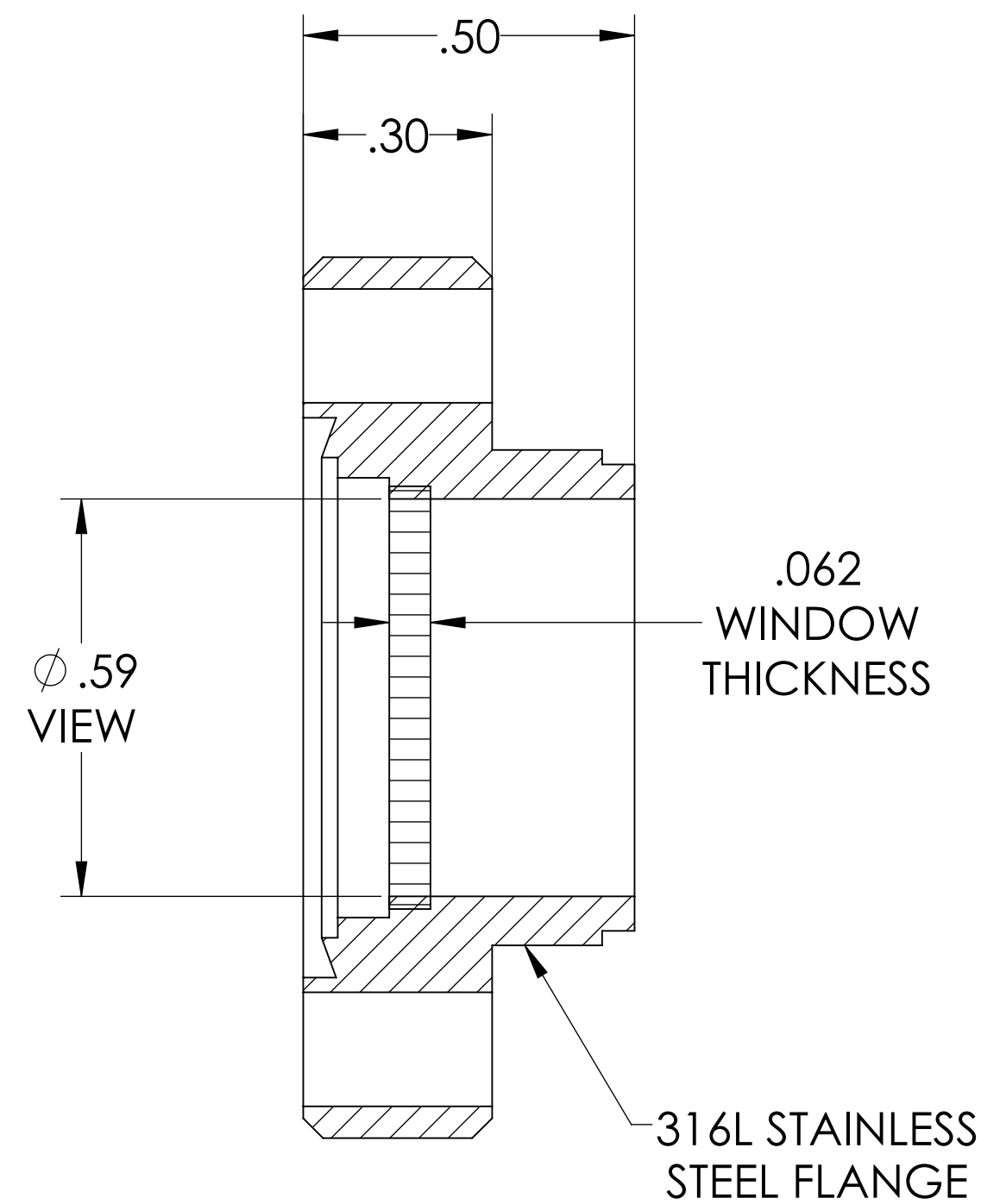
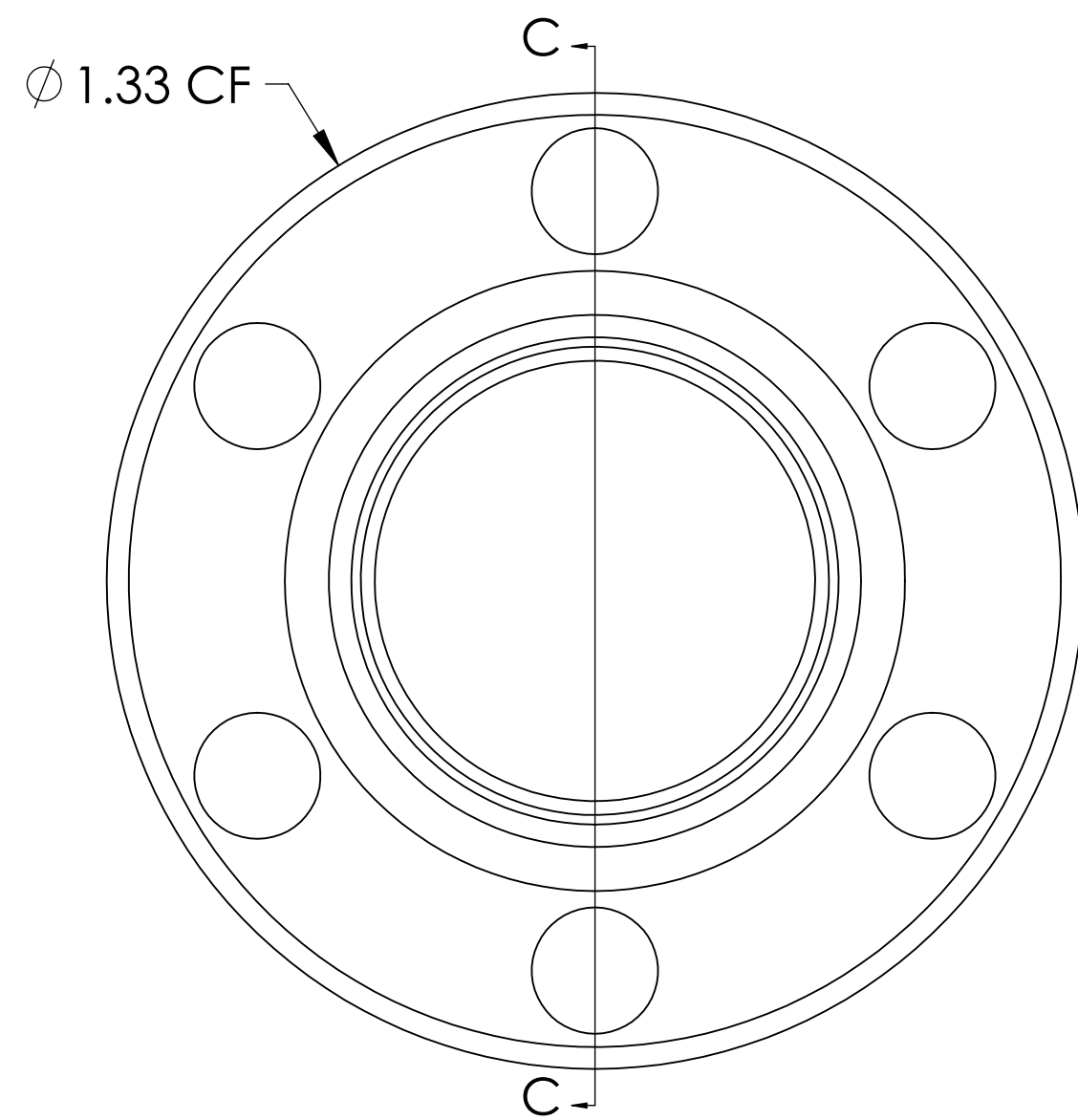


MPF PRODUCTS INC.



SPECIFICATIONS:

1. MATERIAL: SAPPHIRE
2. TWD <math>< 8\lambda</math> @ 632nm (PEAK TO VALLEY)
3. PARALLELISM <math>< 3</math> ARC-MINUTES
4. SURFACE FINISH: 50-20 SCRATCH-DIG
5. THERMAL RANGE: -100 °C TO 450 °C
6. ORIENTATION: RANDOM
7. LEAK RATE <math>< 1 \times 10^{-9}</math> ATM CC/SEC HE

UV Grade Sapphire Viewport, 0.59" View Dia, 1.33" Conflat Flange

UNLESS OTHERWISE SPECIFIED:	QUOTATION #	N/A	
DIMENSIONS ARE IN INCHES TOLERANCES:	DRAWN	NAME	DATE
ANGULAR: MACH $\pm 1/2^\circ$	WJ	WJ	9/11/2015
TWO PLACE DECIMAL $\pm .030$	CHECKED		9/11/2015
THREE PLACE DECIMAL $\pm .015$	ENG APPR.	WJ	9/11/2015
MATERIAL	THIRD ANGLE:		
FINISH	APPLICATION		
PLATING	NEXT ASSY	USED ON	
	SURFACE FINISH:	63	OR BETTER
	UNLESS OTHERWISE SPECIFIED:	ALL DIAMETERS CONCENTRIC WITHIN .005. REMOVE ALL BURRS AND SHARP EDGES	
	MPF PRODUCTS INC.	VIEWPORT, SAPPHIRE, UV, 0.6 VIEW, 133CF	
	DOWNLOADED FROM MPFPI.COM	DWG. NO.	REV
		A0808-1-CF	
	Thursday, January 24, 2019 10:55:02 AM		