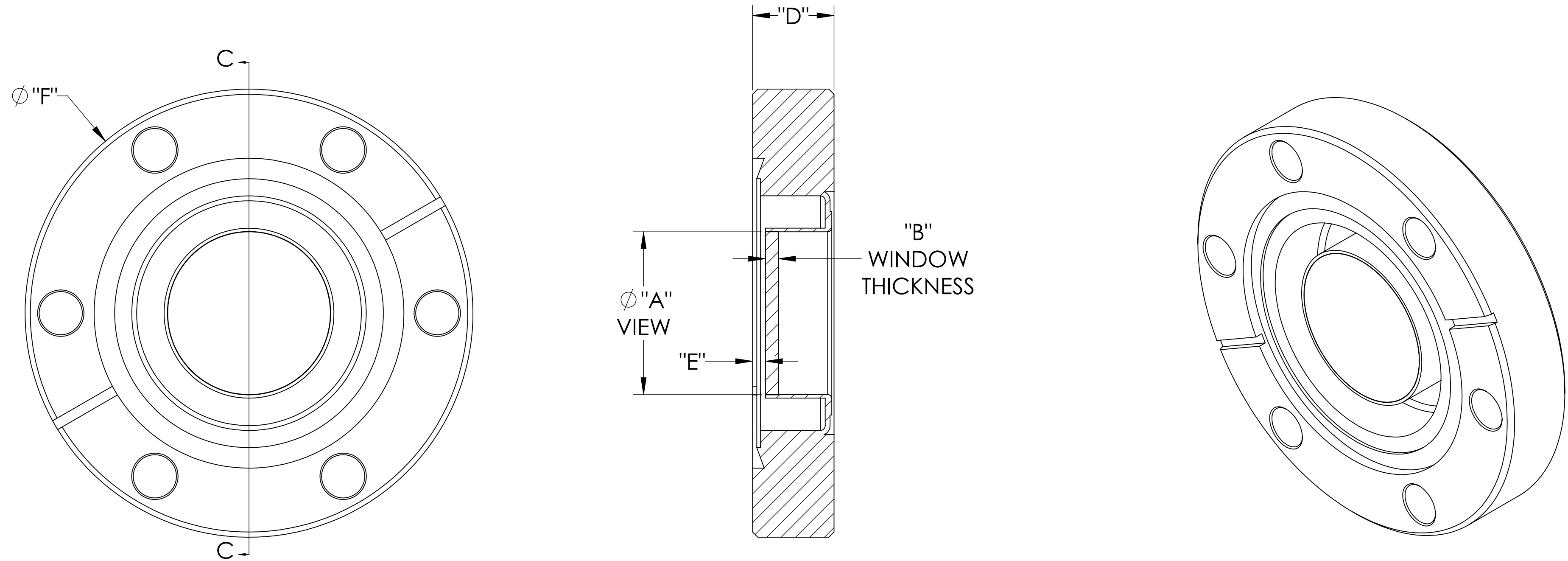


MPF PRODUCTS INC.



PART #	Ø "A" VIEW AREA	"B"	"D"	"E"	"F"
A0810-1-CF	.69	.080	.50	.08	2.75
A0810-2-CF	.94	.080	.50	.08	2.75
A0810-3-CF	1.44	.080	.68	.13	4.50
A0810-4-CF	1.94	.094	.68	.10	4.50

SPECIFICATIONS:

1. MATERIAL: SAPPHIRE
2. TWD < 8λ @ 632nm (PEAK TO VALLEY)
3. PARALLELISM < 3 ARC-MINUTES
4. SURFACE FINISH: 50-20 SCRATCH-DIG
5. THERMAL RANGE: -100 °C TO 450 °C
6. ORIENTATION: RANDOM
7. LEAK RATE < 1X10-9 ATM CC/SEC HE

UV Grade Sapphire Viewport, 0.69", 094", 1.44", 1.94" View Dia, 2.75", 4.50" Conflat Flange

UNLESS OTHERWISE SPECIFIED:		QUOTATION #		N/A	
DIMENSIONS ARE IN INCHES TOLERANCES:		NAME	DATE	MPF PRODUCTS INC.	
ANGULAR: MACH ± 1/2°		DRAWN	9/11/2015		
TWO PLACE DECIMAL ± .030		CHECKED	9/11/2015		
THREE PLACE DECIMAL ± .015		ENG APPR.	9/11/2015		
MATERIAL		THIRD ANGLE:		VIEWPORT, SAPPHIRE, UV, CF FLANGE	
FINISH		APPLICATION			
PLATING		NEXT ASSY	USED ON	DOWNLOADED FROM MPFPI.COM	
		SURFACE FINISH: 63 OR BETTER		DWG. NO.	
		UNLESS OTHERWISE SPECIFIED:		A0810	
		ALL DIAMETERS CONCENTRIC WITHIN .005. REMOVE ALL BURRS AND SHARP EDGES		REV	
		Thursday, January 24, 2019 10:54:25 AM			