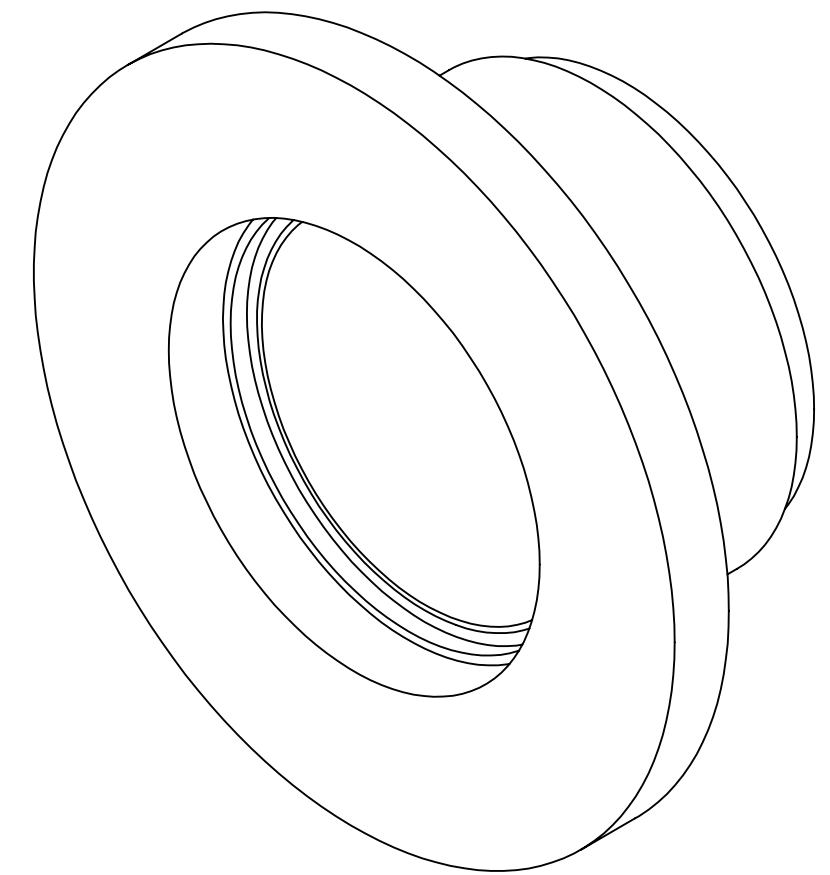
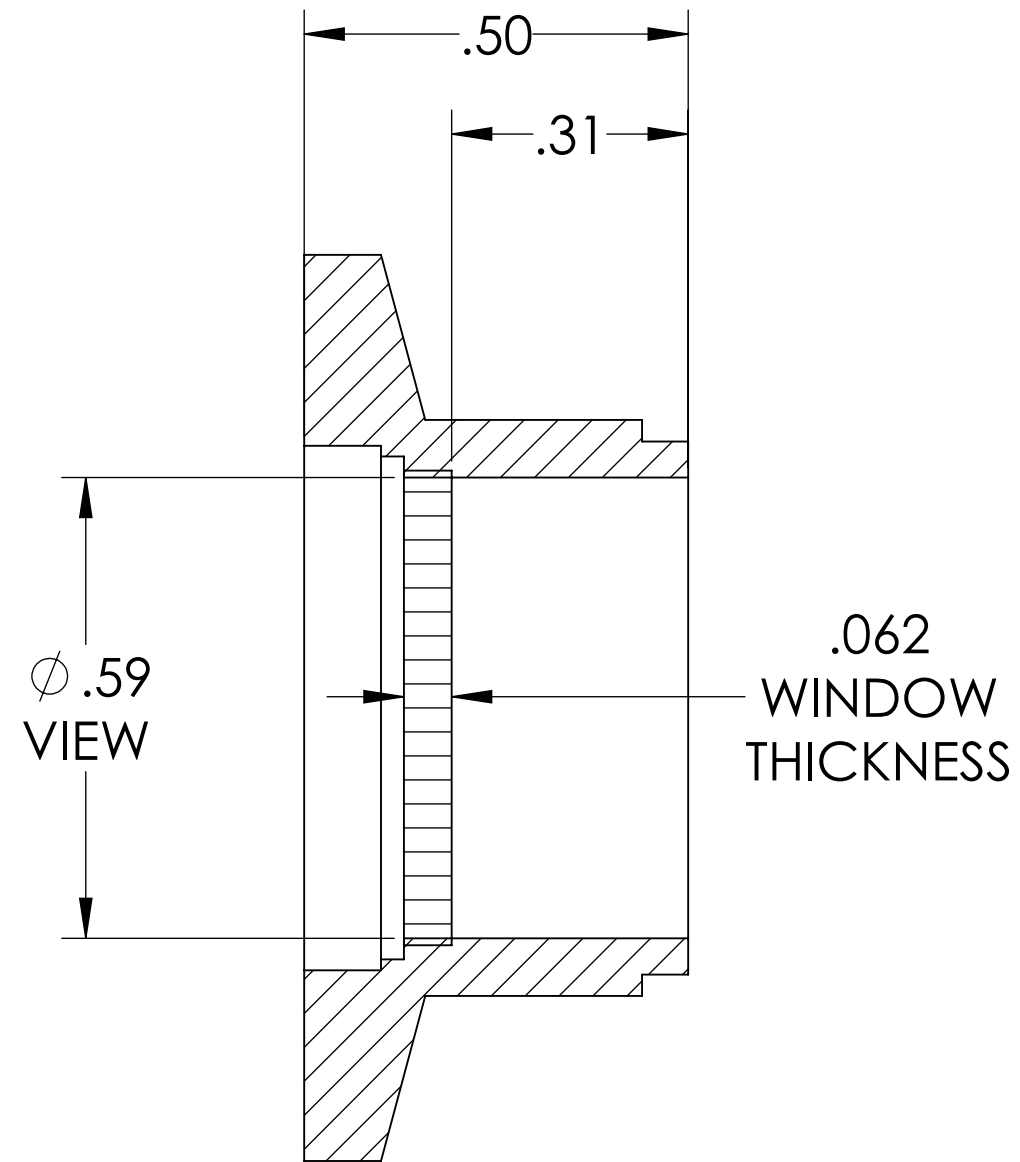
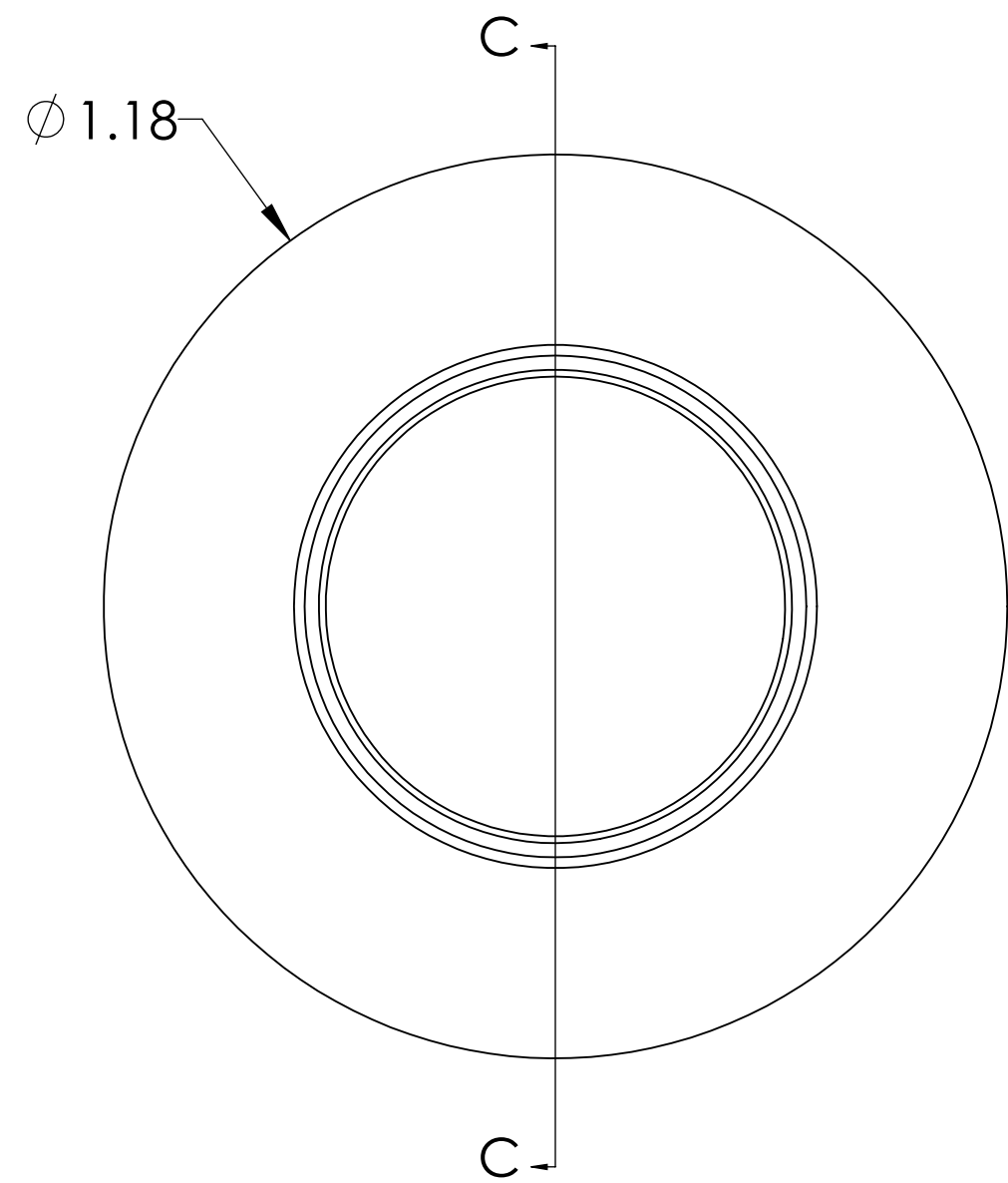


# MPF PRODUCTS INC.



**SPECIFICATIONS:**

1. MATERIAL: SAPPHIRE
2. TWD <math>< 8\lambda</math> @632nm (PEAK TO VALLEY)
3. PARALLELISM <math>< 3</math> ARC MINUTES
4. SURFACE FINISH: 50/20 SCRATCH-DIG
5. THERMAL RANGE: -100°C TO 450°C
6. ORIENTATION: RANDOM
7. LEAK RATE <math>< 1 \times 10^{-9}</math> ATM CC/SEC HE

UV Grade Sapphire Viewport, 0.59" View Dia, 1.18" QF/KF

UNLESS OTHERWISE SPECIFIED:		QUOTATION #		N/A	
DIMENSIONS ARE IN INCHES		NAME	DATE	MPF PRODUCTS INC.	
TOLERANCES:		WJ	9/11/2015		
ANGULAR: MACH $\pm 1/2^\circ$		CHECKED	9/11/2015		
TWO PLACE DECIMAL $\pm .030$		ENG APPR.	WJ 9/11/2015		
THREE PLACE DECIMAL $\pm .015$		THIRD ANGLE:		VIEWPORT, SAPPHIRE, UV, 0.59" VIEW, QF/KF 16	
MATERIAL					
FINISH		APPLICATION			
PLATING		NEXT ASSY USED ON			
SURFACE FINISH:		63/ OR BETTER		DOWNLOADED FROM MPFPI.COM	
UNLESS OTHERWISE SPECIFIED:		ALL DIAMETERS CONCENTRIC WITHIN .005.		DWG. NO.	
REMOVE ALL BURRS AND SHARP EDGES		Thursdays, January 24, 2019 10:53:06 AM		REV	