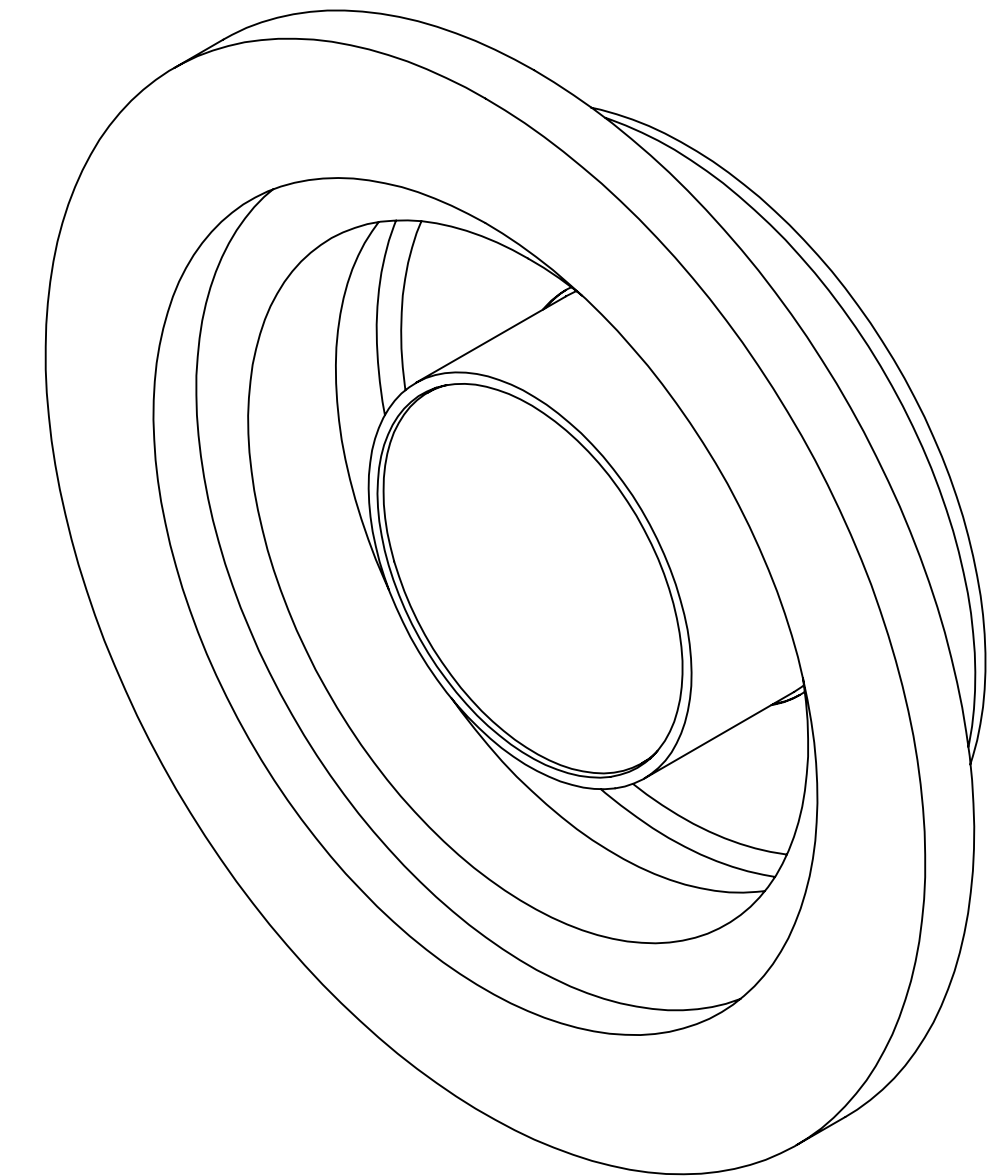
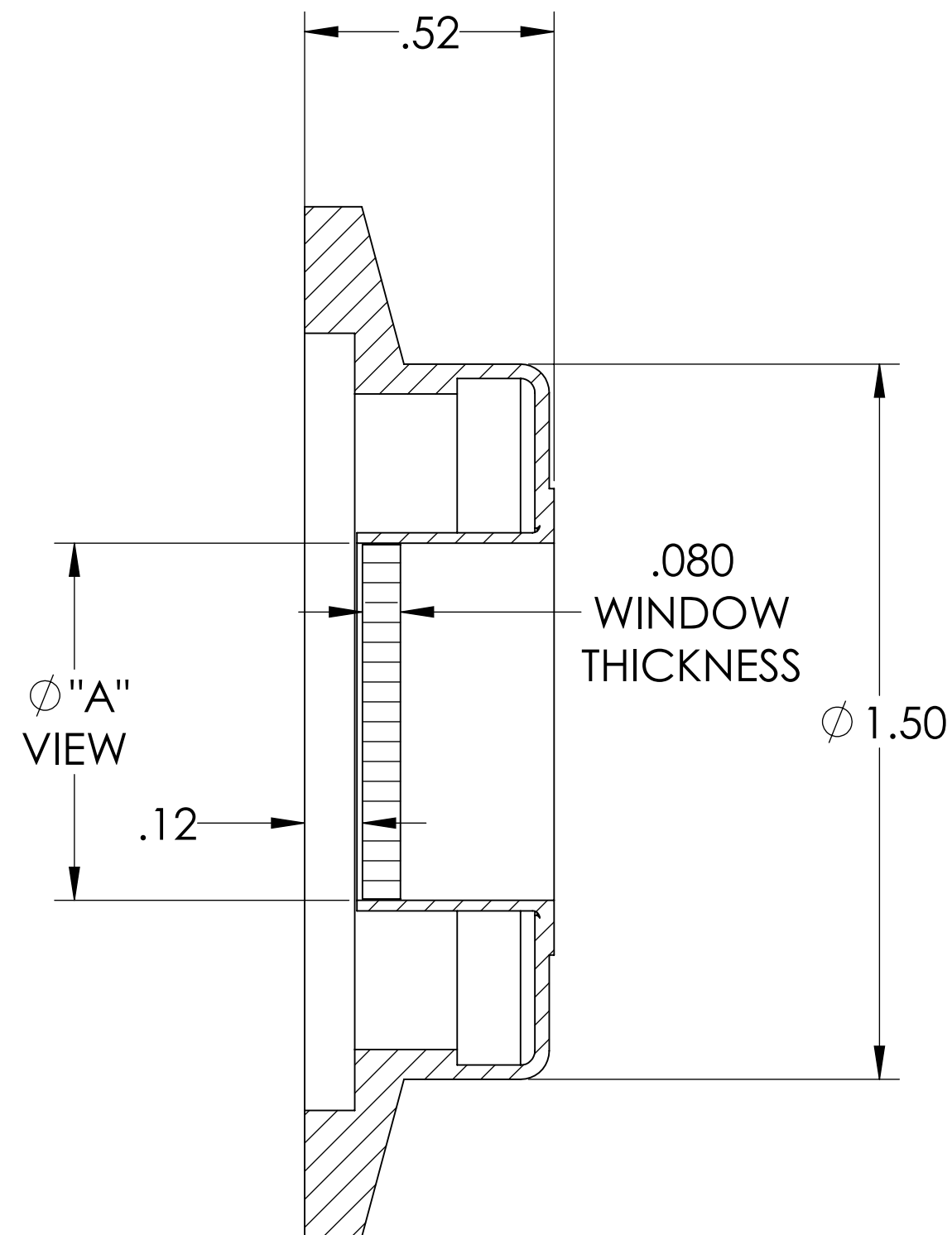
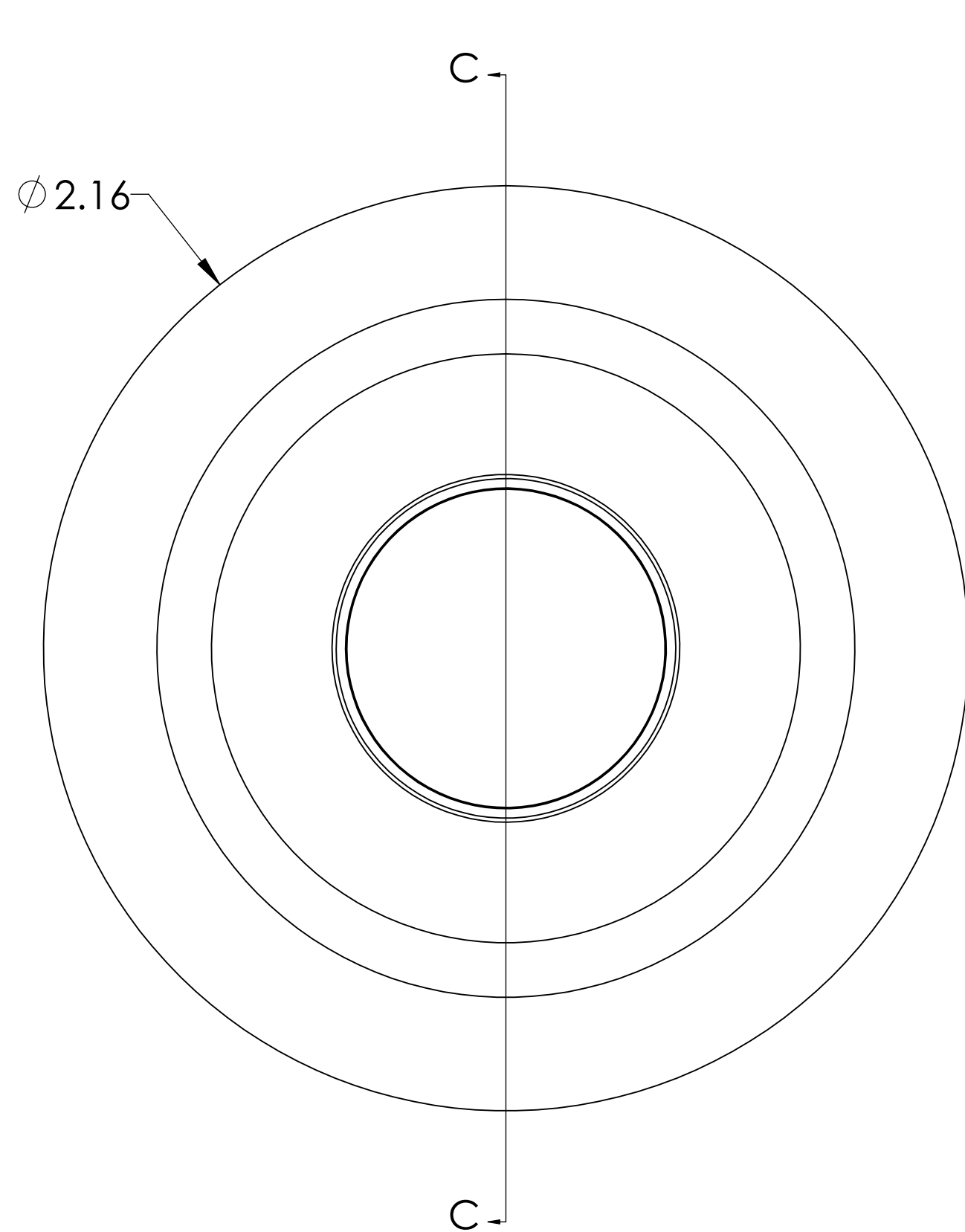


MPF PRODUCTS INC.



PART #	Ø "A" VIEW AREA
A0814-1-QF	.69
A0814-2-QF	.94

SPECIFICATIONS:

1. MATERIAL: SAPPHIRE
2. TWD < 8λ @632nm (PEAK TO VALLEY)
3. PARALLELISM < 3 ARC MINUTES
4. SURFACE FINISH: 50/20 SCRATCH-DIG
5. THERMAL RANGE: -100 °C TO 450 °C
6. ORIENTATION: 0-90 °
7. LEAK RATE < 1 X 10⁻⁹ ATM CC/SEC HE

UV Grade Sapphire Viewport, 0.69", 0.94" View Dia, 2.16" QF/KF

UNLESS OTHERWISE SPECIFIED:	QUOTATION #	N/A
DIMENSIONS ARE IN INCHES TOLERANCES:	NAME	DATE
ANGULAR: MACH ± 1/2°	WJ	9/11/2015
TWO PLACE DECIMAL ± .030	CHECKED	9/11/2015
THREE PLACE DECIMAL ± .015	ENG APPR.	WJ 9/11/2015
MATERIAL	THIRD ANGLE:	
FINISH	APPLICATION	
PLATING	NEXT ASSY	USED ON
	SURFACE FINISH:	63 OR BETTER
	UNLESS OTHERWISE SPECIFIED:	
	ALL DIAMETERS CONCENTRIC WITHIN .005. REMOVE ALL BURRS AND SHARP EDGES	
	TITLE:	VIEWPORT, SAPPHIRE, UV, 0.69", 0.94" VIEW, QF/KF 40
	DOWNLOADED FROM MPFPI.COM	
	DWG. NO.	A0814
	REV	
	Thursday, January 24, 2019 10:51:44 AM	