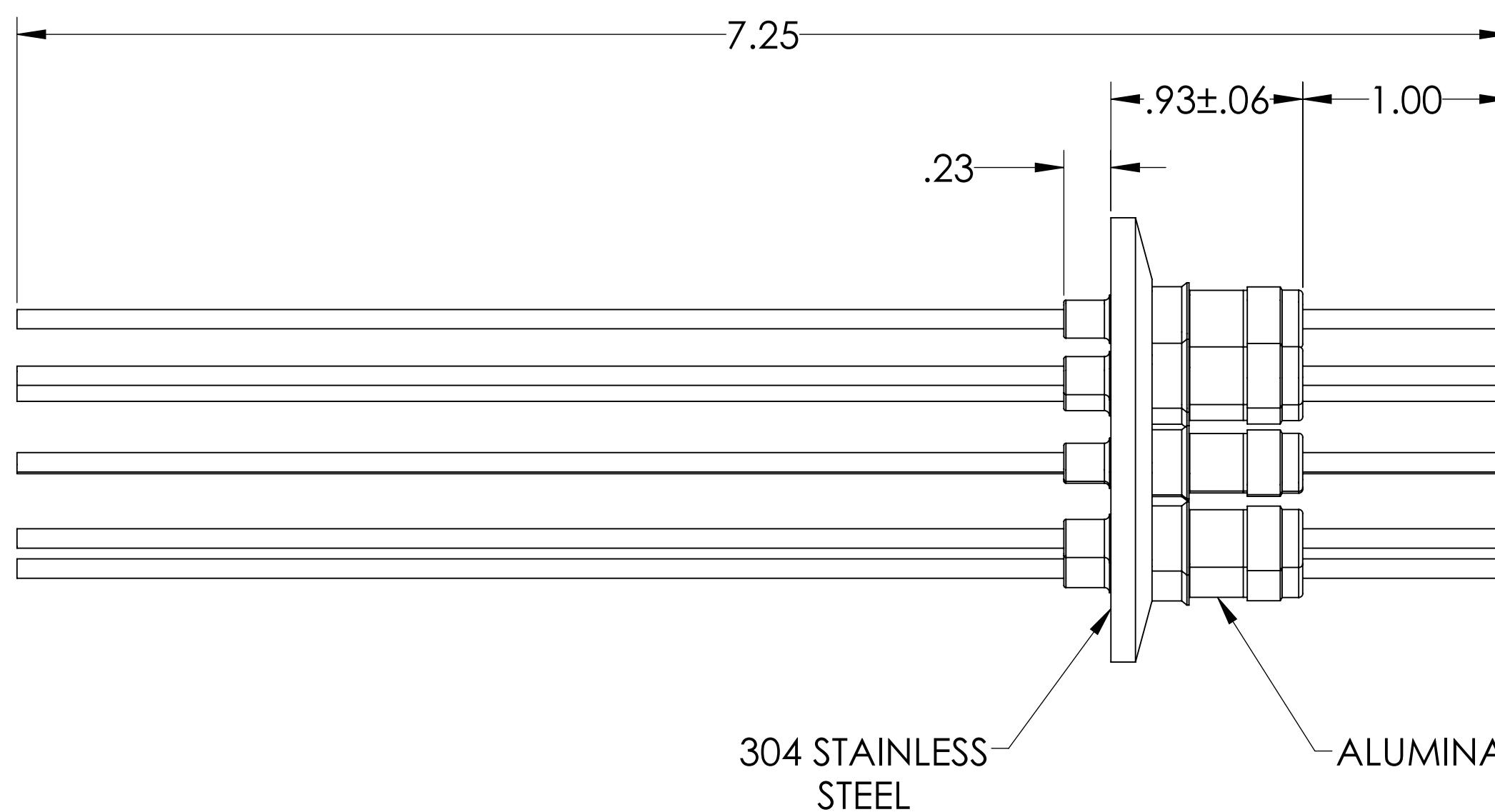
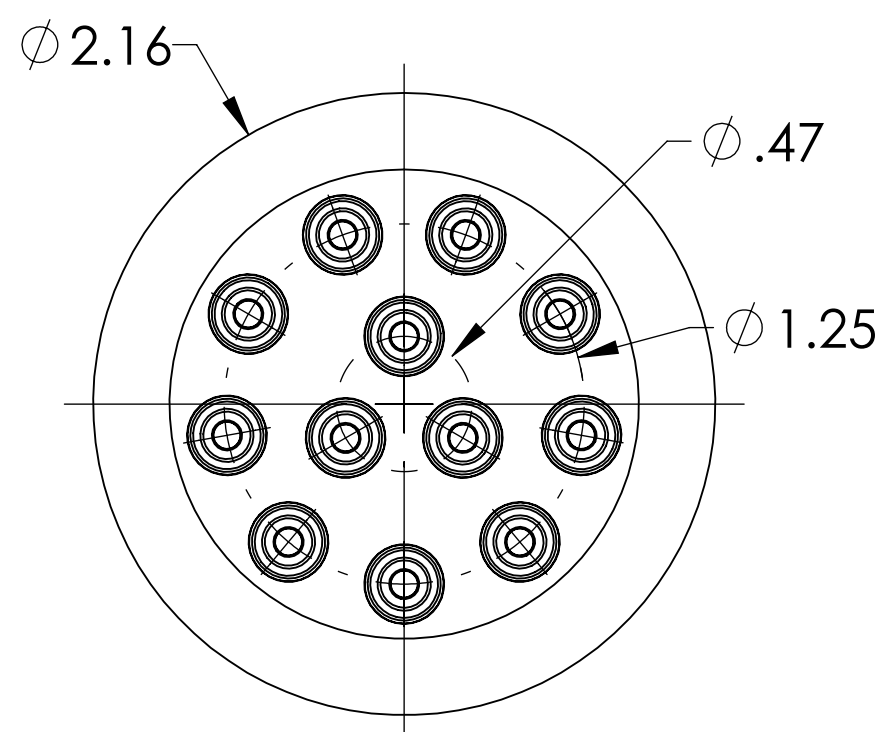
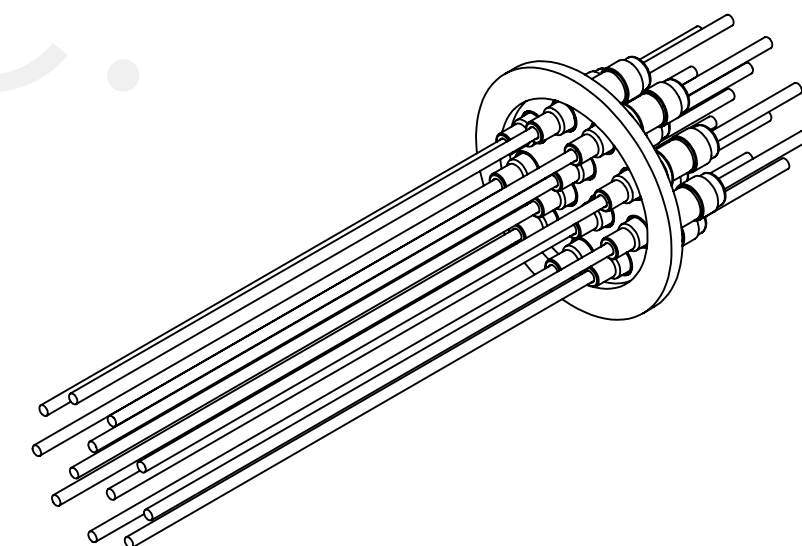


# MPF PRODUCTS INC.



PART #	Ø "A"	CONDUCTOR MATERIAL	CURRENT RATING
A0820-1-QF	.092	NICKEL 200	15 AMPS
A0820-2-QF	.094	OFHC COPPER	50 AMPS
A0820-5-QF	.094	MOLYBDENUM	28 AMPS

- NOTE:
- VOLTAGE: 5,000 VOLTS DC
  - CURRENT: SEE TABLE
  - TEMPERATURE RATING: -100 TO 450°C

Power Feedthrough, 5000 Volts, 12 Pins, 2.16" QF/KF, UHV Rated, Bakeable to 450°C

UNLESS OTHERWISE SPECIFIED:		QUOTATION #		N/A	
DIMENSIONS ARE IN INCHES TOLERANCES:		DRAWN	WJ	DATE	9/11/2015
ANGULAR: MACH ± 1/2°		CHECKED		9/11/2015	MPF PRODUCTS INC.
TWO PLACE DECIMAL ± .030		ENG APPR.	WJ	9/11/2015	
THREE PLACE DECIMAL ± .015		THIRD ANGLE:		TITLE:	
MATERIAL				POWER FEEDTHROUGH, 5000 VOLTS, 12 PINS, 2.16" QF/KF	
FINISH		APPLICATION		DOWNLOADED FROM MPFPI.COM	
PLATING		NEXT ASSY		DWG. NO.	
		USED ON		A0820	
		SURFACE FINISH: 63 OR BETTER		REV	
		UNLESS OTHERWISE SPECIFIED:		Friday, December 7, 2018 2:24:59 PM	
		ALL DIAMETERS CONCENTRIC WITHIN .005. REMOVE ALL BURRS AND SHARP EDGES			