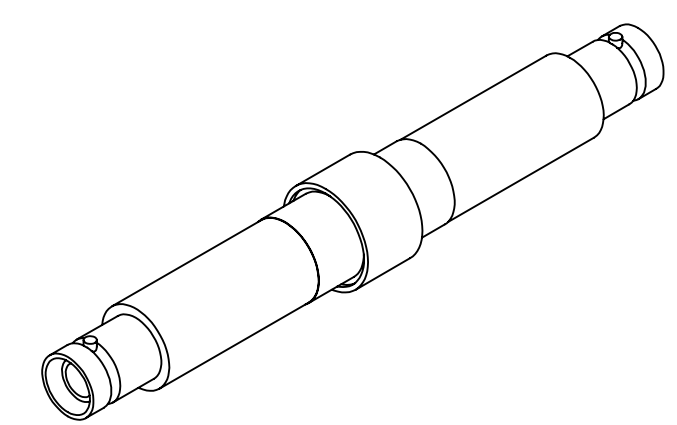
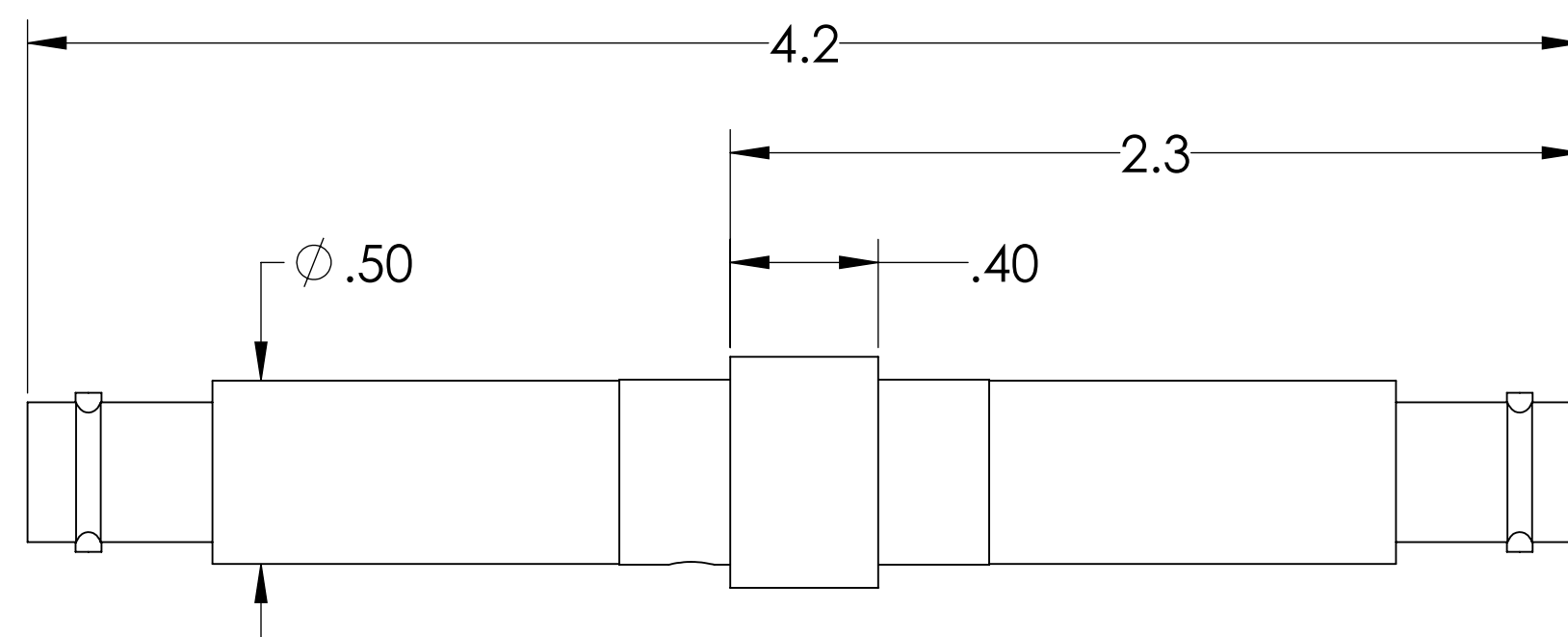
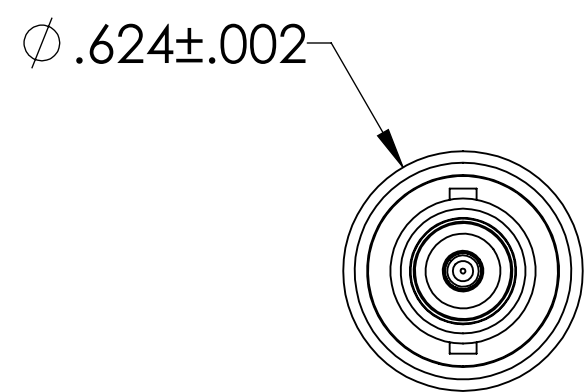
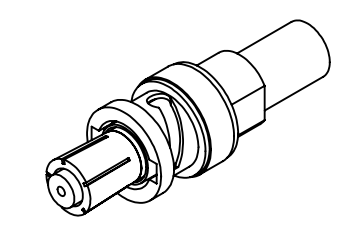


# MPF PRODUCTS INC.



PART #	AIRSIDE CONNECTOR INCLUDED
A0858-1-W	YES
A0858-2-W	NO



**NOTE:**

1. SHIELD: GROUNDED
2. VOLTAGE: 5000 VOLTS DC
3. CURRENT: 5 AMPS
4. TEMPERATURE RATING: -200 TO 450°C (FEEDTHROUGH), 65 TO 165°C (AIRSIDE CONNECTOR)
5. IMPEDANCE: NON-CONSTANT

SHV-5 Coaxial Feedthrough, 1 Pin, Grounded Shield, Double Ended, 0.624" Dia SS Weld Adapter, UHV Compatible

UNLESS OTHERWISE SPECIFIED:	QUOTATION #		N/A
DIMENSIONS ARE IN INCHES	NAME	DATE	MPF PRODUCTS INC.
TOLERANCES:	WJ	9/11/2015	
ANGULAR: MACH $\pm 1/2^\circ$	CHECKED	9/11/2015	
TWO PLACE DECIMAL $\pm .030$	ENG APPR.	WJ	
THREE PLACE DECIMAL $\pm .015$	THIRD ANGLE:		TITLE:
MATERIAL			SHV-5 COAXIAL FEEDTHROUGH, 1 PIN, GROUNDED SHIELD, DOUBLE ENDED, 0.624" DIA SS WELD ADAPTER
FINISH	APPLICATION		DOWNLOADED FROM MPFPI.COM
PLATING	NEXT ASSY		DWG. NO.
	SURFACE FINISH: $\sqrt{63}$ OR BETTER		A0858
	UNLESS OTHERWISE SPECIFIED:		REV
	ALL DIAMETERS CONCENTRIC WITHIN .005. REMOVE ALL BURRS AND SHARP EDGES		Monday, October 8, 2018 9:30:30 AM