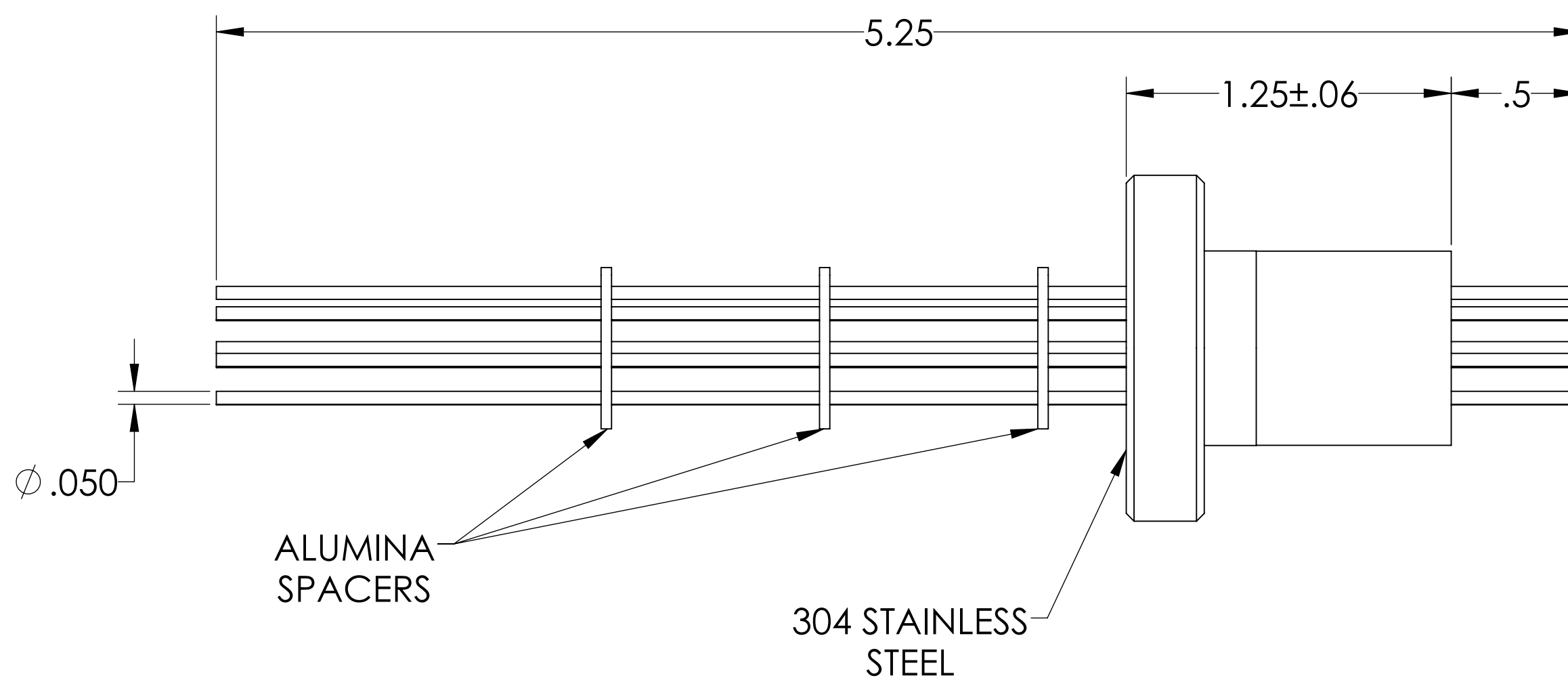
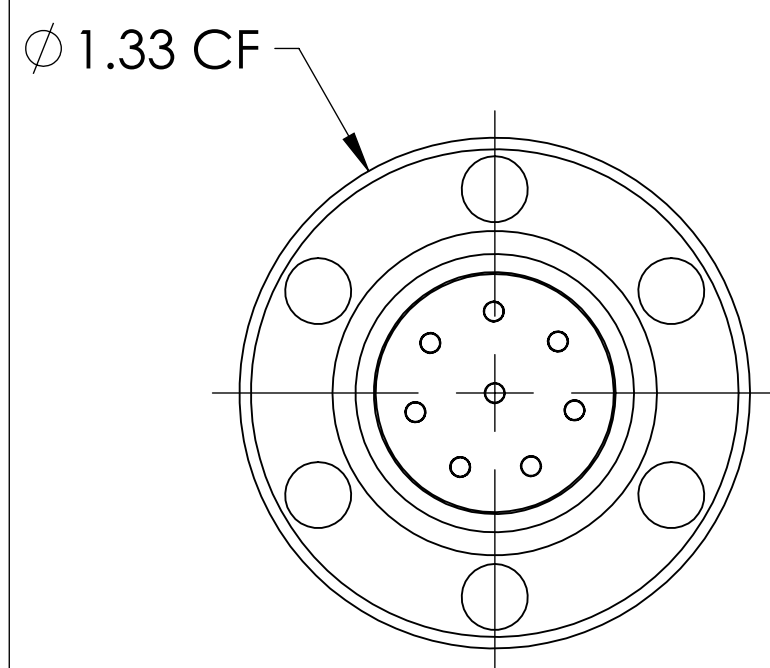
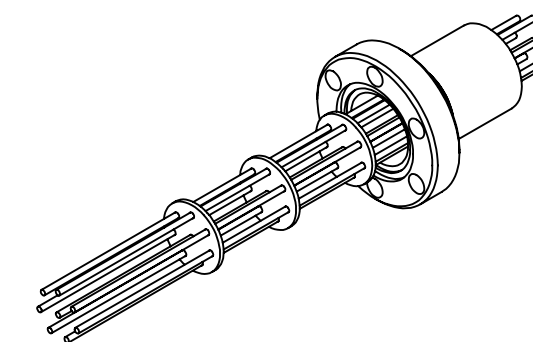


MPF PRODUCTS INC.



PART #	CONDUCTOR MATERIAL	CURRENT RATING
A0863-1-CF	KOVAR	7 AMPS
A0863-2-CF	MOLYBDENUM	13 AMPS
A0863-3-CF	OFHC COPPER	25 AMPS
A0863-4-CF	NICKEL	8 AMPS
A0863-5-CF	STN STL	1 AMP

NOTE:

- VOLTAGE: 1000 VOLTS DC
- CURRENT: SEE TABLE
- TEMPERATURE RATING: -100 TO 450°C

Power Feedthrough, 1000 Volts, 8 Pins, 0.050" Conductors, 1.33" Conflat Flange, UHV Rated, Bakeable to 450°C

UNLESS OTHERWISE SPECIFIED:		QUOTATION #		N/A	
DIMENSIONS ARE IN INCHES TOLERANCES:		NAME	DATE	MPF PRODUCTS INC.	
ANGULAR: MACH ± 1/2°		DRAWN	9/11/2015		
TWO PLACE DECIMAL ± .030		CHECKED	9/11/2015		
THREE PLACE DECIMAL ± .015		ENG APPR.	9/11/2015		
MATERIAL		THIRD ANGLE:		POWER FEEDTHROUGH, 1000 VOLTS, 8 PINS, 1.33" CONFLAT FLANGE	
FINISH		APPLICATION			
PLATING		NEXT ASSY USED ON			
SURFACE FINISH: 63 OR BETTER		SURFACE FINISH: 63 OR BETTER		DOWNLOADED FROM MPFPI.COM	
UNLESS OTHERWISE SPECIFIED:		UNLESS OTHERWISE SPECIFIED:		DWG. NO. A0863	
ALL DIAMETERS CONCENTRIC WITHIN .005. REMOVE ALL BURRS AND SHARP EDGES		ALL DIAMETERS CONCENTRIC WITHIN .005. REMOVE ALL BURRS AND SHARP EDGES		REV	
				Tuesday, January 22, 2019 11:01:10 AM	