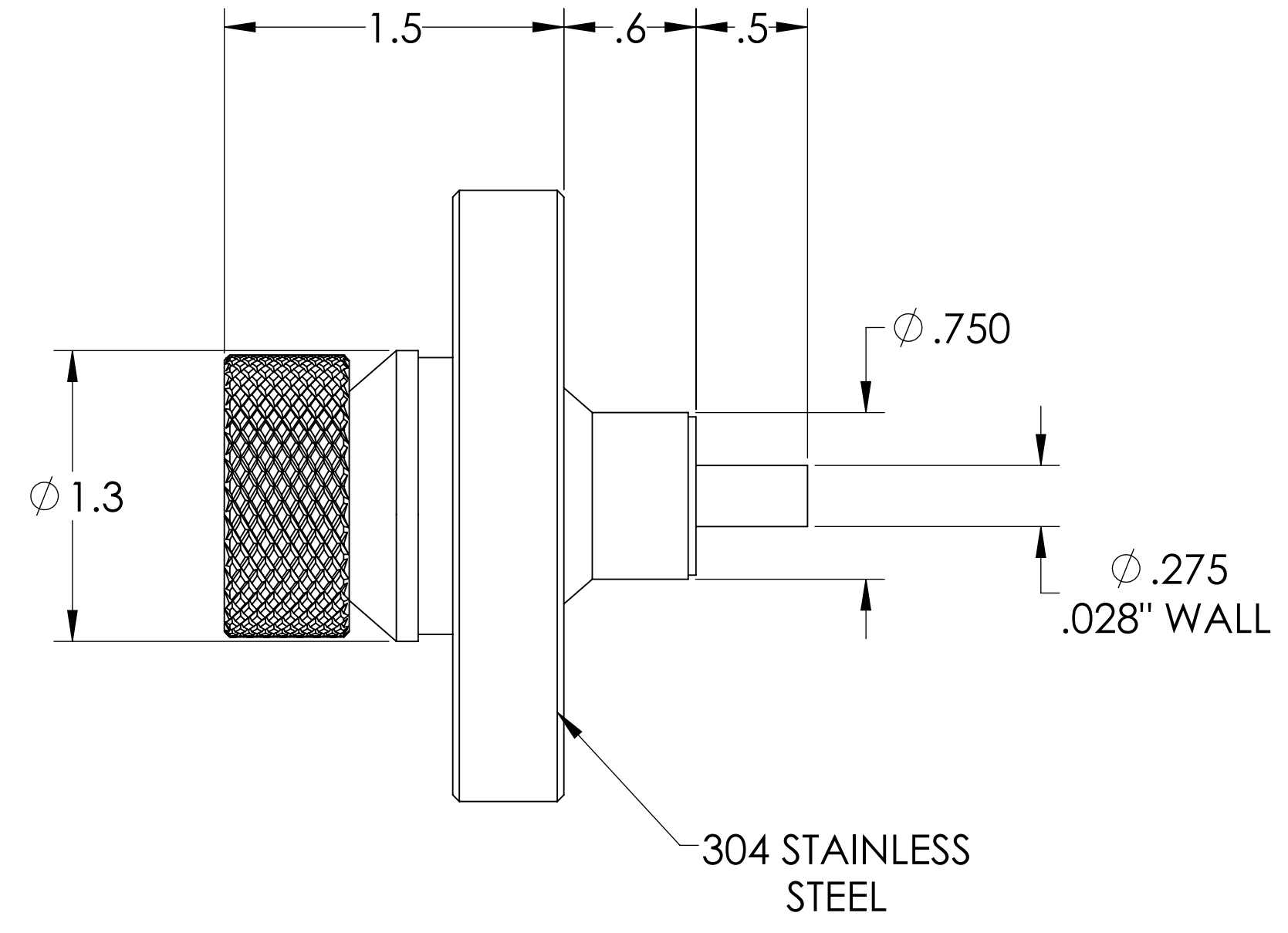
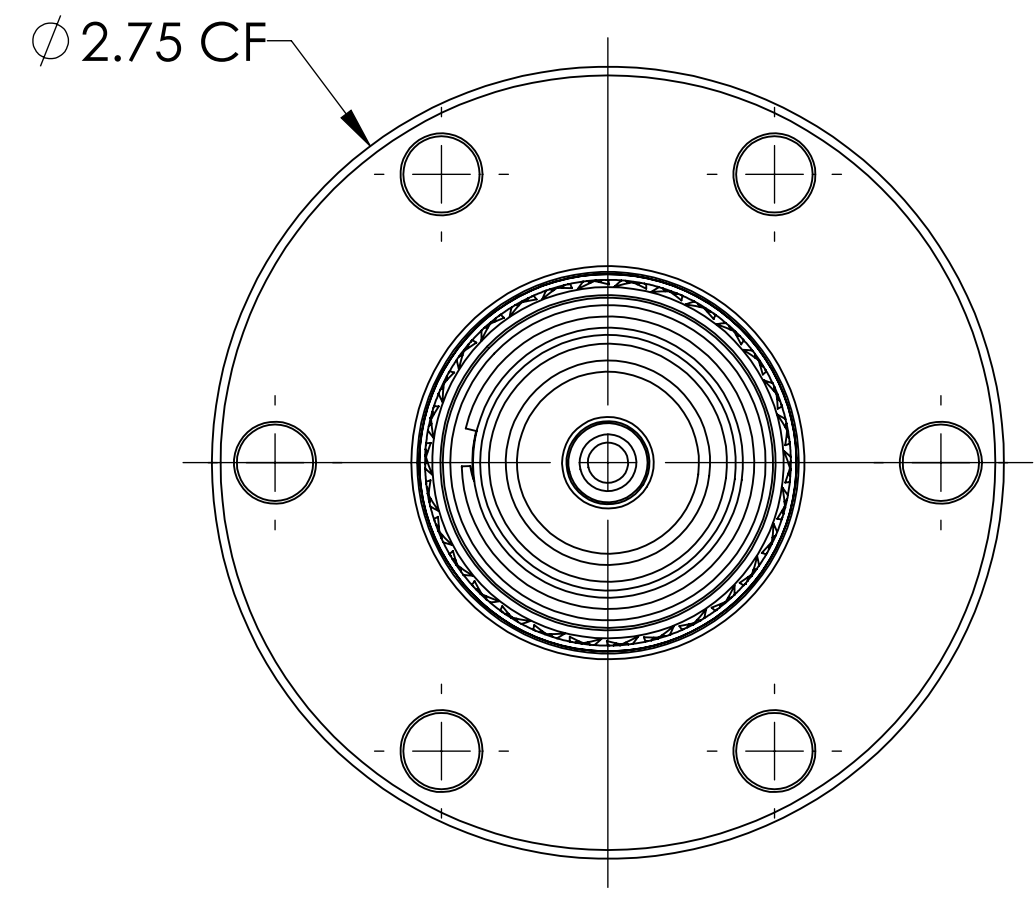
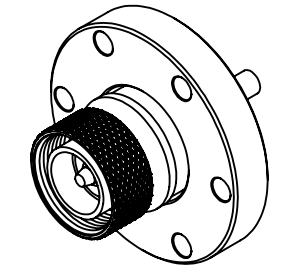


MPF PRODUCTS INC.



- NOTE:
1. VOLTAGE: 2700 VRMS
 2. CURRENT: N/A
 3. TEMPERATURE RATING: -100 TO 450°C

RF Power Feedthrough, 50ohm Impedance, 2700 VRMS, 100 Watts DC to 7.5 GHz, 1 Pin, 0.275" Copper Conductor 7/16" Nut, 2.75" Conflat Flange

UNLESS OTHERWISE SPECIFIED:		QUOTATION #		N/A	
DIMENSIONS ARE IN INCHES TOLERANCES:		NAME	DATE	MPF PRODUCTS INC.	
ANGULAR: MACH ± 1/2°		DRAWN	9/11/2015		
TWO PLACE DECIMAL ± .030		CHECKED	9/11/2015		
THREE PLACE DECIMAL ± .015		ENG APPR.	9/11/2015		
MATERIAL		THIRD ANGLE:		RF POWER FEEDTHROUGH, 2700 VRMS, 100 WATTS, 1 PIN, 2.75" CONFLAT FLANGE	
FINISH		APPLICATION			
PLATING		NEXT ASSY	USED ON		
		SURFACE FINISH: 63 OR BETTER			
		UNLESS OTHERWISE SPECIFIED:		DOWNLOADED FROM MPFPI.COM	
		ALL DIAMETERS CONCENTRIC WITHIN .005. REMOVE ALL BURRS AND SHARP EDGES		DWG. NO.	REV.
				A10021-1-CF	
				Thursday, December 13, 2018 11:23:04 AM	