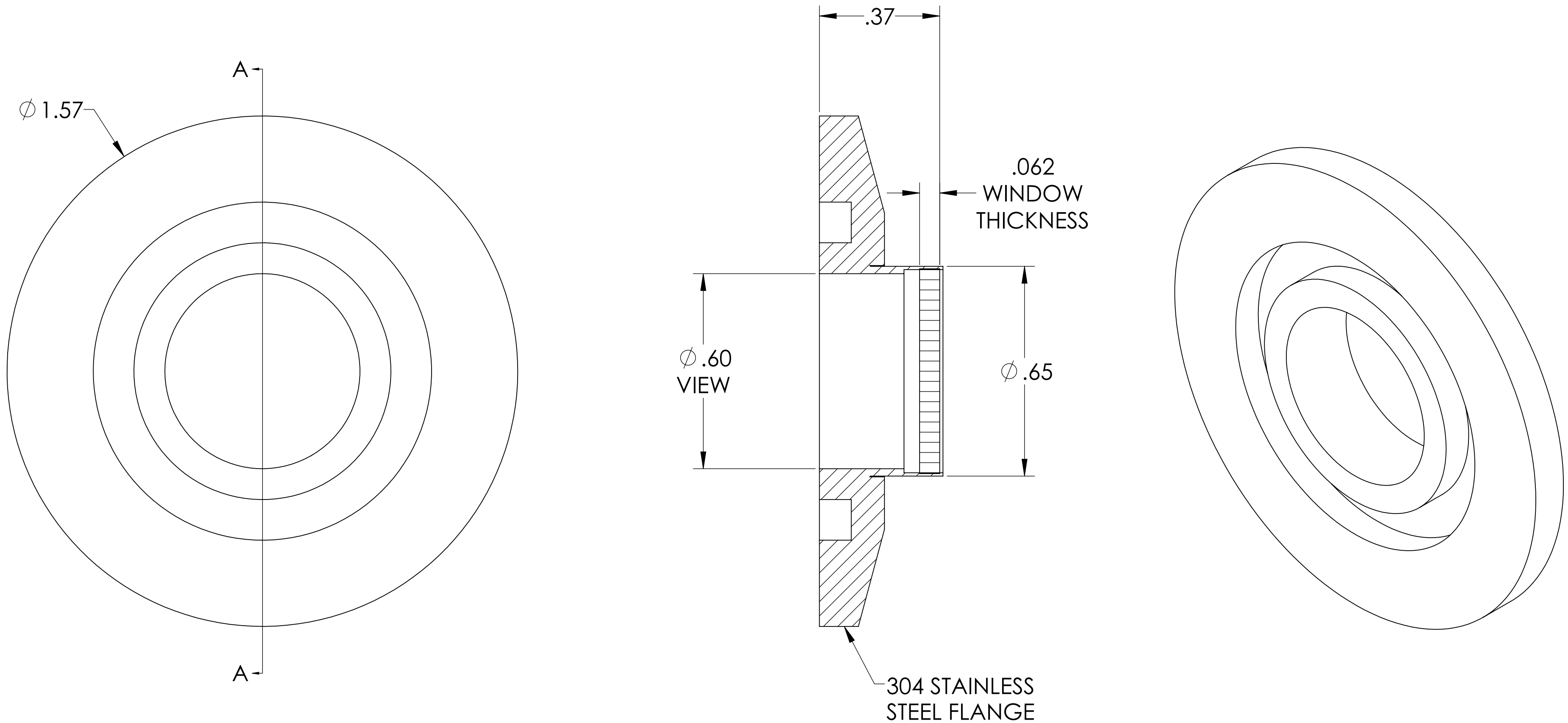


MPF PRODUCTS INC.



SPECIFICATIONS:

1. MATERIAL: SAPPHIRE
2. TWD <math>< 8\lambda @ 632\text{nm}</math> (PEAK TO VALLEY)
3. PARALLELISM <math>< 3</math> ARC-MINUTES
4. SURFACE FINISH: 50-20 SCRATCH-DIG
5. THERMAL RANGE: -100 °C TO 450 °C
6. ORIENTATION: RANDOM
7. LEAK RATE <math>< 1 \times 10^{-9}</math> ATM CC/SEC HE

UV Grade Sapphire Viewport, 0.60" View Dia, 1.57" QF/KF

| | | | | | |
|---|--|--|---------|--|-----------|
| UNLESS OTHERWISE SPECIFIED: | | QUOTATION # | | N/A | |
| DIMENSIONS ARE IN INCHES TOLERANCES: | | DRAWN | WJ | DATE | 9/11/2015 |
| ANGULAR: MACH $\pm 1/2^\circ$ | | CHECKED | | DATE | 9/11/2015 |
| TWO PLACE DECIMAL $\pm .030$ | | ENG APPR. | WJ | DATE | 9/11/2015 |
| THREE PLACE DECIMAL $\pm .015$ | | THIRD ANGLE: | | | |
| MATERIAL | | | | | |
| FINISH | | SURFACE FINISH: $\sqrt{63}$ OR BETTER | | | |
| PLATING | | UNLESS OTHERWISE SPECIFIED: ALL DIAMETERS CONCENTRIC WITHIN .005. REMOVE ALL BURRS AND SHARP EDGES | | | |
| | | APPLICATION | | TITLE: | |
| | | NEXT ASSY | USED ON | VIEWPORT, SAPPHIRE, UV, 0.6" VIEW, QF/KF 25 | |
| | | | | DOWNLOADED FROM MPFPI.COM | |
| | | | | DWG. NO. | REV |
| | | | | A10076-1-QF | |
| | | | | Friday, January 25, 2019 6:42:10 AM | |