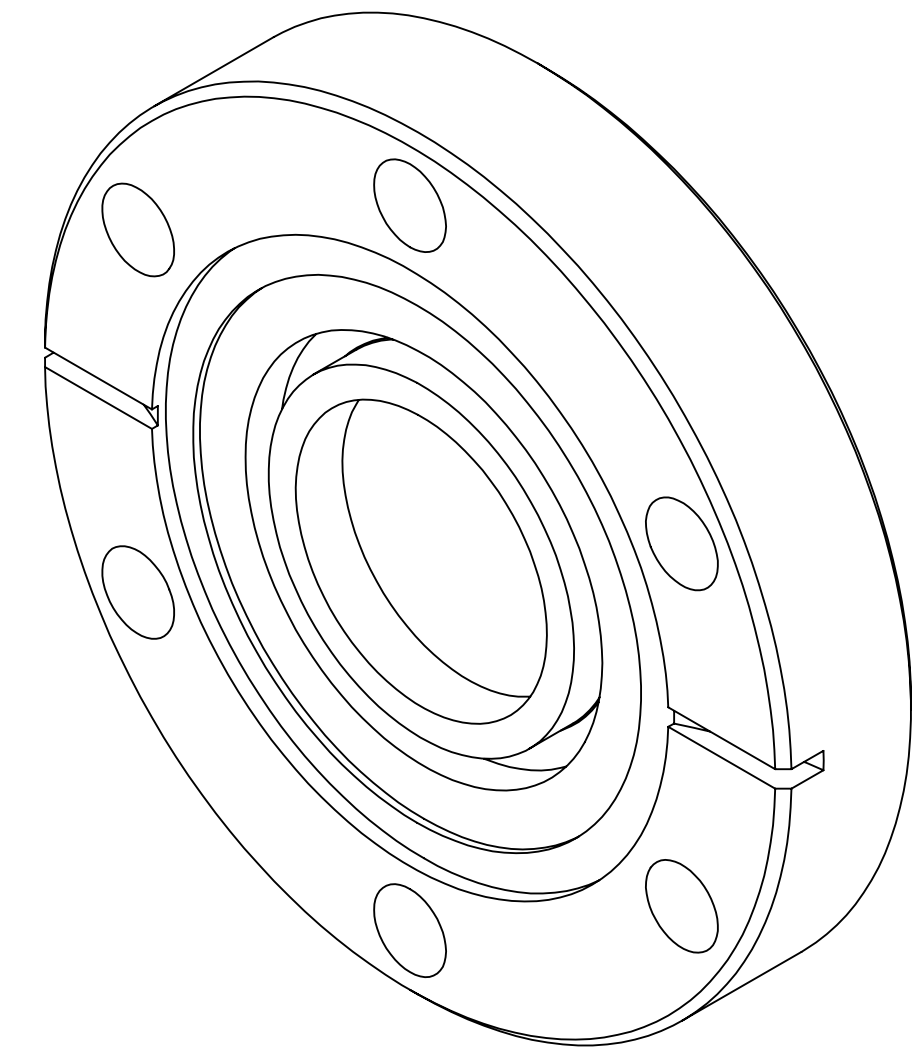
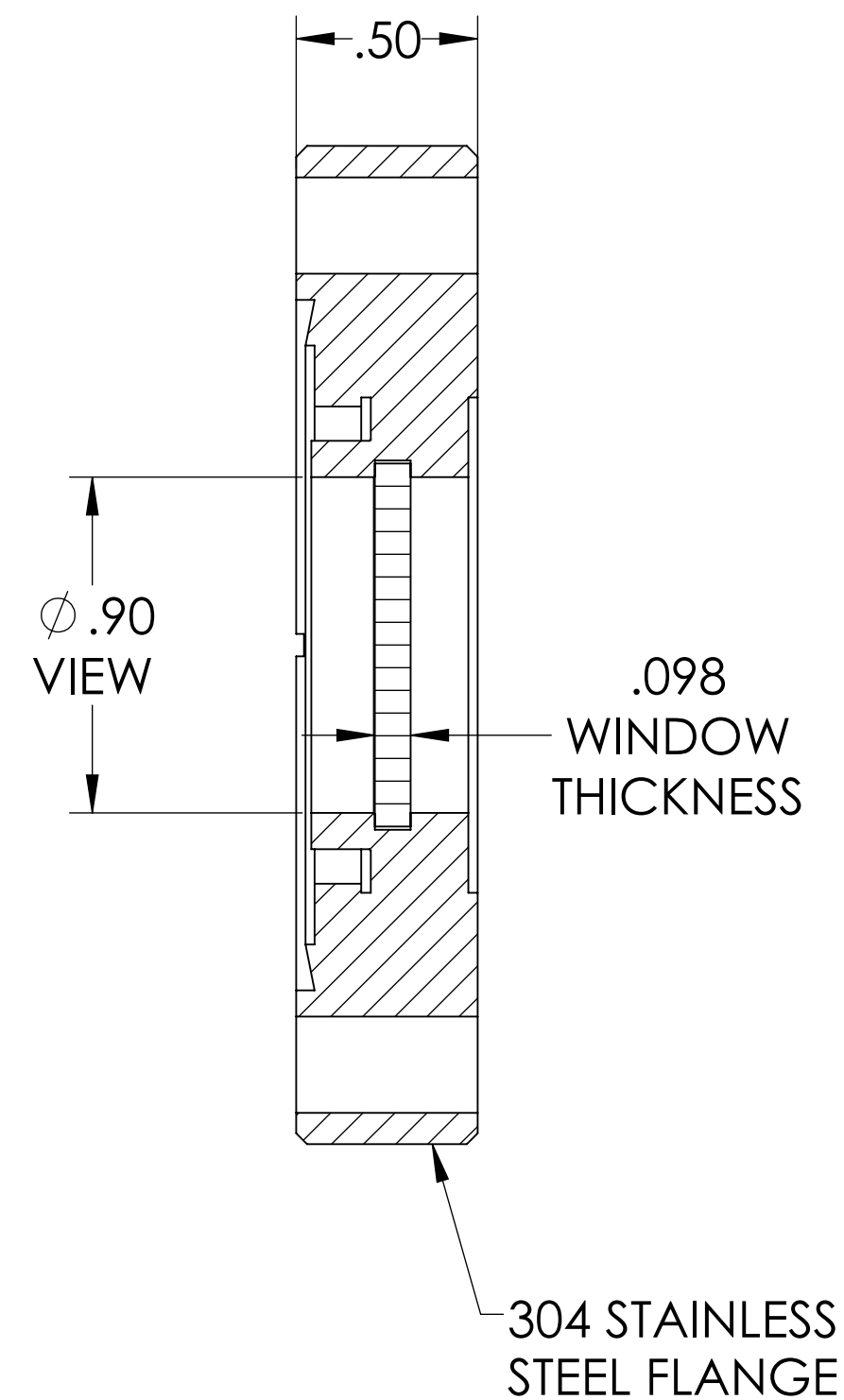
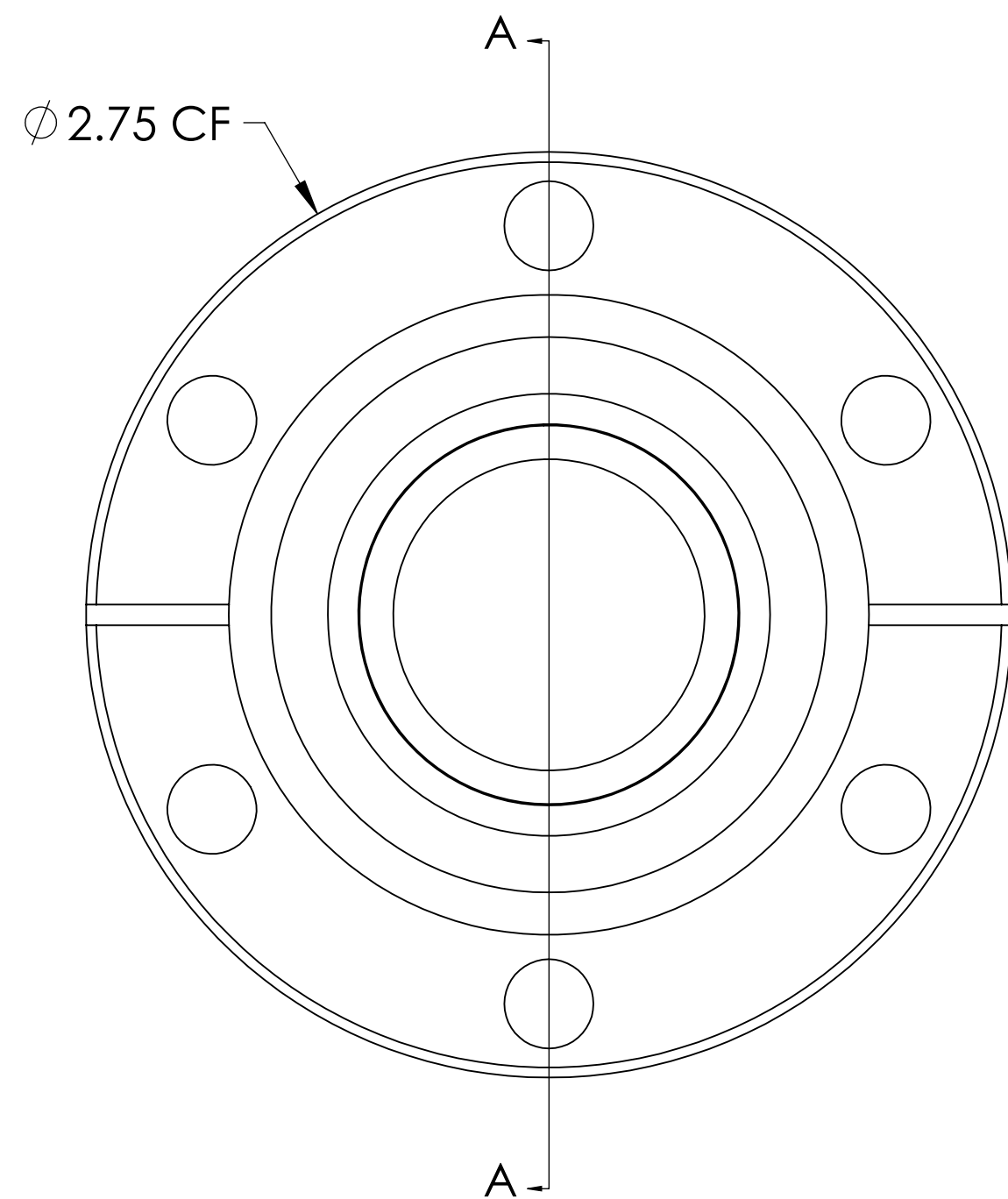


MPF PRODUCTS INC.



SPECIFICATIONS:

1. MATERIAL: EXCIMER GRADE SINGLE CRYSTAL, 0° CALCIUM FLUORIDE 157 GRADE
2. FLATNESS <math>< \lambda/2 @ 632\text{NM}</math> (PEAK TO VALLEY)
3. PARALLELISM <math>< 3</math> ARC MINUTES
4. SURFACE FINISH: 20/10 SCRATCH-DIG
5. THERMAL RANGE: -100°C TO 200°C
6. LEAK RATE <math>< 1 \times 10^{-9}</math> ATM/CC SEC HE

157 Grade Calcium Fluoride (CaF₂) Viewport, UHV Rated Vacuum-Optics, 0.90 View Dia, 2.75 Conflat Flange

UNLESS OTHERWISE SPECIFIED:	QUOTATION #	N/A					
DIMENSIONS ARE IN INCHES TOLERANCES:	DRAWN	NAME	DATE				
ANGULAR: MACH ± 1/2°	WJ	WJ	9/11/2015				
TWO PLACE DECIMAL ± .030	CHECKED		9/11/2015				
THREE PLACE DECIMAL ± .015	ENG APPR.	WJ	9/11/2015				
MATERIAL	THIRD ANGLE:						
FINISH	APPLICATION	<table border="1"> <tr> <td>NEXT ASSY</td> <td>USED ON</td> </tr> <tr> <td></td> <td></td> </tr> </table>		NEXT ASSY	USED ON		
NEXT ASSY	USED ON						
PLATING	SURFACE FINISH:	63/ OR BETTER					
	UNLESS OTHERWISE SPECIFIED:	ALL DIAMETERS CONCENTRIC WITHIN .005. REMOVE ALL BURRS AND SHARP EDGES					
	TITLE:	VIEWPORT, 157 CAF2 VACUUM OPTICS, 1" VIEW, 275CF					
	DOWNLOADED FROM MPFPI.COM						
	DWG. NO.	A10174-1-CF					
	REV						
	Thursday, July 11, 2019 11:44:45 AM						