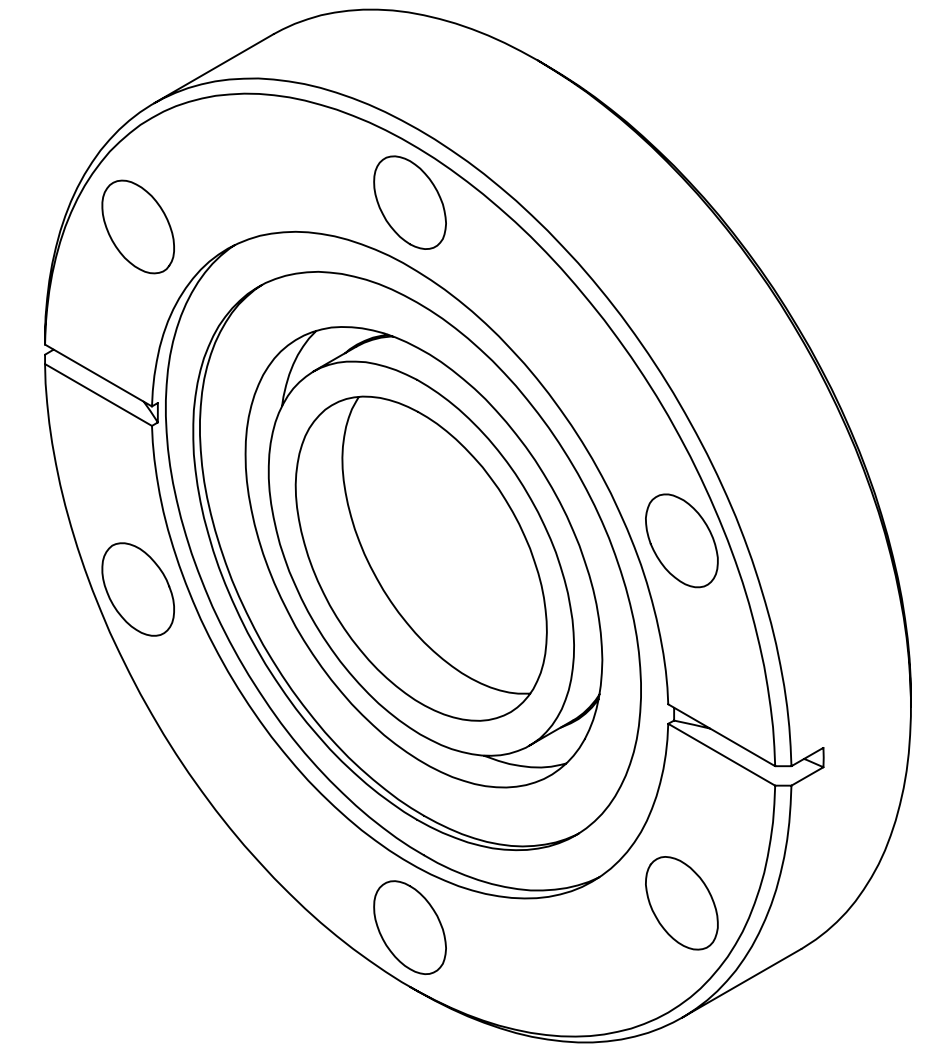
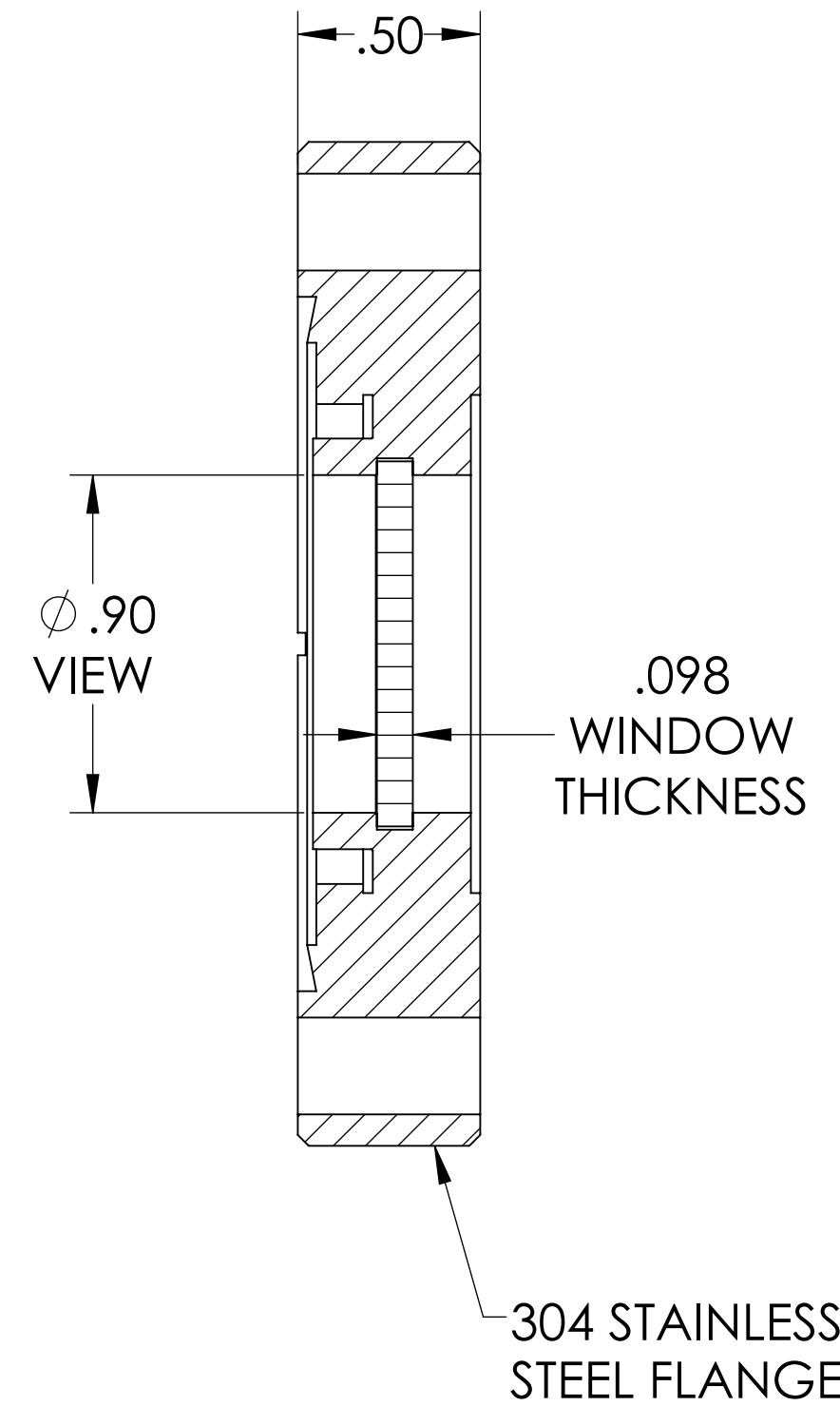
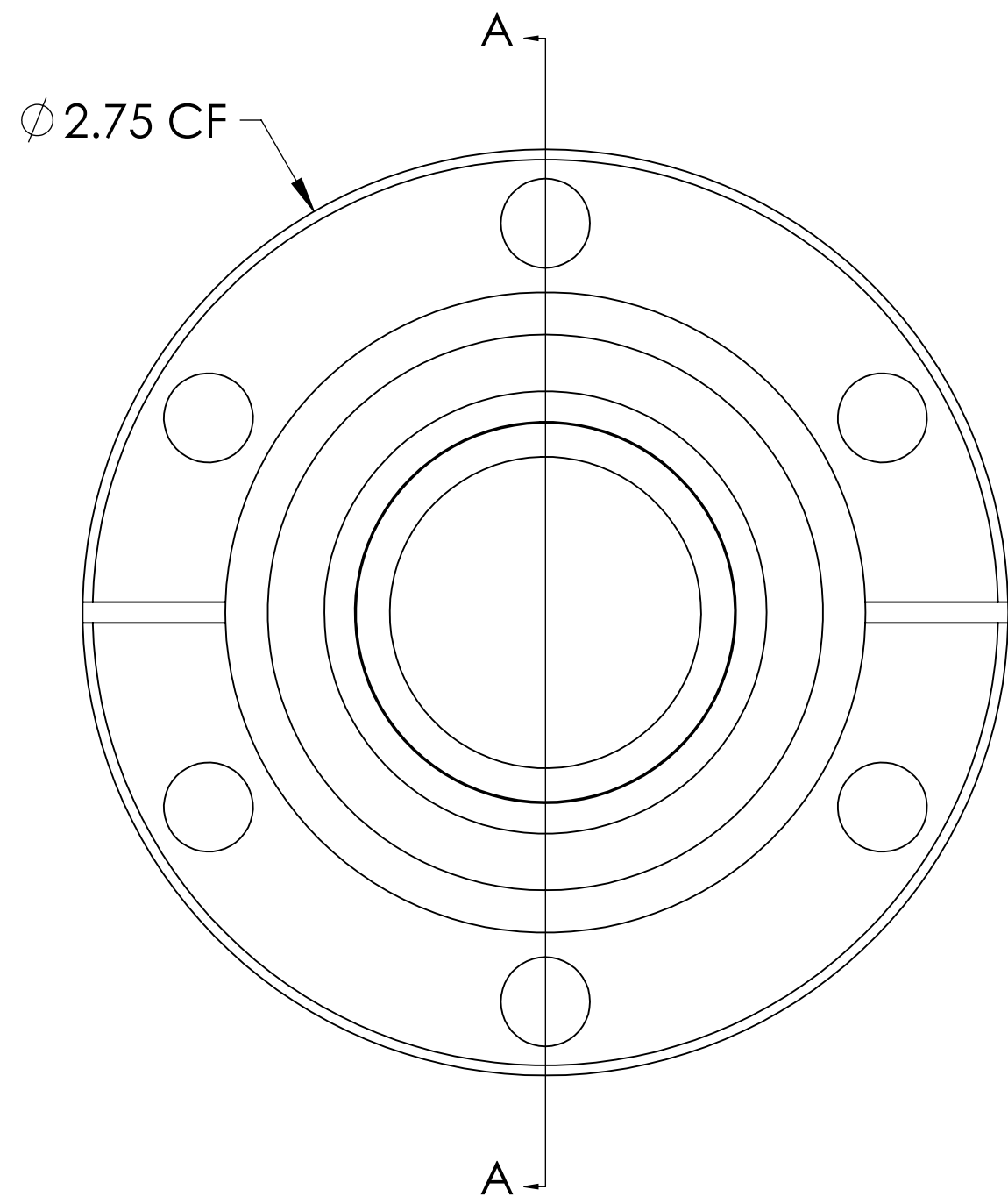


MPF PRODUCTS INC.



SPECIFICATIONS:

1. MATERIAL: EXCIMER GRADE SINGLE CRYSTAL, 0° MAGNESIUM FLUORIDE 157 GRADE
2. FLATNESS <math>< \lambda/2</math> @ 632NM (PEAK TO VALLEY)
3. PARALLELISM <math>< 3</math> ARC MINUTES
4. SURFACE FINISH: 20/10 SCRATCH-DIG
5. THERMAL RANGE: -100°C TO 200°C
6. LEAK RATE <math>< 1 \times 10^{-9}</math> ATM/CC SEC HE

157 Grade Magnesium Fluoride (MgF2) Viewport, UHV Rated Vacuum-Optics, 0.90 View Dia, 2.75 Conflat Flange

UNLESS OTHERWISE SPECIFIED:		QUOTATION #		N/A	
DIMENSIONS ARE IN INCHES		DRAWN	NAME	DATE	MPF PRODUCTS INC.
TOLERANCES:		WJ	WJ	9/11/2015	
ANGULAR: MACH ± 1/2°		CHECKED	WJ	9/11/2015	
TWO PLACE DECIMAL ± .030		ENG APPR.	WJ	9/11/2015	
THREE PLACE DECIMAL ± .015		THIRD ANGLE:			VIEWPORT, 157 MGF2 VACUUM OPTICS, 1" VIEW, 275CF
MATERIAL		APPLICATION			
		NEXT ASSY	USED ON		
FINISH		SURFACE FINISH: 63 OR BETTER			DOWNLOADED FROM MPFPI.COM
PLATING		UNLESS OTHERWISE SPECIFIED:			DWG. NO. A10174-2-CF
		ALL DIAMETERS CONCENTRIC WITHIN .005. REMOVE ALL BURRS AND SHARP EDGES			REV.
		Thursday, July 11, 2019 11:40:52 AM			