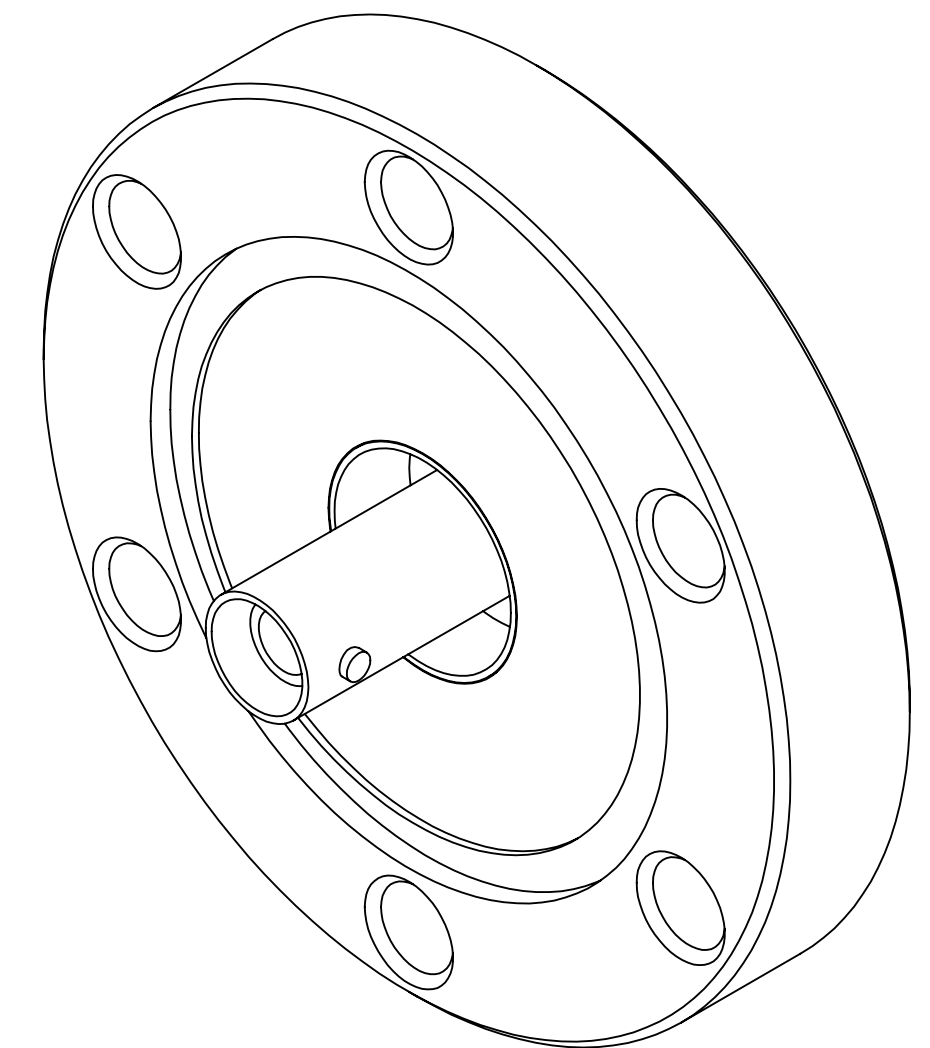
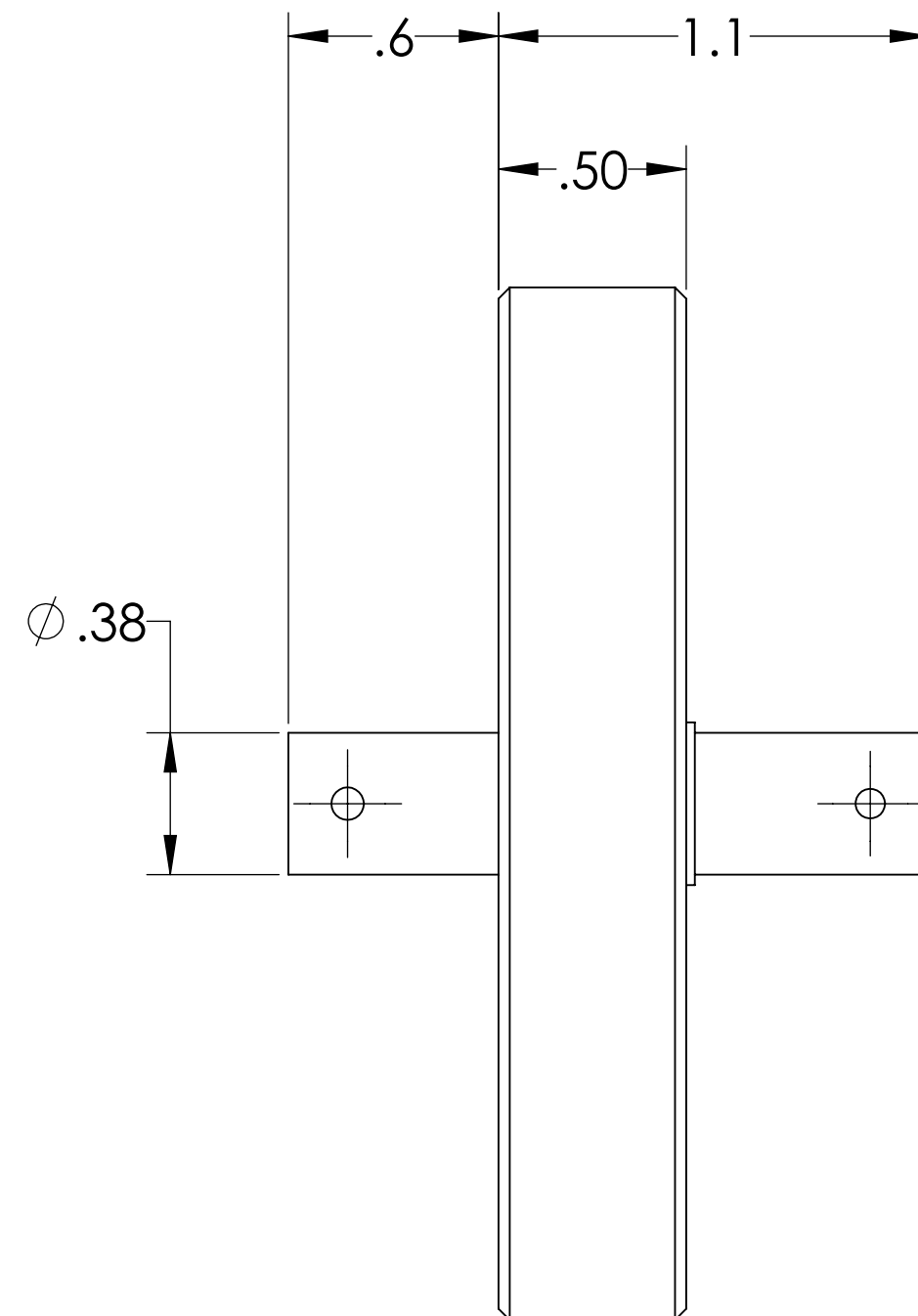
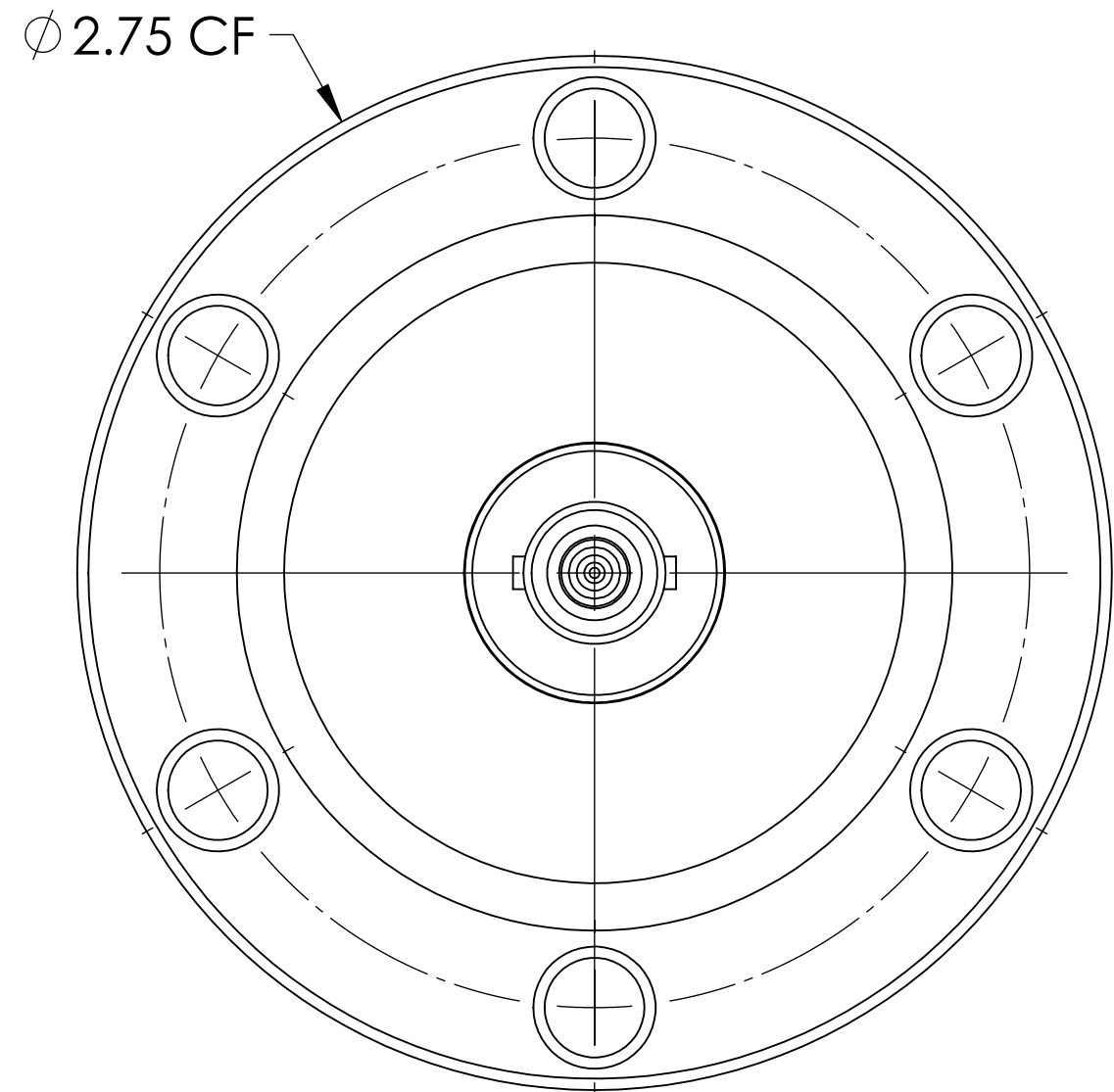


MPF PRODUCTS INC.



NOTE:

1. SHIELD: GROUNDING
2. VOLTAGE: 6000 VOLTS DC
3. CURRENT: 5 AMPS
4. TEMPERATURE RATING: -200 TO 450°C (FEEDTHROUGH), 65 TO 165°C (AIRSIDE CONNECTOR)
5. IMPEDANCE: 50 OHM

SHV Coaxial Feedthrough, 1 Pin, Grounded Shield, 50 Ohm, Double Ended, 2.75" Conflat Flange, UHV Compatible

UNLESS OTHERWISE SPECIFIED:		QUOTATION #		N/A	
DIMENSIONS ARE IN INCHES TOLERANCES:		NAME	DATE	MPF PRODUCTS INC.	
ANGULAR: MACH ± 1/2°		DRAWN	9/11/2015		
TWO PLACE DECIMAL ± .030		CHECKED	9/11/2015		
THREE PLACE DECIMAL ± .015		ENG APPR.	9/11/2015		
MATERIAL		THIRD ANGLE:		TITLE: SHV COAXIAL FEEDTHROUGH, 1 PIN, GROUNDING SHIELD, 50 OHM, DOUBLE ENDED, 2.75" CONFLAT FLANGE	
APPLICATION					
NEXT ASSY		USED ON			
FINISH		SURFACE FINISH: 63 OR BETTER		DOWNLOADED FROM MPFPI.COM	
PLATING		UNLESS OTHERWISE SPECIFIED:		DWG. NO. A10959-1-CF	
		ALL DIAMETERS CONCENTRIC WITHIN .005. REMOVE ALL BURRS AND SHARP EDGES		REV.	
		Monday, April 8, 2019 8:48:12 AM			