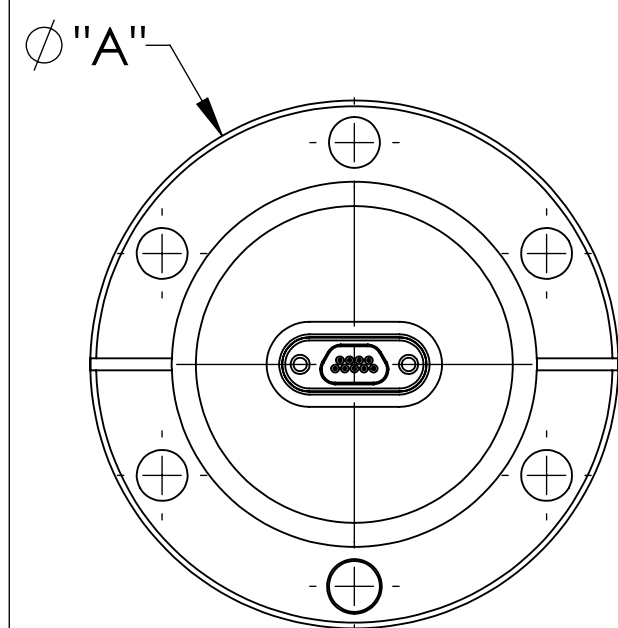
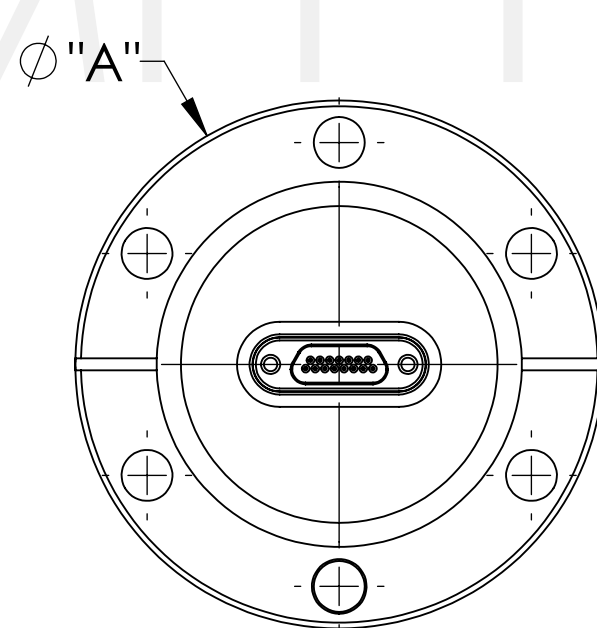


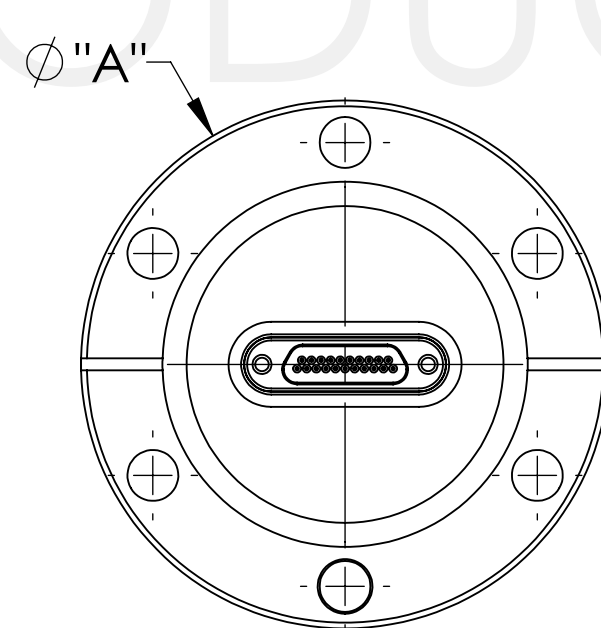
MPF PRODUCTS INC.



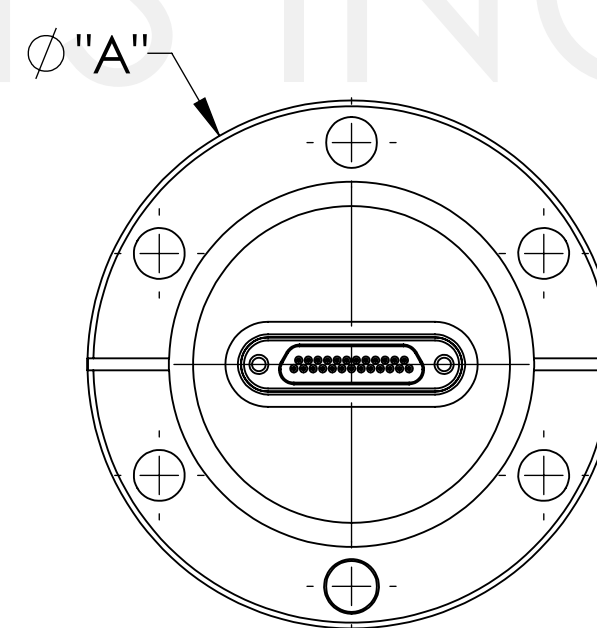
A11563-1-CF



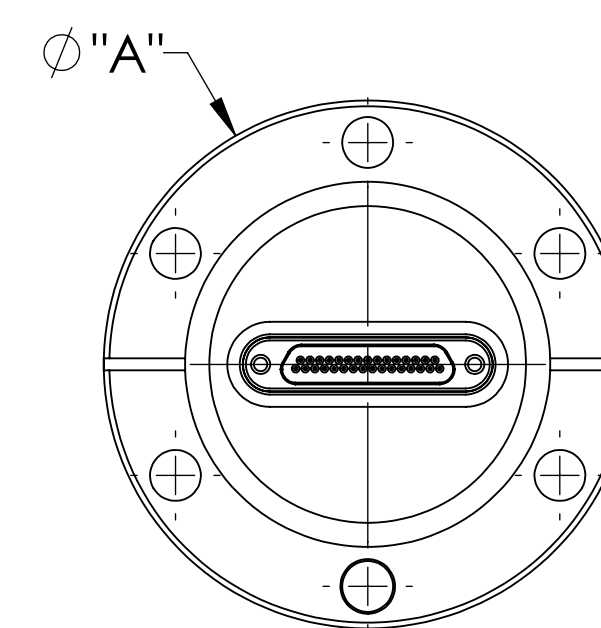
A11563-2-CF



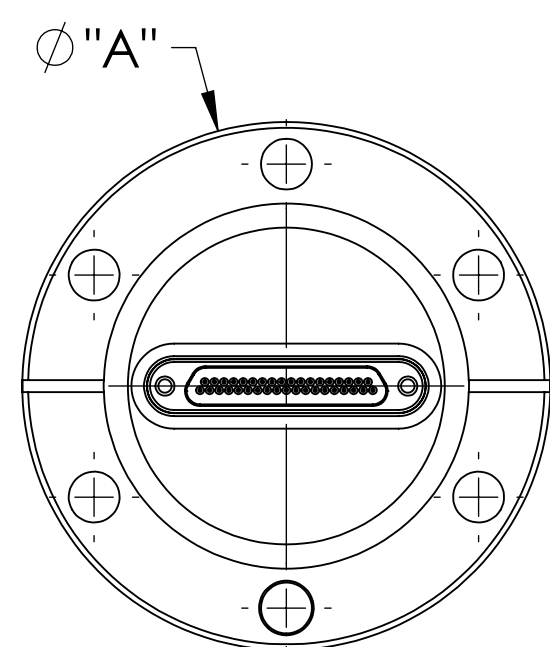
A11563-3-CF



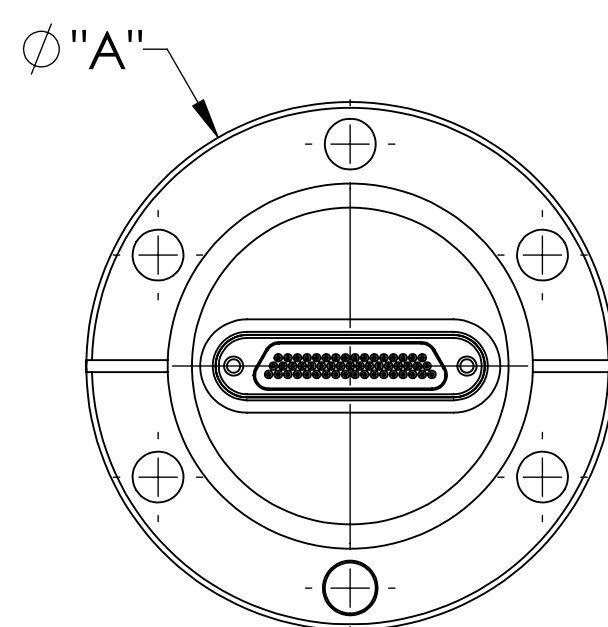
A11563-4-CF



A11563-5-CF

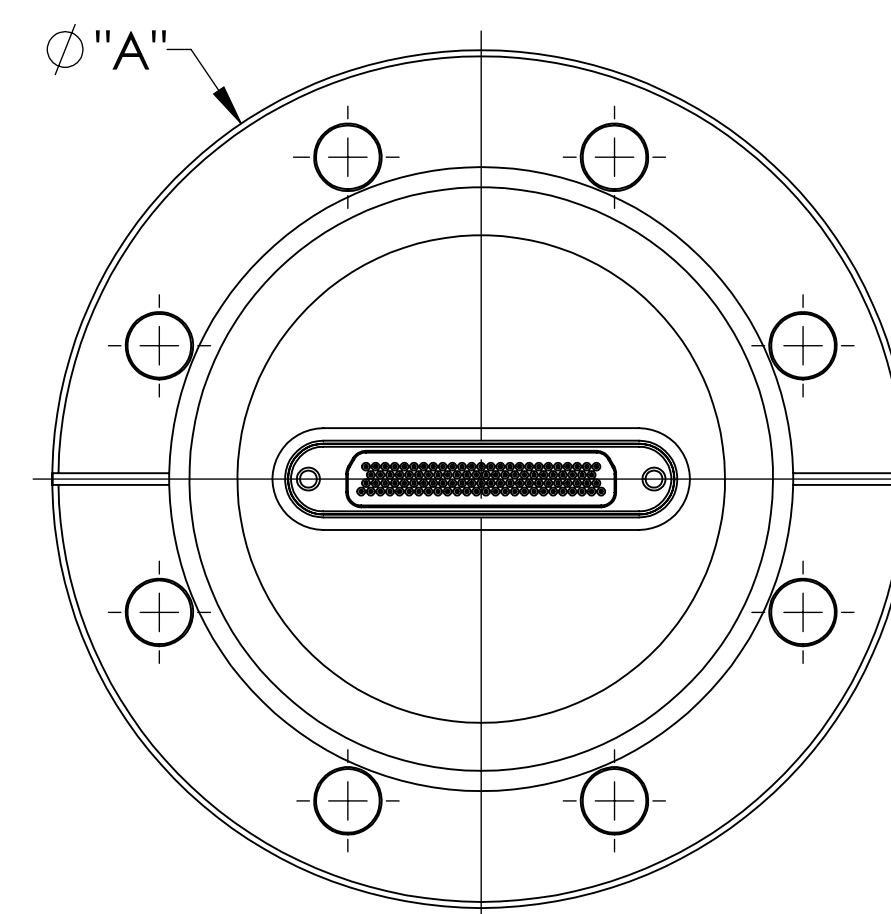


A11563-6-CF



A11563-7-CF

PART #	# OF PINS	"A" DIM
A11563-1-CF	9	2.75
A11563-2-CF	15	2.75
A11563-3-CF	21	2.75
A11563-4-CF	25	2.75
A11563-5-CF	31	2.75
A11563-6-CF	37	2.75
A11563-7-CF	51	2.75
A11563-8-CF	100	4.50



A11563-8-CF

- DOUBLE-ENDED (STANDARD FEMALE RECEPTACLE) CONFIGURATION WITH THE WELD INTERFACE AT THE TOP
- DESIGNED TO LASER WELD INTO AN ELECTRONIC CHASSIS WALL OR FLANGE
- AMBIENT INTERFACE CONFORMS TO MIL-DTL-83513/2
- VACUUM INTERFACE MATES WITH MPF NONHERMETIC A9601 SERIES CONNECTOR/CABLE ASSEMBLY ONLY

- MATERIALS:  
 CONTACTS: BERYLLIUM-COPPER ALLOY 172/173 IN ACCORDANCE WITH ASTM B196/197.  
 DIELECTRIC: PROPRIETARY CERAMIC.  
 SHELL: STAINLESS STEEL ALLOY 304L IN ACCORDANCE WITH SAE AMS-QQ-S-763.  
 INTERFACIAL SEAL: FLUOROSILICONE RUBBER, CLASS 1, TYPE 2, GRADE 40 TO 60 IN ACCORDANCE WITH MID-R-25988

- FINISH:  
 CONTACTS: NICKEL PLATE PER QQ-N-290, .000100/ .000250 THICK.  
 GOLD PLATE PER ASTM B488-11, TYPE III, CODE A, .000050/ .000100 THICK.

SPECIFICATIONS:

- VOLTAGE: 300 VOLTS DC
- CURRENT: 3 AMPS PER PIN
- TEMPERATURE RATING: -50 TO 200°C WITHOUT CONNECTOR
- LEAK RATE < 1X10-9 ATM CC/SEC HE

Micro-D type Multipin Feedthrough, 300 Volts, 3 Amps per pin, Conflat Flange

UNLESS OTHERWISE SPECIFIED:	QUOTATION #	N/A	
DIMENSIONS ARE IN INCHES TOLERANCES:	DRAWN	NAME	DATE
ANGULAR: MACH ± 1/2°	WJ	WJ	9/11/2015
TWO PLACE DECIMAL ± .030	CHECKED		9/11/2015
THREE PLACE DECIMAL ± .015	ENG APPR.	WJ	9/11/2015
MATERIAL	THIRD ANGLE:		
FINISH	APPLICATION		
PLATING	NEXT ASSY USED ON		
	SURFACE FINISH: 63 OR BETTER		
	UNLESS OTHERWISE SPECIFIED:		
	ALL DIAMETERS CONCENTRIC WITHIN .005. REMOVE ALL BURRS AND SHARP EDGES		
	TITLE:		REV
	MULTIPIN, MICRO-D, 300V, 3A, CONFLAT FLANGE		
	DOWNLOADED FROM MPFPI.COM		
	DWG. NO. A11563		
	Thursday, July 29, 2021 1:24:44 PM		