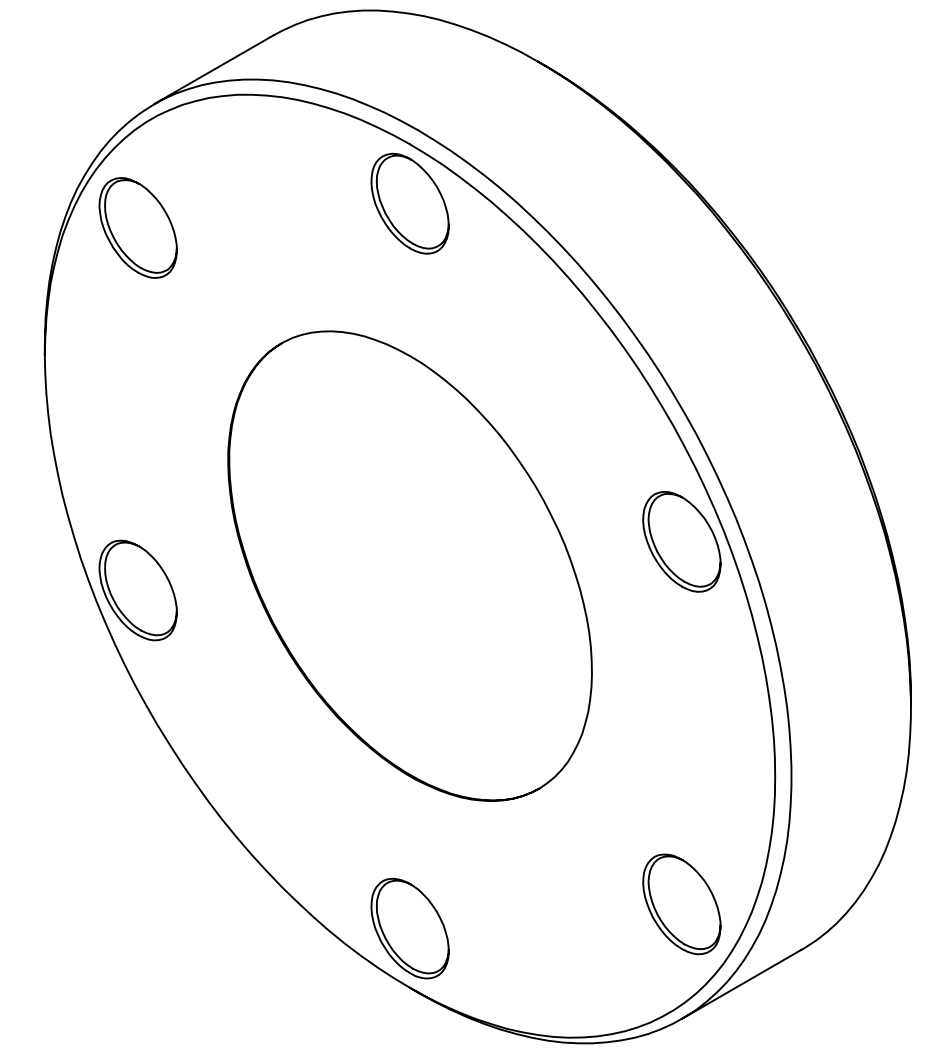
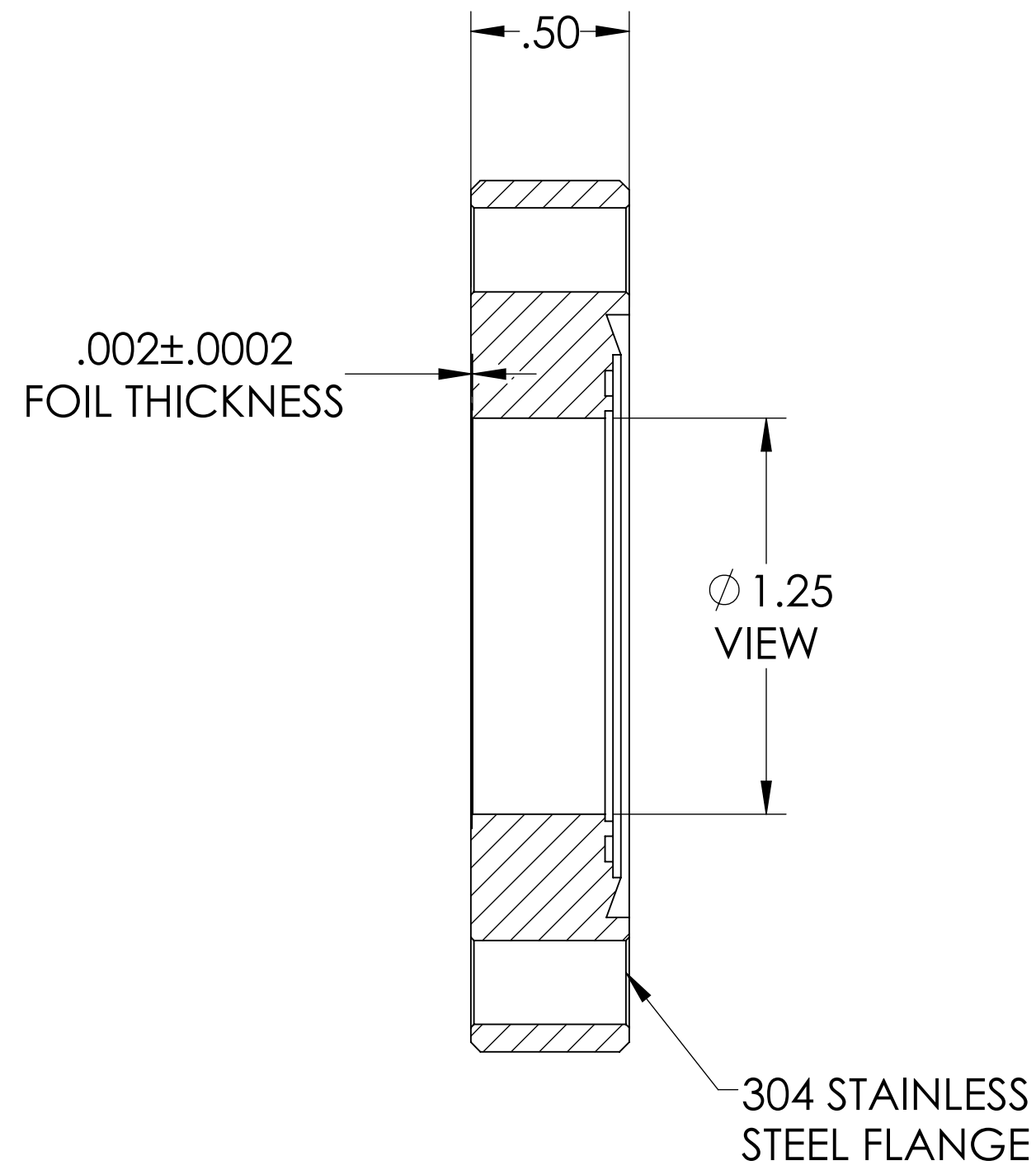
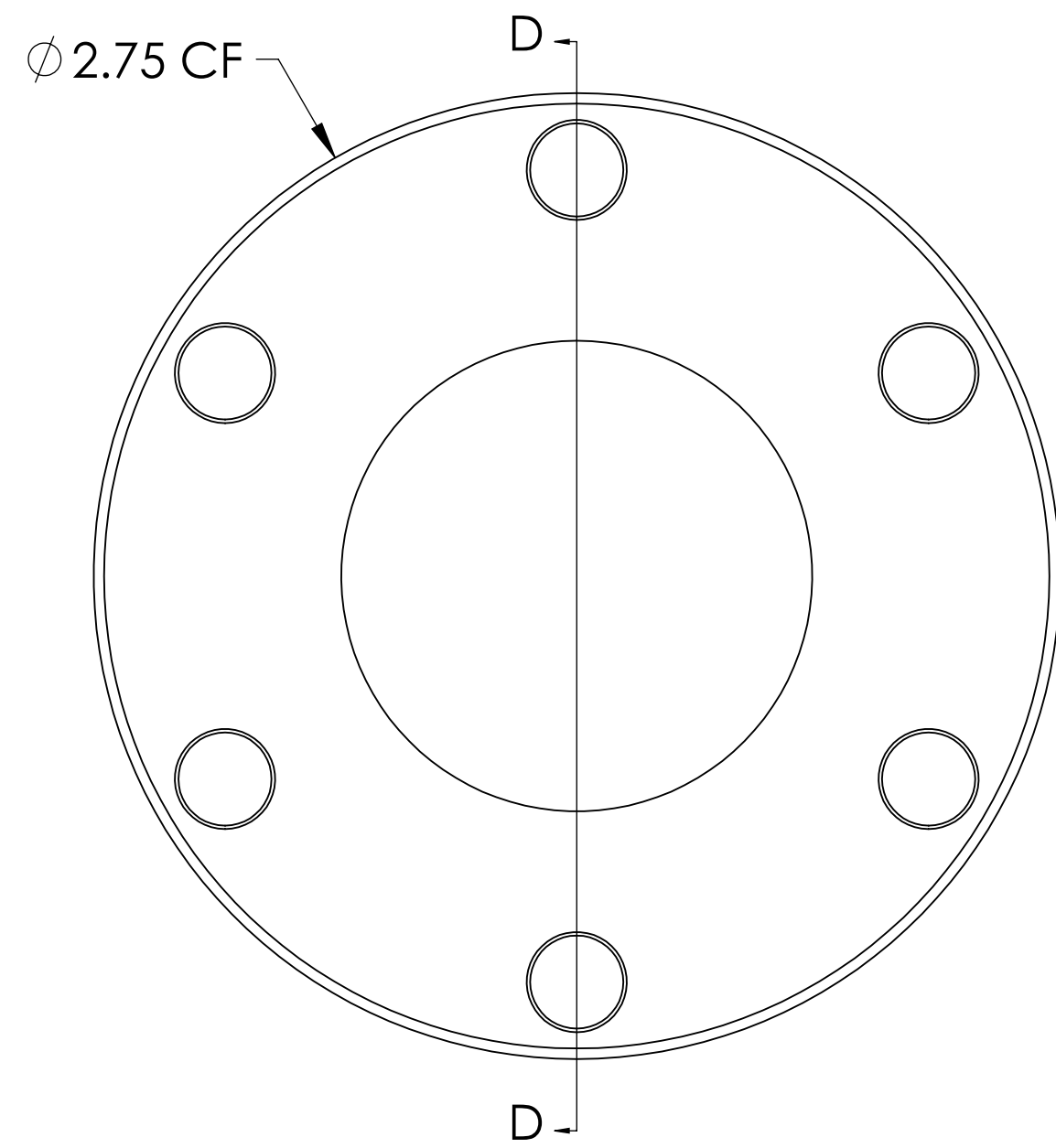


# MPF PRODUCTS INC.



**SPECIFICATIONS:**

1. MATERIAL: CP TITANIUM GRADE 4
2. SURFACE FINISH: Rz 1.6 MIN (BY VISUAL INSPECTION)
3. THERMAL RANGE: -100°C TO 450°C
4. LEAK RATE <math>< 1 \times 10^{-9}</math> ATM/CC SEC HE

Titanium Window Viewport, CP Grade 4 Titanium Foil, Zero Length Profile, 1.25" View Dia, 2.75" Conflat Flange

UNLESS OTHERWISE SPECIFIED:		QUOTATION #		N/A	
DIMENSIONS ARE IN INCHES		NAME	DATE	MPF PRODUCTS INC.	
TOLERANCES:		WJ	9/11/2015		
ANGULAR: MACH $\pm 1/2^\circ$		CHECKED	9/11/2015		
TWO PLACE DECIMAL $\pm .030$		ENG APPR.	WJ 9/11/2015		
THREE PLACE DECIMAL $\pm .015$		THIRD ANGLE:		VIEWPORT, TITANIUM FOIL, 1.25" VIEW, 275 CF FLANGE	
MATERIAL					
FINISH		APPLICATION			
PLATING		NEXT ASSY	USED ON		
SURFACE FINISH: $\sqrt{63}$ OR BETTER		SURFACE FINISH: $\sqrt{63}$ OR BETTER		DOWNLOADED FROM MPFPI.COM	
UNLESS OTHERWISE SPECIFIED:		UNLESS OTHERWISE SPECIFIED:		DWG. NO. A12311-1-CF	
ALL DIAMETERS CONCENTRIC WITHIN .005.		REMOVE ALL BURRS AND SHARP EDGES		REV	
		Friday, June 26, 2020 11:46:23 AM			