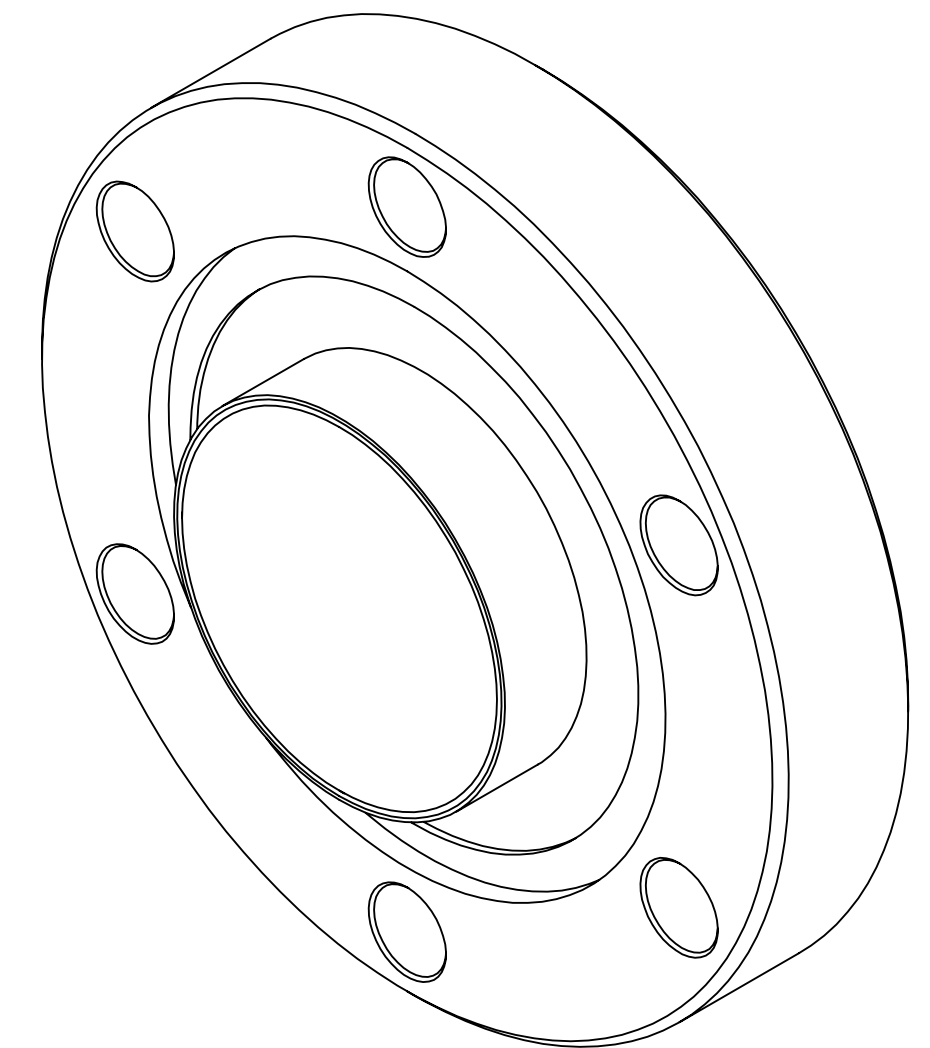
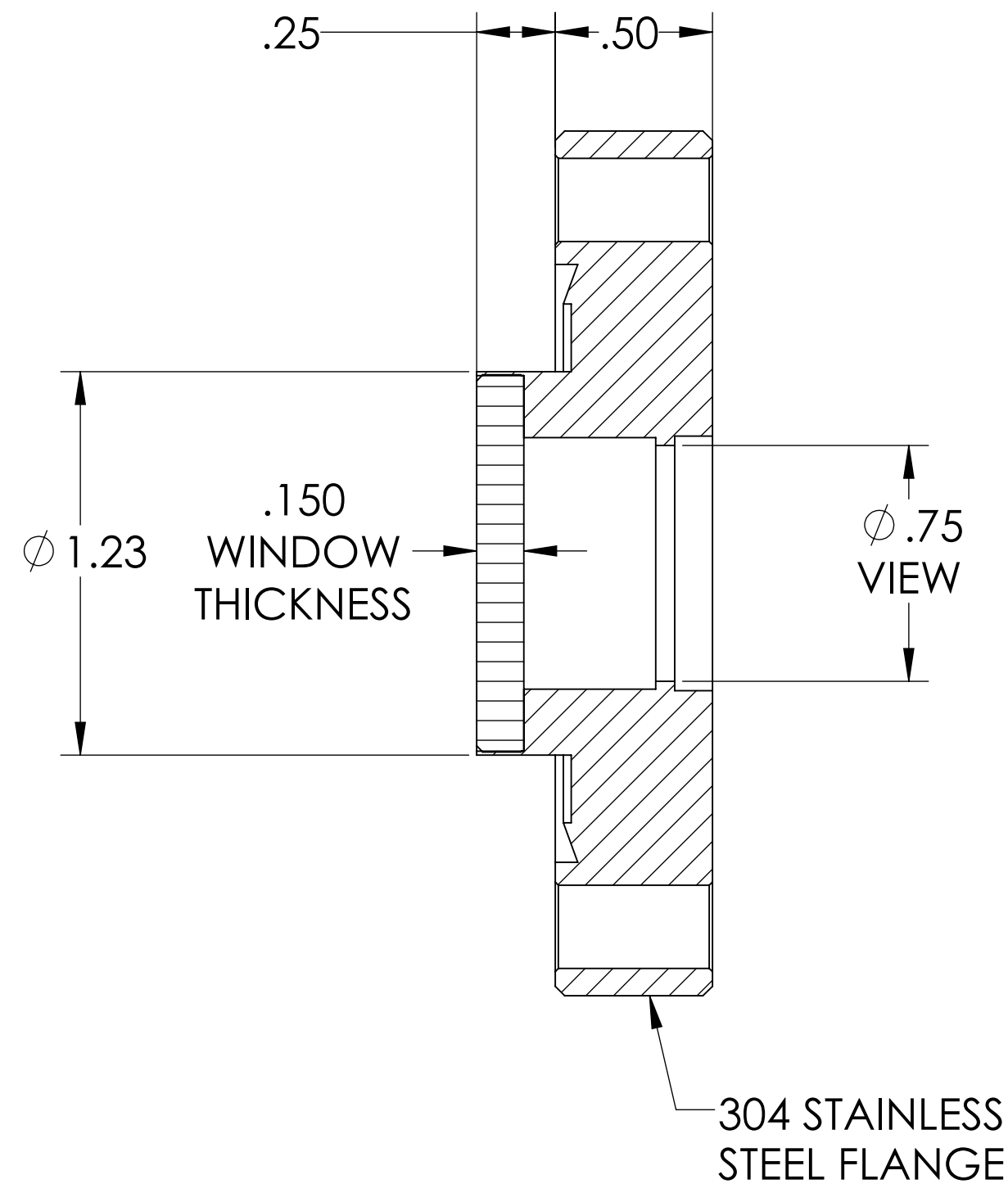
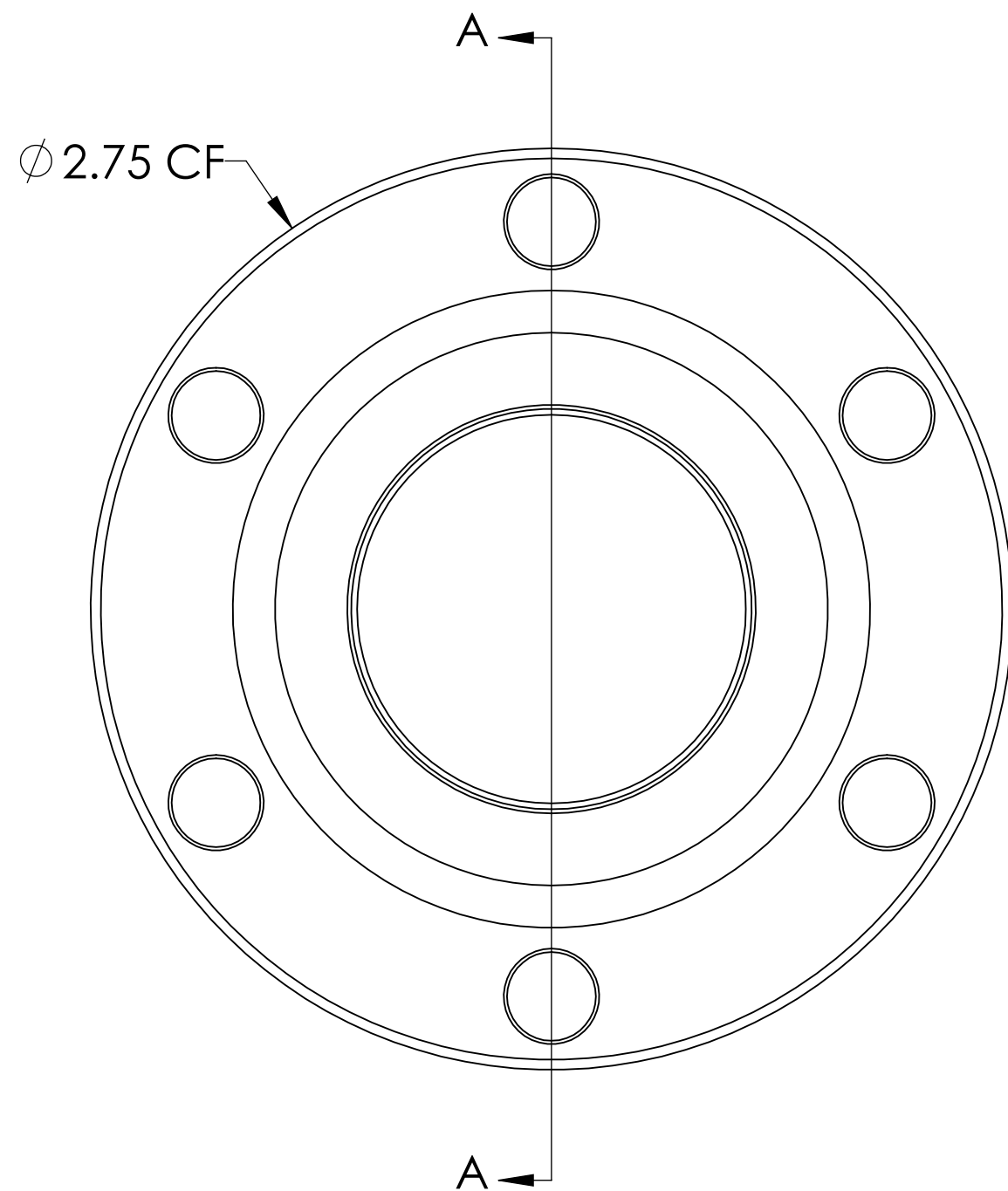


MPF PRODUCTS INC.

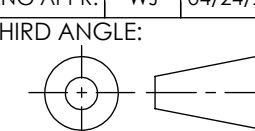
DIRECTION OF PRESSURE 



SPECIFICATIONS:

1. MATERIAL: SAPPHIRE
2. TWD <math>< 8\lambda</math> @ 632nm (PEAK TO VALLEY)
3. PARALLELISM <math>< 3</math> ARC-MINUTES
4. SURFACE FINISH: 50-20 SCRATCH-DIG
5. THERMAL RANGE: -100°C TO 450°C
6. ORIENTATION: 0°
7. LEAK RATE <math>< 1 \times 10^{-9}</math> ATM CC/SEC HE

UV Grade Sapphire Viewport, .75 View Dia, Over-Pressure, 2.75" Conflat Flange

UNLESS OTHERWISE SPECIFIED:	QUOTATION #	N/A	APPROVED
DIMENSIONS ARE IN INCHES TOLERANCES:	DRAWN	WJ	04/24/2014
ANGULAR: MACH $\pm 1/2^\circ$	CHECKED	WJ	04/24/2014
TWO PLACE DECIMAL $\pm .030$	ENG APPR.	WJ	04/24/2014
THREE PLACE DECIMAL $\pm .015$	THIRD ANGLE:		
MATERIAL	APPLICATION		
SEE NOTES	NEXT ASSY	USED ON	TITLE: .75" VIEW, OVER PRESSURE, SAPPHIRE VIEWPORT DOWNLOADED FROM MPFPI.COM
FINISH	SURFACE FINISH:	63 OR BETTER	
PLATING	UNLESS OTHERWISE SPECIFIED:	DWG. NO. A12819-1-CF	
ALL DIAMETERS CONCENTRIC WITHIN .005. REMOVE ALL BURRS AND SHARP EDGES			REV Friday, January 25, 2019 4:19:14 PM