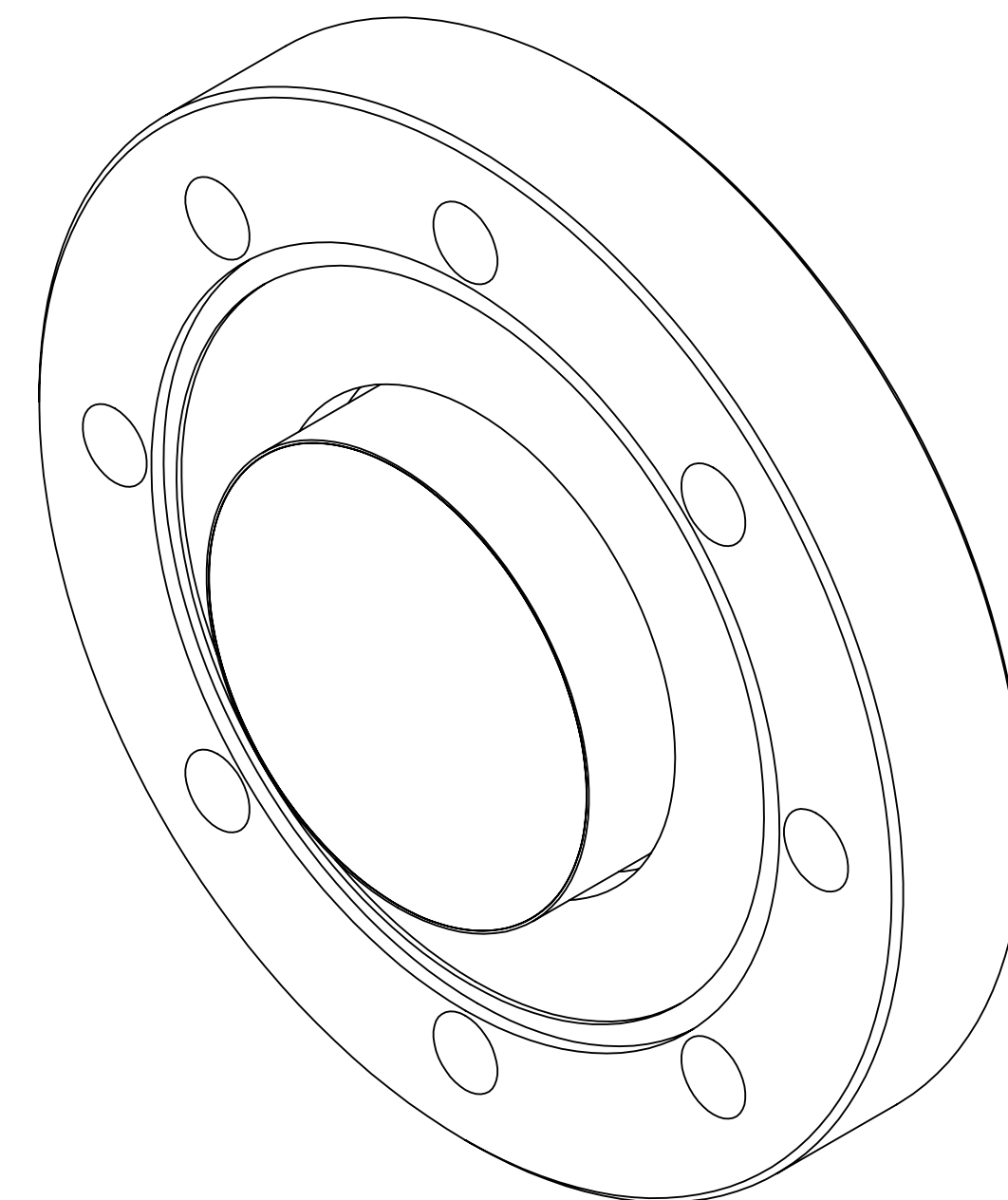
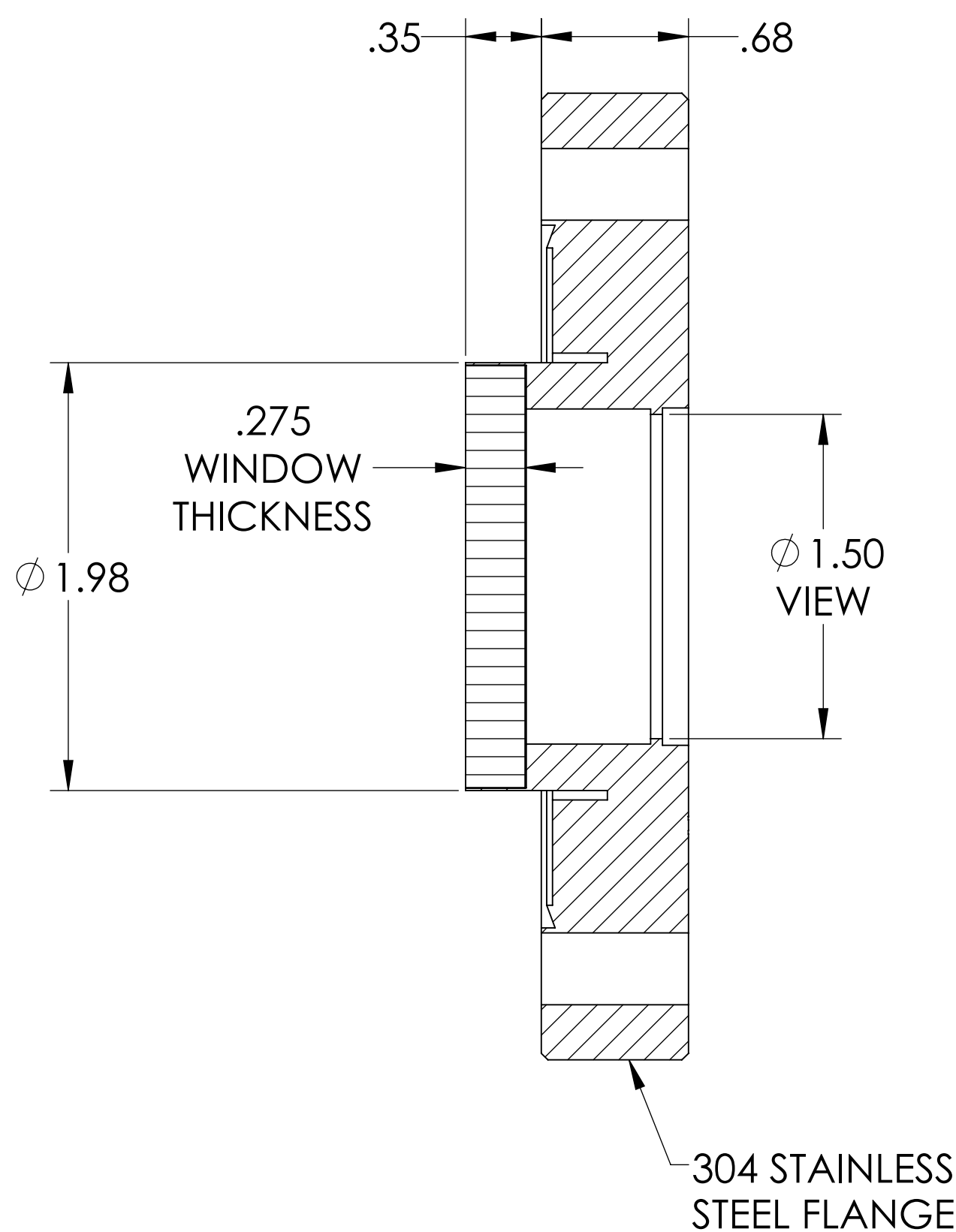
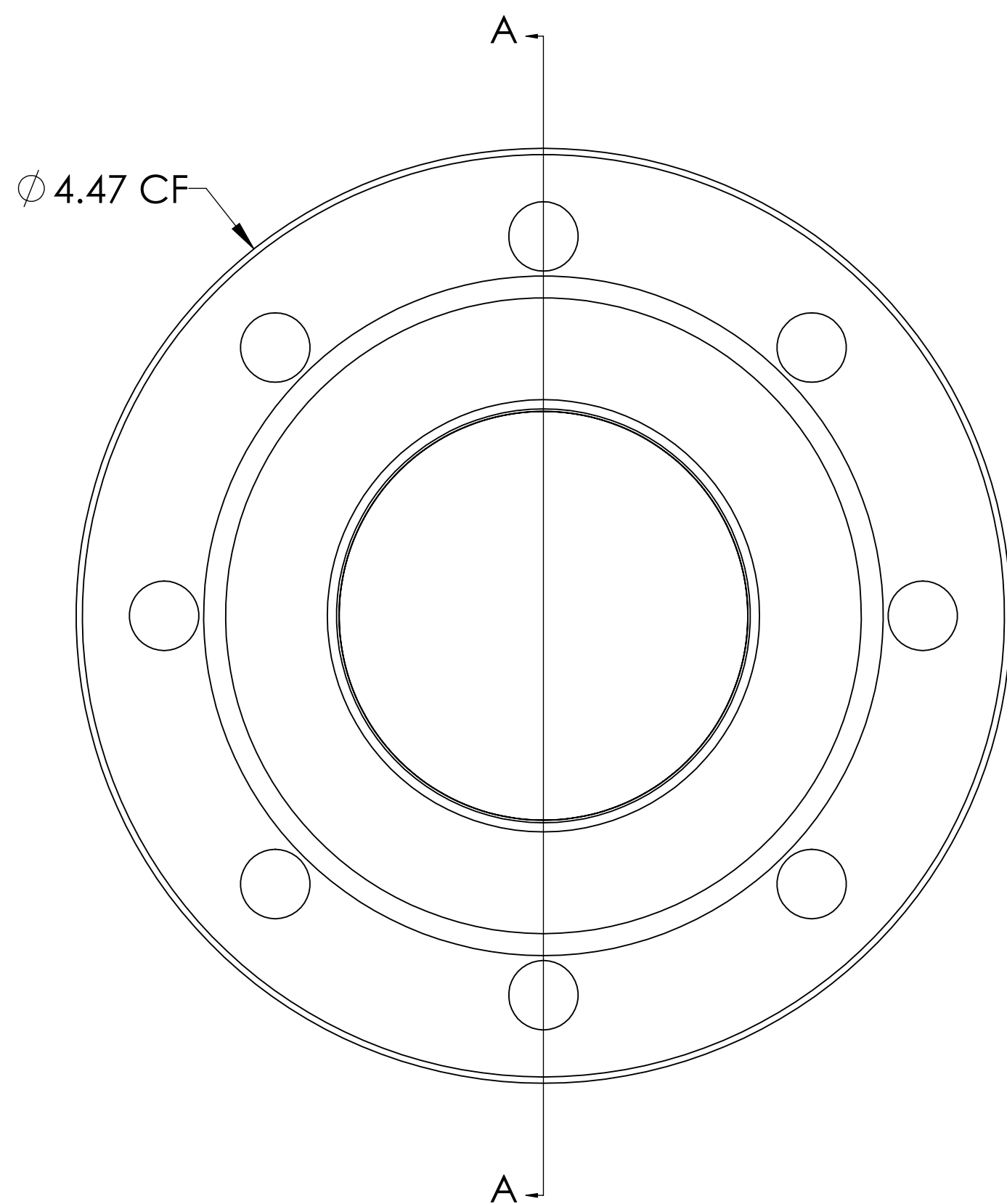


MPF PRODUCTS INC.

DIRECTION OF PRESSURE ↘



SPECIFICATIONS:

1. MATERIAL: SAPPHIRE
2. TWD <math>< 8\lambda</math> @ 632nm (PEAK TO VALLEY)
3. PARALLELISM <math>< 3</math> ARC-MINUTES
4. SURFACE FINISH: 50-20 SCRATCH-DIG
5. THERMAL RANGE: -100 °C TO 450 °C
6. ORIENTATION: 0 °
7. LEAK RATE <math>< 1 \times 10^{-9}</math> ATM CC/SEC HE

UV Grade Sapphire Viewport, Over-Pressure, 1.50" View Dia, 4.50" Conflat Flange

UNLESS OTHERWISE SPECIFIED:		QUOTATION #		N/A	
DIMENSIONS ARE IN INCHES		NAME	DATE	MPF PRODUCTS INC.	
TOLERANCES:		DRAWN	9/11/2015		
ANGULAR: MACH ± 1/2°		CHECKED	9/11/2015		
TWO PLACE DECIMAL ± .030		ENG APPR.	9/11/2015		
THREE PLACE DECIMAL ± .015		THIRD ANGLE:		1.50" VIEW, OVER-PRESSURE, SAPPHIRE VIEWPORT	
MATERIAL					
FINISH		APPLICATION			
PLATING		NEXT ASSY	USED ON	DOWNLOADED FROM MPFPI.COM	
SURFACE FINISH: 63 OR BETTER		UNLESS OTHERWISE SPECIFIED:		DWG. NO.	REV
ALL DIAMETERS CONCENTRIC WITHIN .005. REMOVE ALL BURRS AND SHARP EDGES		FRIDAY, JANUARY 25, 2019 4:19:06 PM		A12820-1-CF	