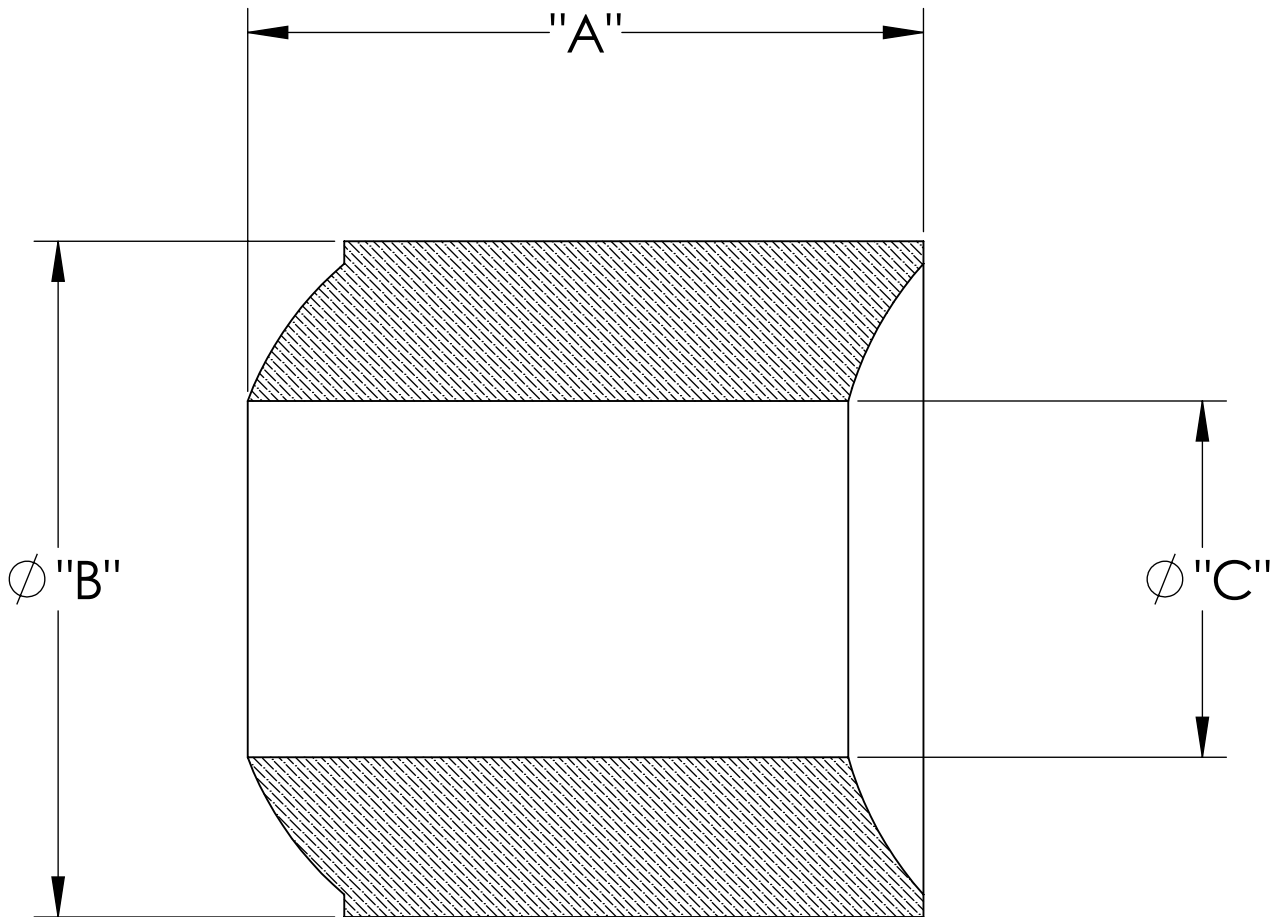


MPF PRODUCTS INC.



PART #	"A"	"B"	"C"	ACCEPTS WIRE ϕ	QTY PER PACK
A1429-1-C	.110	.110	.058	.045	113
A1429-2-C	.185	.183	.087	.064	74
A1429-3-C	.170	.170	.068	.050	74
A1429-4-C	.260	.239	.107	.102	52
A1429-5-C	.260	.240	.144	.128	52
A1429-6-C	.400	.366	.146	.128	31

Alumina Bead, In-Vacuum, Package = 1 Foot Length

UNLESS OTHERWISE SPECIFIED:		QUOTATION #		N/A	
DIMENSIONS ARE IN INCHES TOLERANCES: ANGULAR: MACH $\pm 1/2^\circ$ TWO PLACE DECIMAL $\pm .030$ THREE PLACE DECIMAL $\pm .015$ MATERIAL		DRAWN	NAME	DATE	MPF PRODUCTS INC. TITLE: CERAMIC BEAD, ALUMINA DOWNLOADED FROM MPFPI.COM DWG. NO. A1429 REV
		CHECKED	WJ	9/11/2015	
		ENG APPR.	WJ	9/11/2015	
		THIRD ANGLE: 			
FINISH		APPLICATION			
PLATING		NEXT ASSY		USED ON	
		SURFACE FINISH:		63/ OR BETTER	
		UNLESS OTHERWISE SPECIFIED:			
		ALL DIAMETERS CONCENTRIC WITHIN .005. REMOVE ALL BURRS AND SHARP EDGES		Wednesday, February 13, 2019 9:28:31 AM	