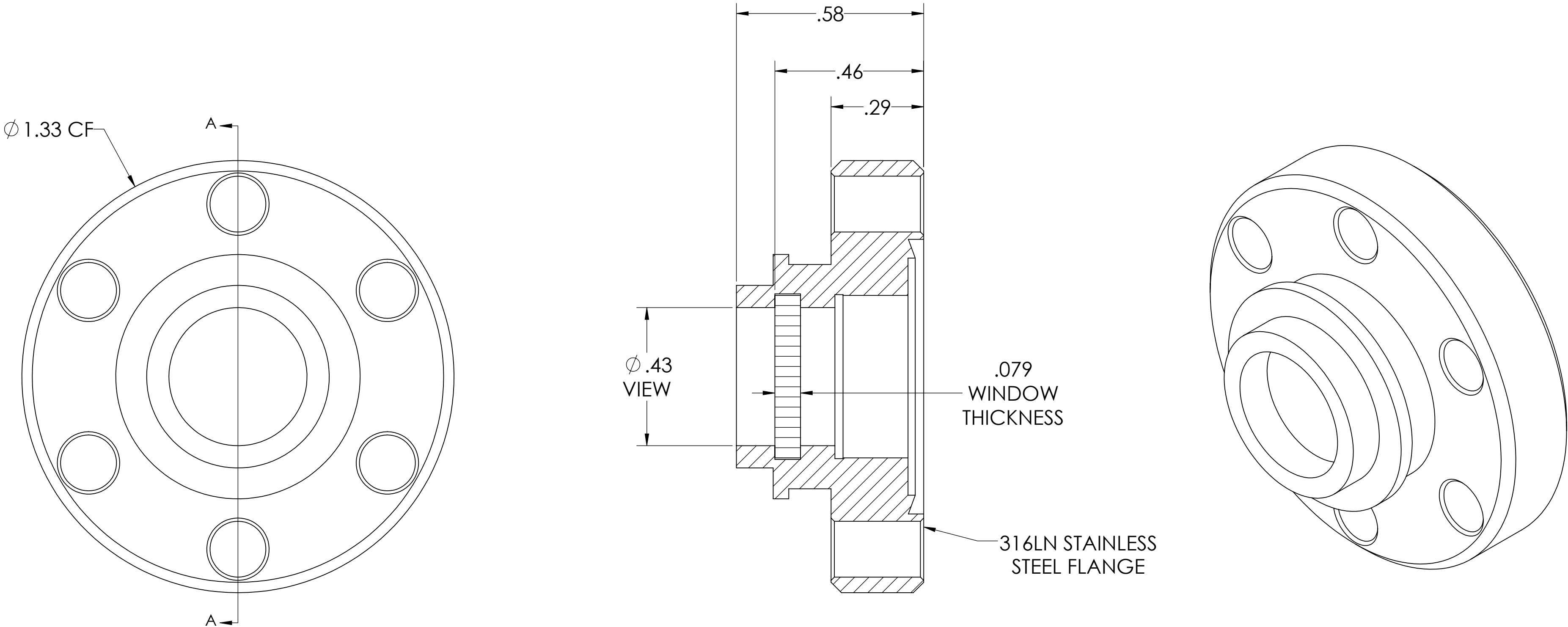
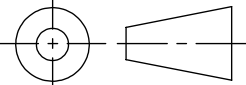



MPF PRODUCTS INC.



- NOTES:
- 1. MATERIAL: ZnSe
 - 2. TWD < 1/20 λ @ 10.6 MICRONS
 - 3. AR COATED BOTH SIDES: 8-12 MICRONS
 - 4. SURFACE FINISH: 60/40 SCRATCH-DIG
 - 5. PARALLELISM: 3 ARC MINUTES OR BETTER
 - 6. THERMAL RANGE: -100°C TO 200°C
 - 7. LEAK RATE < 1 X 10-9 ATM CC/SEC HE

Zinc Selenide (ZnSe) Viewport, AR Coated 8-12 Microns, UHV Rated Vacuum Optics, 0.40" View Dia, 1.33" Conflat Flange

UNLESS OTHERWISE SPECIFIED:		QUOTATION #		APPROVED	
DIMENSIONS ARE IN INCHES TOLERANCES: ANGULAR: MACH ± 1/2° TWO PLACE DECIMAL ± .030 THREE PLACE DECIMAL ± .015			NAME	DATE	MPF PRODUCTS INC.
		DRAWN	WJ	11/14/2015	
		CHECKED	WJ	11/14/2015	
		ENG APPR.	WJ	11/14/2015	
MATERIAL Material <not specified>		THIRD ANGLE:			TITLE: VIEWPORT, ZnSe, AR COATED 8-12 MICRONS, VAC-OPTICS, 0.40" VIEW, 133CF
					
		APPLICATION			
		NEXT ASSY	USED ON		
FINISH CONFLAT		SURFACE FINISH:			DOWNLOADED FROM MPFPI.COM
		 OR BETTER			
PLATING		UNLESS OTHERWISE SPECIFIED:			DWG. NO. A14346-1-CF
		ALL DIAMETERS CONCENTRIC WITHIN .005. REMOVE ALL BURRS AND SHARP EDGES			
					REV
Monday, January 28, 2019 10:17:32 AM					