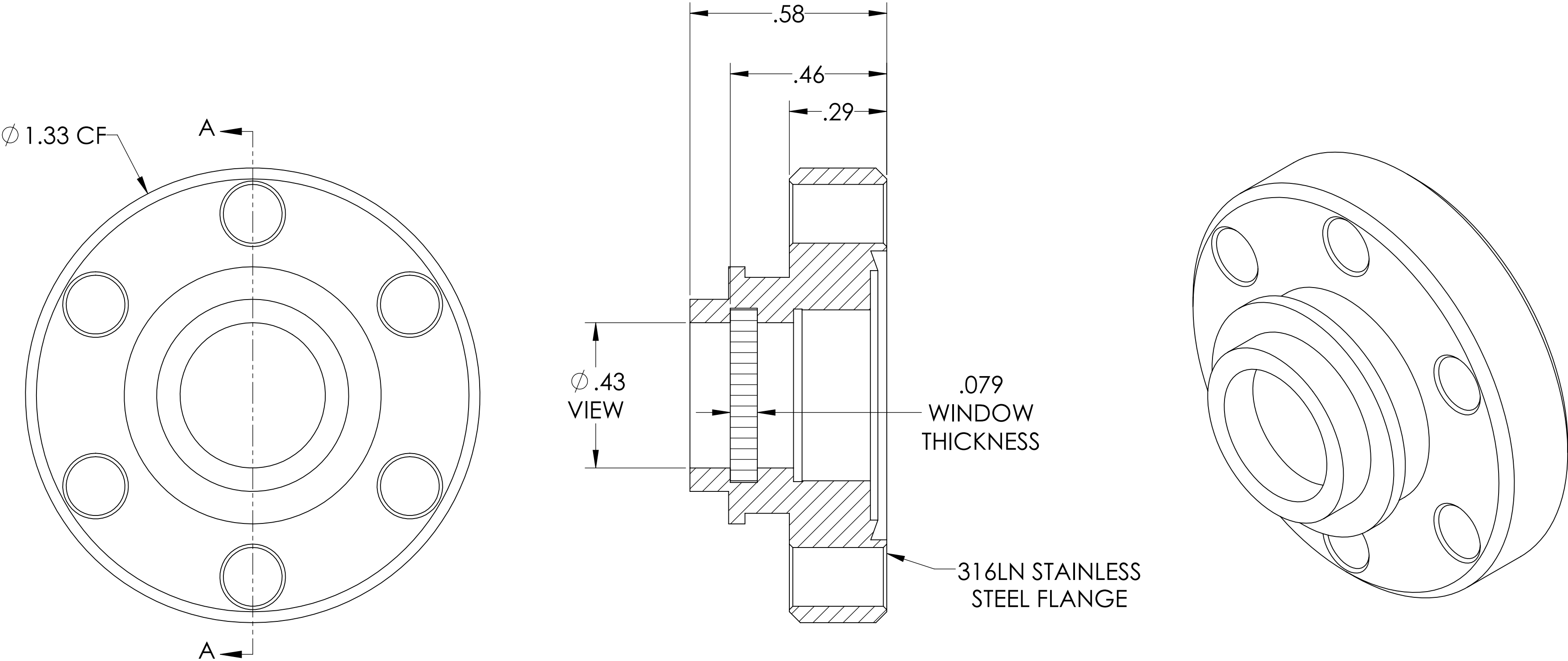


MPF PRODUCTS INC.



- SPECIFICATIONS:
- 1. MATERIAL: ZINC SULFIDE (CLEARTRAN)
 - 2. TWD < $\lambda/4$ @ 632NM (PEAK TO VALLEY)
 - 3. PARALLELISM < 3 ARC MINUTES
 - 4. SURFACE FINISH: 40/20 SCRATCH-DIG
 - 5. BBAR COATED BOTH SIDES 8-12 MICRONS
 - 6. THERMAL RANGE: -100°C TO 200°C
 - 7. LEAK RATE < 1 X 10-9 ATM/CC SEC HE
 - 8. MAGNETIC PERMEABILITY (μ) < 1.01

Non-Magnetic Zinc Selenide (ZnSe) Viewport, UHV Rated Vacuum Optics, 0.40" View Dia, 1.33" Conflat Flange(316LN)

UNLESS OTHERWISE SPECIFIED: DIMENSIONS ARE IN INCHES TOLERANCES: ANGULAR: MACH $\pm 1/2^\circ$ TWO PLACE DECIMAL $\pm .030$ THREE PLACE DECIMAL $\pm .015$ MATERIAL SEE NOTES FINISH CONFLAT PLATING	QUOTATION #			APPROVED MPF PRODUCTS INC. TITLE: VIEWPORT, ZnSe NON-MAGNETIC VAC-OPTICS, 0.40" VIEW, 133CF DOWNLOADED FROM MPFPI.COM DWG. NO. A14352-1-CF REV
	DRAWN	WJ	04/29/2014	
	CHECKED		04/29/2014	
	ENG APPR.	WJ	04/29/2014	
THIRD ANGLE: 				
APPLICATION NEXT ASSY USED ON				
SURFACE FINISH: $\sqrt{63}$ OR BETTER				
UNLESS OTHERWISE SPECIFIED: ALL DIAMETERS CONCENTRIC WITHIN .005. REMOVE ALL BURRS AND SHARP EDGES				