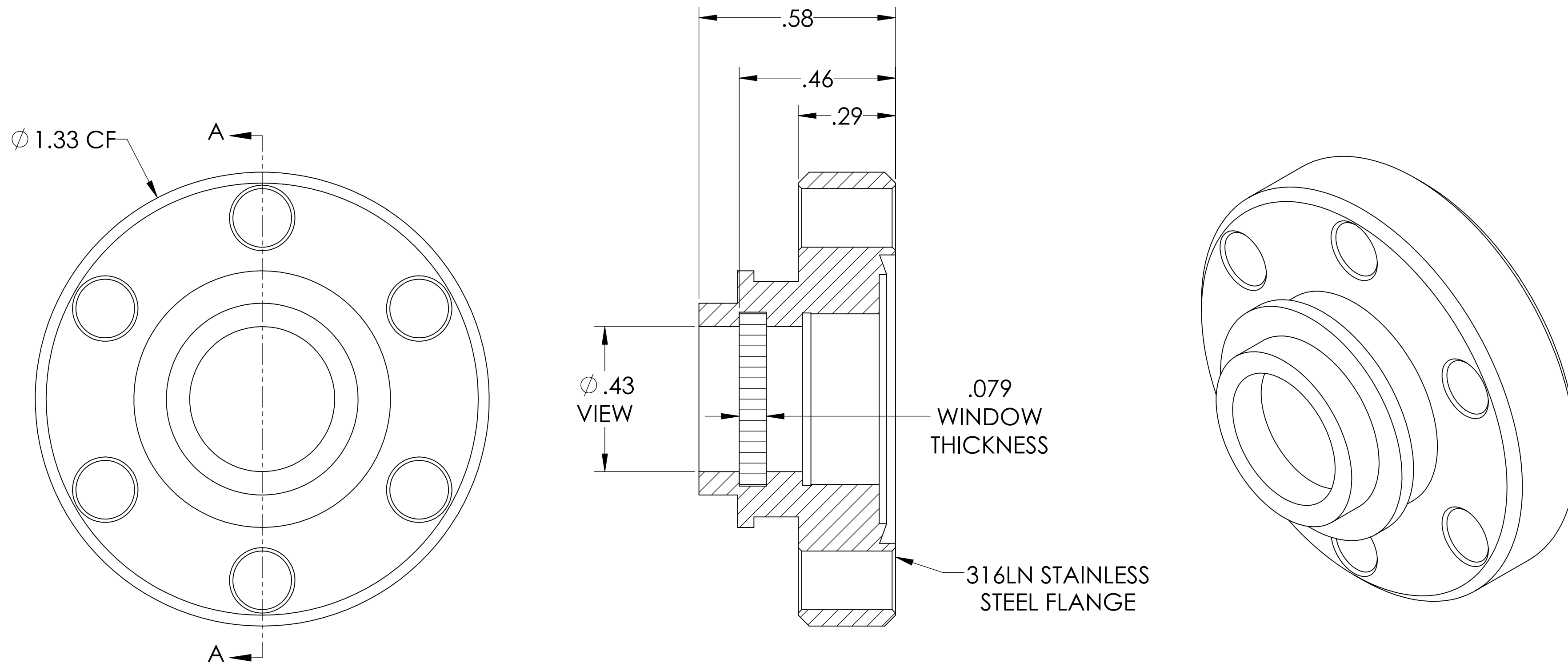


## MPF PRODUCTS INC.



## SPECIFICATIONS:

1. MATERIAL: SINGLE CRYSTAL, 0° MAGNESIUM FLUORIDE
2. FLATNESS <math>< \lambda/2 @ 632\text{NM}</math> (PEAK TO VALLEY)
3. PARALLELISM <math>< 3</math> ARC MINUTES
4. SURFACE FINISH: 20/10 SCRATCH-DIG
5. THERMAL RANGE: -100°C TO 200°C
6. LEAK RATE <math>< 1 \times 10^{-9}</math> ATM/CC SEC HE
7. MAGNETIC PERMEABILITY ( $\mu$ ) <math>< 1.01</math>

Non-Magnetic Magnesium Fluoride (MgF2) Viewport, UHV Rated Vacuum Optics, 0.40" View Dia, 1.33" Conflat Flange(316LN)

|   |                             |   |   |
|---|-----------------------------|---|---|
| UNLESS OTHERWISE SPECIFIED:             | QUOTATION #                 | N/A   | APPROVED  |
| DIMENSIONS ARE IN INCHES<br>TOLERANCES: | DRAWN                       | WJ  | 04/29/2014  |
| ANGULAR: MACH $\pm 1/2^\circ$           | CHECKED                     | WJ  | 04/29/2014  |
| TWO PLACE DECIMAL $\pm .030$            | ENG APPR.                   | WJ  | 04/29/2014  |
| THREE PLACE DECIMAL $\pm .015$          | THIRD ANGLE:                |   |   |
| MATERIAL                                | APPLICATION                 |   |   |
| SEE NOTES                               | NEXT ASSY                   | USED ON   | TITLE:<br>VIEWPORT, MgF2<br>NON-MAGNETIC<br>VACUUM OPTICS,<br>0.40" VIEW, 133CF |
| FINISH                                  | SURFACE FINISH:             | 63/ OR BETTER   | DOWNLOADED FROM MPFPI.COM   |
| PLATING                                 | UNLESS OTHERWISE SPECIFIED: | ALL DIAMETERS CONCENTRIC WITHIN .005.<br>REMOVE ALL BURRS AND SHARP EDGES | DWG. NO. A14354-1-CF  |
|   |                             |   | REV   |
|   |                             |   | Thursday, July 11, 2019 11:10:33 AM   |