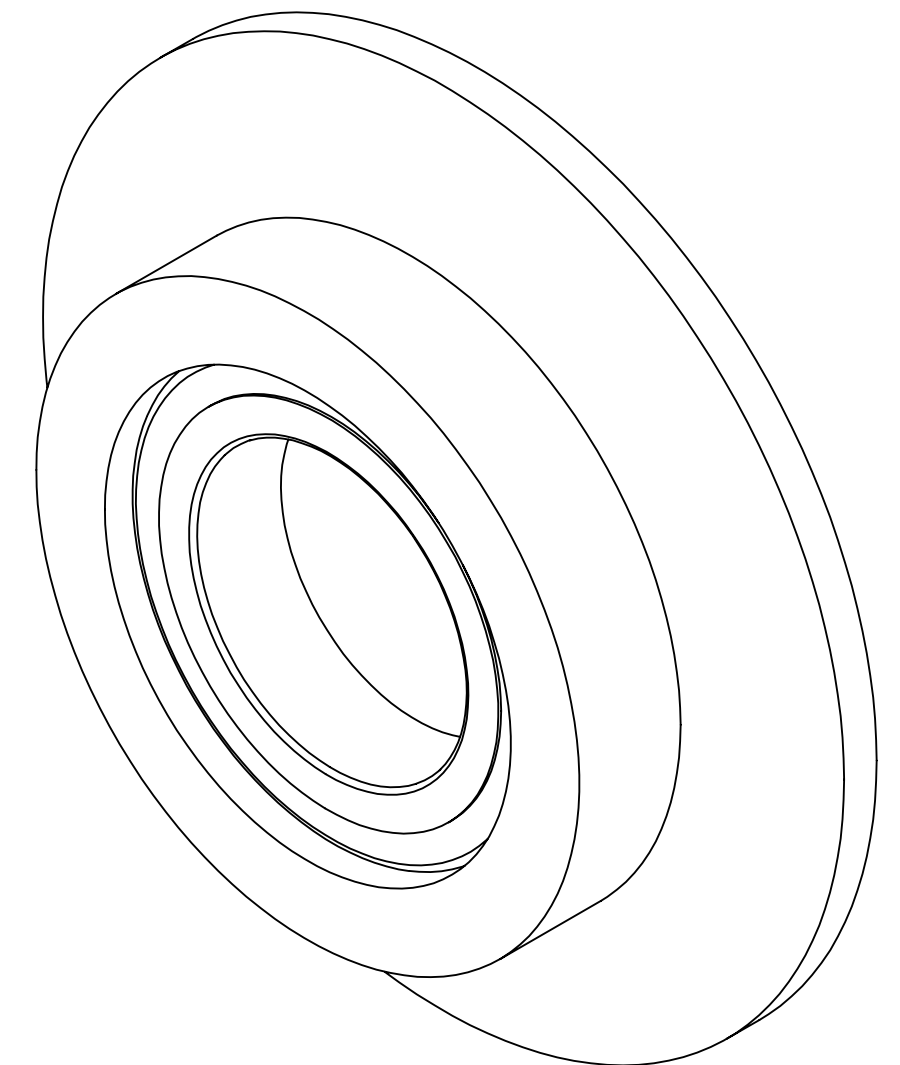
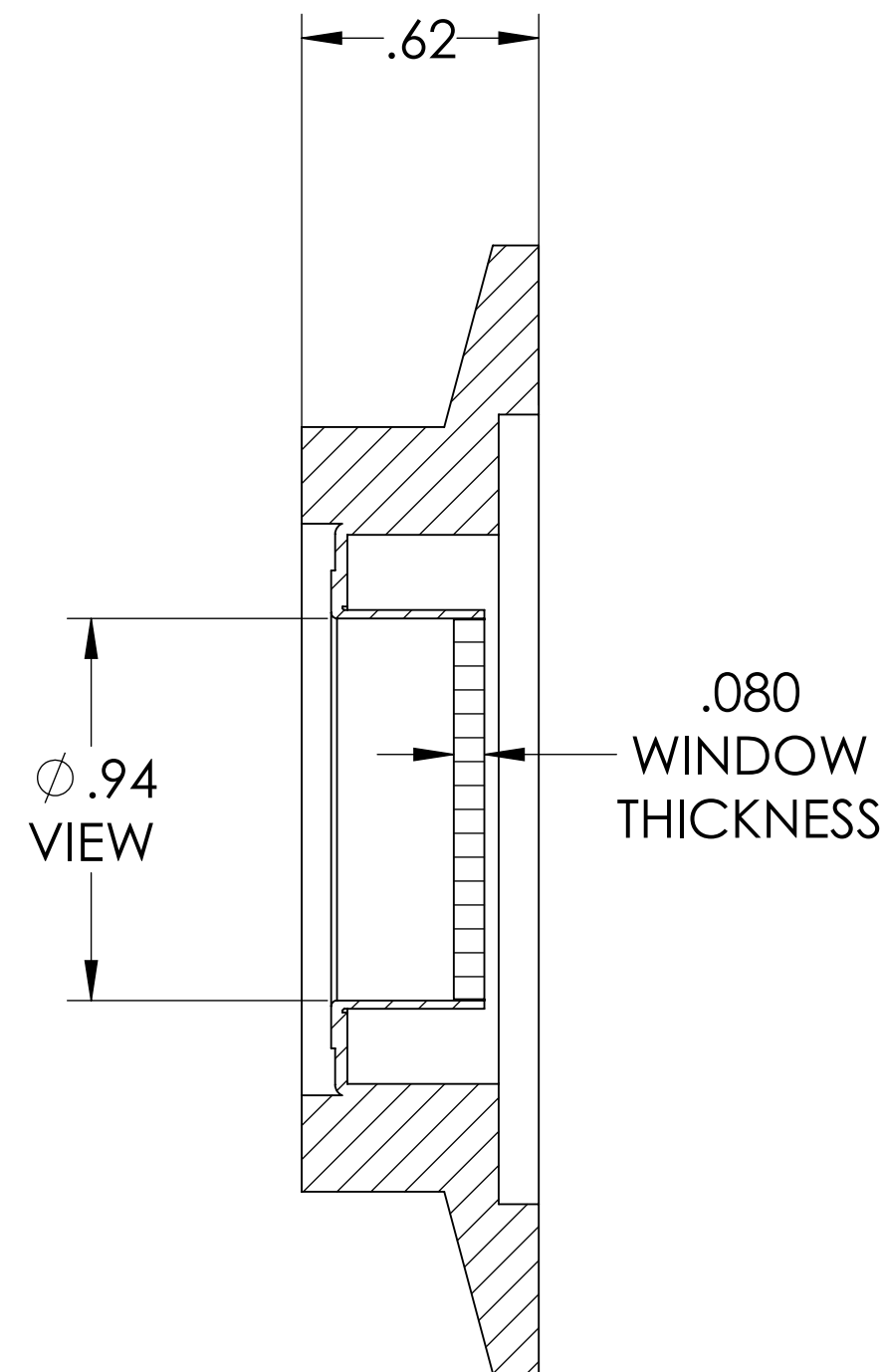
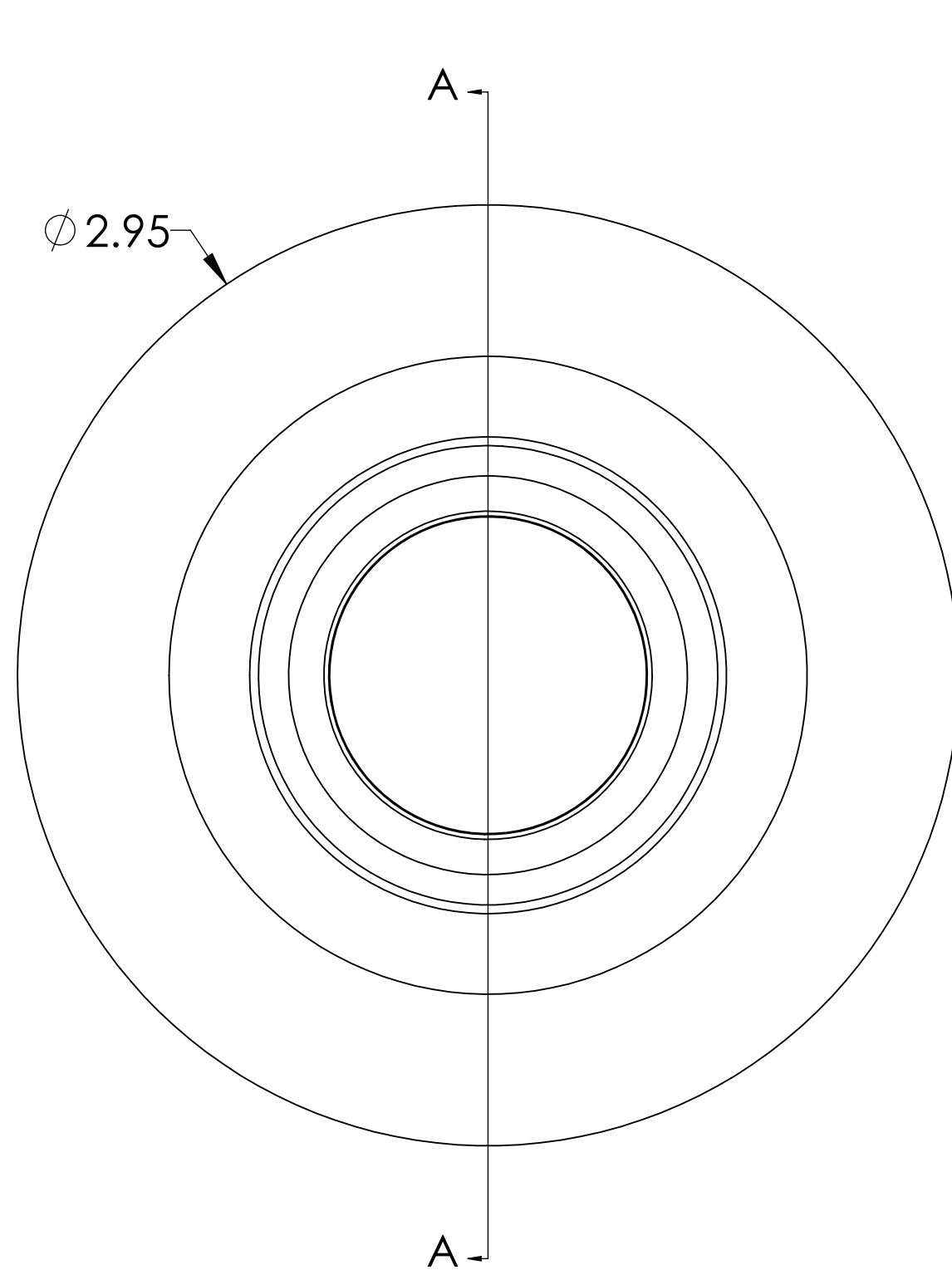


# MPF PRODUCTS INC.



**SPECIFICATIONS:**

1. MATERIAL: SAPPHIRE
2. TWD <math>< 8\lambda</math> @ 632nm (PEAK TO VALLEY)
3. PARALLELISM <math>< 3</math> ARC MINUTES
4. SURFACE FINISH: 50/20 SCRATCH-DIG
5. THERMAL RANGE: -100 °C TO 450 °C
6. ORIENTATION: RANDOM
7. LEAK RATE <math>< 1 \times 10^{-9}</math> ATM CC/SEC HE

UV Grade Sapphire Viewport, 0.94" View Dia, 2.95" QF/KF

UNLESS OTHERWISE SPECIFIED:		QUOTATION #		N/A	
DIMENSIONS ARE IN INCHES		NAME	DATE	MPF PRODUCTS INC.	
TOLERANCES:		WJ	9/11/2015		
ANGULAR: MACH ± 1/2°		CHECKED	9/11/2015		
TWO PLACE DECIMAL ± .030		ENG APPR.	WJ 9/11/2015		
THREE PLACE DECIMAL ± .015		THIRD ANGLE:		VIEWPORT, SAPPHIRE, UV, 0.9 VIEW, QF/KF 50	
MATERIAL					
FINISH		APPLICATION			
PLATING		NEXT ASSY	USED ON	DOWNLOADED FROM MPFPI.COM	
SURFACE FINISH: 63/ OR BETTER		UNLESS OTHERWISE SPECIFIED:		DWG. NO.	REV
ALL DIAMETERS CONCENTRIC WITHIN .005. REMOVE ALL BURRS AND SHARP EDGES		Friday, January 25, 2019 7:04:29 AM		A1641-1-QF	