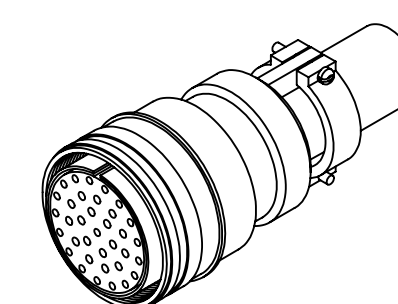
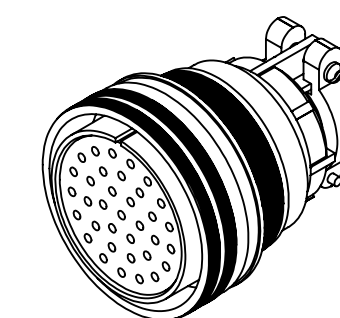
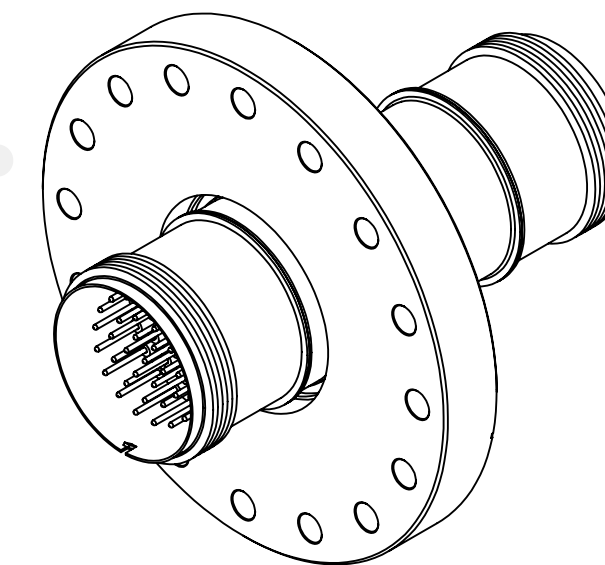
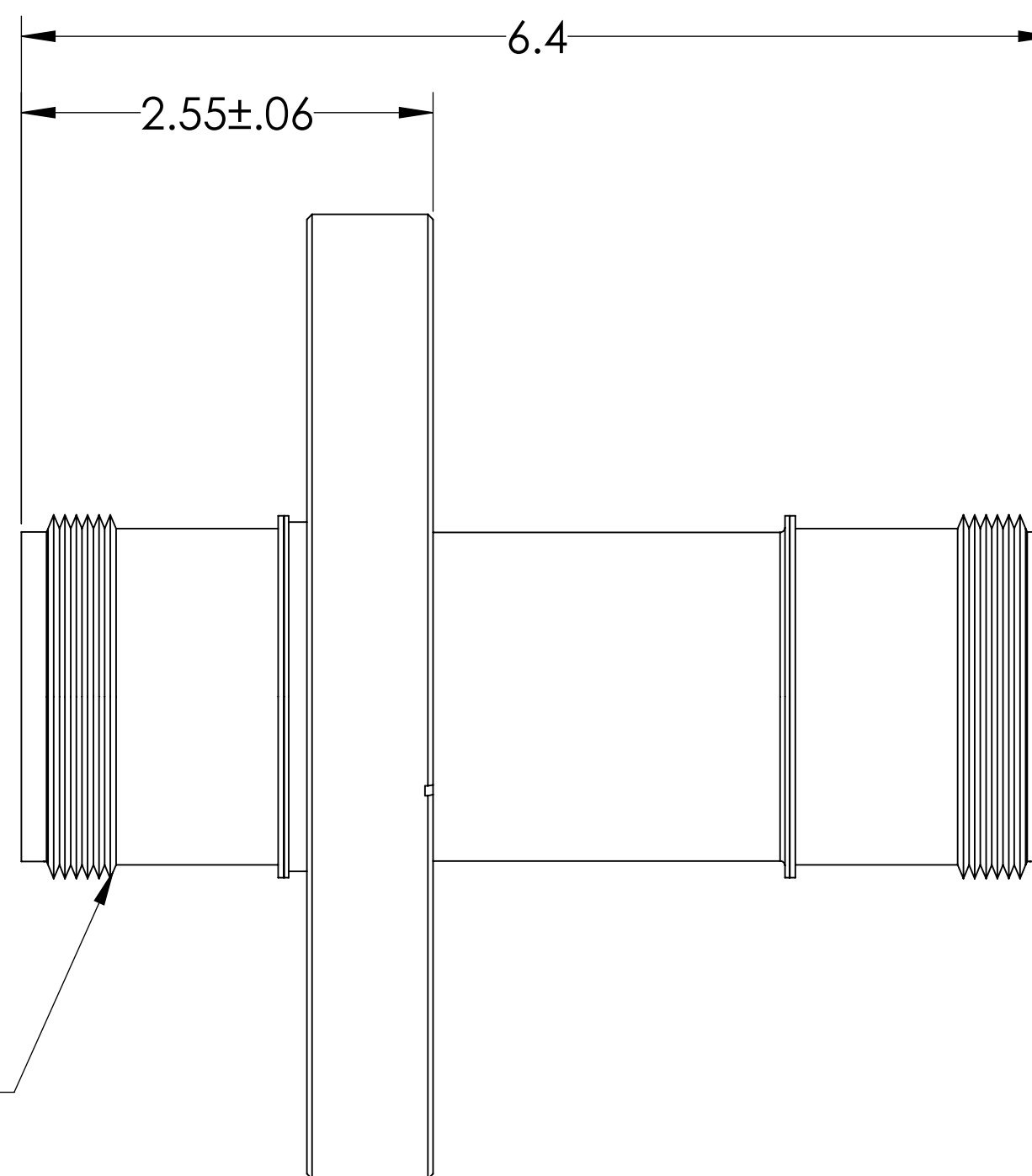
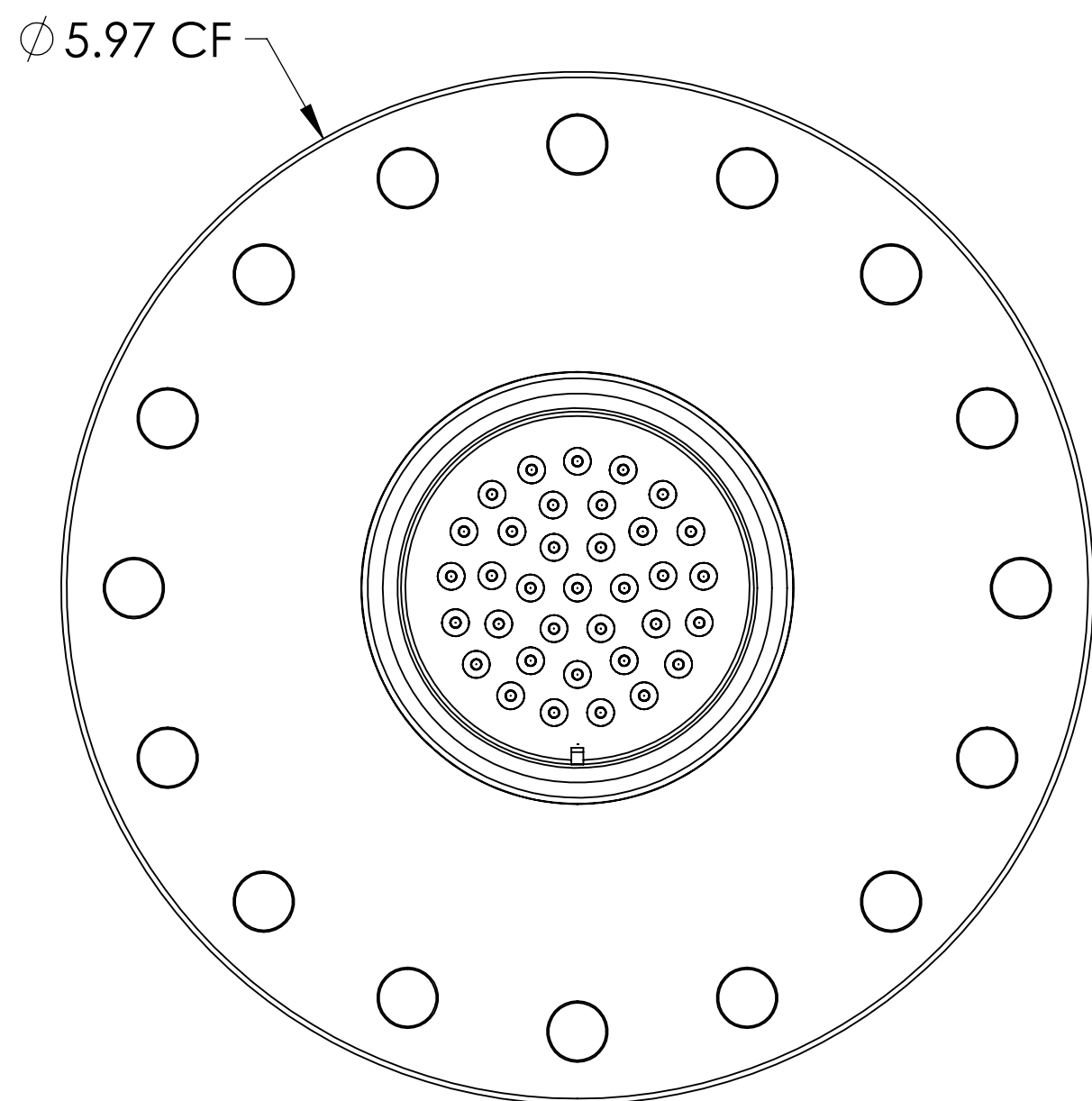


MPF PRODUCTS INC.



SPECIFICATIONS:

1. VOLTAGE: 700 VOLTS DC
2. CURRENT: 10 AMPS PER PIN, 100 AMPS FULL LOAD
3. TEMPERATURE RATING: -100 TO 450°C WITHOUT CONNECTOR
4. LEAK RATE < 1X10-9 ATM CC/SEC HE

MS Series, Multipin Feedthrough, 35 Pins, 700 Volts, 10 Amps per Pin, Double-Ended w/ Air & Vacuum-side Connectors, 5.97" Conflat Flange

UNLESS OTHERWISE SPECIFIED:		QUOTATION #		N/A		
DIMENSIONS ARE IN INCHES		NAME	DATE	MPF PRODUCTS INC.		
TOLERANCES:		DRAWN	WJ			9/11/2015
ANGULAR: MACH ± 1/2°		CHECKED	WJ			9/11/2015
TWO PLACE DECIMAL ± .030		ENG APPR.	WJ			9/11/2015
THREE PLACE DECIMAL ± .015		THIRD ANGLE:		MULTIPIN, 35 PINS, 700V, 10 A, DOUBLE ENDED, 600CF		
MATERIAL						
FINISH						
PLATING		UNLESS OTHERWISE SPECIFIED:		DOWNLOADED FROM MPFPI.COM		
		ALL DIAMETERS CONCENTRIC WITHIN .005. REMOVE ALL BURRS AND SHARP EDGES		DWG. NO.	REV.	
				A1884-1-CF		
				Monday, January 28, 2019 9:28:51 AM		