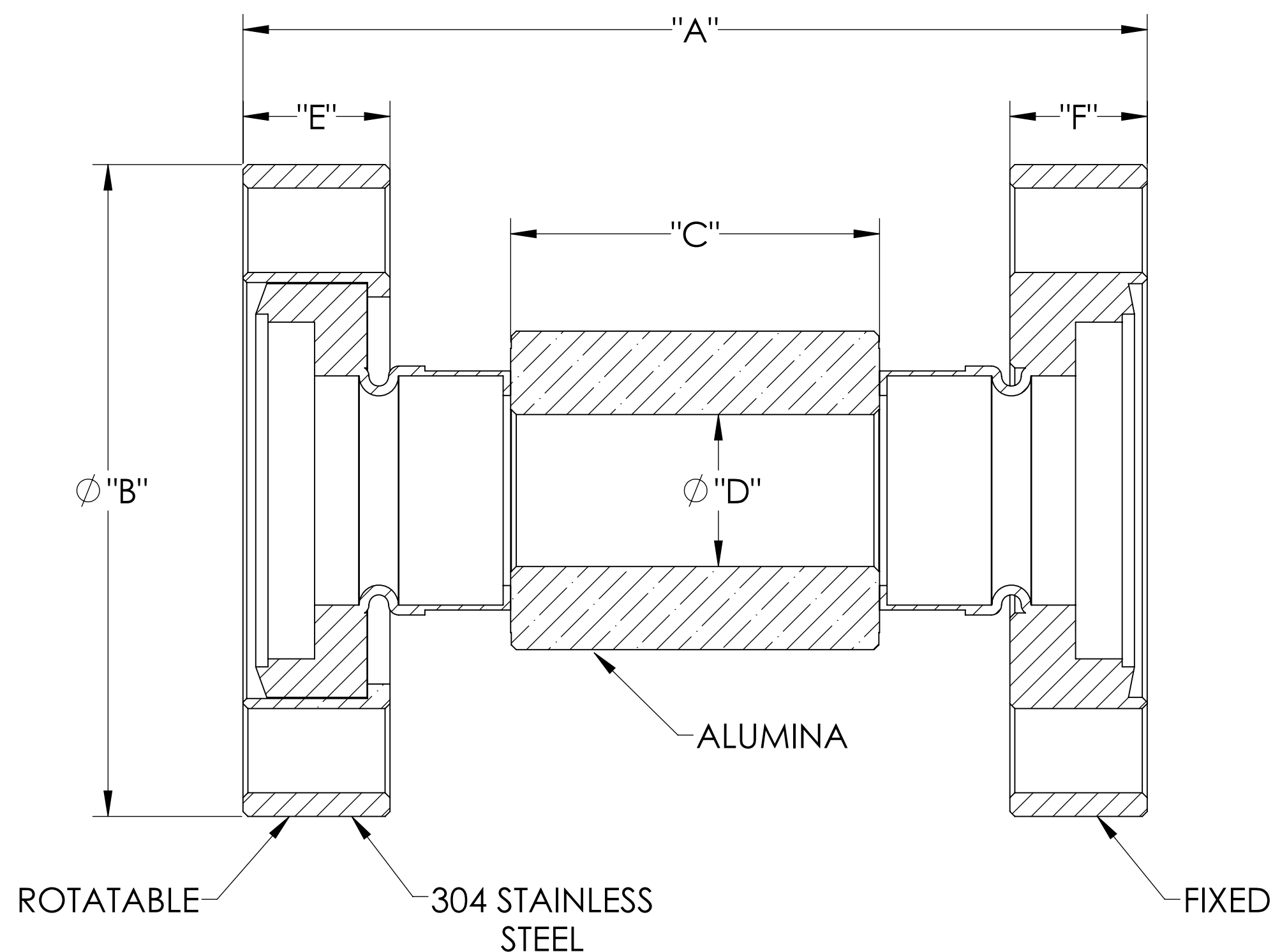
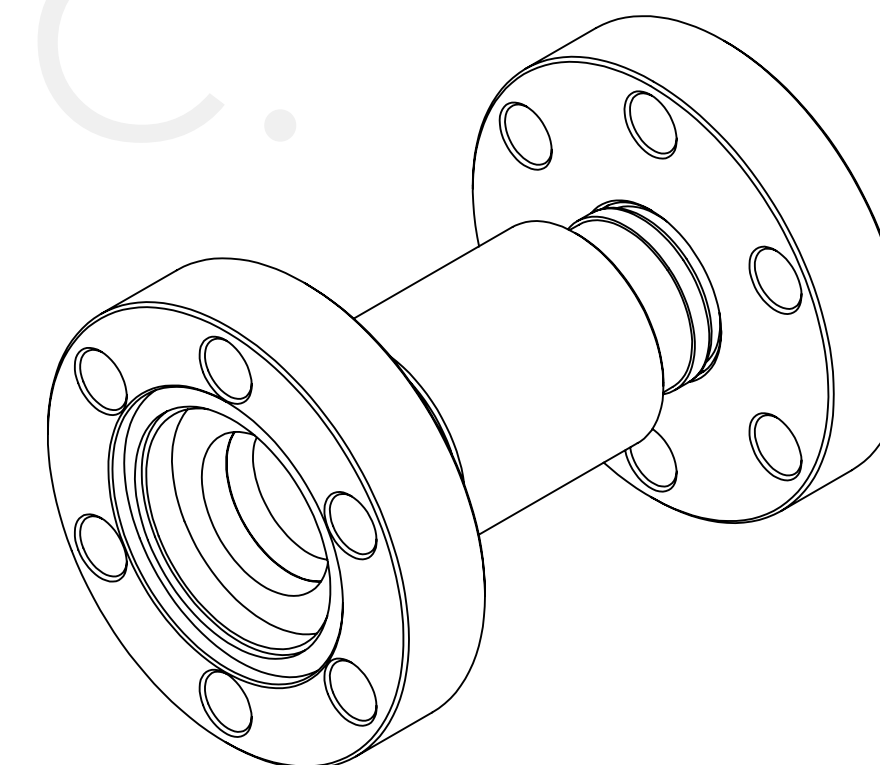


MPF PRODUCTS INC.



PART #	"A" ±.10	"B"	"C" ±.030	Ø"D" ±.015	("E")	("F")	VOLTAGE
A1991-1-CF	1.84	1.33	.75	.31	.28	.28	10KV
A1991-2-CF	3.00	2.75	1.50	.90	.50	.50	20KV
A1991-3-CF	4.00	4.50	2.00	2.00	.95	.68	30KV
A1991-4-CF	4.80	6.00	3.00	2.50	.84	.78	40KV

SPECIFICATIONS:

- VOLTAGE: 10, 20, 30, 40KV
- TEMPERATURE: -200°C TO 450°C
- LEAK RATE < 1X10-9 ATM CC/SEC HE

Break, 10, 20, 30, 40KV Isolation, Conflat Flange, UHV Compatible

UNLESS OTHERWISE SPECIFIED:	QUOTATION #		N/A
DIMENSIONS ARE IN INCHES TOLERANCES:	NAME	DATE	MPF PRODUCTS INC.
ANGULAR: MACH ± 1/2°	DRAWN	9/11/2015	
TWO PLACE DECIMAL ± .030	CHECKED	9/11/2015	
THREE PLACE DECIMAL ± .015	ENG APPR.	9/11/2015	
MATERIAL	THIRD ANGLE:		BREAK, 10, 20, 30, 40KV ISOLATION, CONFLAT FLANGE
	APPLICATION	USED ON	
FINISH	SURFACE FINISH:	63/ OR BETTER	DOWNLOADED FROM MPFPI.COM
PLATING	UNLESS OTHERWISE SPECIFIED:	ALL DIAMETERS CONCENTRIC WITHIN .005. REMOVE ALL BURRS AND SHARP EDGES	DWG. NO. A1991
		Friday, January 25, 2019 11:55:38 AM	REV