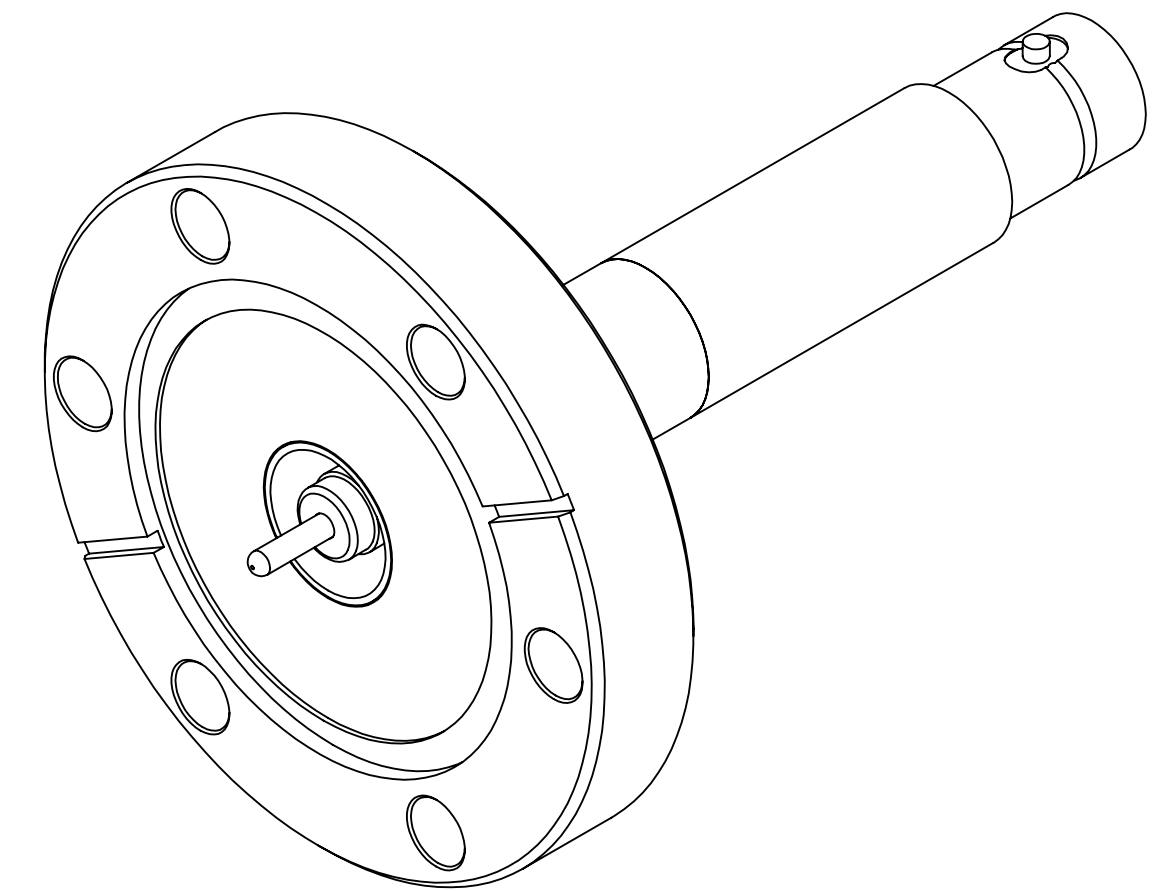
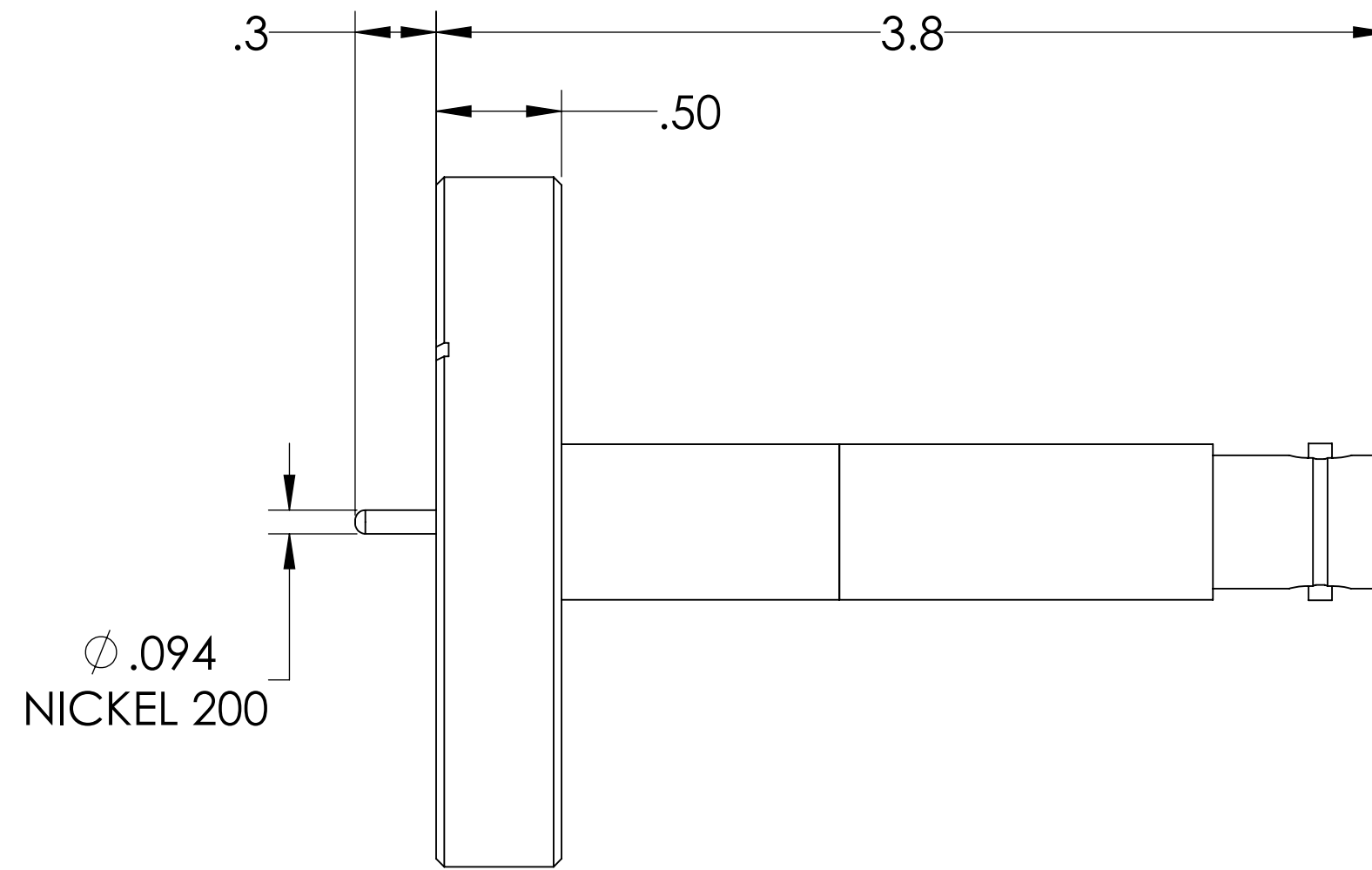
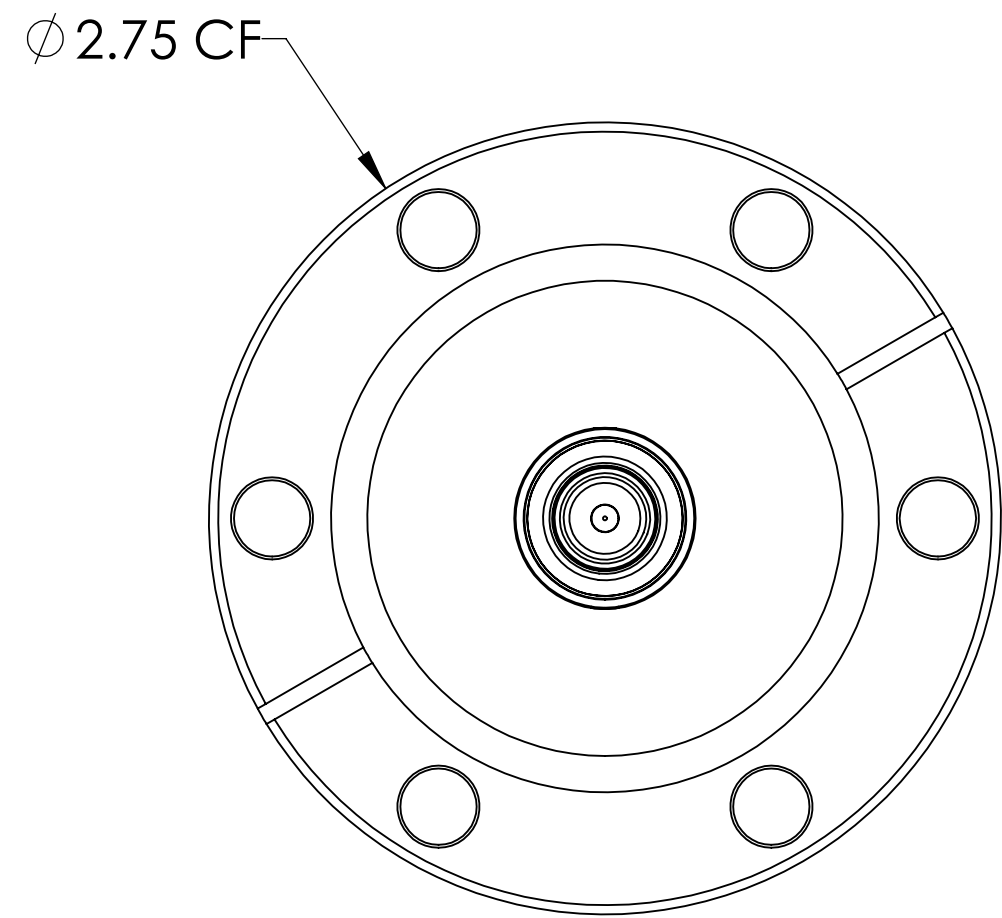
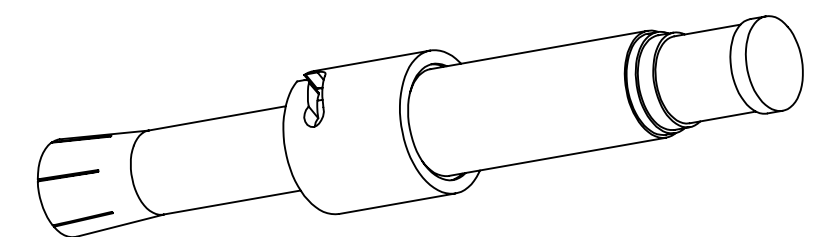


MPF PRODUCTS INC.



PART #	AIRSIDE CONNECTOR INCLUDED
A2095-1-CF	YES
A2095-2-CF	NO



NOTE:

1. SHIELD: GROUNDED
2. VOLTAGE: 20,000 VOLTS DC
3. CURRENT: 15 AMP
4. TEMPERATURE RATING: -200 TO 450°C (FEEDTHROUGH), 65 TO 165°C (AIRSIDE CONNECTOR)
5. IMPEDANCE: NON-CONSTANT

SHV-20 Coaxial Feedthrough, 1 Pin, Grounded Shield, 2.75" Conflat Flange, UHV Compatible

UNLESS OTHERWISE SPECIFIED:		QUOTATION #		N/A	
DIMENSIONS ARE IN INCHES TOLERANCES:		NAME	DATE	MPF PRODUCTS INC.	
ANGULAR: MACH ± 1/2°		DRAWN	9/11/2015		
TWO PLACE DECIMAL ± .030		CHECKED	9/11/2015		
THREE PLACE DECIMAL ± .015		ENG APPR.	9/11/2015		
MATERIAL		THIRD ANGLE:		TITLE: SHV-20 COAXIAL FEEDTHROUGH, 1 PIN, GROUNDED SHIELD, 2.75" CONFLAT FLANGE	
FINISH					
PLATING		APPLICATION NEXT ASSY USED ON			
SURFACE FINISH:		63/ OR BETTER		DOWNLOAD FROM MPFPI.COM DWG. NO. REV	
UNLESS OTHERWISE SPECIFIED:		ALL DIAMETERS CONCENTRIC WITHIN .005. REMOVE ALL BURRS AND SHARP EDGES		A2095 Tuesday, October 9, 2018 11:40:55 AM	