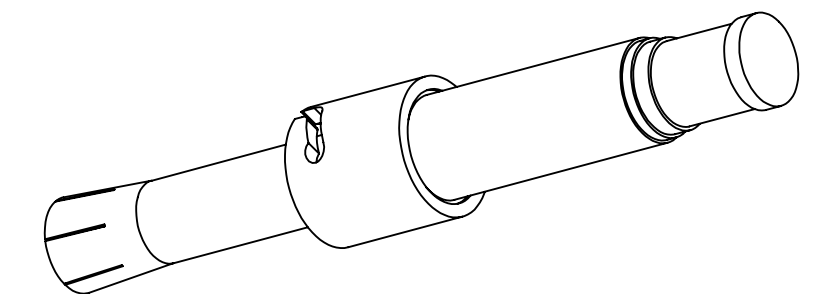
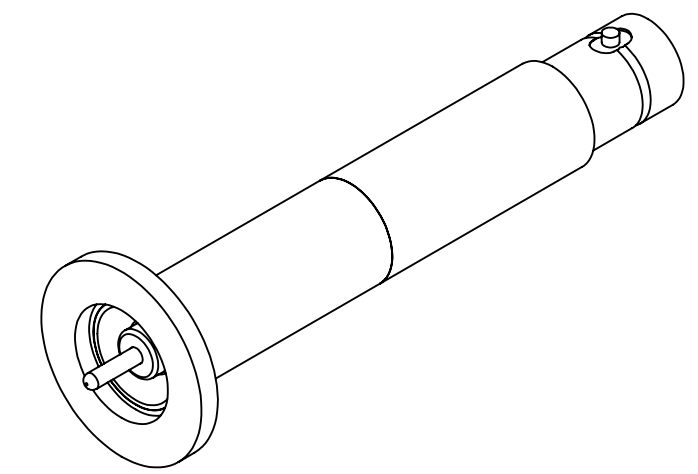
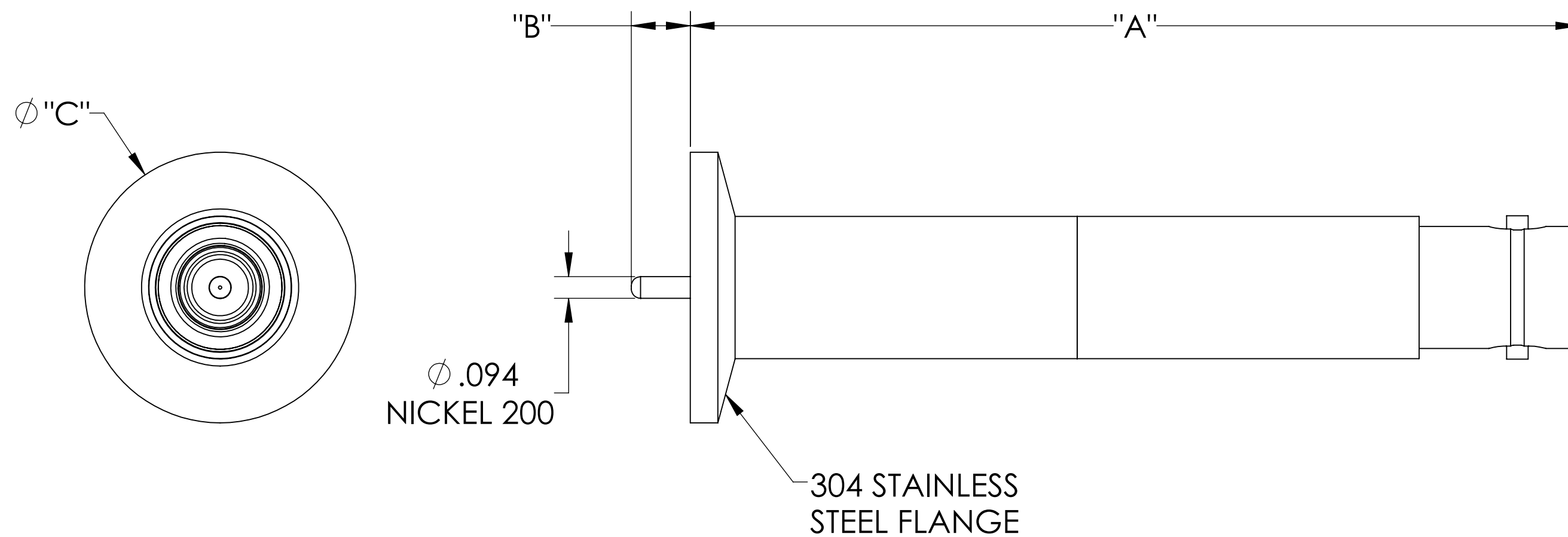


MPF PRODUCTS INC.



PART #	"A" DIM	"B" DIM	Ø "C" DIM	AIRSIDE CONNECTOR INCLUDED
A2096-1-QF	3.85	.27	1.18	YES
A2096-2-QF	3.75	.37	2.16	YES
A2096-3-QF	3.85	.27	1.18	NO
A2096-4-QF	3.75	.37	2.16	NO

NOTE:

1. SHIELD: GROUNDED
2. VOLTAGE: 20,000 VOLTS DC
3. CURRENT: 15 AMP
4. TEMPERATURE RATING: -200 TO 450°C (FEEDTHROUGH), 65 TO 165°C (AIRSIDE CONNECTOR)
5. IMPEDANCE: NON-CONSTANT

SHV-20 Coaxial Feedthrough, 1 Pin, Grounded Shield, QF/KF, UHV Compatible

UNLESS OTHERWISE SPECIFIED:		QUOTATION #		N/A		
DIMENSIONS ARE IN INCHES		NAME	DATE	MPF PRODUCTS INC.		
TOLERANCES:		DRAWN	WJ			9/11/2015
ANGULAR: MACH ± 1/2°		CHECKED				9/11/2015
TWO PLACE DECIMAL ± .030		ENG APPR.	WJ	9/11/2015	TITLE:	
THREE PLACE DECIMAL ± .015		THIRD ANGLE:		SHV-20 COAXIAL FEEDTHROUGH, 1 PIN, GROUNDED SHIELD, QF/KF		
MATERIAL		APPLICATION		DOWNLOADED FROM MPFPI.COM		
		NEXT ASSY	USED ON	DWG. NO.		
FINISH		SURFACE FINISH: 63 OR BETTER		REV		
PLATING		UNLESS OTHERWISE SPECIFIED:		A2096		
		ALL DIAMETERS CONCENTRIC WITHIN .005. REMOVE ALL BURRS AND SHARP EDGES		Thursday, January 17, 2019 4:07:03 PM		