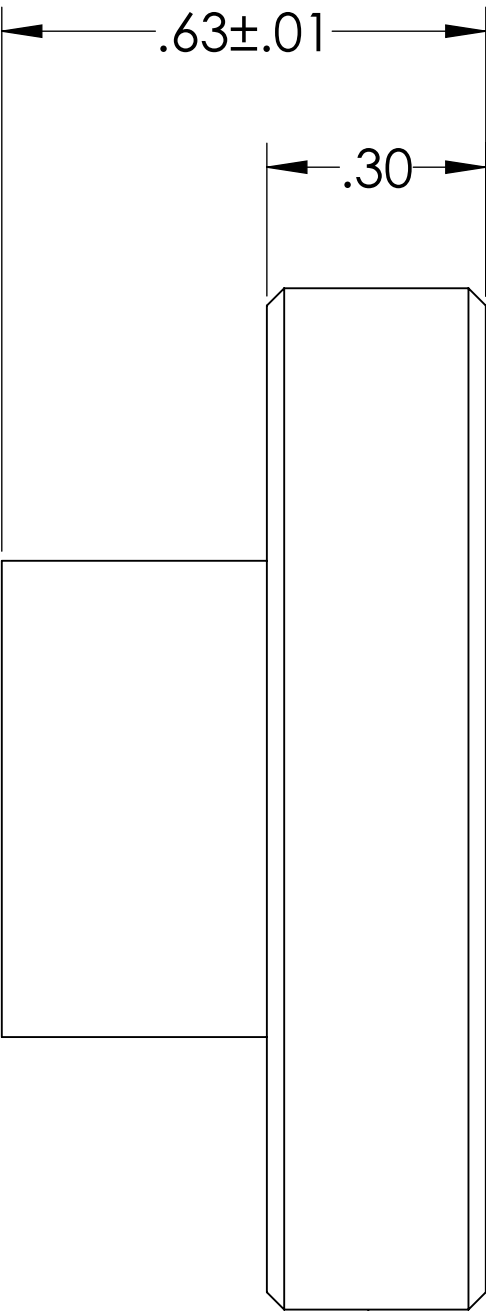
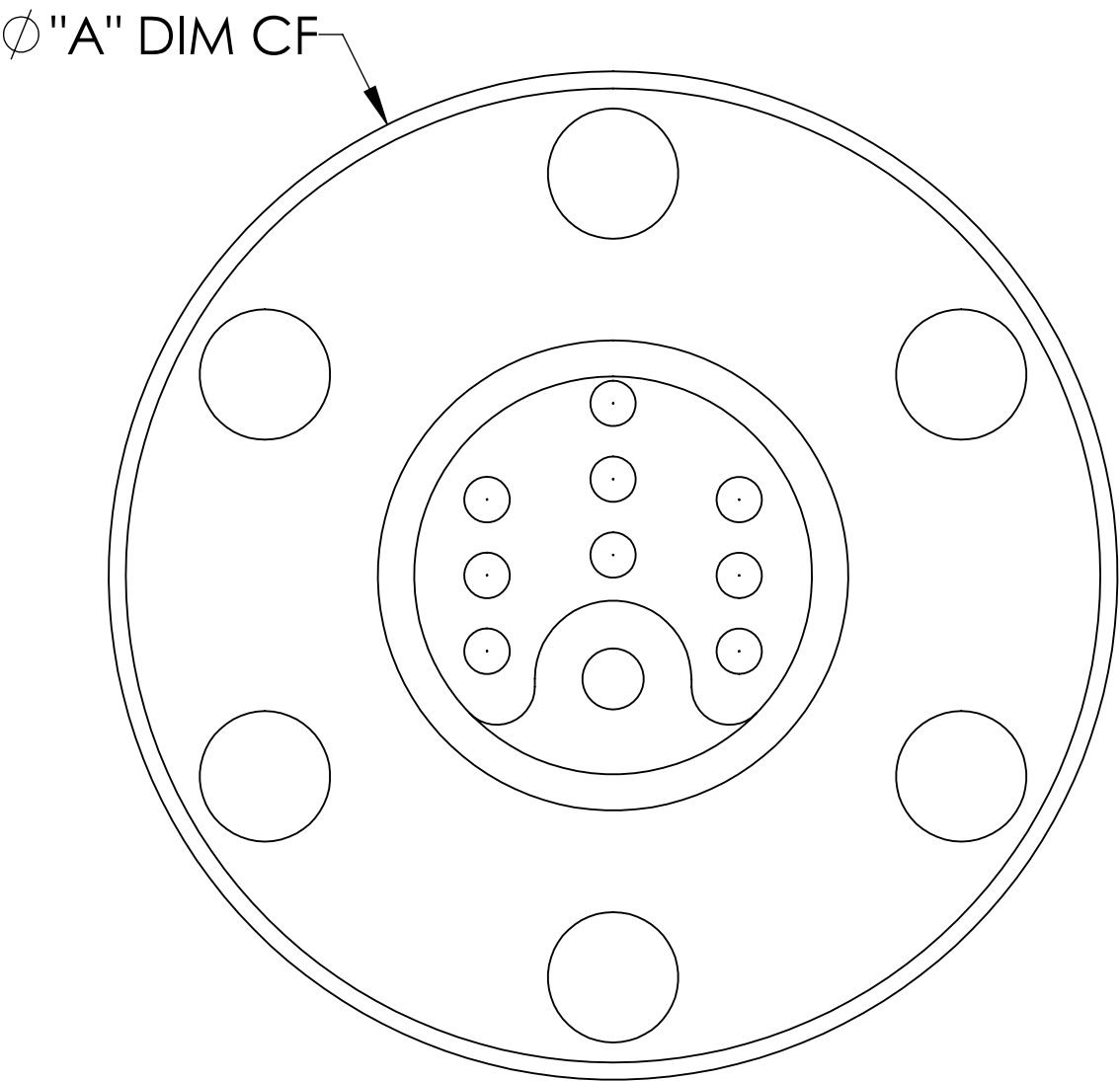
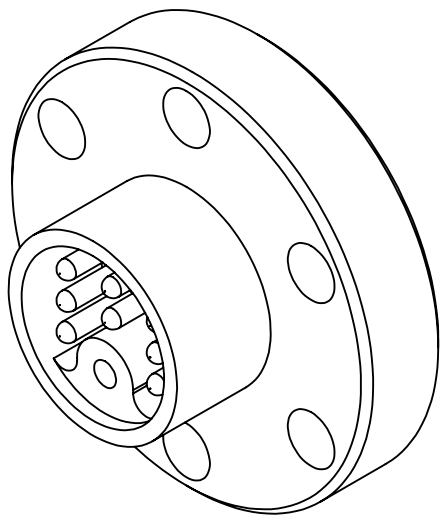


MPF PRODUCTS INC.



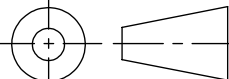

304 STAINLESS
STEEL FLANGE

PART NUMBER	Ø "A" DIM
A2140-1-CF	1.33
A2140-2-CF	2.75

SPECIFICATIONS:

- 1. VOLTAGE: 500 VOLTS DC
- 2. CURRENT: 5 AMPS PER PIN
- 3. TEMPERATURE RATING: -200 TO 450°C WITHOUT CONNECTOR
- 4. LEAK RATE < 1X10-9 ATM CC/SEC HE

Subminiature C-type Multipin Feedthrough, 9 Pins, 500 Volts, 5 Amps per Pin

UNLESS OTHERWISE SPECIFIED:		QUOTATION #		N/A	
DIMENSIONS ARE IN INCHES TOLERANCES: ANGULAR: MACH ± 1/2° TWO PLACE DECIMAL ± .030 THREE PLACE DECIMAL ± .015			NAME	DATE	MPF PRODUCTS INC. TITLE: MULTIPIN, TYPE-C, 500V, 5A, 9 PINS, 133CF DOWNLOADED FROM MPFPI.COM DWG. NO. A2140 REV
		DRAWN	WJ	9/11/2015	
		CHECKED		9/11/2015	
		ENG APPR.	WJ	9/11/2015	
MATERIAL		THIRD ANGLE: 			
		APPLICATION			
		NEXT ASSY			USED ON
FINISH		SURFACE FINISH:  63 OR BETTER			
PLATING		UNLESS OTHERWISE SPECIFIED: ALL DIAMETERS CONCENTRIC WITHIN .005. REMOVE ALL BURRS AND SHARP EDGES			
					Tuesday, April 20, 2021 1:19:59 PM