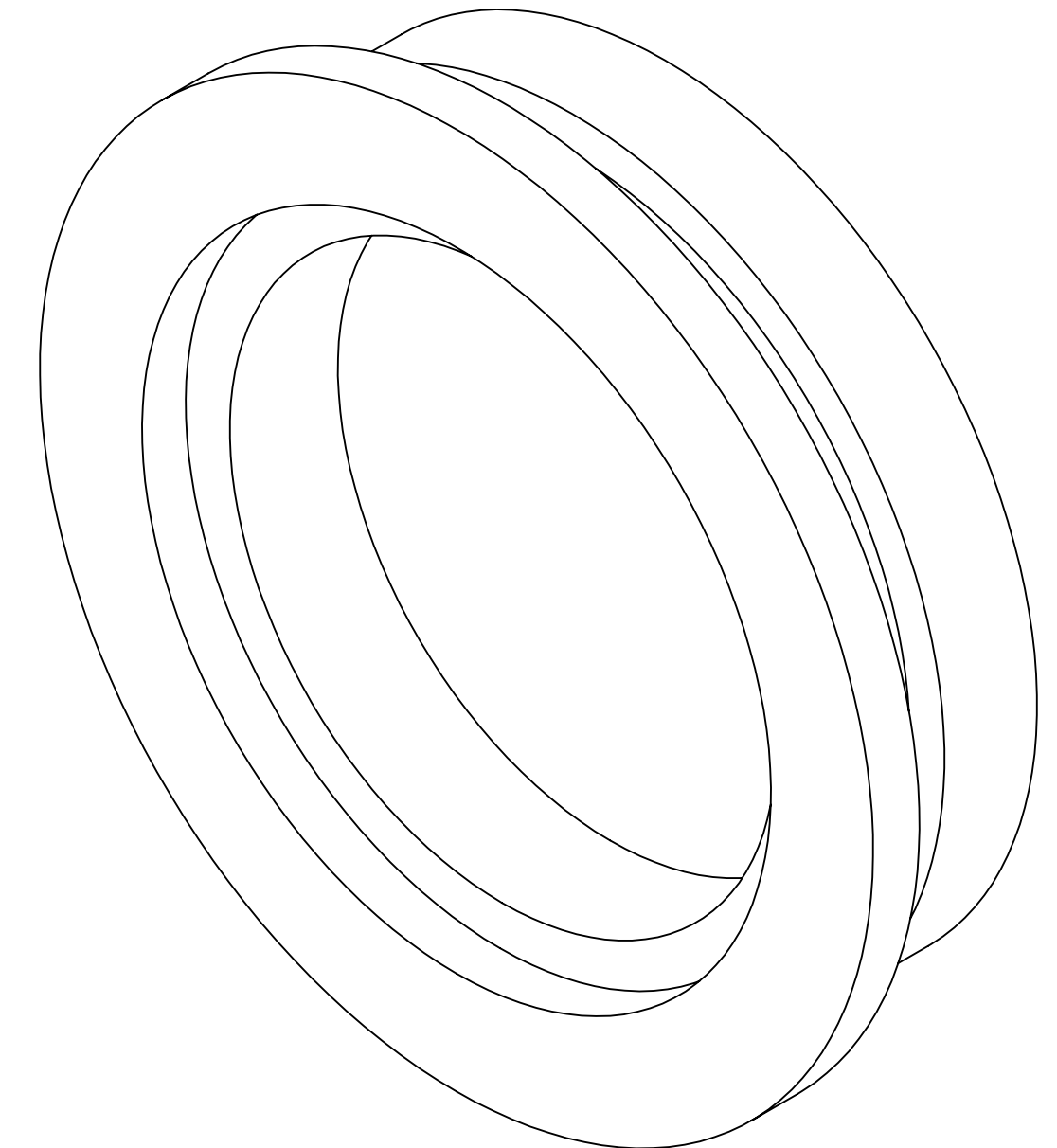
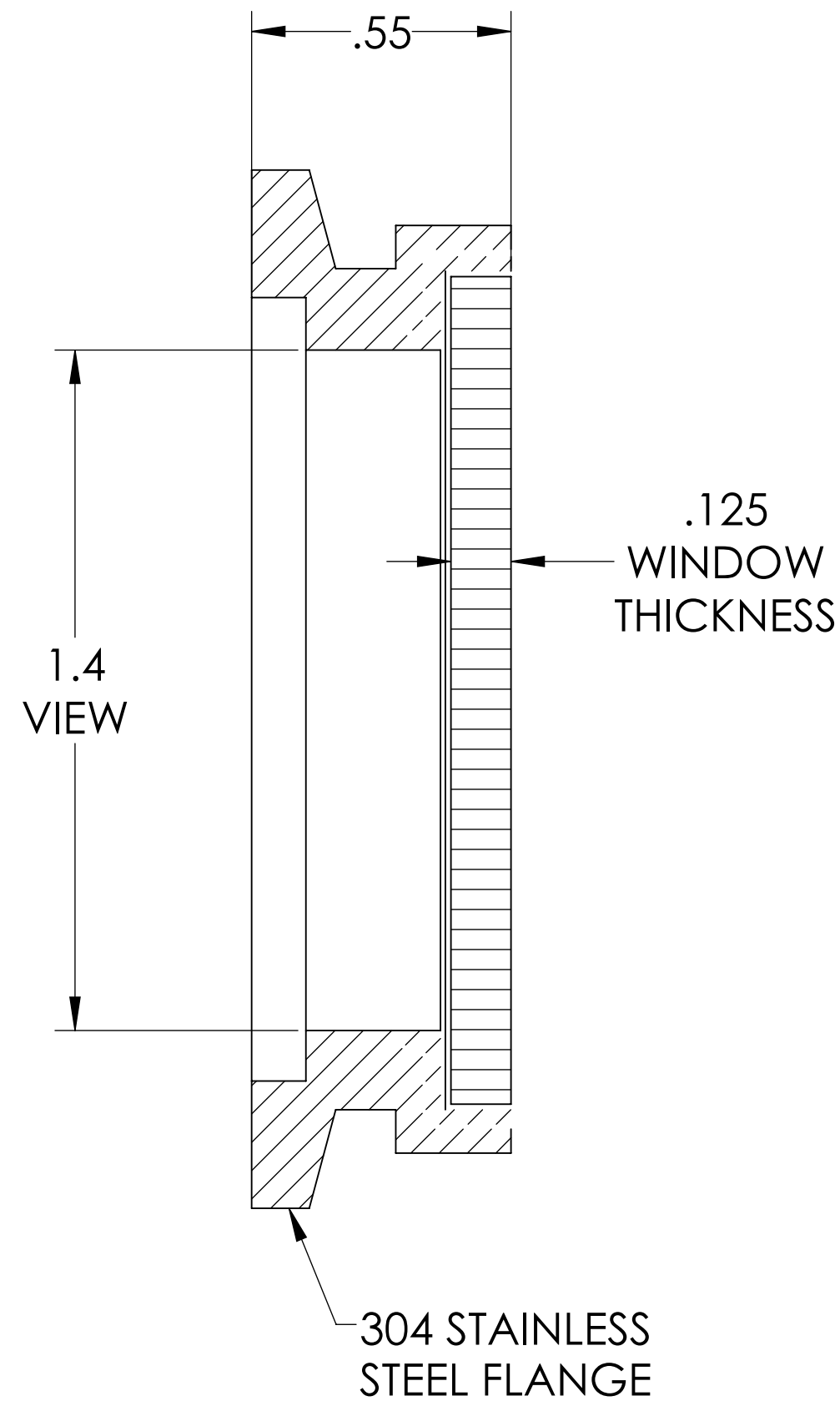
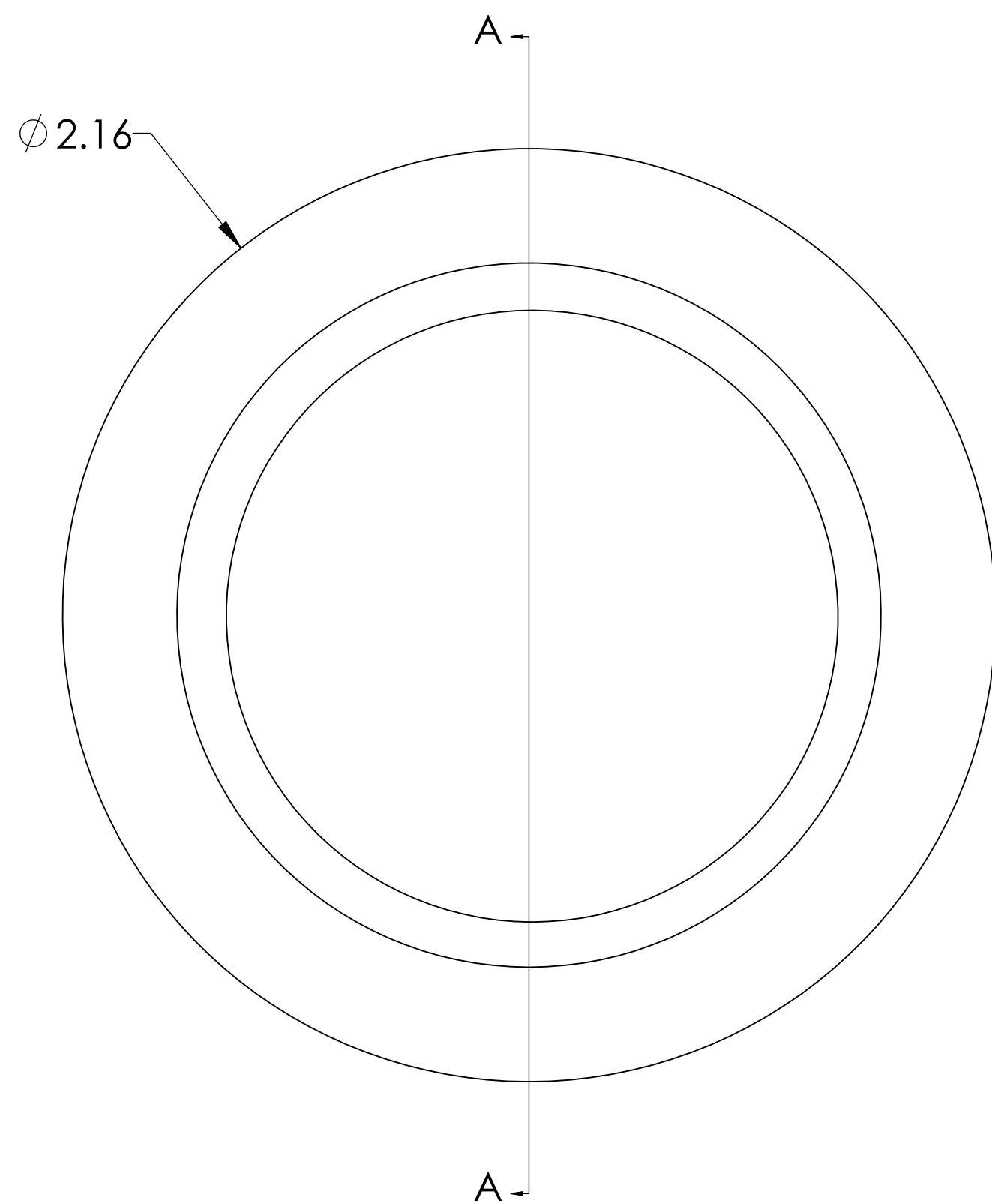


MPF PRODUCTS INC.



SPECIFICATIONS:

1. MATERIAL: CORNING HPFS 7980 FUSED SILICA OR EQUIVALENT
2. TWD < $\lambda/4$ @ 632NM (PEAK TO VALLEY)
3. PARALLELISM < 10 ARC SECONDS
4. SURFACE FINISH: 20/10 SCRATCH-DIG
5. THERMAL RANGE: -100 °C TO 200 °C
6. HOMOGENEITY GRADE: A
7. INCLUSION CLASS: 0
8. LEAK RATE < 1 X 10⁻⁹ ATM-CC/SEC HE

Laser Grade Fused Silica Viewport, 1.40" View Dia, 2.16" QF/KF

UNLESS OTHERWISE SPECIFIED:		QUOTATION #		N/A	
DIMENSIONS ARE IN INCHES TOLERANCES:		DRAWN	WJ	DATE	9/11/2015
ANGULAR: MACH ± 1/2°		CHECKED		9/11/2015	TITLE: VIEWPORT, FUSED SILICA, LASER GRADE, 1.4" VIEW, QF/KF 40
TWO PLACE DECIMAL ± .030		ENG APPR.	WJ	9/11/2015	
THREE PLACE DECIMAL ± .015		THIRD ANGLE:			
MATERIAL		APPLICATION			
FINISH		NEXT ASSY		USED ON	
PLATING		SURFACE FINISH:		63 OR BETTER	
UNLESS OTHERWISE SPECIFIED:		ALL DIAMETERS CONCENTRIC WITHIN .005.		REMOVE ALL BURRS AND SHARP EDGES	
DOWNLOADED FROM MPFPI.COM		DWG. NO.		REV	
A2206-2-QF		Thursday, January 24, 2019 11:15:01 AM			