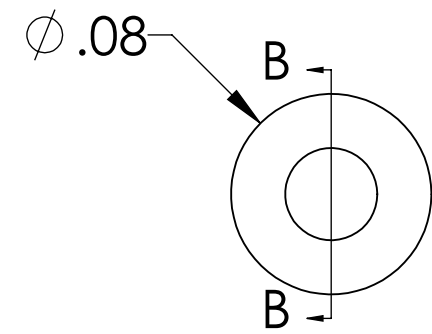
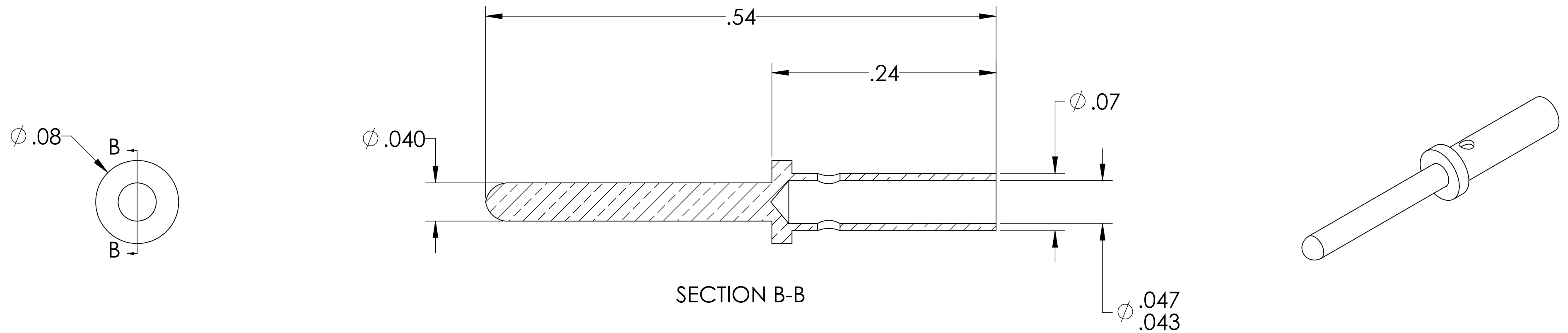


# MPF PRODUCTS INC.



SPECIFICATIONS:  
1. GOLD PLATED

Subminiature C/D-type Contacts, Male Pins, Package of 10

UNLESS OTHERWISE SPECIFIED:		QUOTATION #		N/A	
DIMENSIONS ARE IN INCHES TOLERANCES:		NAME	DATE	MPF PRODUCTS INC.	
ANGULAR: MACH ± 1/2°		DRAWN	9/11/2015		
TWO PLACE DECIMAL ± .030		CHECKED	9/11/2015		
THREE PLACE DECIMAL ± .015		ENG APPR.	WJ 9/11/2015	TITLE:	
MATERIAL		THIRD ANGLE:		CONTACTS, TYPE-C/D, MALE	
		APPLICATION		DOWNLOADED FROM MPFPI.COM	
		NEXT ASSY	USED ON	DWG. NO.	
FINISH		SURFACE FINISH: 63/ OR BETTER		A2385-1-CN	
PLATING		UNLESS OTHERWISE SPECIFIED:		REV	
		ALL DIAMETERS CONCENTRIC WITHIN .005. REMOVE ALL BURRS AND SHARP EDGES		Wednesday, August 19, 2020 3:58:48 PM	