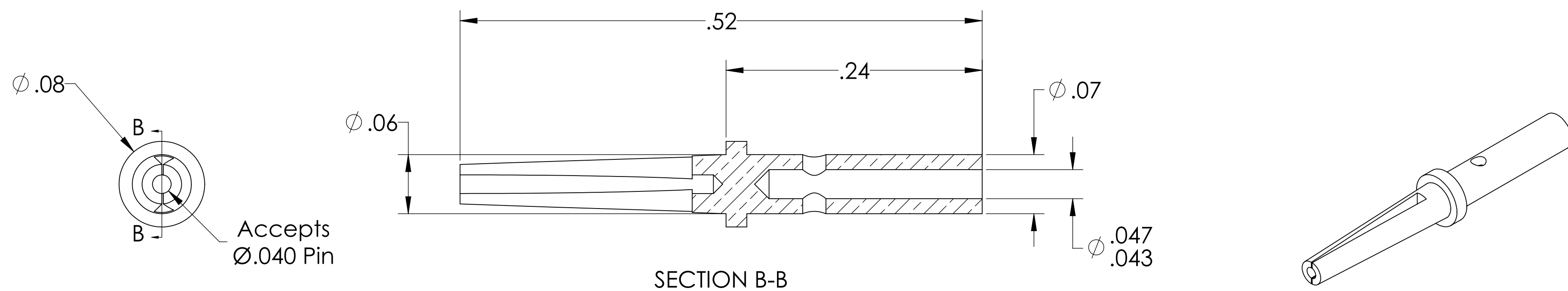


MPF PRODUCTS INC.



SPECIFICATIONS:
1. GOLD PLATED

Subminiature C/D-type Contacts, Female Pins, Package of 10

UNLESS OTHERWISE SPECIFIED:	QUOTATION #		N/A
DIMENSIONS ARE IN INCHES TOLERANCES:	NAME	DATE	MPF PRODUCTS INC.
ANGULAR: MACH ± 1/2°	DRAWN	9/11/2015	
TWO PLACE DECIMAL ± .030	CHECKED	9/11/2015	
THREE PLACE DECIMAL ± .015	ENG APPR.	9/11/2015	
MATERIAL	THIRD ANGLE:		CONTACTS, TYPE-C/D, FEMALE
	APPLICATION		
	NEXT ASSY	USED ON	DOWNLOADED FROM MPFPI.COM
FINISH	SURFACE FINISH: 63 OR BETTER		DWG. NO.
PLATING	UNLESS OTHERWISE SPECIFIED: ALL DIAMETERS CONCENTRIC WITHIN .005. REMOVE ALL BURRS AND SHARP EDGES		A2386-1-CN
	Wednesday, August 19, 2020 4:03:33 PM		REV