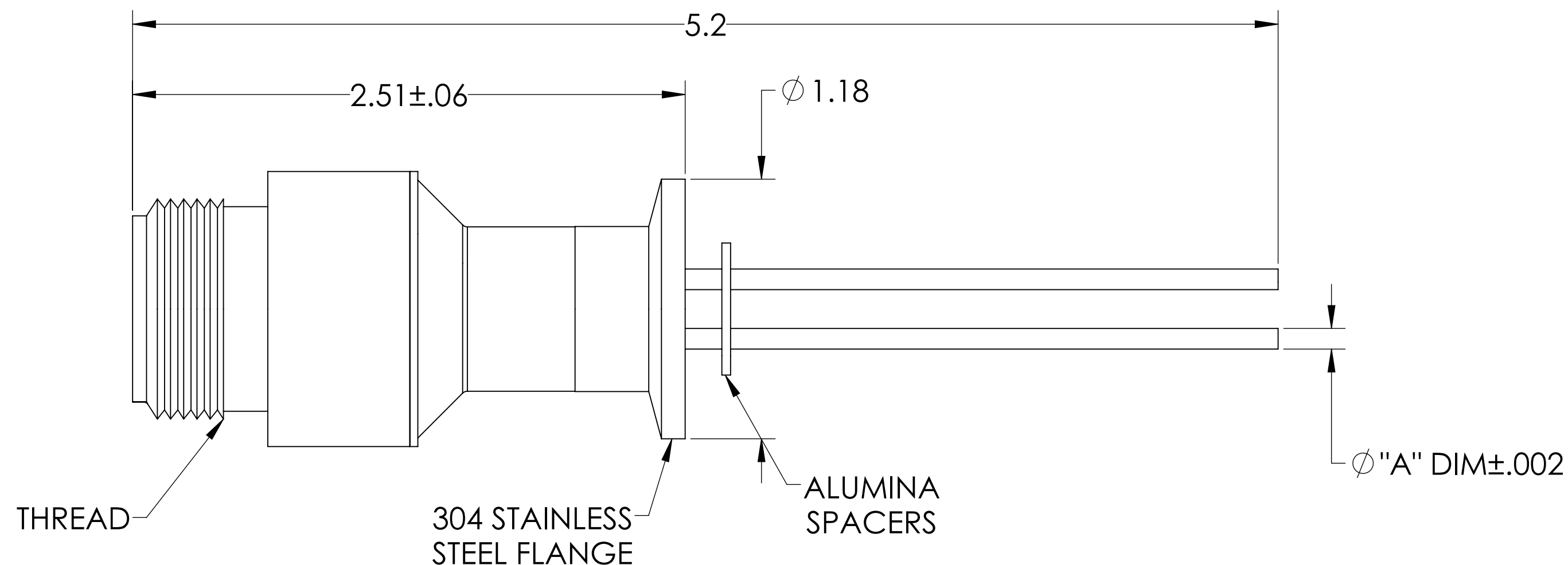
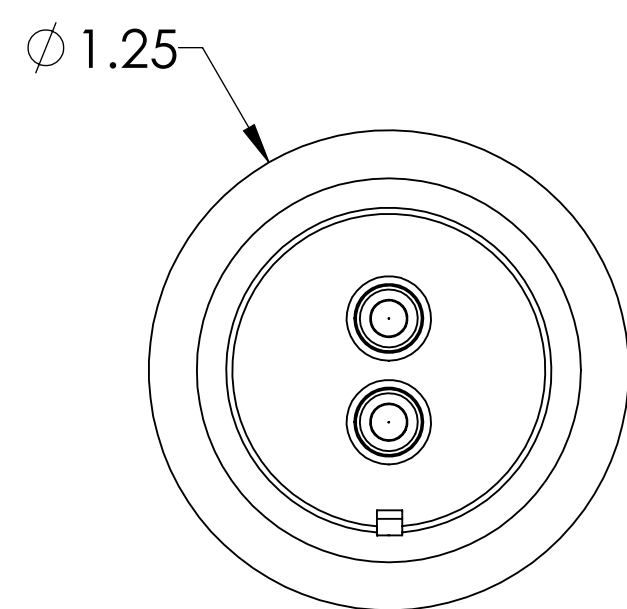
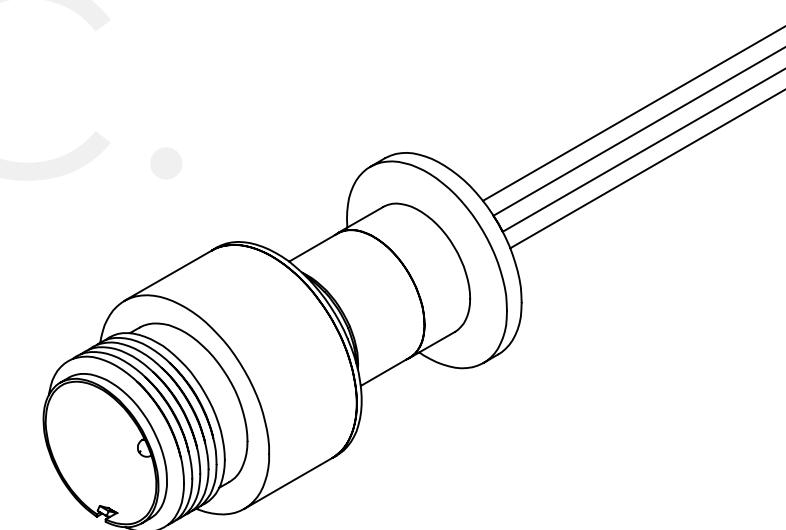
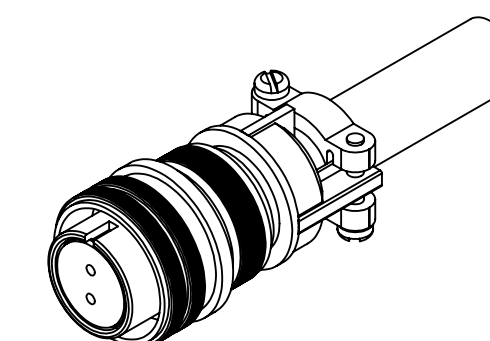


MPF PRODUCTS INC.



PART #	NUMBER OF PINS	"A" DIM	CONDUCTOR MATERIAL	CURRENT RATINGS PER PIN	THREAD
A2567-1-QF	2	.092	NICKEL 200	16 AMPS	1"-20
A2567-3-QF	2	.094	MOLYBDENUM	28 AMPS	1"-20
A2567-5-QF	4	.092	NICKEL 200	16 AMPS	1-1/8"-18
A2567-7-QF	4	.094	MOLYBDENUM	28 AMPS	1-1/8"-18



SPECIFICATIONS:

1. VOLTAGE: 700 VOLTS DC
2. CURRENT: SEE TABLE
3. TEMPERATURE RATING: -100 TO 450°C WITHOUT CONNECTOR
4. LEAK RATE < 1X10-9 ATM CC/SEC HE

MS Series, Multipin Feedthrough w/ Air-side Connector, 700 Volts, 1.18" QF/KF

UNLESS OTHERWISE SPECIFIED:		QUOTATION #		N/A	
DIMENSIONS ARE IN INCHES TOLERANCES:		NAME	DATE	MPF PRODUCTS INC.	
ANGULAR: MACH ± 1/2°		DRAWN	9/11/2015		
TWO PLACE DECIMAL ± .030		CHECKED	9/11/2015		
THREE PLACE DECIMAL ± .015		ENG APPR.	9/11/2015		
THIRD ANGLE:				TITLE:	
MATERIAL		APPLICATION		MULTIPIN, 700V, 1.18" QF/KF	
FINISH		NEXT ASSY	USED ON	DOWNLOADED FROM MPFPI.COM	
PLATING		SURFACE FINISH: 63/ OR BETTER		DWG. NO.	REV
		UNLESS OTHERWISE SPECIFIED:		A2567	
		ALL DIAMETERS CONCENTRIC WITHIN .005. REMOVE ALL BURRS AND SHARP EDGES		Tuesday, January 29, 2019 12:50:16 PM	