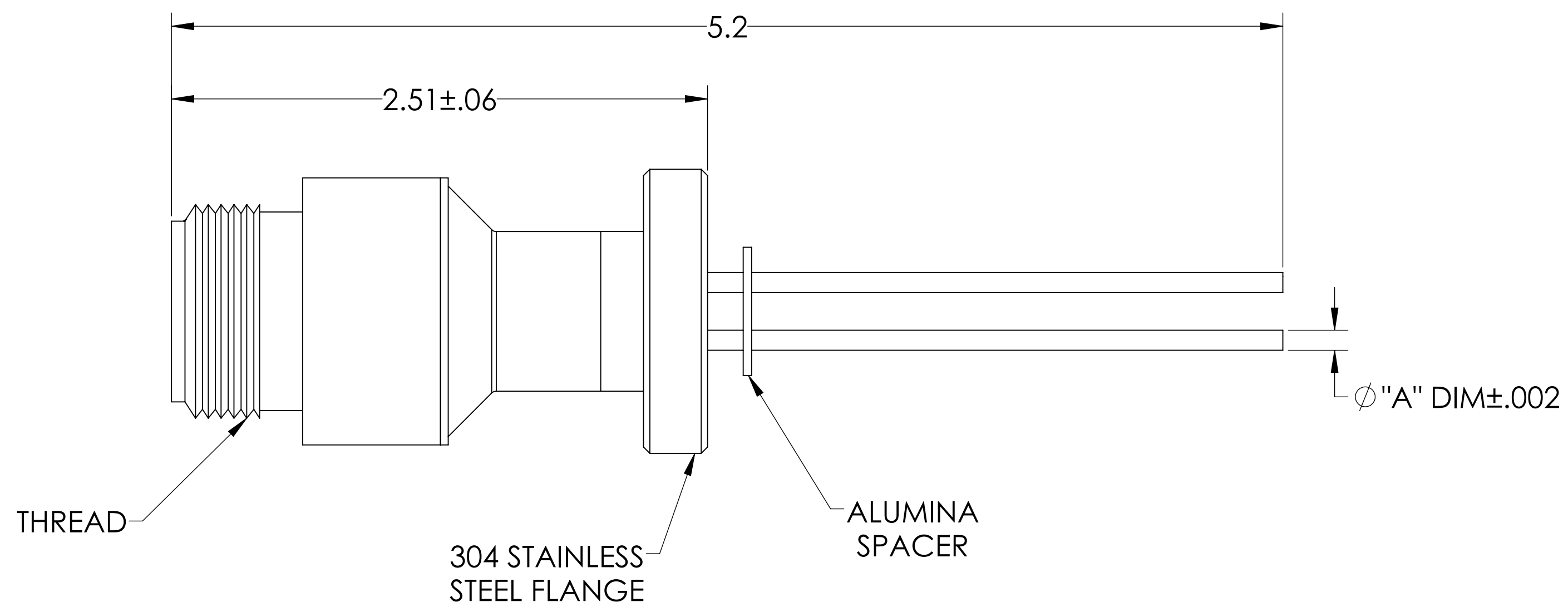
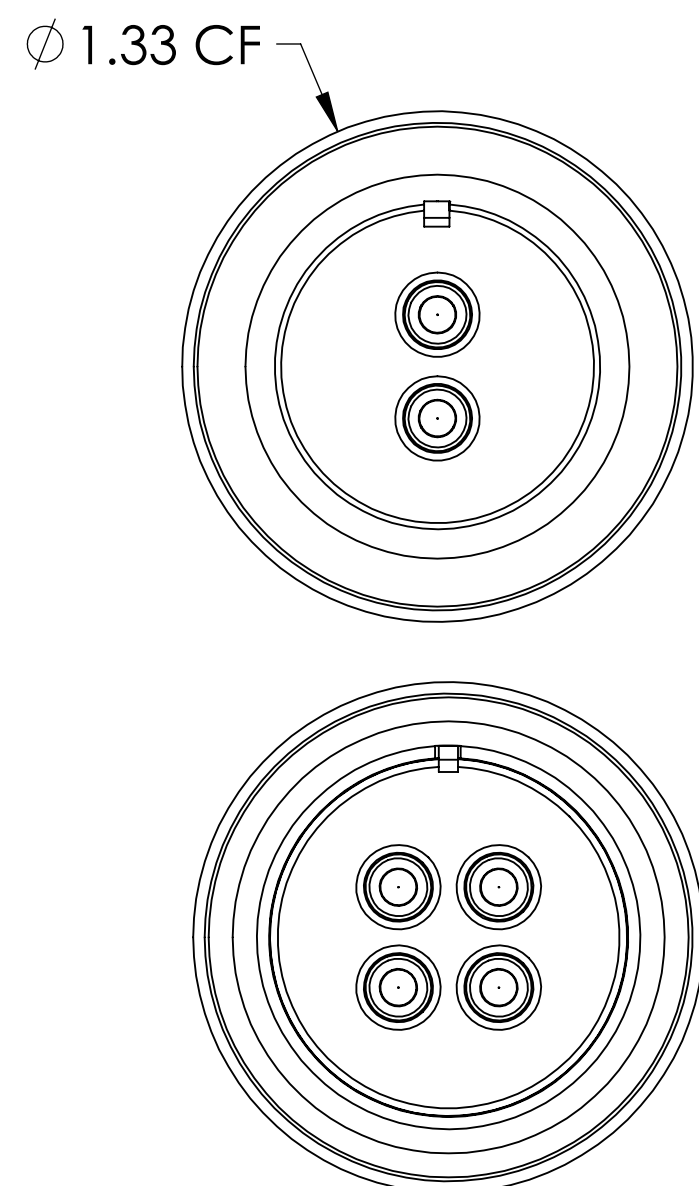
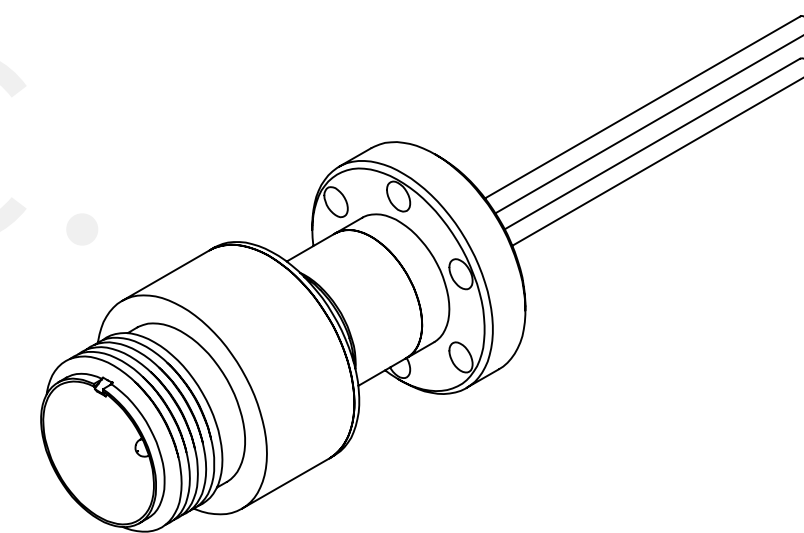
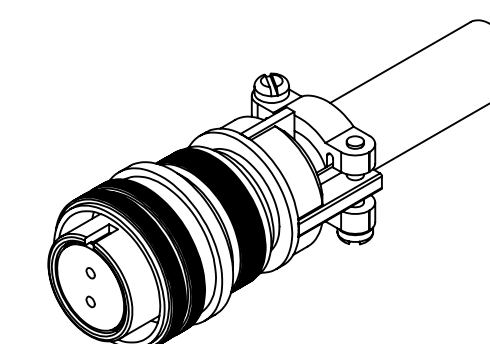


# MPF PRODUCTS INC.



PART #	NUMBER OF PINS	"A" DIM	CONDUCTOR MATERIAL	CURRENT RATINGS PER PIN	THREAD	IMAGE
A2568-1-CF	2	.092	NICKEL 200	16 AMPS	1"-20	1
A2568-3-CF	2	.094	MOLYBDENUM	28 AMPS	1"-20	1
A2568-5-CF	4	.092	NICKEL 200	16 AMPS	1-1/8"-18	2
A2568-7-CF	4	.094	MOLYBDENUM	28 AMPS	1-1/8"-18	2



**SPECIFICATIONS:**

1. VOLTAGE: 700 VOLTS DC
2. CURRENT: SEE TABLE
3. TEMPERATURE RATING: -100 TO 450°C WITHOUT CONNECTOR
4. LEAK RATE <math>< 1 \times 10^{-9}</math> ATM CC/SEC HE

MS Series, Multipin Feedthrough w/ Air-side Connector, 700 Volts, 1.33" Conflat Flange

UNLESS OTHERWISE SPECIFIED:	QUOTATION #	N/A	
DIMENSIONS ARE IN INCHES	DRAWN	NAME	DATE
TOLERANCES:	WJ	WJ	9/11/2015
ANGULAR: MACH $\pm 1/2^\circ$	CHECKED	WJ	9/11/2015
TWO PLACE DECIMAL $\pm .030$	ENG APPR.	WJ	9/11/2015
THREE PLACE DECIMAL $\pm .015$	THIRD ANGLE:		
MATERIAL			
FINISH	APPLICATION		
PLATING	NEXT ASSY USED ON		
	SURFACE FINISH: $\sqrt{63}$ OR BETTER		
	UNLESS OTHERWISE SPECIFIED:		
	ALL DIAMETERS CONCENTRIC WITHIN .005. REMOVE ALL BURRS AND SHARP EDGES		
	TITLE:		MPF PRODUCTS INC.
	MULTIPIN, 700V, 133CF		DOWNLOADED FROM MPFPI.COM
	DWG. NO.		A2568
	REV		
	Thursday, September 19, 2019 8:11:14 AM		