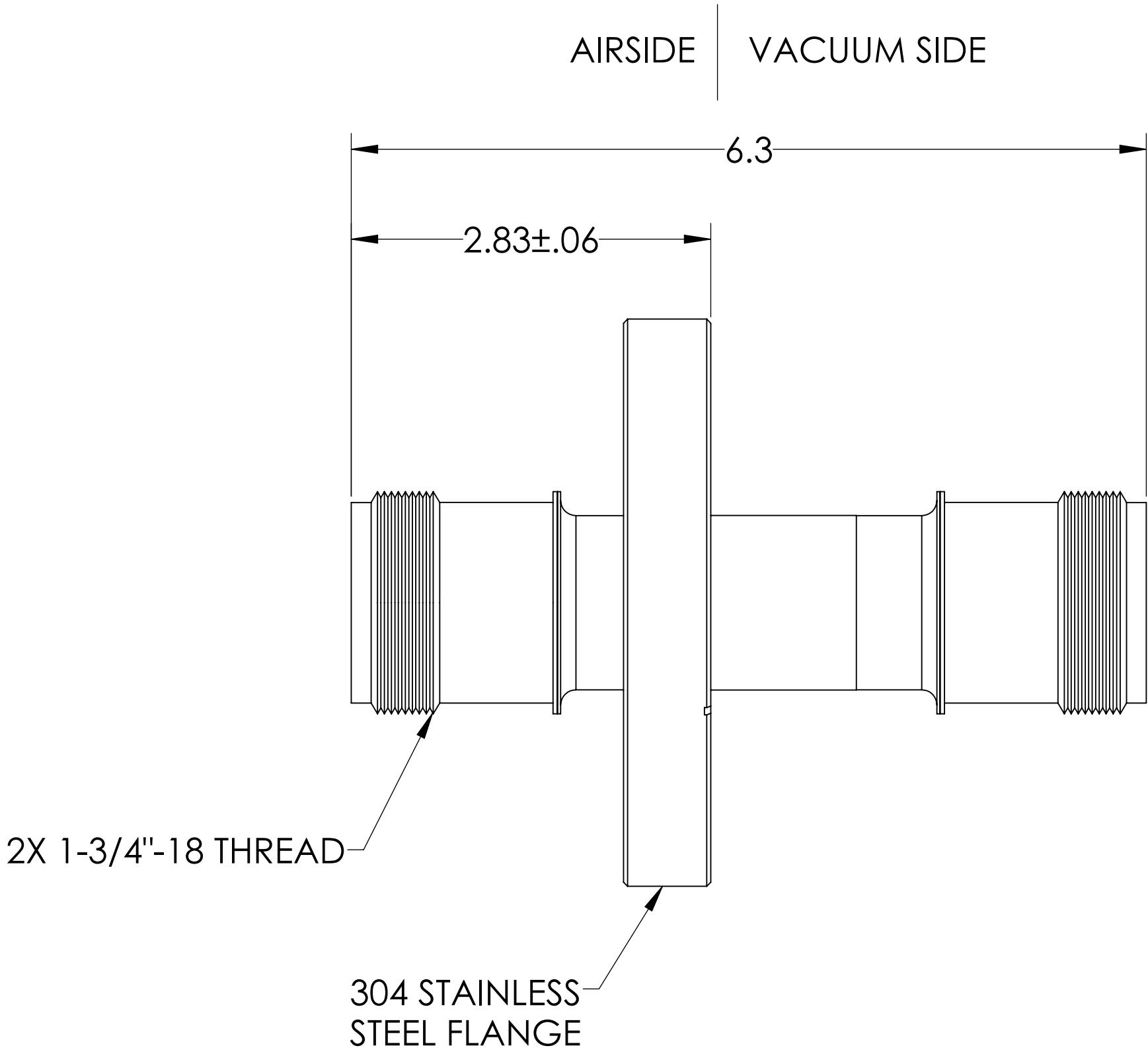
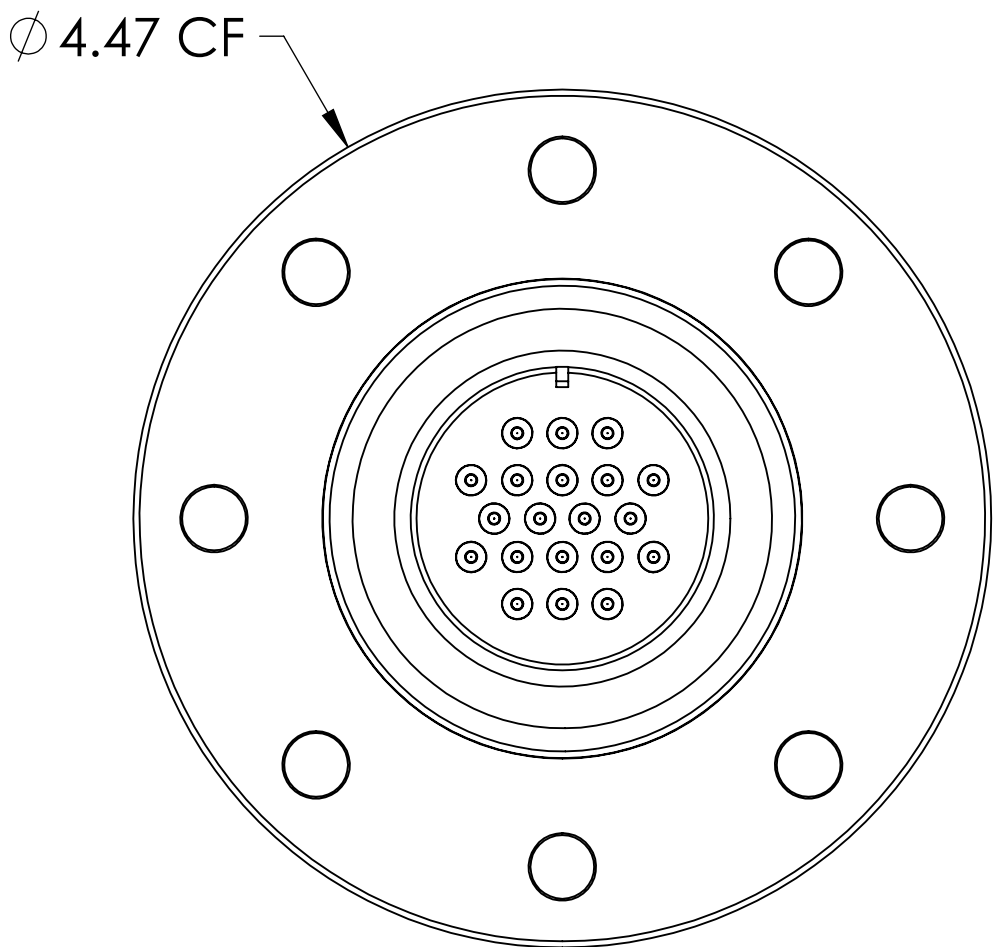
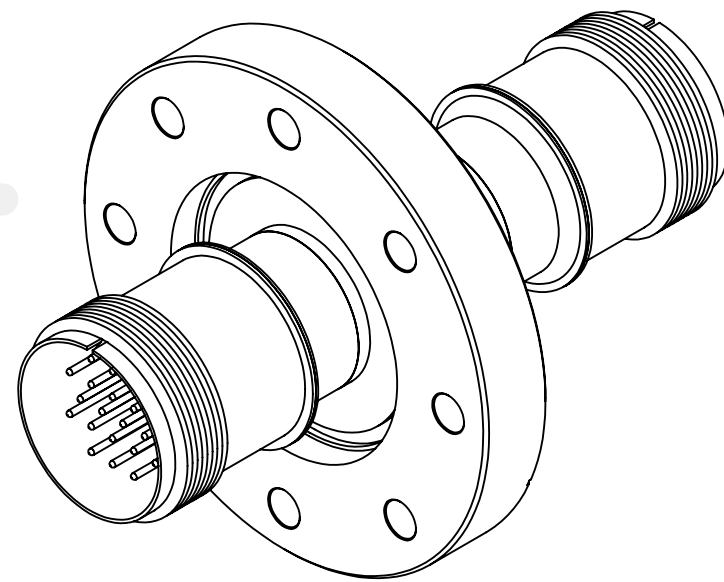
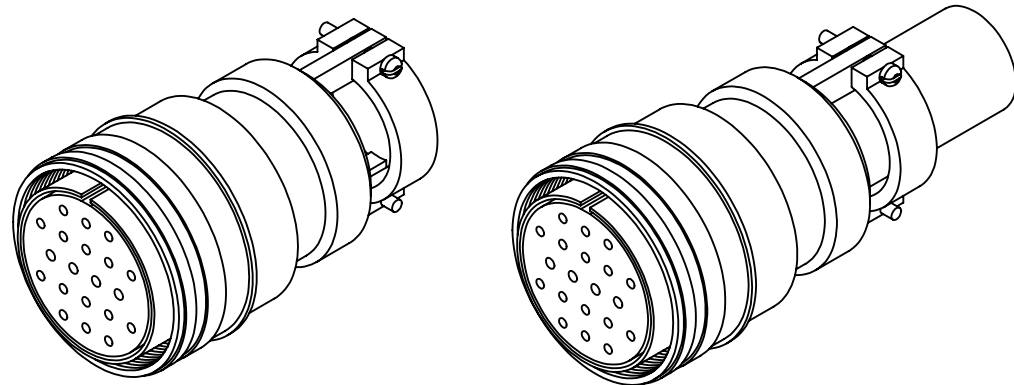


MPF PRODUCTS INC.



- SPECIFICATIONS:
- 1. VOLTAGE: 700 VOLTS DC
 - 2. CURRENT: 10 AMPS PER PIN, 75 AMPS FULL LOAD
 - 3. TEMPERATURE RATING: -100 TO 450°C WITHOUT CONNECTOR
 - 4. VACUUM SIDE CONNECTOR RATED FOR -100 TO 350 °C
 - 5. LEAK RATE < 1X10-9 ATM CC/SEC HE



MS Series, Multipin Feedthrough, 20 Pins, 700 Volts, 10 Amps per Pin, Double-Ended w/ Air & Vacuum-side Connectors, 4.47" Conflat Flange

| | | | |
|--|--|--|-----------|
| UNLESS OTHERWISE SPECIFIED: | | QUOTATION # | |
| DIMENSIONS ARE IN INCHES TOLERANCES: ANGULAR: MACH ± 1/2° TWO PLACE DECIMAL ± .030 THREE PLACE DECIMAL ± .015 MATERIAL FINISH PLATING | | NAME | DATE |
| | | DRAWN WJ | 9/11/2015 |
| | | CHECKED | 9/11/2015 |
| | | ENG APPR. WJ | 9/11/2015 |
| | | THIRD ANGLE: | |
| | | APPLICATION NEXT ASSY USED ON | |
| | | SURFACE FINISH: 63/ OR BETTER | |
| | | UNLESS OTHERWISE SPECIFIED: ALL DIAMETERS CONCENTRIC WITHIN .005. REMOVE ALL BURRS AND SHARP EDGES | |
| | | N/A | |
| | | MPF PRODUCTS INC. | |
| | | TITLE: MULTIPIN, 20 PINS, 700V, 10 A, DOUBLE ENDED, 450CF | |
| | | DOWNLOADED FROM MPFPI.COM | |
| | | DWG. NO. A2577-1-CF | REV |
| | | Thursday, February 7, 2019 8:50:09 AM | |