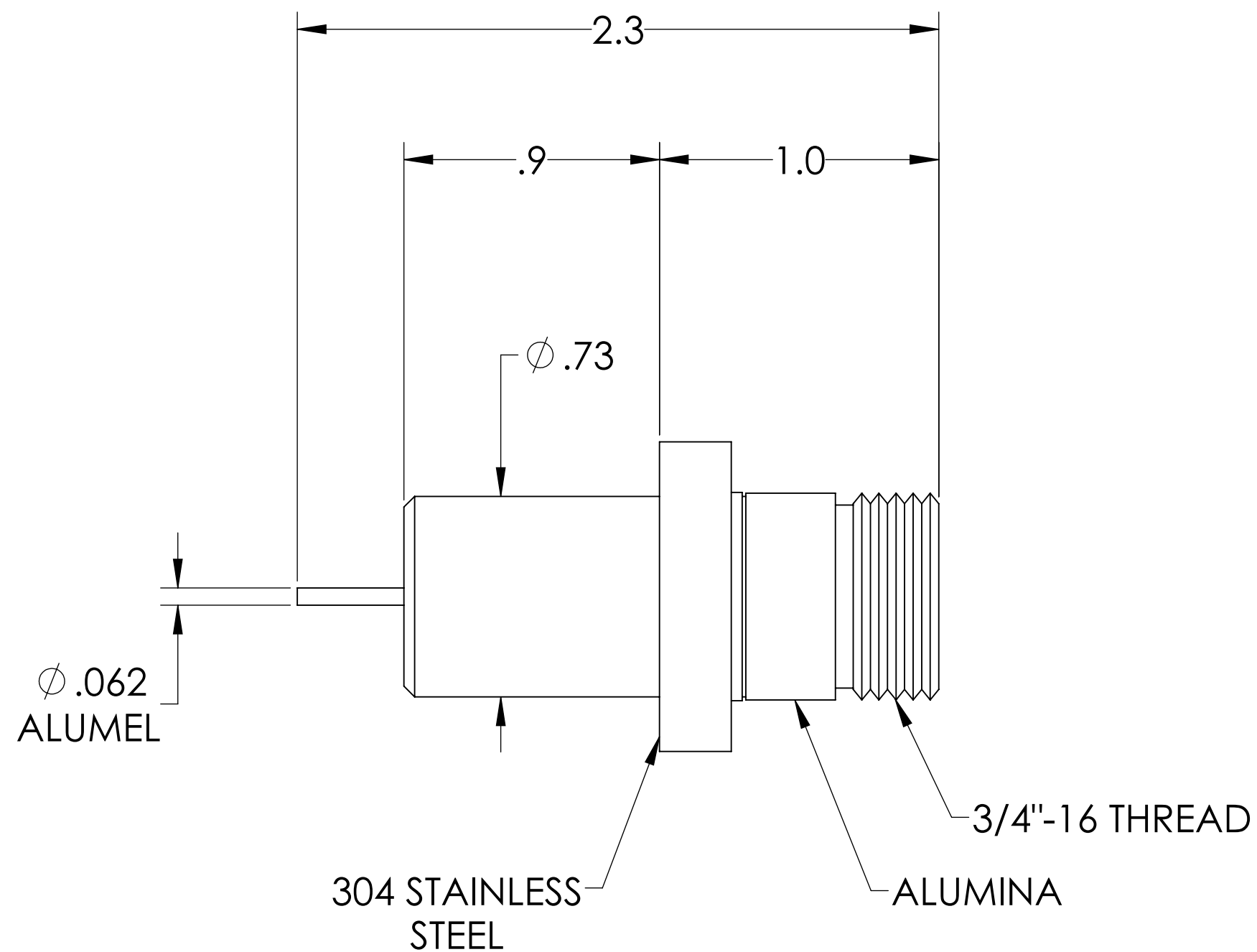
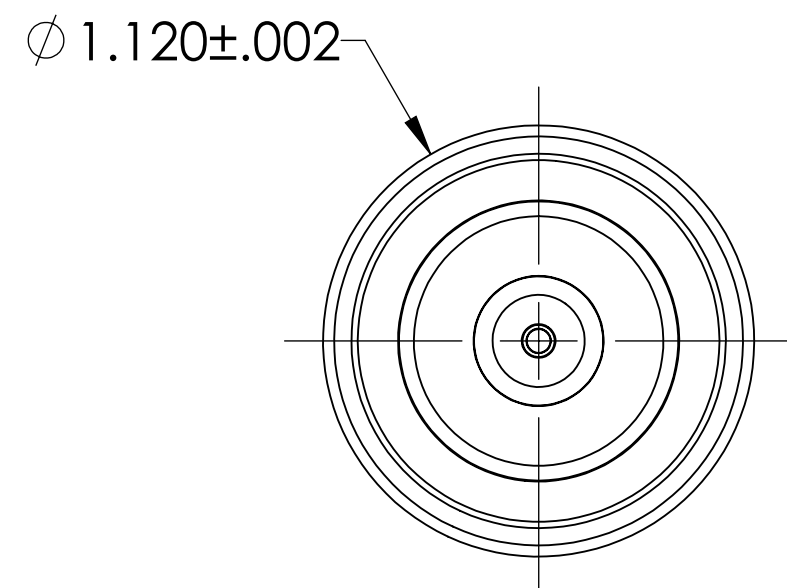
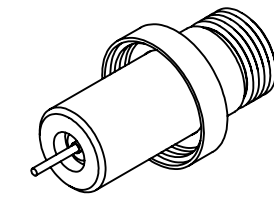
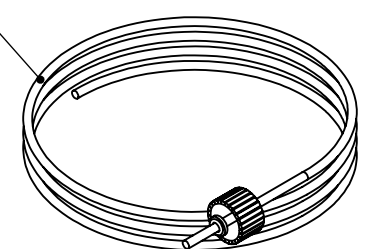


MPF PRODUCTS INC.



HVL CONNECTOR/CABLE



NOTE:

1. VOLTAGE: 40,000 VOLTS DC (WITH AIRSIDE PLUG)
2. CURRENT: 10 AMPS
3. TEMPERATURE RATING: -100 TO 450°C

Power Feedthrough W/ 8' HVL Connector/Cable, 40 KV, 1 Pin, 1.120" Dia. Stainless Steel Weld Adapter, UHV Rated, Bakeable to 450°C

UNLESS OTHERWISE SPECIFIED:	QUOTATION #	N/A	
DIMENSIONS ARE IN INCHES TOLERANCES:	DRAWN	NAME	DATE
ANGULAR: MACH $\pm 1/2^\circ$	WJ	WJ	9/11/2015
TWO PLACE DECIMAL $\pm .030$	CHECKED		9/11/2015
THREE PLACE DECIMAL $\pm .015$	ENG APPR.	WJ	9/11/2015
MATERIAL	THIRD ANGLE:		
	APPLICATION		
	NEXT ASSY	USED ON	
FINISH	SURFACE FINISH: $\sqrt{63}$ OR BETTER		
PLATING	UNLESS OTHERWISE SPECIFIED:		
	ALL DIAMETERS CONCENTRIC WITHIN .005. REMOVE ALL BURRS AND SHARP EDGES		
TITLE:		MPF PRODUCTS INC.	
POWER FEEDTHROUGH, 40 KV, 1 PIN, 1.120" WELD ADAPTER		DWG. NO. A2607-1-W	
DOWNLOADED FROM MPFPI.COM		REV	
Tuesdays, October 22, 2019 11:36:00 AM			