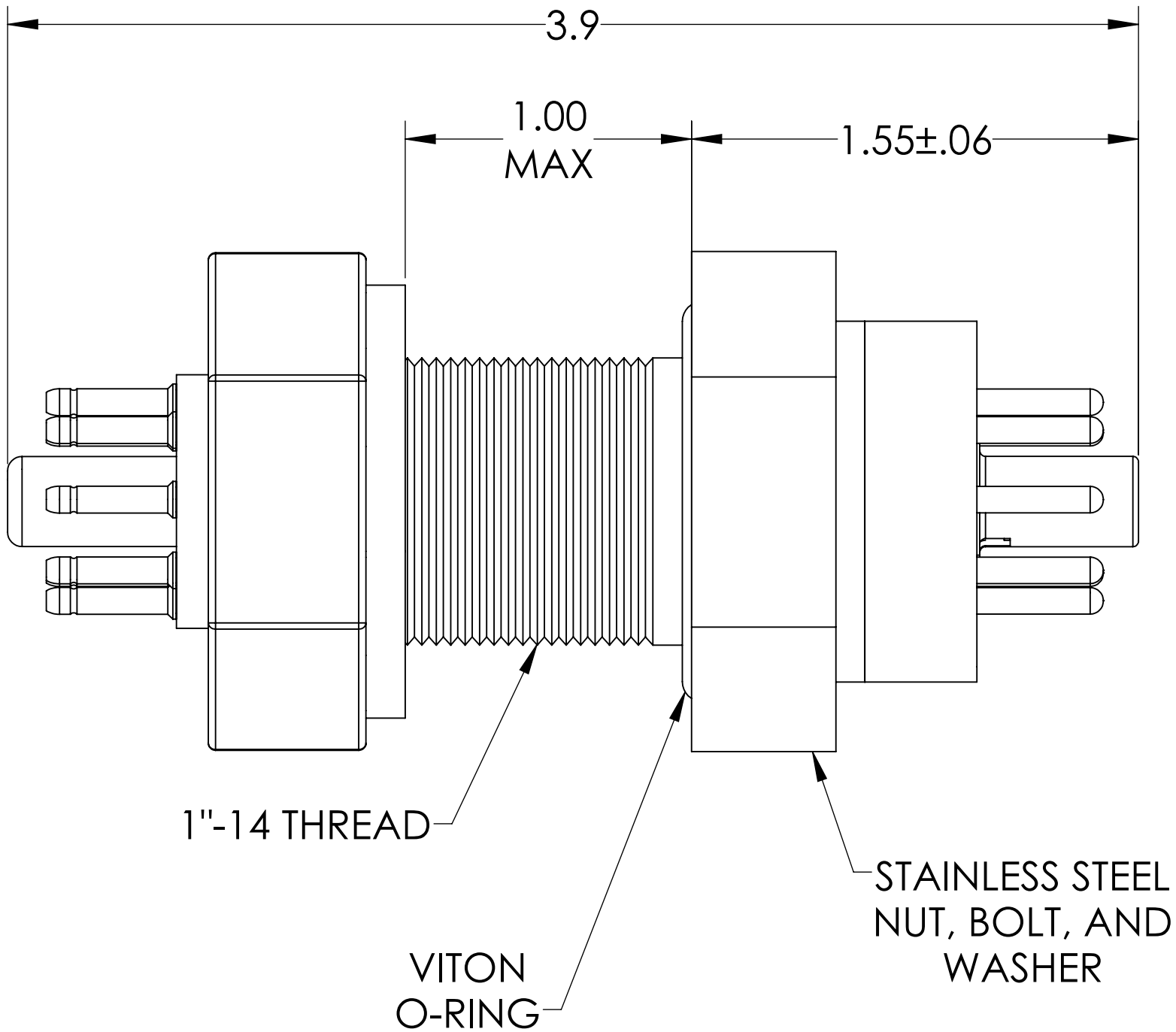
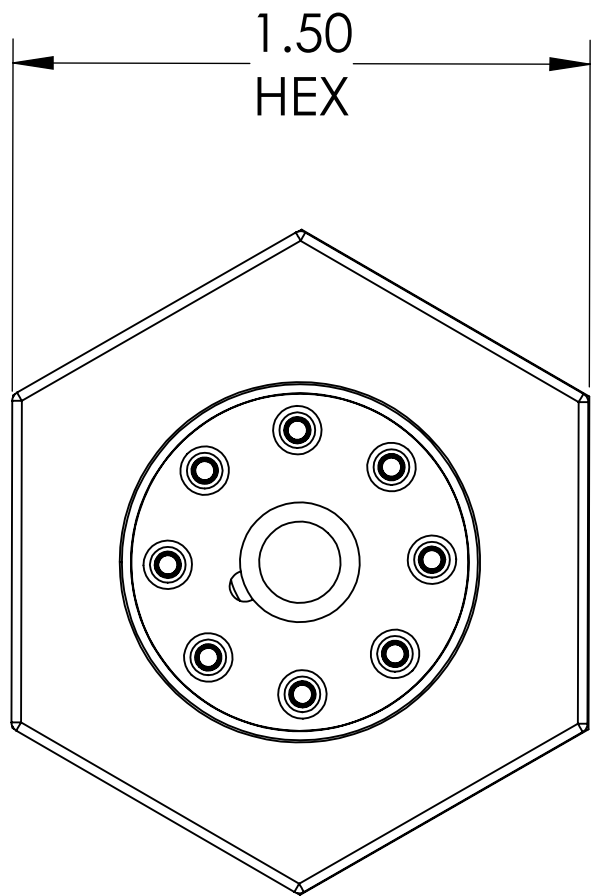
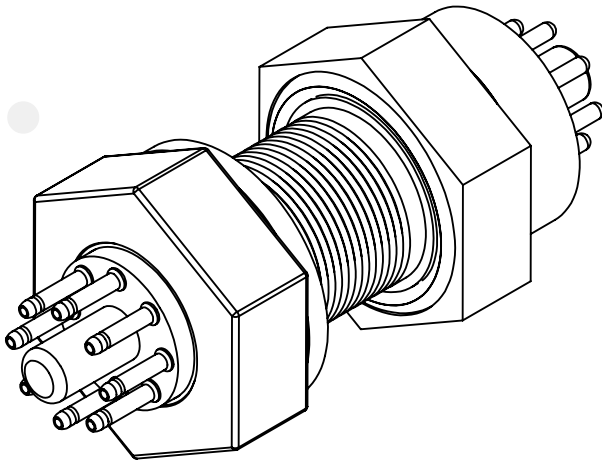


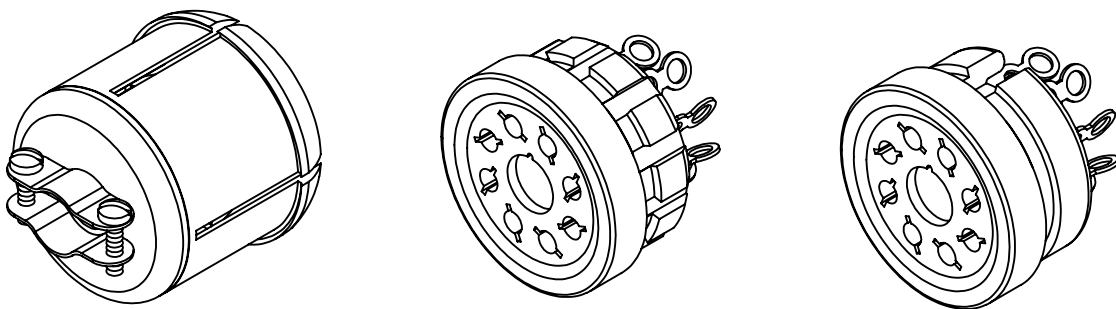
MPF PRODUCTS INC.



SPECIFICATIONS:

- 1. VOLTAGE: 1000 VOLTS DC
- 2. CURRENT: 5 AMPS PER PIN, 50 AMPS FULL LOAD
- 3. TEMPERATURE RATING: -100 TO 450°C WITHOUT CONNECTOR
- 4. LEAK RATE < 1X10-9 ATM CC/SEC HE

Multipin Feedthrough, 8 Pin 'Octal' Design, 1000 Volts, 5 Amps per Pin, Double-Ended w/ Air & Vacuum-side Connectors, 1.0" Baseplate Bolt



UNLESS OTHERWISE SPECIFIED:  DIMENSIONS ARE IN INCHES TOLERANCES:  ANGULAR: MACH ± 1/2° TWO PLACE DECIMAL ± .030 THREE PLACE DECIMAL ± .015  MATERIAL   FINISH  PLATING	QUOTATION #			TITLE:  MULTIPIN, 8 PINS, 'OCTAL', 1000V, 5A, 1" BASEPLATE BOLT  DOWNLOADED FROM MPFPI.COM DWG. NO. A3533-1-BP REV.
	NAME	DATE	N/A	
	DRAWN WJ	9/11/2015		
	CHECKED	9/11/2015		
	ENG APPR. WJ	9/11/2015		
	THIRD ANGLE:			
	APPLICATION			
	NEXT ASSY	USED ON		
	SURFACE FINISH:		63/ OR BETTER	
	UNLESS OTHERWISE SPECIFIED:			
	ALL DIAMETERS CONCENTRIC WITHIN .005. REMOVE ALL BURRS AND SHARP EDGES			