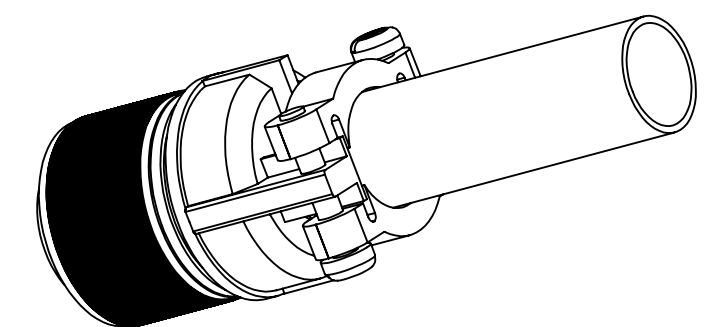
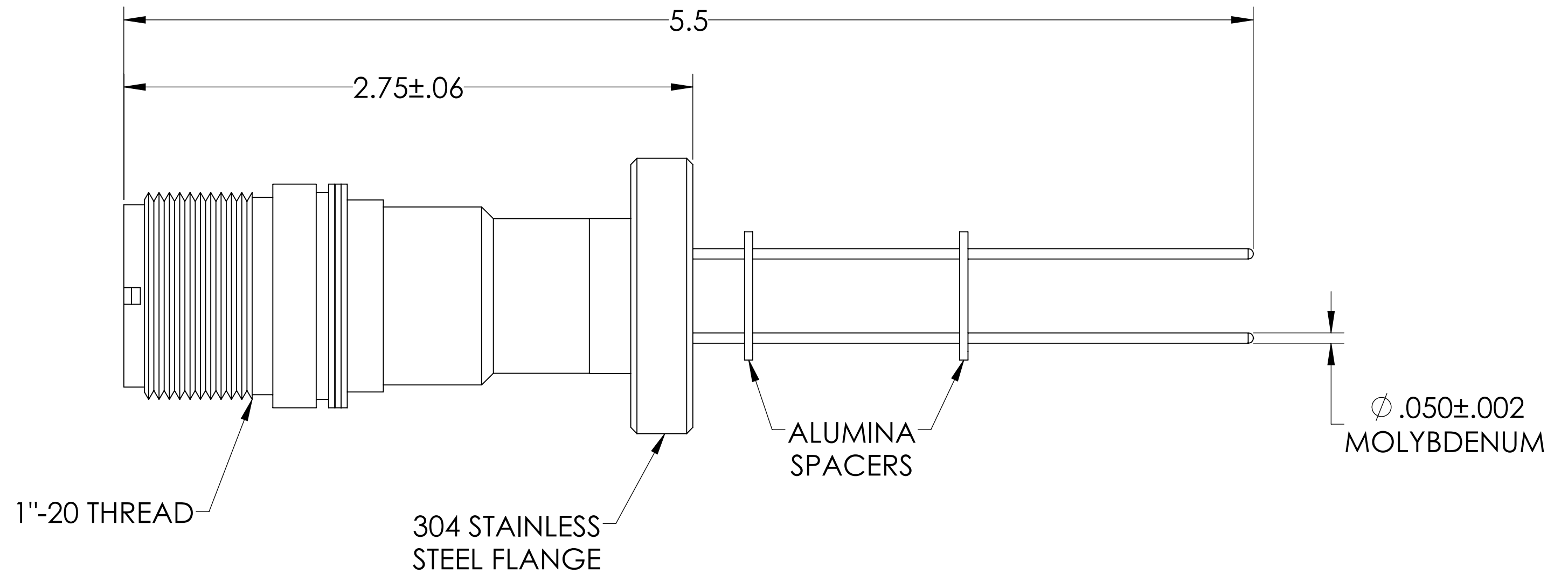
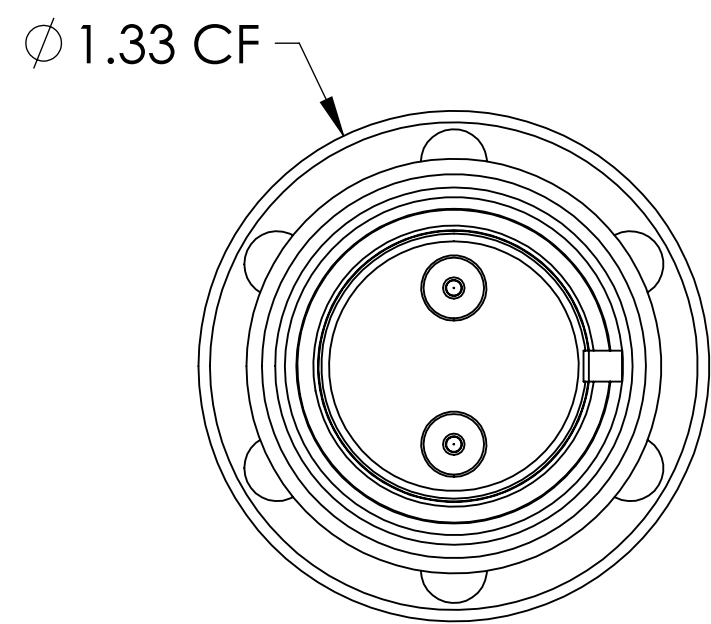
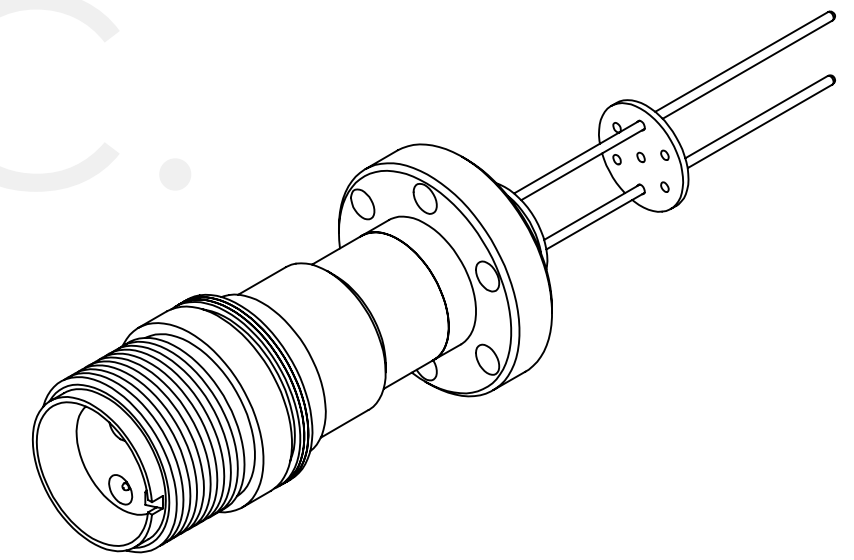


MPF PRODUCTS INC.



SPECIFICATIONS:

1. VOLTAGE: 12,000 VOLTS DC
2. CURRENT: 7.5 AMPS PER PIN
3. TEMPERATURE RATING: -100 TO 450°C WITHOUT CONNECTOR
4. LEAK RATE < 1X10-9 ATM CC/SEC HE

MS Series, Multipin Feedthrough w/ Air-side Connector, 2 Pins, 12KV, 7.5 Amps per Pin, 0.05" Moly Conductors, 1.33" Conflat Flange

UNLESS OTHERWISE SPECIFIED:	QUOTATION #	N/A	
DIMENSIONS ARE IN INCHES TOLERANCES:	DRAWN	NAME	DATE
ANGULAR: MACH ± 1/2°	WJ	WJ	9/11/2015
TWO PLACE DECIMAL ± .030	CHECKED		9/11/2015
THREE PLACE DECIMAL ± .015	ENG APPR.	WJ	9/11/2015
MATERIAL	THIRD ANGLE:		
FINISH	APPLICATION		
PLATING	NEXT ASSY	USED ON	
	SURFACE FINISH:	63/	OR BETTER
	UNLESS OTHERWISE SPECIFIED:	ALL DIAMETERS CONCENTRIC WITHIN .005. REMOVE ALL BURRS AND SHARP EDGES	
	TITLE:		MPF PRODUCTS INC.
	MULTIPIN, 2 PINS, 12KV, 7.5 A, 133CF		DOWNLOADED FROM MPFPI.COM
	DWG. NO.	A3970-1-CF	REV
	Monday, January 28, 2019 3:01:34 PM		