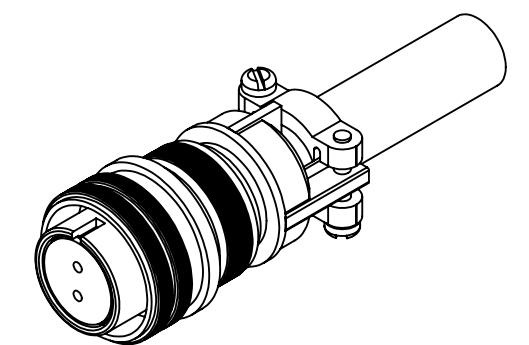
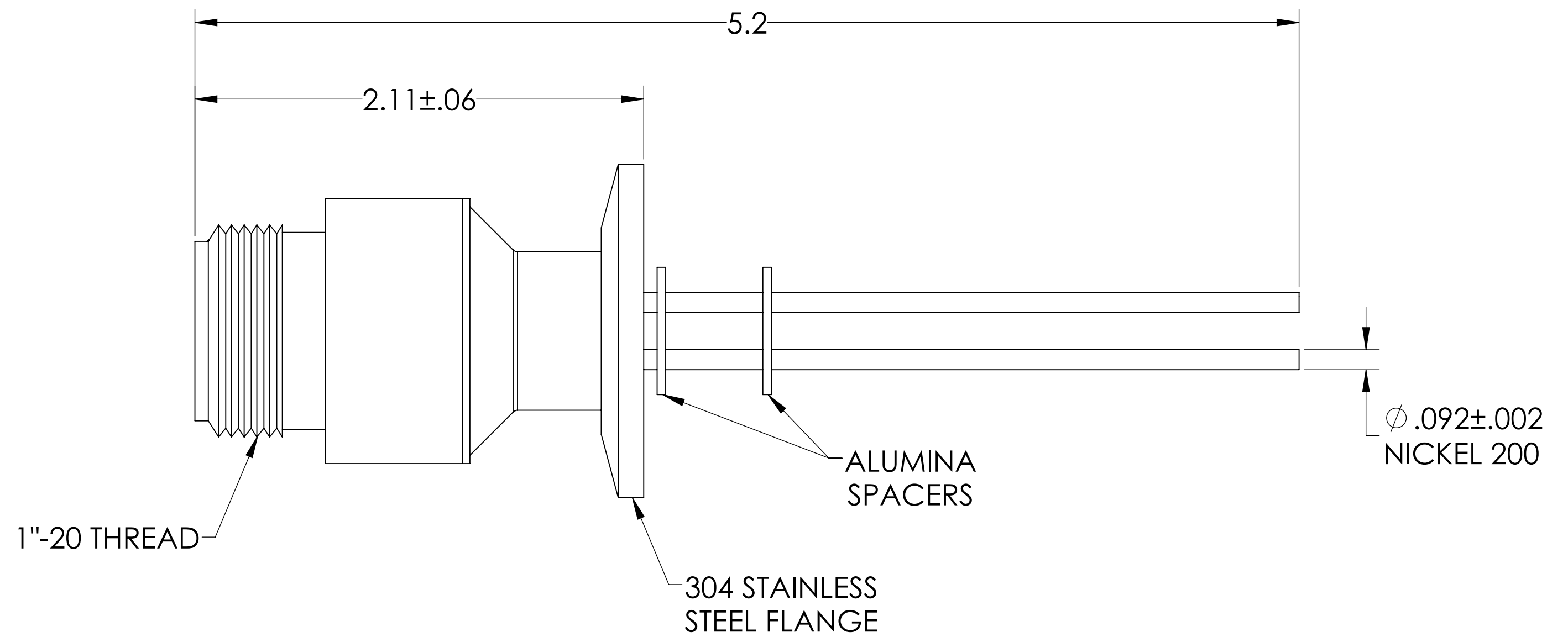
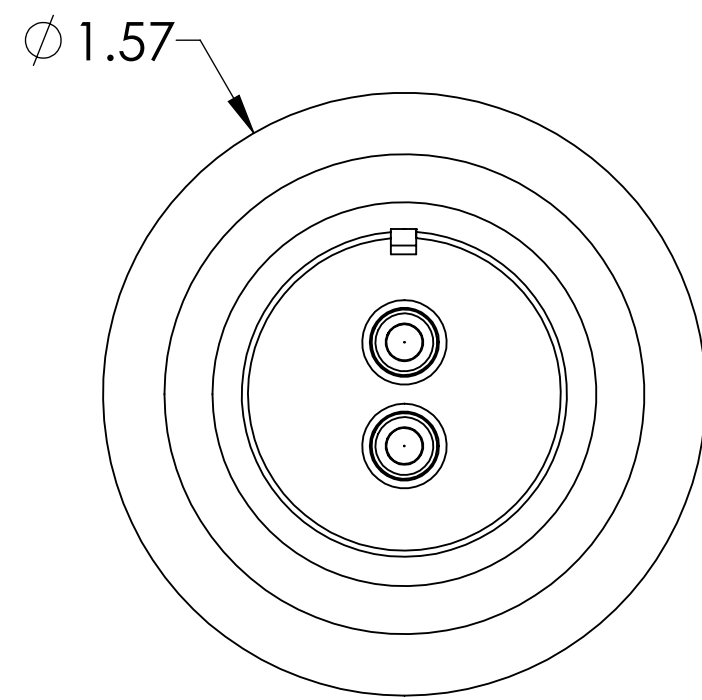
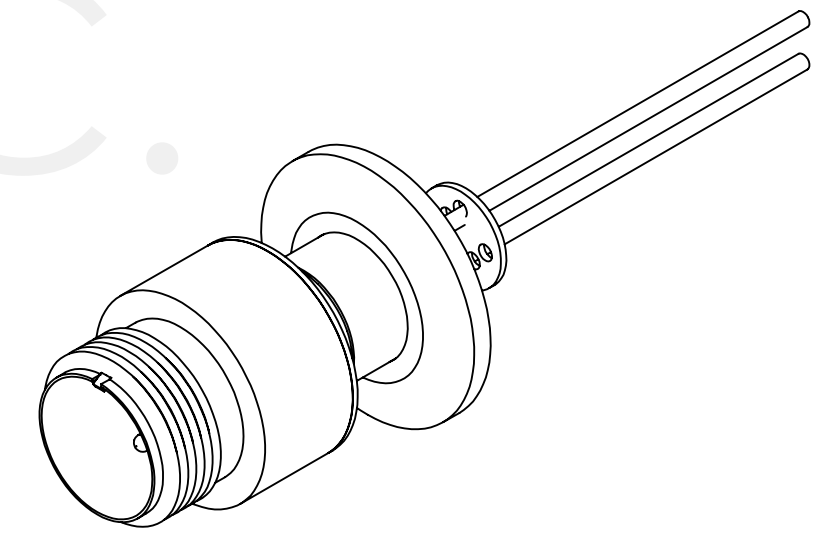


MPF PRODUCTS INC.



SPECIFICATIONS:

1. VOLTAGE: 700 VOLTS DC
2. CURRENT: 16 AMPS PER PIN
3. TEMPERATURE RATING: -100 TO 450°C WITHOUT CONNECTOR
4. LEAK RATE < 1X10-9 ATM CC/SEC HE

MS Series, Multipin Feedthrough w/ Air-side Connector, 2 Pins, 700 Volts, 16 Amps per Pin, 0.092" Nickel Conductors, 1.57" QF/KF

UNLESS OTHERWISE SPECIFIED:		QUOTATION #		N/A	
DIMENSIONS ARE IN INCHES		NAME	DATE	MPF PRODUCTS INC.	
TOLERANCES:		DRAWN	9/11/2015		
ANGULAR: MACH ± 1/2°		CHECKED	9/11/2015		
TWO PLACE DECIMAL ± .030		ENG APPR.	9/11/2015		
THREE PLACE DECIMAL ± .015		THIRD ANGLE:		TITLE:	
MATERIAL				MULTIPIN, 2 PINS, 700V, 16A, 1.57" QF/KF	
FINISH		APPLICATION		DOWNLOADED FROM MPFPI.COM	
PLATING		NEXT ASSY	USED ON	DWG. NO.	
		SURFACE FINISH: 63/ OR BETTER		A3991-1-QF	
		UNLESS OTHERWISE SPECIFIED:		REV	
		ALL DIAMETERS CONCENTRIC WITHIN .005. REMOVE ALL BURRS AND SHARP EDGES		Monday, January 28, 2019 3:19:25 PM	