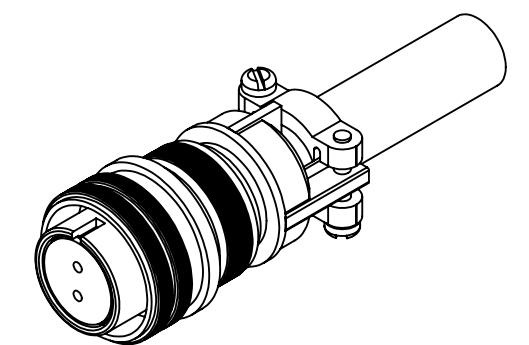
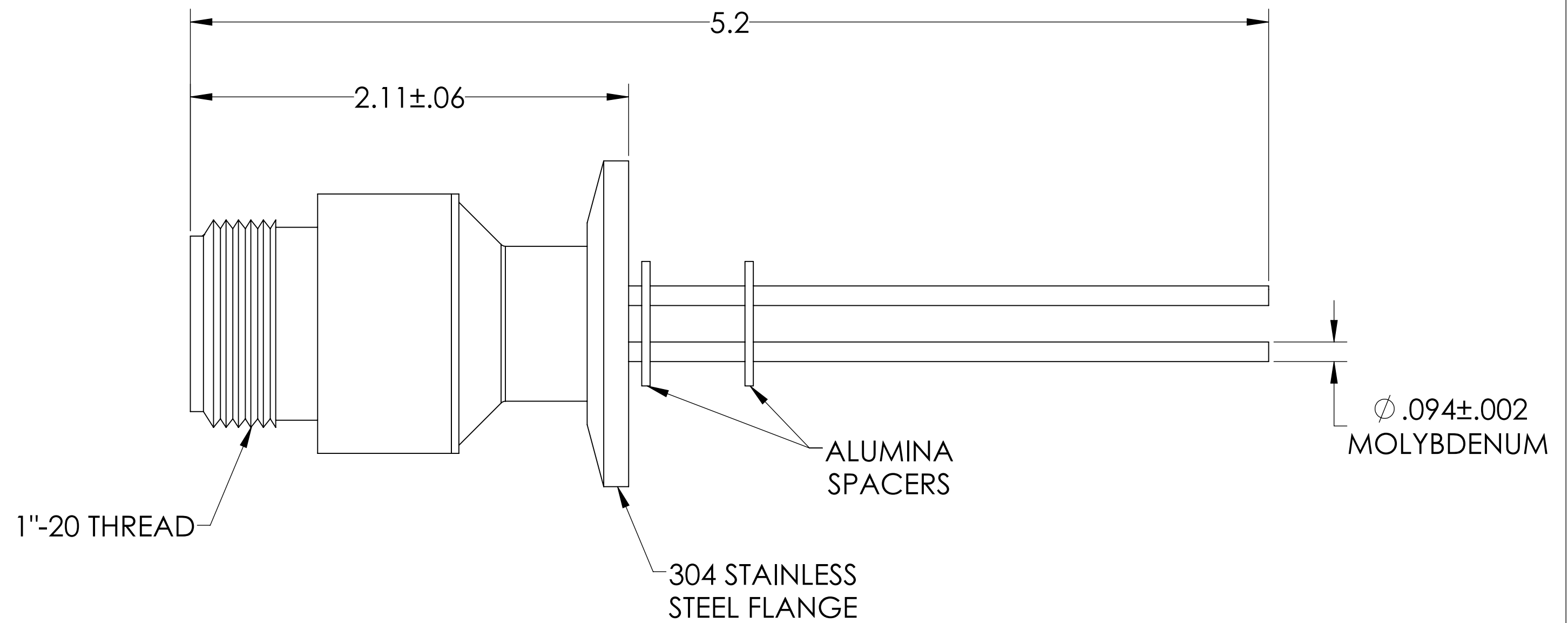
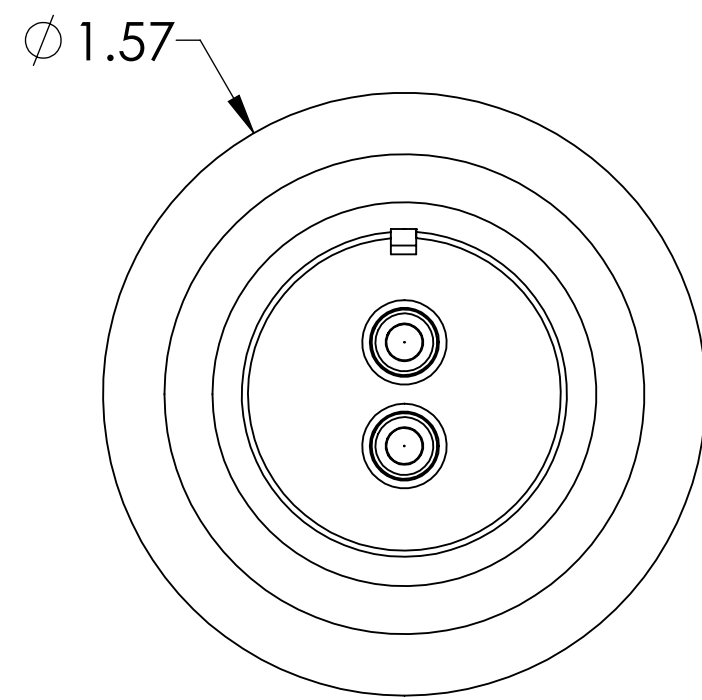
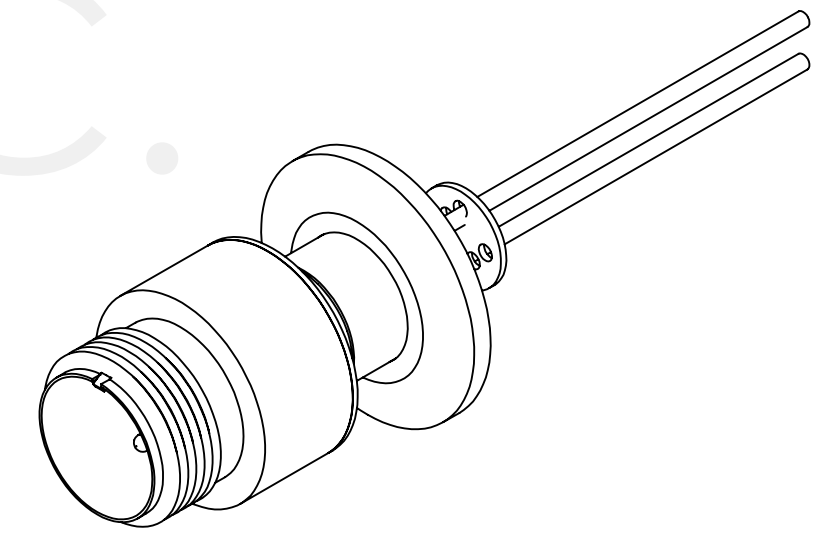


# MPF PRODUCTS INC.



**SPECIFICATIONS:**

1. VOLTAGE: 700 VOLTS DC
2. CURRENT: 28 AMPS PER PIN
3. TEMPERATURE RATING: -100 TO 450°C WITHOUT CONNECTOR
4. LEAK RATE < 1X10-9 ATM CC/SEC HE

MS Series, Multipin Feedthrough w/ Air-side Connector, 2 Pins, 700 Volts, 28 Amps per Pin, 0.094" Moly Conductors, 1.57" QF/KF

UNLESS OTHERWISE SPECIFIED:	QUOTATION #	N/A					
DIMENSIONS ARE IN INCHES TOLERANCES:	DRAWN	NAME	DATE				
ANGULAR: MACH ± 1/2°	WJ	WJ	9/11/2015				
TWO PLACE DECIMAL ± .030	CHECKED		9/11/2015				
THREE PLACE DECIMAL ± .015	ENG APPR.	WJ	9/11/2015				
MATERIAL	THIRD ANGLE:						
FINISH	APPLICATION	<table border="1"> <tr> <th>NEXT ASSY</th> <th>USED ON</th> </tr> <tr> <td> </td> <td> </td> </tr> </table>		NEXT ASSY	USED ON		
NEXT ASSY	USED ON						
PLATING	SURFACE FINISH:	63/ OR BETTER					
	UNLESS OTHERWISE SPECIFIED:	ALL DIAMETERS CONCENTRIC WITHIN .005. REMOVE ALL BURRS AND SHARP EDGES					
	TITLE:	MULTIPIN, 2 PINS, 700V, 28A, 1.57" QF/KF					
	DOWNLOADED FROM MPFPI.COM						
	DWG. NO.	A3991-3-QF	REV				
	Monday, January 28, 2019 3:22:37 PM						