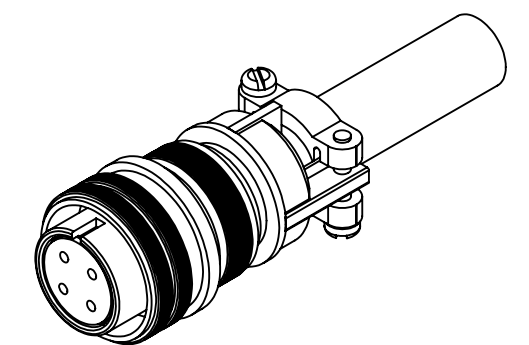
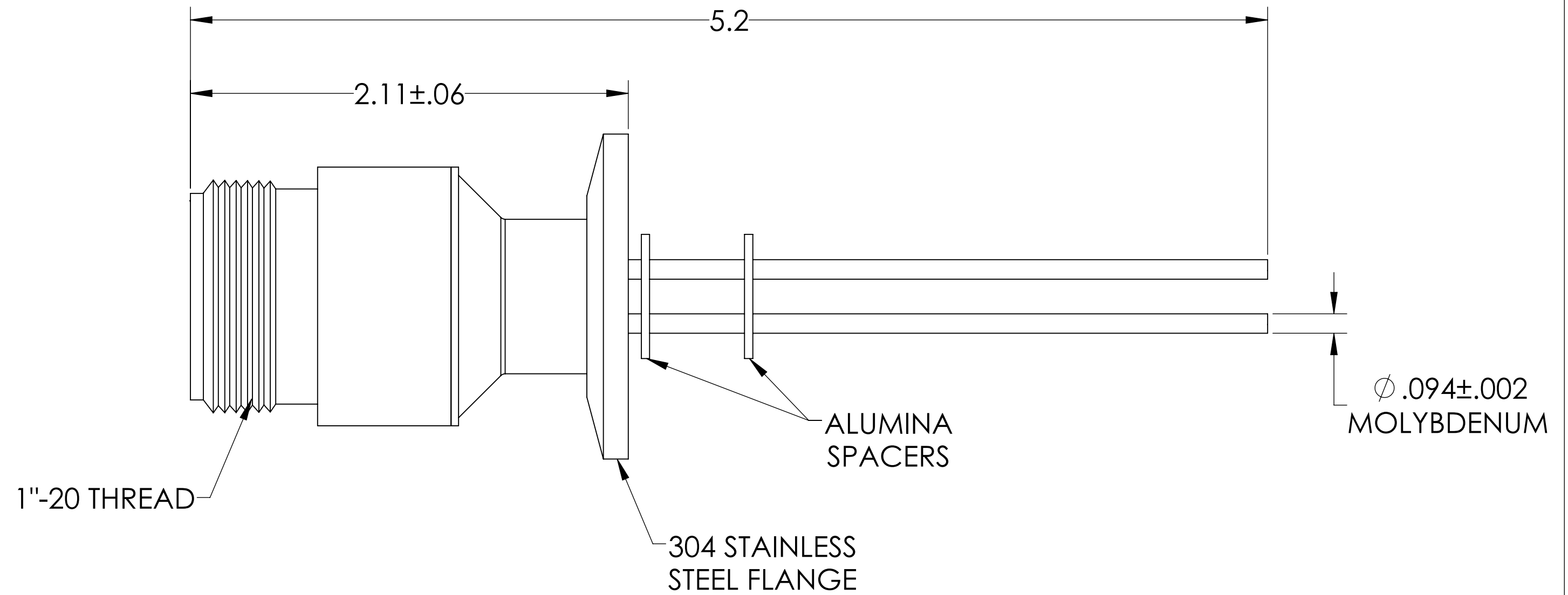
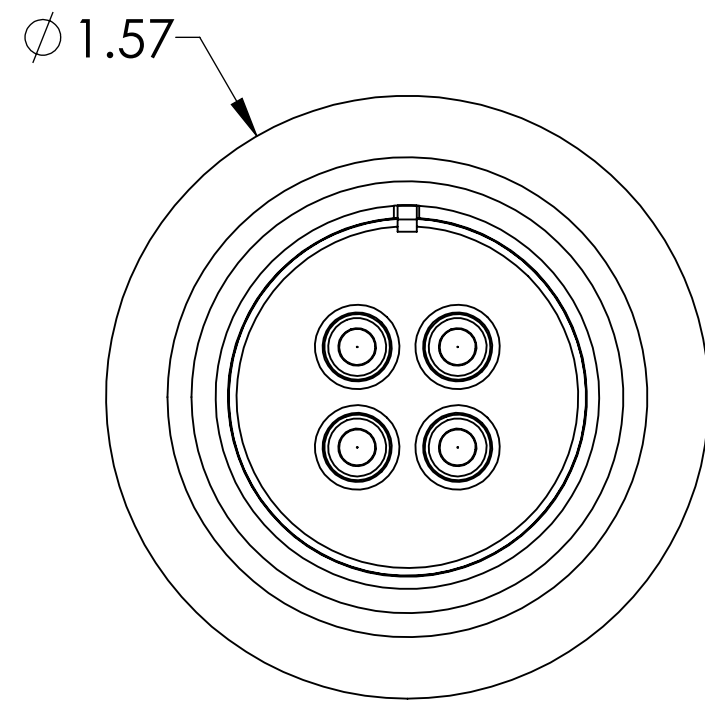
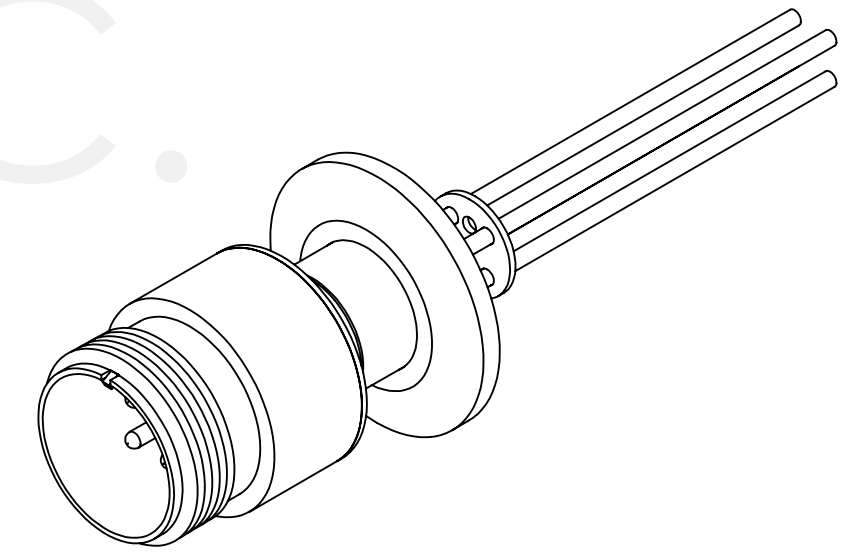


MPF PRODUCTS INC.



SPECIFICATIONS:

1. VOLTAGE: 700 VOLTS DC
2. CURRENT: 28 AMPS PER PIN
3. TEMPERATURE RATING: -100 TO 450°C WITHOUT CONNECTOR
4. LEAK RATE < 1X10-9 ATM CC/SEC HE

MS Series, Multipin Feedthrough w/ Air-side Connector, 4 Pins, 700 Volts, 28 Amps per Pin, 0.094" Moly Conductors, 1.57" QF/KF

UNLESS OTHERWISE SPECIFIED:		QUOTATION #		N/A	
DIMENSIONS ARE IN INCHES TOLERANCES:		NAME	DATE	MPF PRODUCTS INC.	
ANGULAR: MACH ± 1/2°		DRAWN	9/11/2015		
TWO PLACE DECIMAL ± .030		CHECKED	9/11/2015		
THREE PLACE DECIMAL ± .015		ENG APPR.	9/11/2015		
MATERIAL		THIRD ANGLE:		MULTIPIN, 4 PINS, 700V, 28A, 1.57" QF/KF	
FINISH		APPLICATION			
PLATING		NEXT ASSY	USED ON		
		SURFACE FINISH: 63/ OR BETTER			
		UNLESS OTHERWISE SPECIFIED:		DOWNLOADED FROM MPFPI.COM	
		ALL DIAMETERS CONCENTRIC WITHIN .005. REMOVE ALL BURRS AND SHARP EDGES		DWG. NO. A3991-7-QF	
				REV	
				Monday, January 28, 2019 3:30:05 PM	