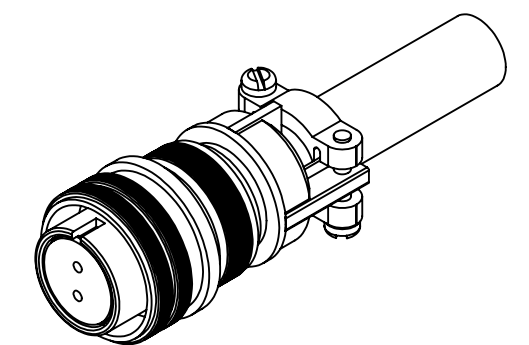
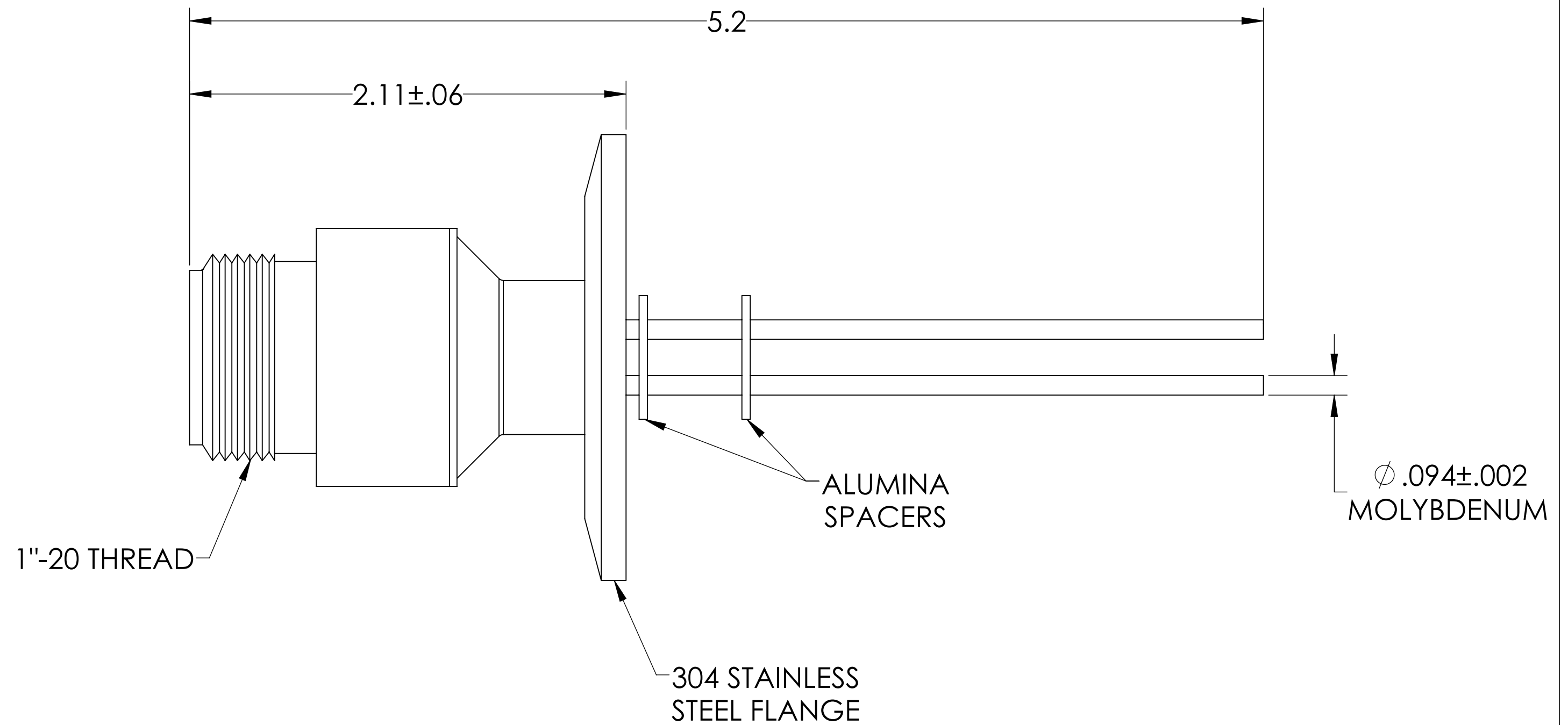
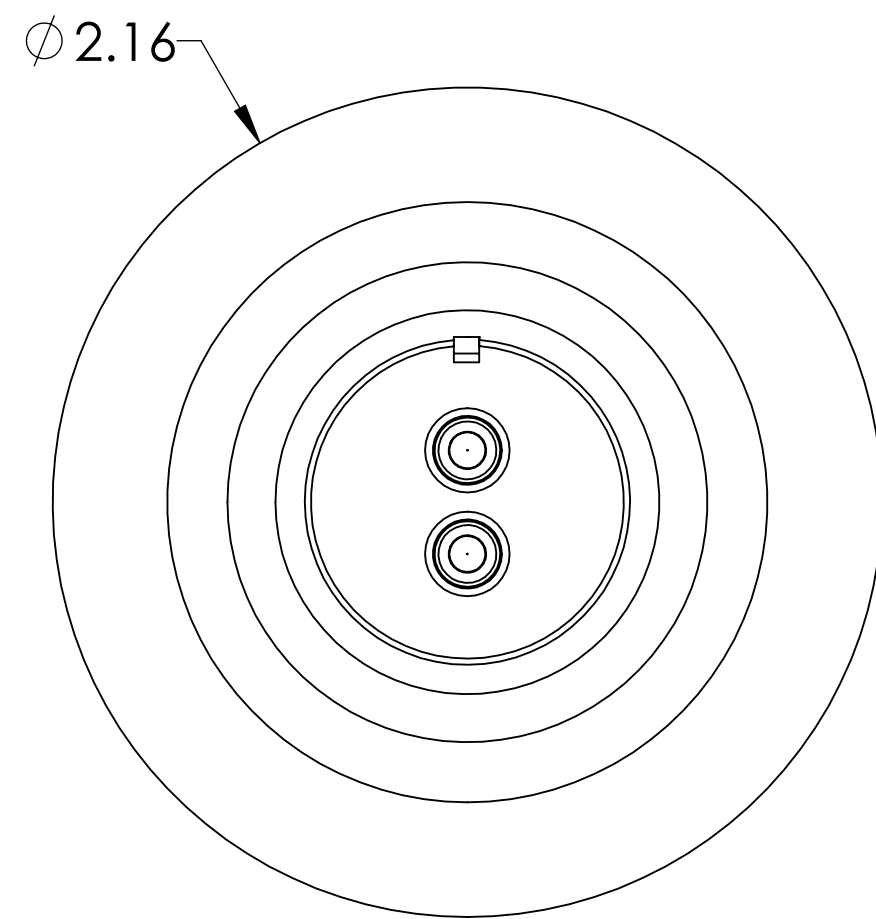
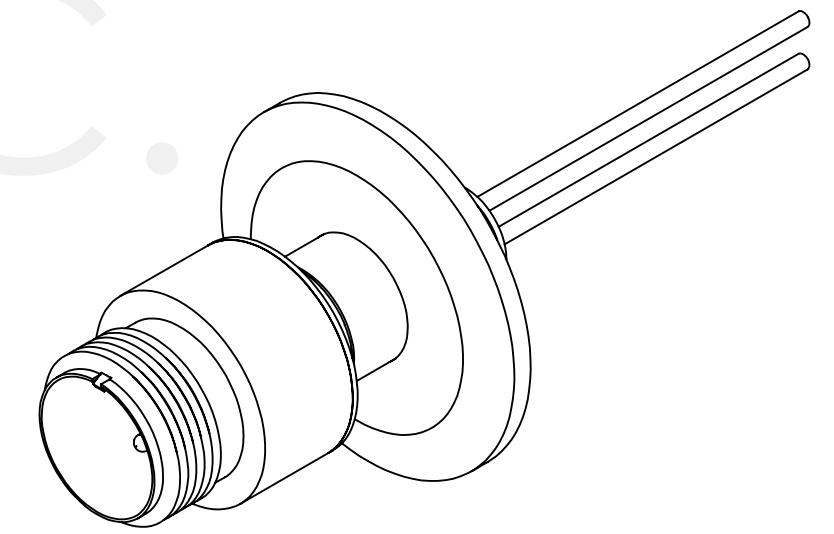


# MPF PRODUCTS INC.



**SPECIFICATIONS:**

1. VOLTAGE: 700 VOLTS DC
2. CURRENT: 28 AMPS PER PIN
3. TEMPERATURE RATING: -100 TO 450°C WITHOUT CONNECTOR
4. LEAK RATE < 1X10-9 ATM CC/SEC HE

MS Series, Multipin Feedthrough w/ Air-side Connector, 2 Pins, 700 Volts, 28 Amps per Pin, 0.094" Moly Conductors, 2.16" QF/KF

UNLESS OTHERWISE SPECIFIED:	QUOTATION #	N/A	
DIMENSIONS ARE IN INCHES TOLERANCES:	DRAWN	NAME	DATE
ANGULAR: MACH ± 1/2°	WJ	WJ	9/11/2015
TWO PLACE DECIMAL ± .030	CHECKED		9/11/2015
THREE PLACE DECIMAL ± .015	ENG APPR.	WJ	9/11/2015
MATERIAL	THIRD ANGLE:		
FINISH	APPLICATION		
PLATING	NEXT ASSY USED ON		
	SURFACE FINISH: 63 OR BETTER		
	UNLESS OTHERWISE SPECIFIED:		
	ALL DIAMETERS CONCENTRIC WITHIN .005. REMOVE ALL BURRS AND SHARP EDGES		
	TITLE:		REV
	MULTIPIN, 2 PINS, 700V, 28A, 2.16" QF/KF		
	DWG. NO.		
	A3992-3-QF		
	DOWNLOADED FROM MPFPI.COM		
	Monday, January 28, 2019 3:44:48 PM		