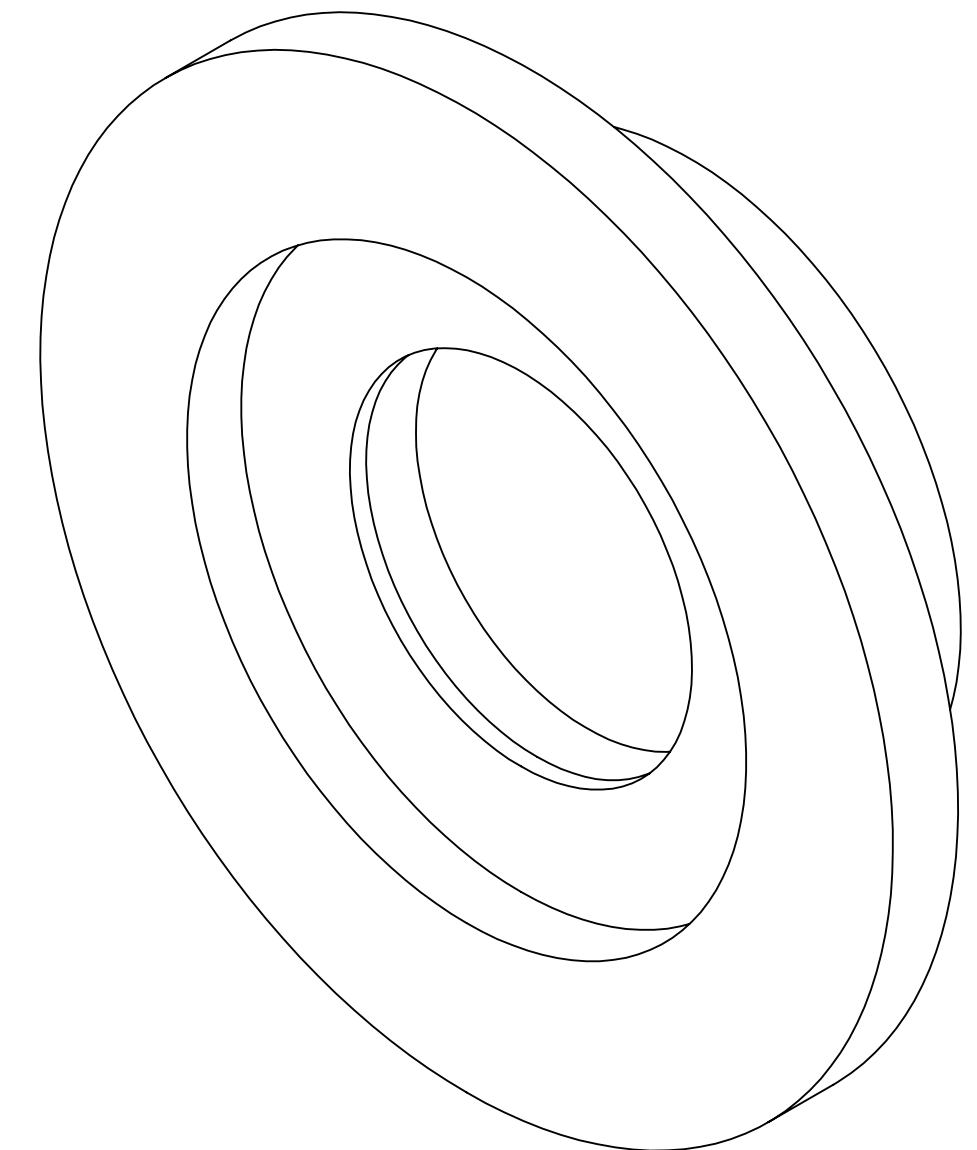
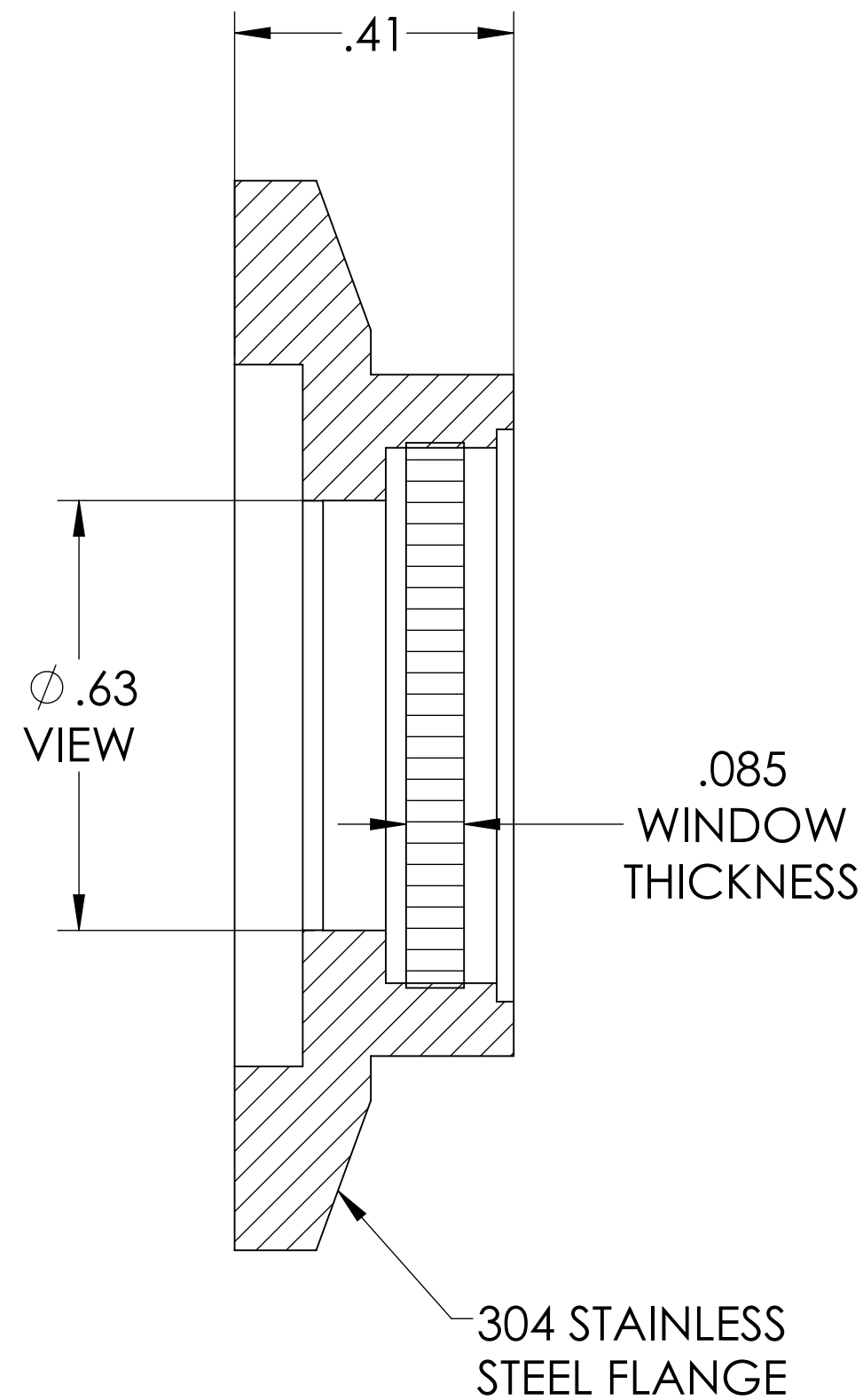
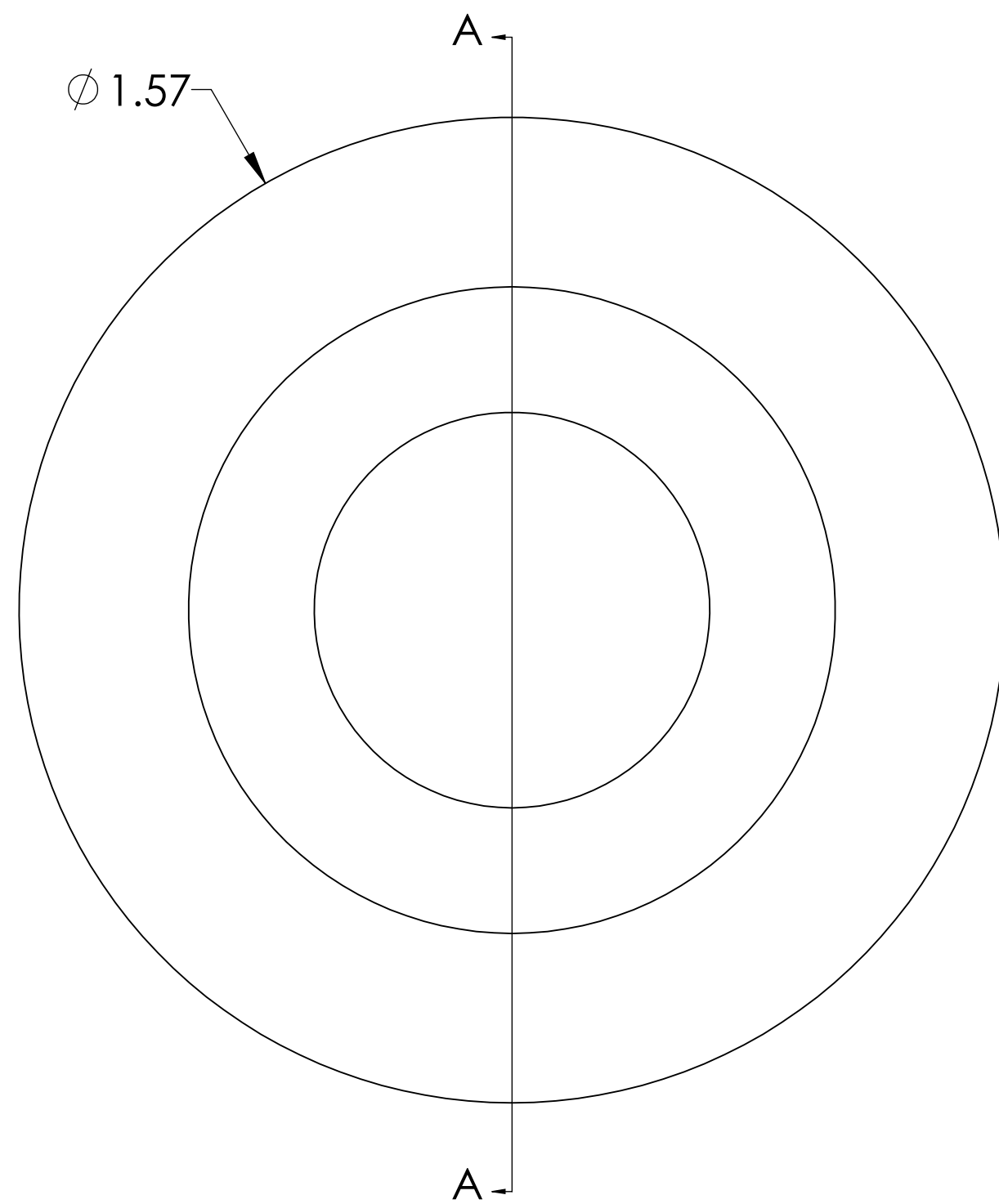


# MPF PRODUCTS INC.



**SPECIFICATIONS:**

1. MATERIAL: CORNING HPFS 7980 FUSED SILICA OR EQUIVALENT
2. TWD <math>< 10\lambda</math> @ 632NM (PEAK TO VALLEY)
3. SURFACE FINISH: 40/20 SCRATCH-DIG
4. PARALLELISM <math>< 30</math> ARC MINUTES
5. THERMAL RANGE: -100 °C TO 200 °C
6. HOMOGENEITY GRADE: F
7. INCLUSION CLASS: 2
8. LEAK RATE <math>< 1 \times 10^{-9}</math> ATM-CC/SEC HE

UV Grade Fused Silica Viewport, 0.63" View Dia, 1.57" QF/KF

UNLESS OTHERWISE SPECIFIED:		QUOTATION #		N/A	
DIMENSIONS ARE IN INCHES		DRAWN	WJ	DATE	9/11/2015
TOLERANCES:		CHECKED	WJ	DATE	9/11/2015
ANGULAR: MACH $\pm 1/2^\circ$		ENG APPR.	WJ	DATE	9/11/2015
TWO PLACE DECIMAL $\pm .030$		THIRD ANGLE:			
THREE PLACE DECIMAL $\pm .015$					
MATERIAL	APPLICATION		VIEWPORT, FUSED SILICA, UV, 0.6 VIEW, QF/KF 25		
	NEXT ASSY USED ON				
FINISH	SURFACE FINISH: $\sqrt{63}$ OR BETTER		DOWNLOADED FROM MPFPI.COM		
PLATING	UNLESS OTHERWISE SPECIFIED:		DWG. NO. A4563-1-QF		
ALL DIAMETERS CONCENTRIC WITHIN .005. REMOVE ALL BURRS AND SHARP EDGES		THURSDAY, JANUARY 24, 2019 11:24:37 AM		REV	