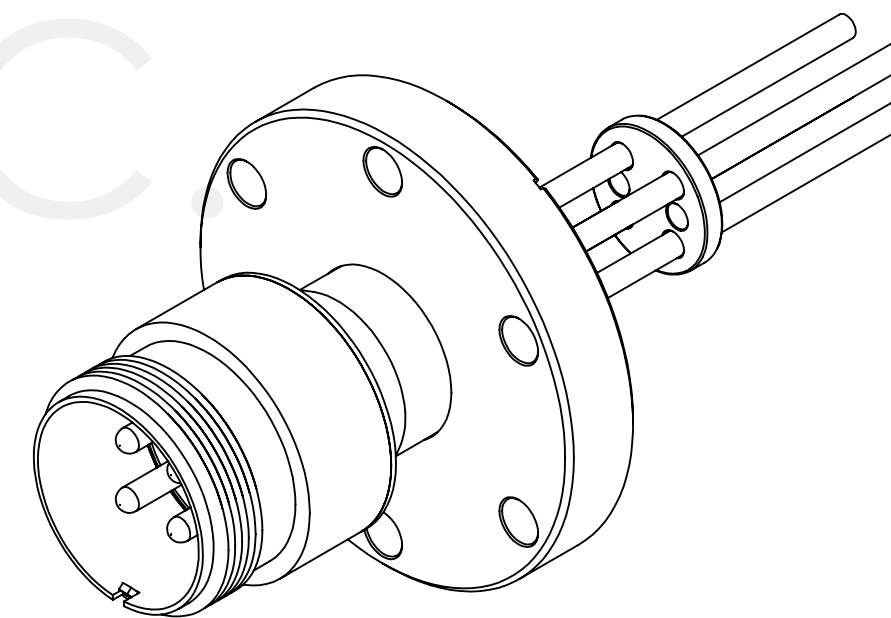
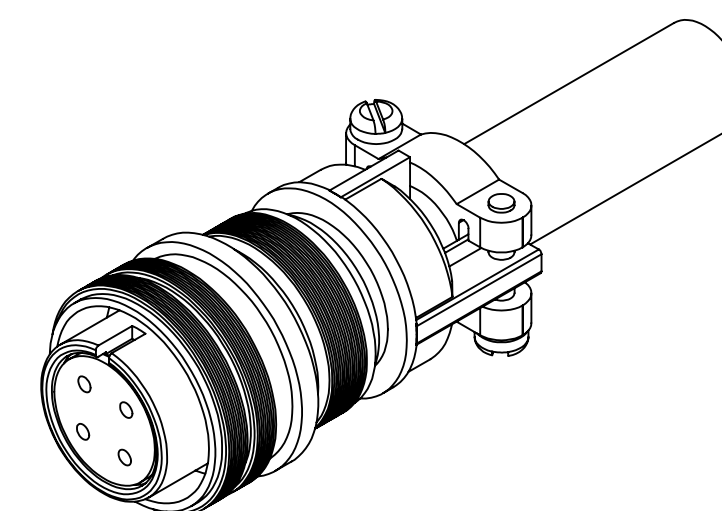
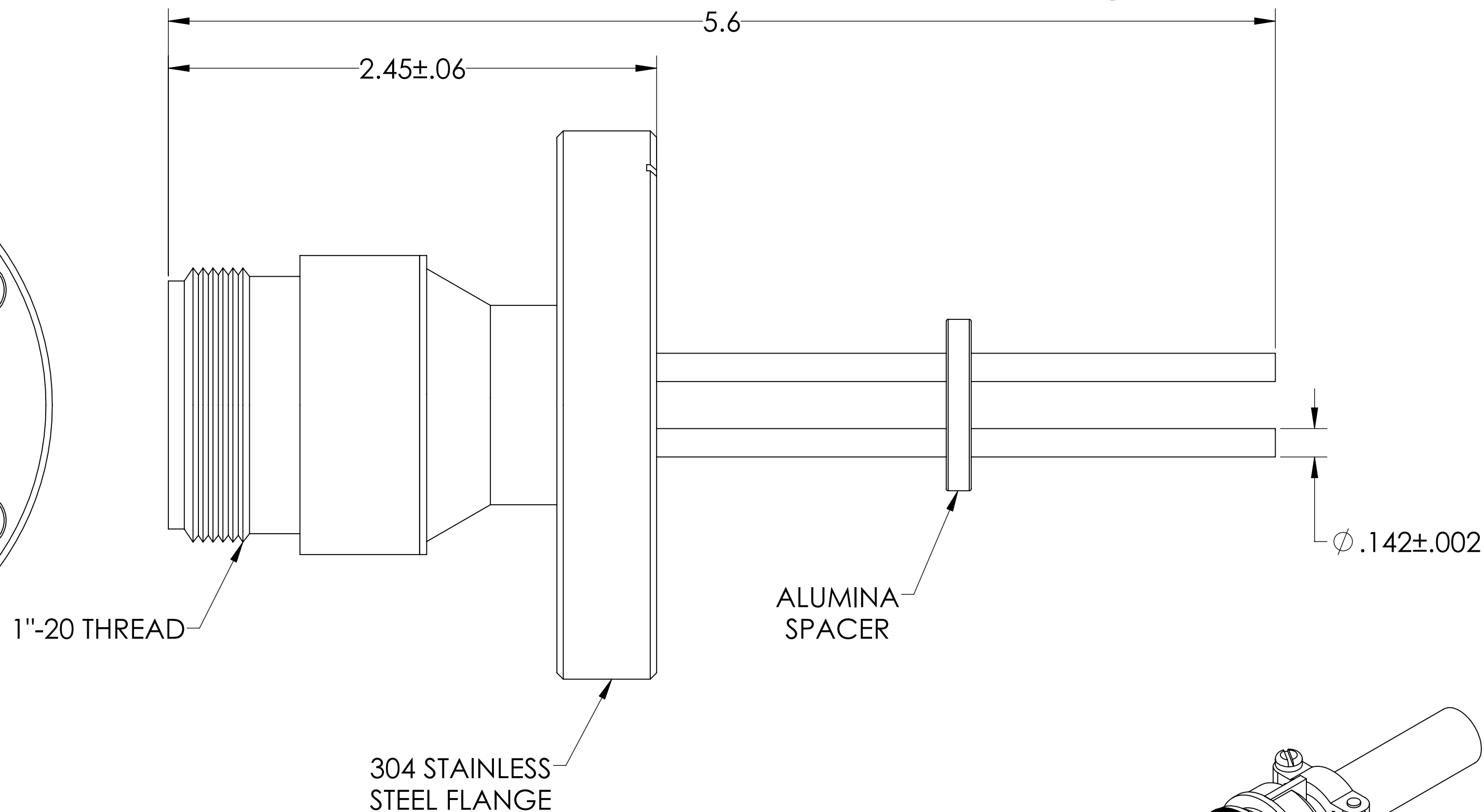
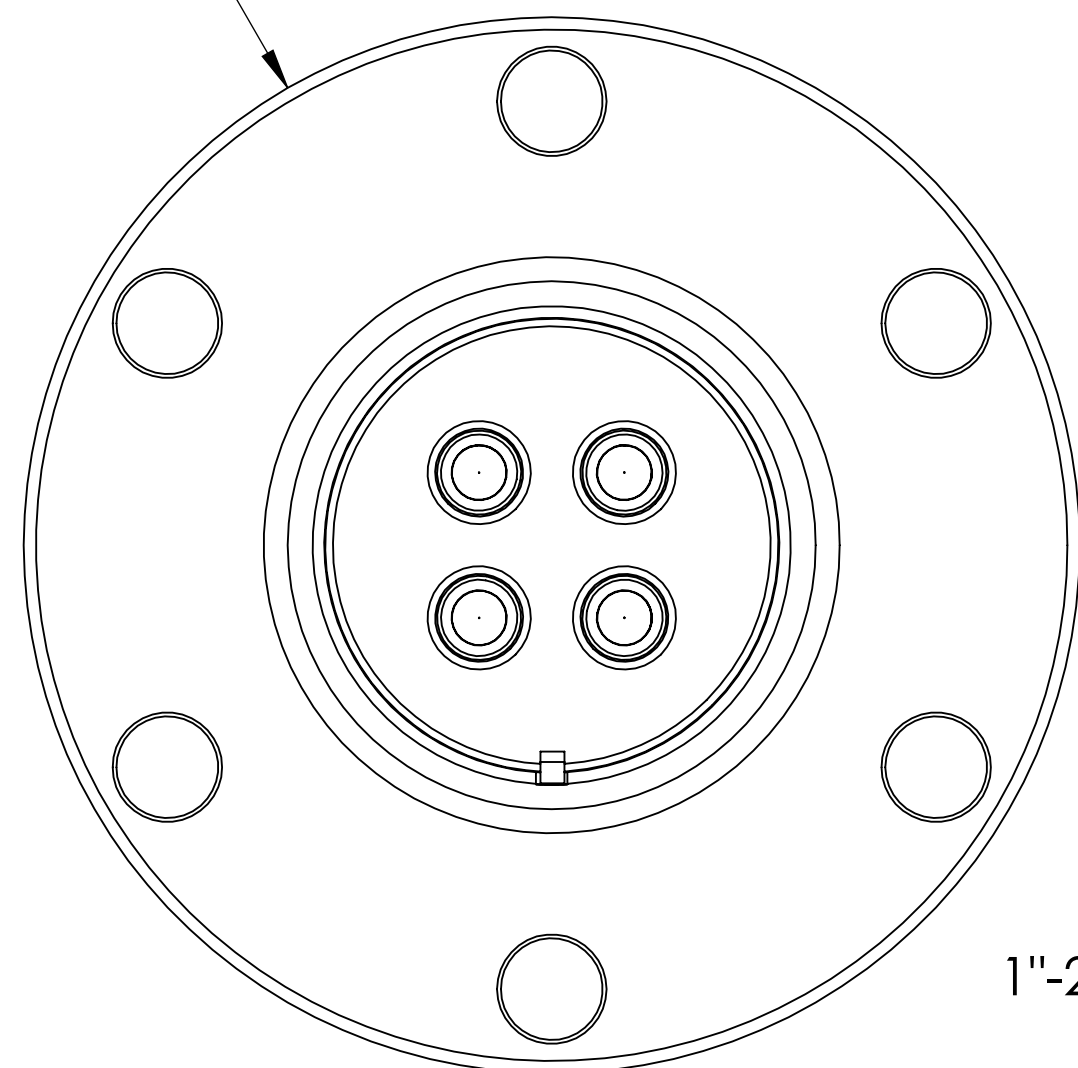


MPF PRODUCTS INC.



Ø 2.75 CF



PART #	CONDUCTOR MATERIAL	CURRENT RATING PER PIN
A4852-1-CF	MOLYBDENUM	40 AMPS
A4852-3-CF	NICKEL 200	25 AMPS

SPECIFICATIONS:

1. VOLTAGE: 700 VOLTS DC
2. CURRENT: SEE TABLE
3. TEMPERATURE RATING: -100 TO 450°C WITHOUT CONNECTOR
4. LEAK RATE < 1X10-9 ATM CC/SEC HE

MS Series, Multipin Feedthrough w/ Air-side Connector, 4 Pins, 700 Volts, 0.142" Conductors, 2.75" Conflat Flange

UNLESS OTHERWISE SPECIFIED:		QUOTATION #		N/A		
DIMENSIONS ARE IN INCHES		NAME	DATE	MPF PRODUCTS INC.		
TOLERANCES:		DRAWN	WJ			9/11/2015
ANGULAR: MACH ± 1/2°		CHECKED	WJ			9/11/2015
TWO PLACE DECIMAL ± .030		ENG APPR.	WJ			9/11/2015
THREE PLACE DECIMAL ± .015		THIRD ANGLE:		MULTIPIN, 4 PINS, 700V, 275CF		
MATERIAL		APPLICATION				
FINISH		NEXT ASSY	USED ON			
PLATING		SURFACE FINISH: 63/ OR BETTER		DOWNLOADED FROM MPFPI.COM		
UNLESS OTHERWISE SPECIFIED:		ALL DIAMETERS CONCENTRIC WITHIN .005.		DWG. NO. A4852		
REMOVE ALL BURRS AND SHARP EDGES		Tuesdays, January 29, 2019 8:30:38 AM		REV		