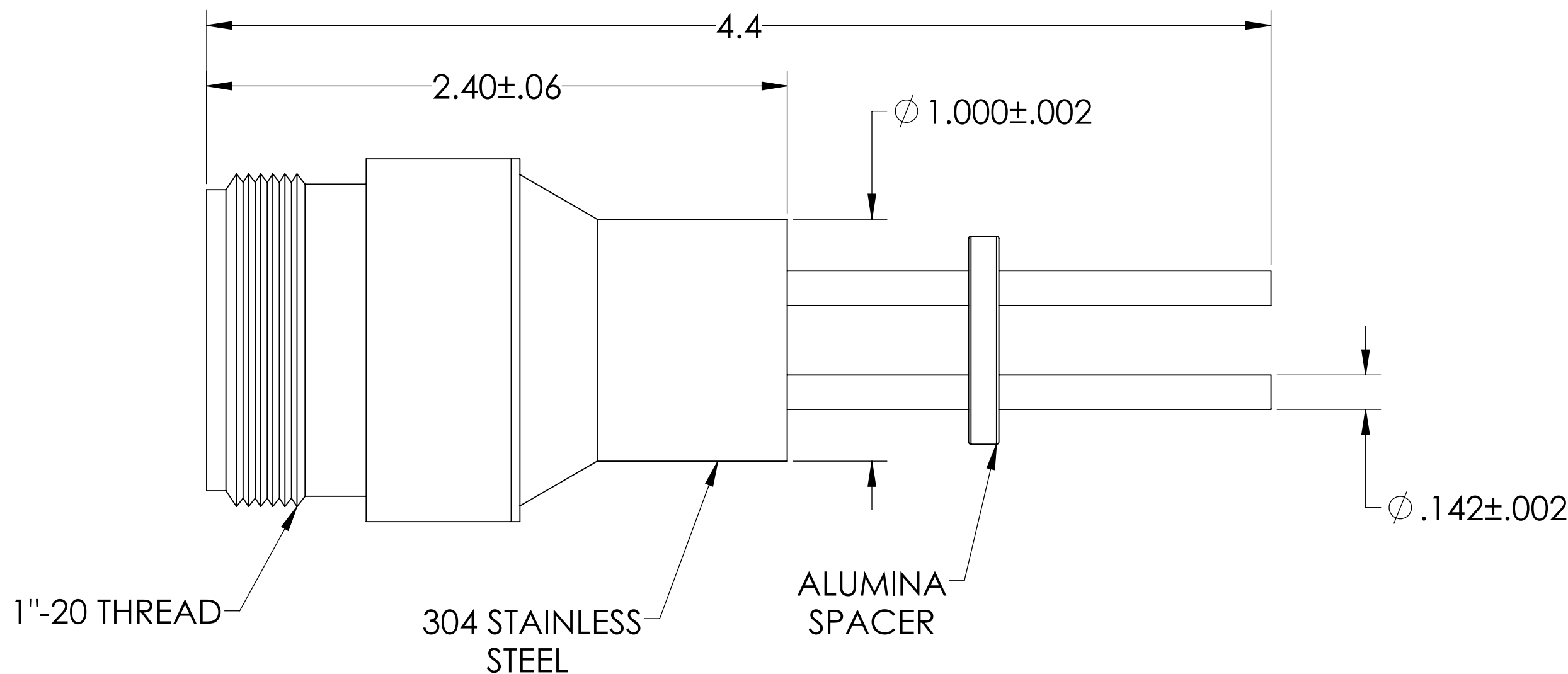
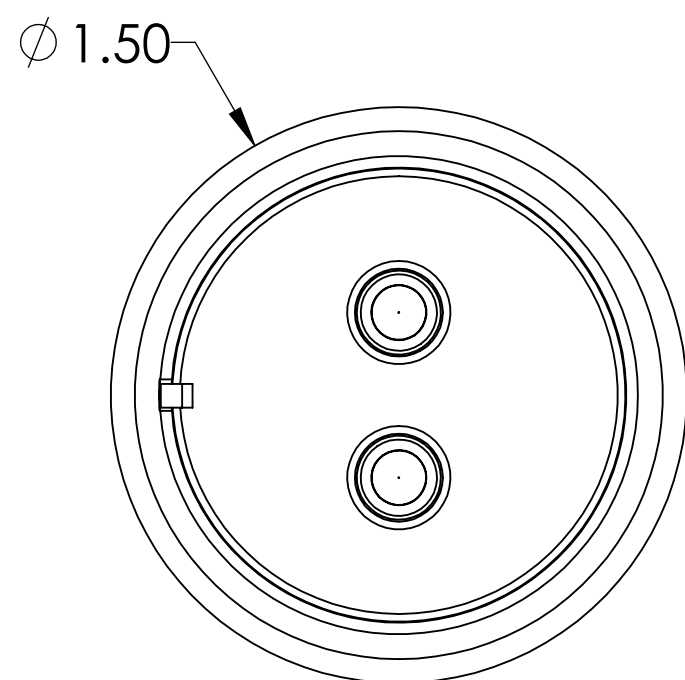
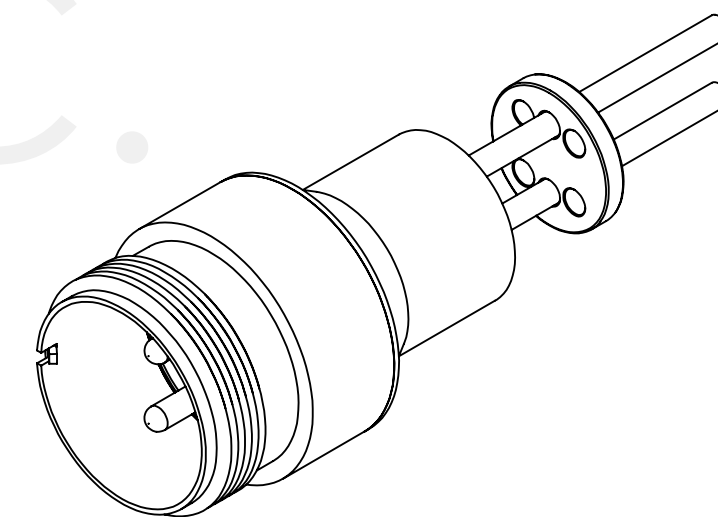
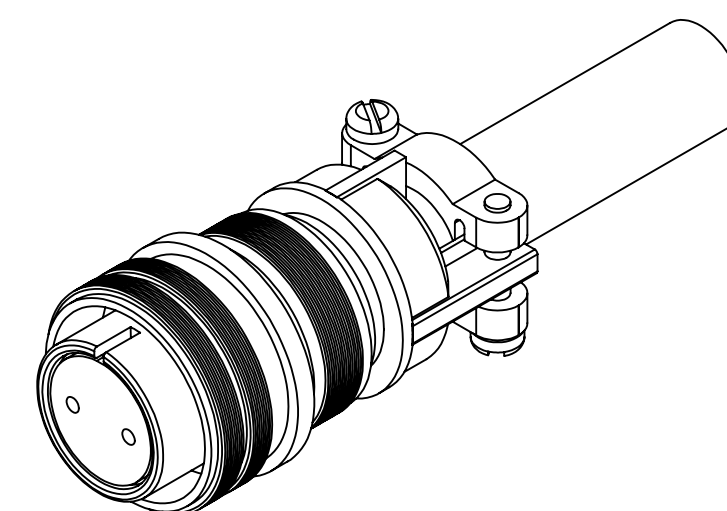


# MPF PRODUCTS INC.



PART #	CONDUCTOR MATERIAL	CURRENT RATING PER PIN
A5076-1-W	MOLYBDENUM	40 AMPS
A5076-3-W	NICKEL 200	25 AMPS



**SPECIFICATIONS:**

- VOLTAGE: 700 VOLTS DC
- CURRENT: SEE TABLE
- TEMPERATURE RATING: -100 TO 450°C WITHOUT CONNECTOR
- LEAK RATE < 1X10-9 ATM CC/SEC HE

MS Series, Multipin Feedthrough w/ Air-side Connector, 2 Pins, 700 Volts, 0.142" Conductors, 1.00" Weld Adapter

UNLESS OTHERWISE SPECIFIED:		QUOTATION #		N/A	
DIMENSIONS ARE IN INCHES TOLERANCES:		NAME	DATE	MPF PRODUCTS INC.	
ANGULAR: MACH ± 1/2°		DRAWN	9/11/2015		
TWO PLACE DECIMAL ± .030		CHECKED	9/11/2015		
THREE PLACE DECIMAL ± .015		ENG APPR.	9/11/2015		
MATERIAL		THIRD ANGLE:		MULTIPIN, 2 PINS, 700V, 1.00" WELD ADAPTER	
FINISH		APPLICATION			
PLATING		NEXT ASSY USED ON			
SURFACE FINISH: 63/ OR BETTER		SURFACE FINISH: 63/ OR BETTER		DOWNLOADED FROM MPFPI.COM	
UNLESS OTHERWISE SPECIFIED:		UNLESS OTHERWISE SPECIFIED:		DWG. NO. A5076	
ALL DIAMETERS CONCENTRIC WITHIN .005. REMOVE ALL BURRS AND SHARP EDGES		ALL DIAMETERS CONCENTRIC WITHIN .005. REMOVE ALL BURRS AND SHARP EDGES		REV	
				Tuesday, January 29, 2019 8:49:54 AM	