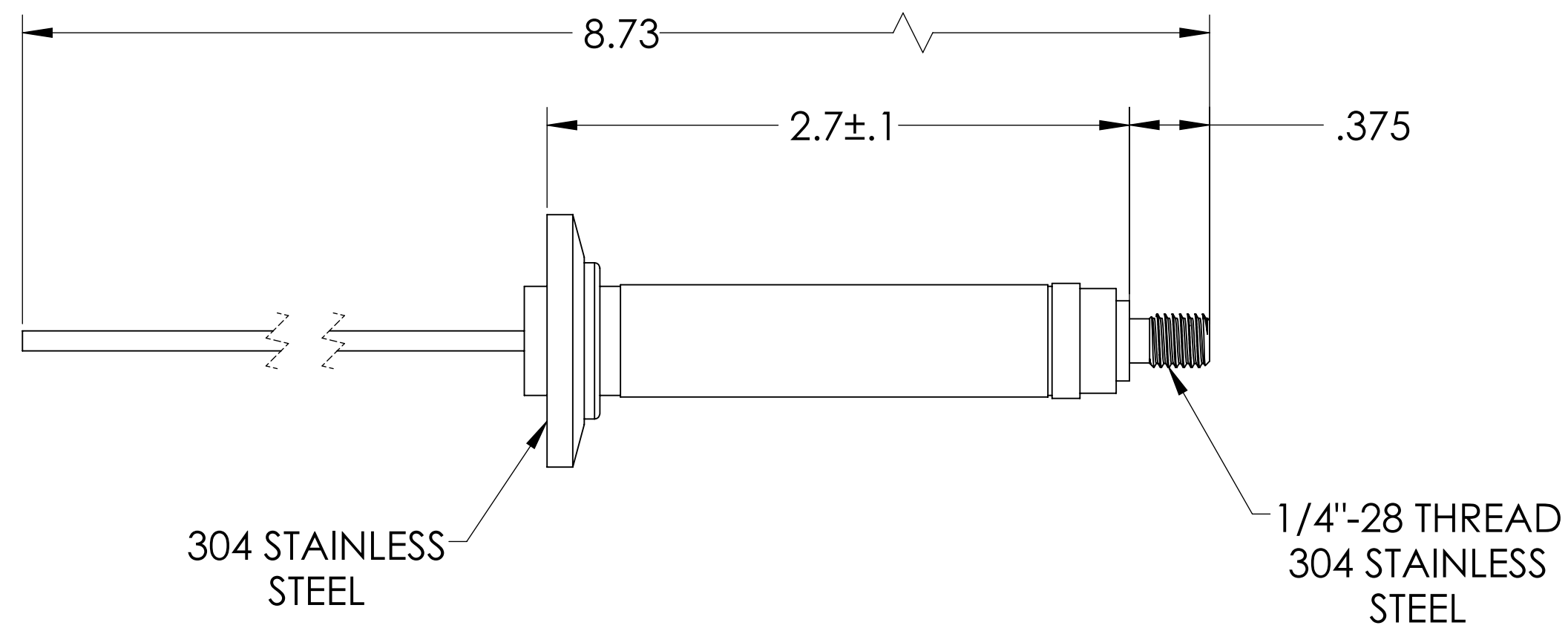
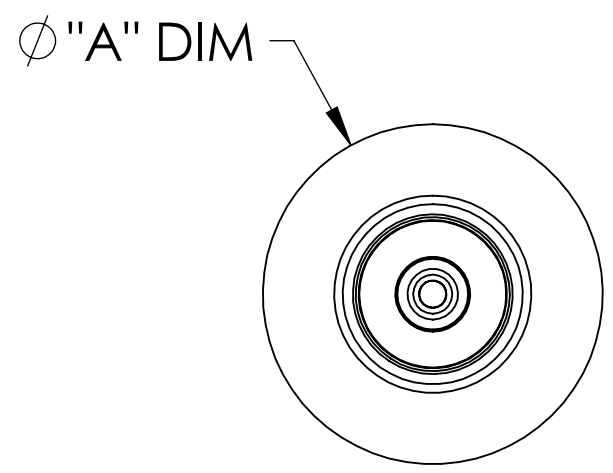
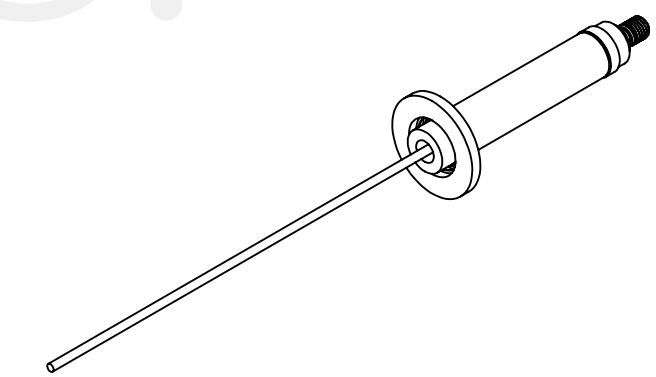


MPF PRODUCTS INC.



PART #	ϕ "A" DIM
A5743-1-QF	1.18
A5743-2-QF	1.57
A5743-3-QF	2.16
A5743-4-QF	2.95

- NOTE:
- VOLTAGE: 20,000 VOLTS DC
 - CURRENT: 50 AMPS
 - TEMPERATURE RATING: -100 TO 450°C

Power Feedthrough, 20 KV, 1 Pin, 0.094" Copper Conductor, QF/KF, UHV Rated, Bakeable to 450°C

UNLESS OTHERWISE SPECIFIED:	QUOTATION #	N/A
DIMENSIONS ARE IN INCHES TOLERANCES:	NAME	DATE
ANGULAR: MACH ± 1/2°	WJ	9/11/2015
TWO PLACE DECIMAL ± .030	CHECKED	9/11/2015
THREE PLACE DECIMAL ± .015	ENG APPR.	WJ 9/11/2015
MATERIAL	THIRD ANGLE:	
FINISH	APPLICATION	
PLATING	NEXT ASSY USED ON	
	SURFACE FINISH:	63/ OR BETTER
	UNLESS OTHERWISE SPECIFIED:	
	ALL DIAMETERS CONCENTRIC WITHIN .005. REMOVE ALL BURRS AND SHARP EDGES	
TITLE:		MPF PRODUCTS INC.
TITLE:		POWER FEEDTHROUGH, 25 KV, 3 PINS, 1.500" WELD ADAPTER
DOWNLOADED FROM MPFPI.COM		
DWG. NO.	A5743	REV
Thursday, March 11, 2021 8:09:38 AM		