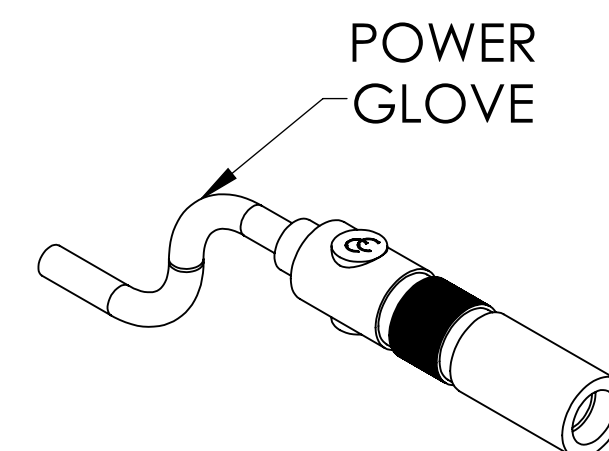
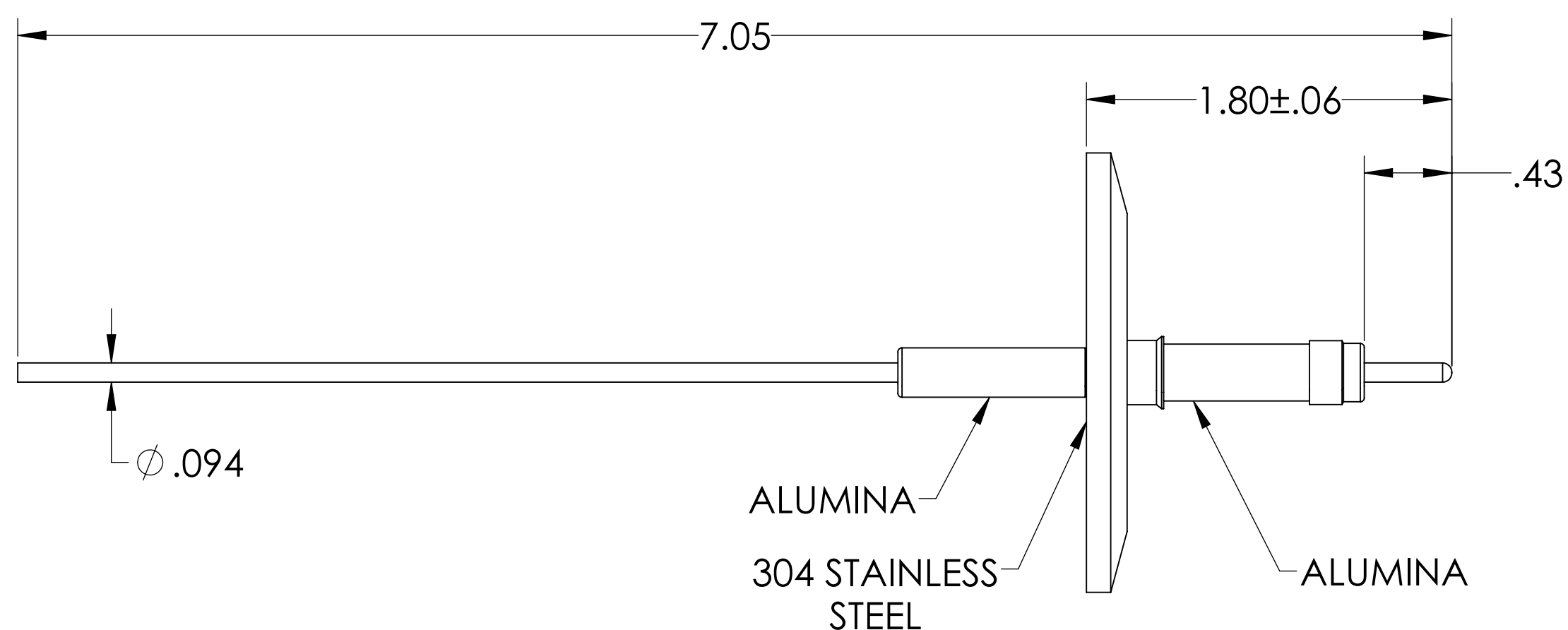
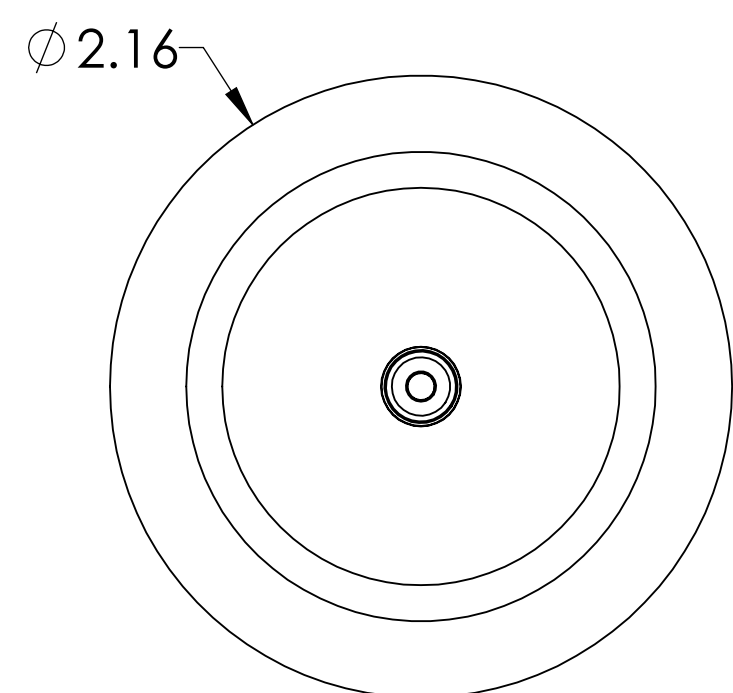
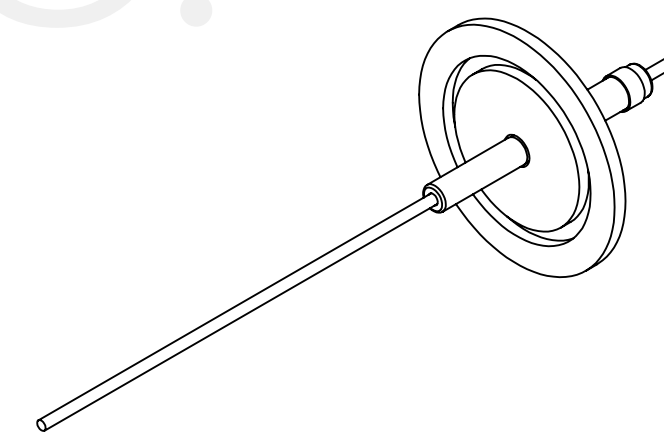


# MPF PRODUCTS INC.



**NOTE:**

1. VOLTAGE: 10,000 VOLTS DC
2. CURRENT: 30 AMPS
3. TEMPERATURE RATING: -100 TO 450°C

Power Feedthrough W/ Power Glove, 10 KV, 1 Pin, 0.094" Copper Conductors, 2.16" QF/KF, UHV Rated, Bakeable to 450°C

UNLESS OTHERWISE SPECIFIED:	QUOTATION #		N/A
DIMENSIONS ARE IN INCHES TOLERANCES:	NAME	DATE	<b>MPF PRODUCTS INC.</b>
ANGULAR: MACH ± 1/2°	DRAWN	9/11/2015	
TWO PLACE DECIMAL ± .030	CHECKED	9/11/2015	
THREE PLACE DECIMAL ± .015	ENG APPR.	WJ 9/11/2015	
MATERIAL	THIRD ANGLE:		TITLE: <b>POWER GLOVE, 10 KV, 1 PIN, 2.16" QF/KF</b>
FINISH	APPLICATION	NEXT ASSY	USED ON
PLATING	SURFACE FINISH: 63 OR BETTER		UNLESS OTHERWISE SPECIFIED:
	ALL DIAMETERS CONCENTRIC WITHIN .005. REMOVE ALL BURRS AND SHARP EDGES		DOWNLOADED FROM MPFPI.COM DWG. NO. <b>A5976-1-QF</b> REV
	Tuesday, January 22, 2019 11:57:25 AM		