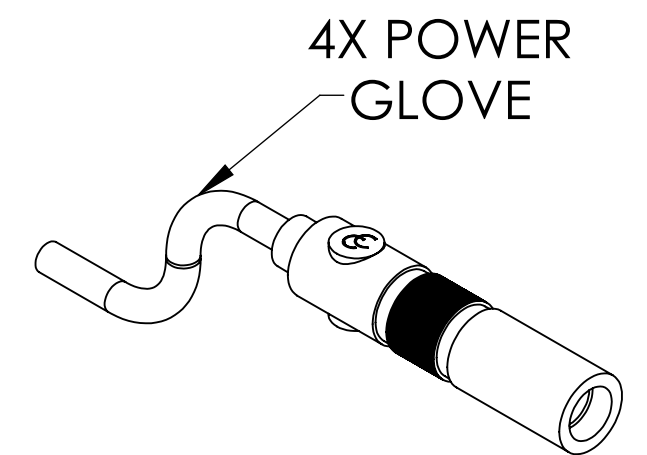
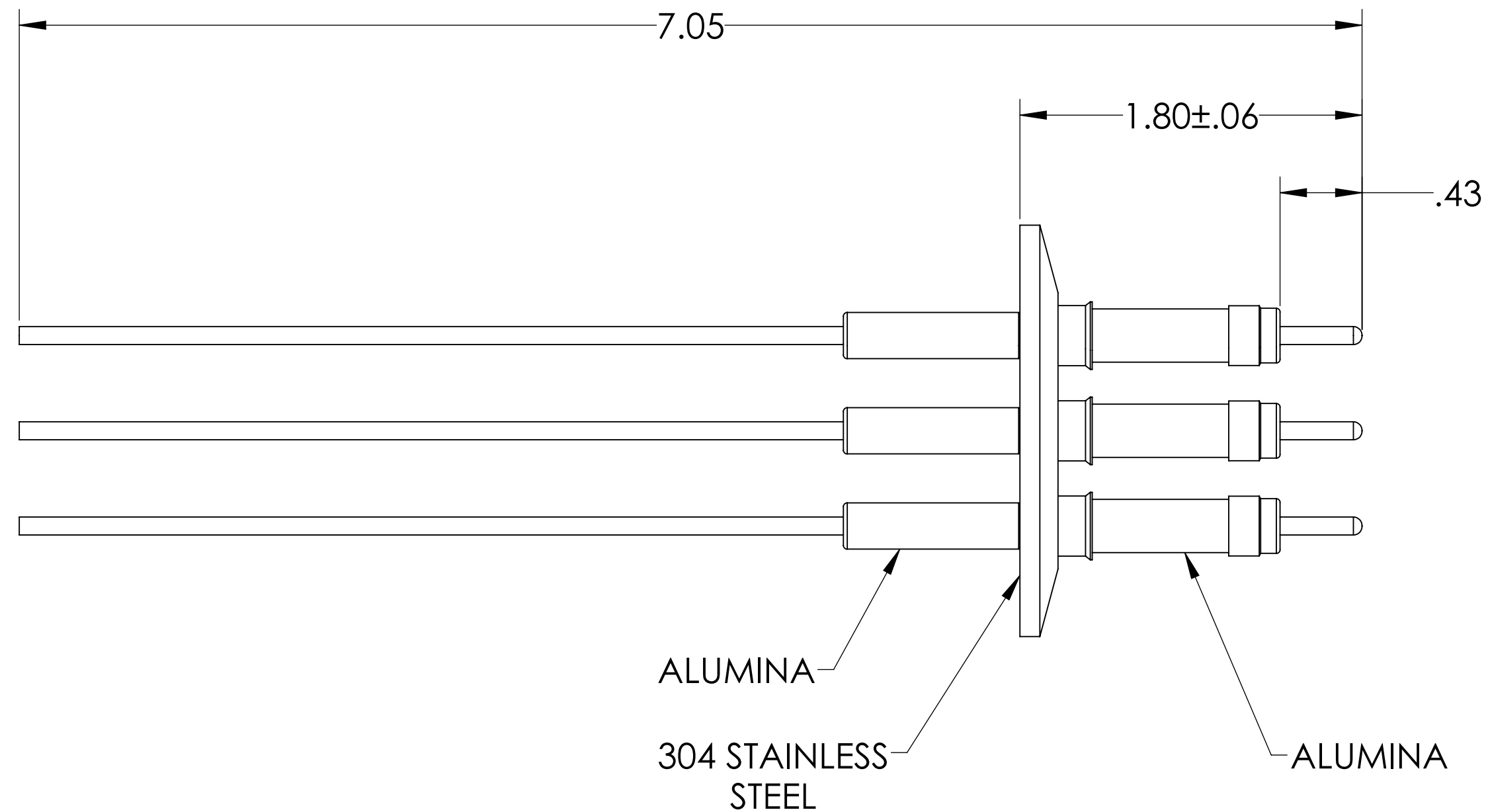
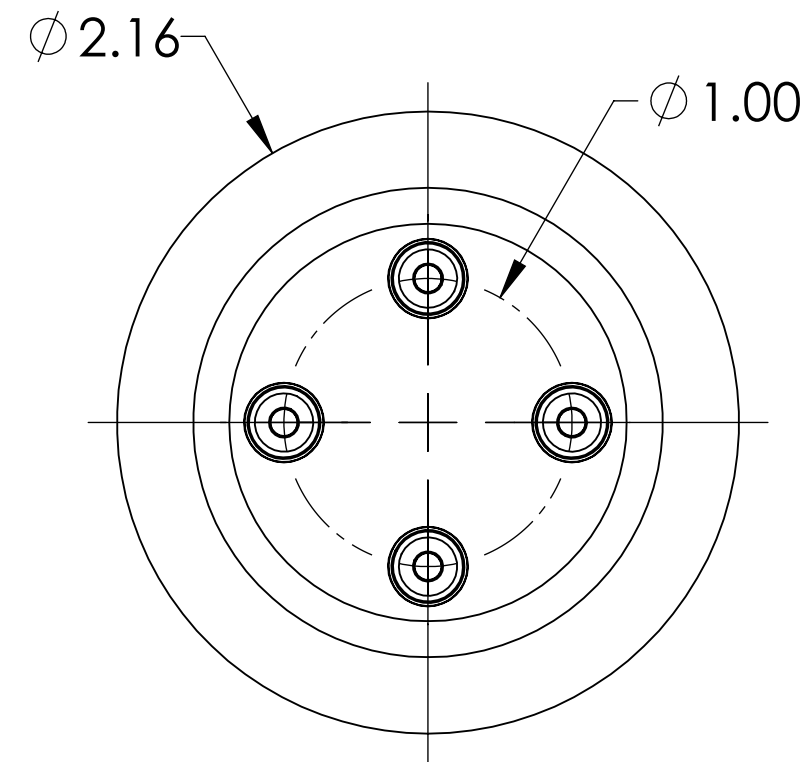
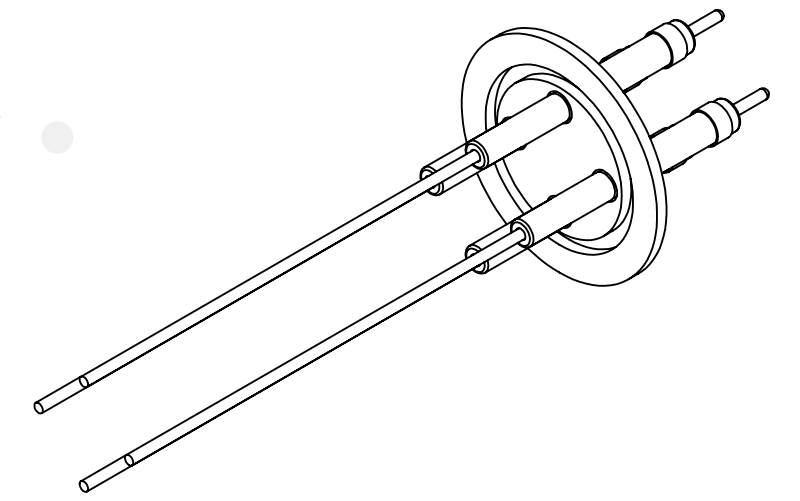


MPF PRODUCTS INC.



NOTE:

1. VOLTAGE: 10,000 VOLTS DC
2. CURRENT: 30 AMPS
3. TEMPERATURE RATING: -100 TO 450°C

Power Feedthrough W/ Power Gloves, 10 KV, 4 Pins, 0.094" Copper Conductors, 2.16" QF/KF, UHV Rated, Bakeable to 450°C

UNLESS OTHERWISE SPECIFIED:		QUOTATION #		N/A	
DIMENSIONS ARE IN INCHES TOLERANCES:		NAME	DATE	MPF PRODUCTS INC.	
ANGULAR: MACH ± 1/2°		DRAWN	9/11/2015		
TWO PLACE DECIMAL ± .030		CHECKED	9/11/2015		
THREE PLACE DECIMAL ± .015		ENG APPR.	9/11/2015		
MATERIAL		THIRD ANGLE:		POWER GLOVES, 10 KV, 4 PINS, 2.16" QF/KF	
		APPLICATION			
		NEXT ASSY	USED ON		
FINISH		SURFACE FINISH: 63/ OR BETTER		DOWNLOADED FROM MPFPI.COM	
PLATING		UNLESS OTHERWISE SPECIFIED:		DWG. NO. A5978-1-QF	
		ALL DIAMETERS CONCENTRIC WITHIN .005. REMOVE ALL BURRS AND SHARP EDGES		REV	
				Tuesday, January 22, 2019 11:59:31 AM	